

# Quick Installation Guide

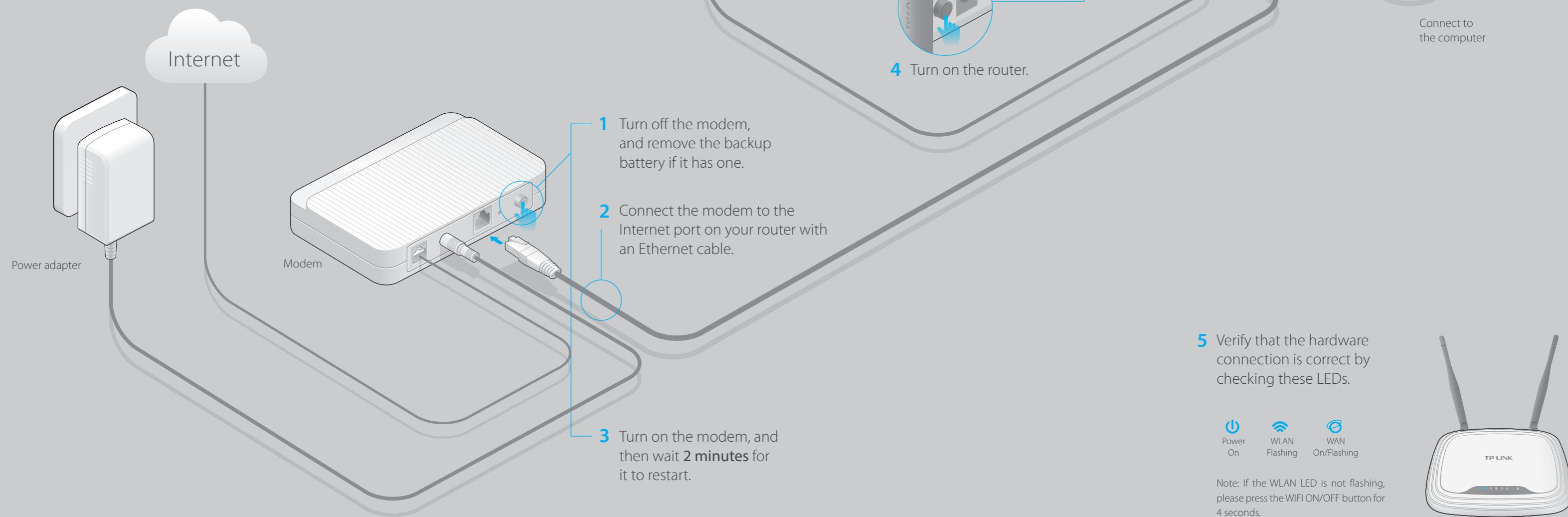
300Mbps Wireless N Router

TL-WR841N / TL-WR841ND

7106505289 REV6.0.1

## Connecting the Hardware

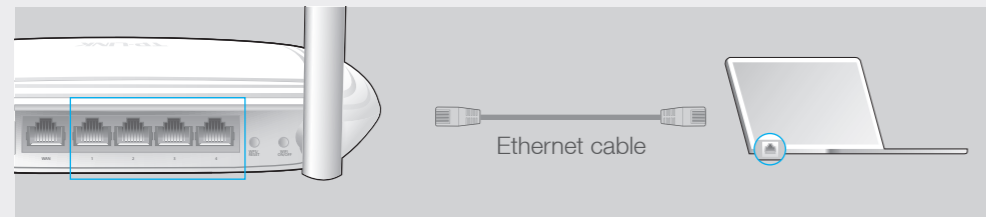
If your Internet connection is through an Ethernet cable from the wall instead of through a DSL / Cable / Satellite modem, connect the Ethernet cable directly to the router's WAN port.



# Configuring the router

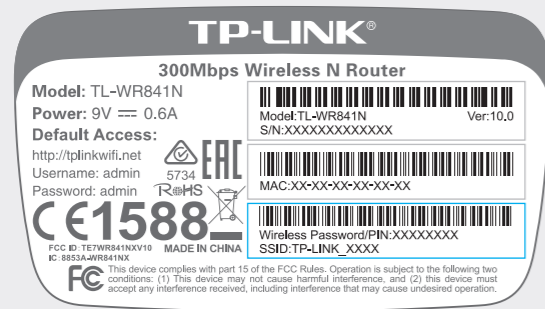
## 1. Connecting your computer to the router (Wired or Wireless)

### Wired



### Wireless

Use the default network name (SSID) and password printed on the product label on the rear panel of the router to connect wirelessly.

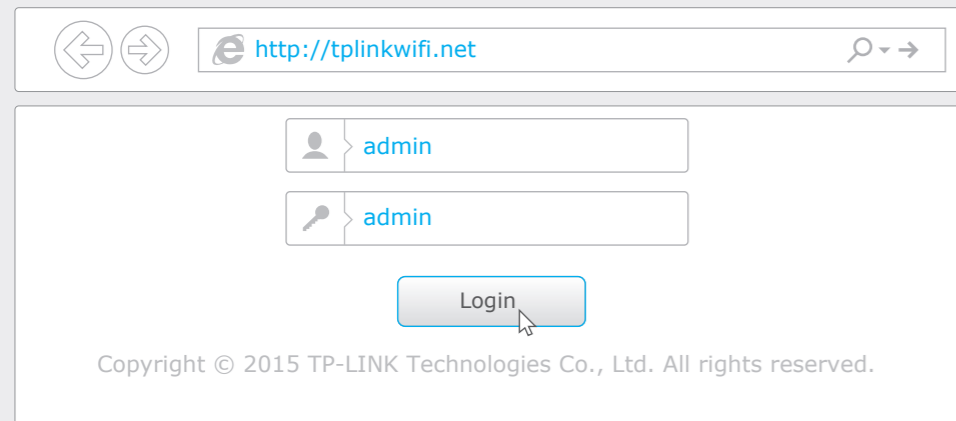


## 2. Configuring the router with a web browser or CD setup wizard

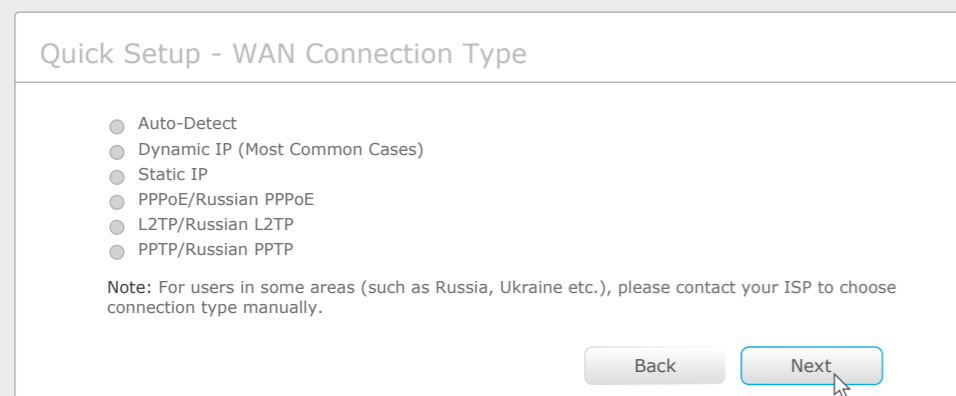
### Option 1: via a web browser

A Enter 'http://tplinkwifi.net' or 'http://192.168.0.1' in the address bar of a web browser. Use 'admin' for both user name and password, and then click on 'Login'.

Note: If the login window does not appear, please refer to FAQ->Q1.

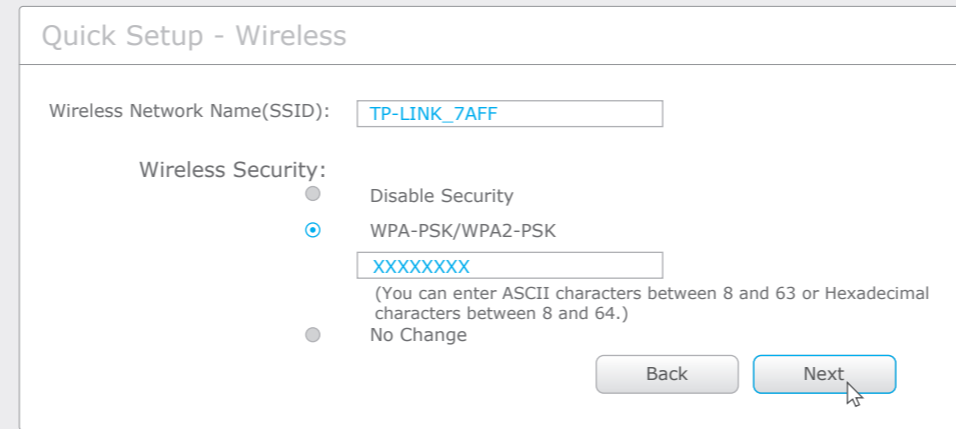


B Click 'Quick Setup' on the left menu, and click 'Next'. Select your Connection Type and if you are unsure what your connection type is, select 'Auto-Detect'. Click 'Next' and follow the instruction to continue.

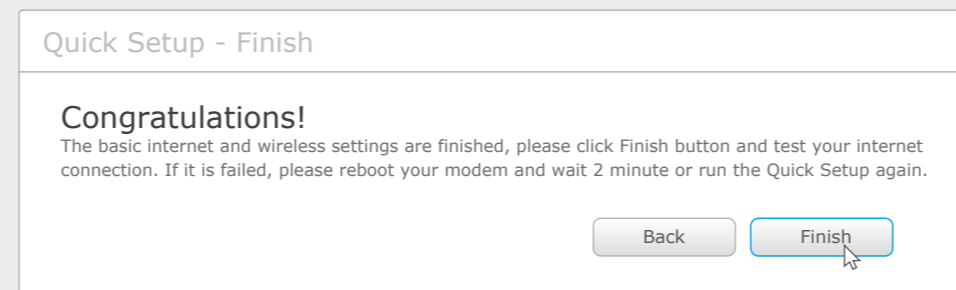


C Verify or Change the Wireless Network Settings. Click 'Next' to continue.

Note: You may rename your wireless network name and create your own password. If you do, please note down the new wireless network name and password.



D Finish the configuration.

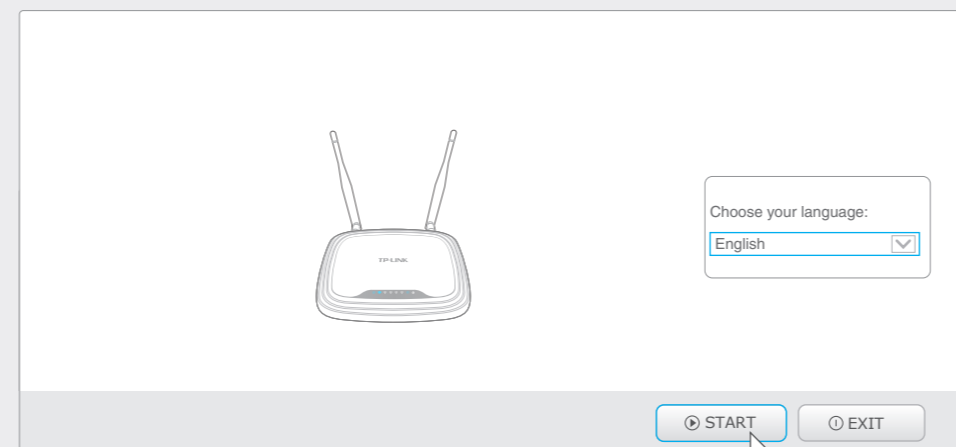


### Option 2: via CD setup wizard

A Insert the Resource CD and run the Autorun.exe. Select TL-WR841N or TL-WR841ND and click Easy Setup Assistant.



B Choose your language and click START. Follow the step-by-step screen instructions to complete the configuration.



# Tether App

TP-LINK's Tether app lets you conveniently access the router and:

- View information about the clients on your network.
- Block network access from specific users or devices.
- Set up Parental Control with access time and content restrictions.
- Change the basic wireless network settings easily.

Then, how to begin?

- 1 Scan the QR code and download the TP-LINK Tether app from the Apple App Store or Google Play.
- 2 Ensure your smart device is wirelessly connected to the home network.
- 3 Launch the Tether app and start managing your home network.



# FAQ (Frequently Asked Questions)

## Q1. What can I do if the login window does not appear?

- If the computer is set to a static or fixed IP address, change it to obtain an IP address automatically.
- Verify that 'http://tplinkwifi.net' is correctly entered in the web browser. Alternatively, enter 'http://192.168.0.1' in the web browser and press 'Enter'.
- Use another web browser and try again.
- Reboot your router and try again.
- Disable the network adapter used currently and then enable it again.

## Q2. What can I do if I cannot access the Internet?

- Check if the Internet is working properly by connecting a computer directly to the modem via Ethernet cable. If not, contact your Internet Service Provider.
- Open a web browser, enter 'http://tplinkwifi.net' and try to set up again.
- Reboot your router and try again.

Note: For cable modem users, reboot the modem first. If the problem still exists, go to Network>MAC Clone, then click Clone MAC Address and Save.

## Q3. How do I restore the router to its factory default settings?

- While the router is powered on, press and hold the 'WPS/RESET' button on the rear panel of the router for approximately 8 seconds.
- Log in Web Management page of the router, and go to System tools->Factory Defaults, click Restore, and then wait until the progress bar loading finished.

## Q4. What can I do if I forget my web management page password?

- Restore the router to its factory default settings and then use the default User Name 'admin' and Password 'admin' to log in.

## Q5. What can I do if I forget my wireless network password?

- The factory default password can be found on the product label printed on the bottom of the router.
- If you have changed your password, log in to the router's Web Management page, go to Wireless>Wireless Security to obtain or reset your password.

Note: If your questions are not answered here, please refer to <http://www.tp-link.com/en/support/faq> and click Contact Technical Support for further assistance.