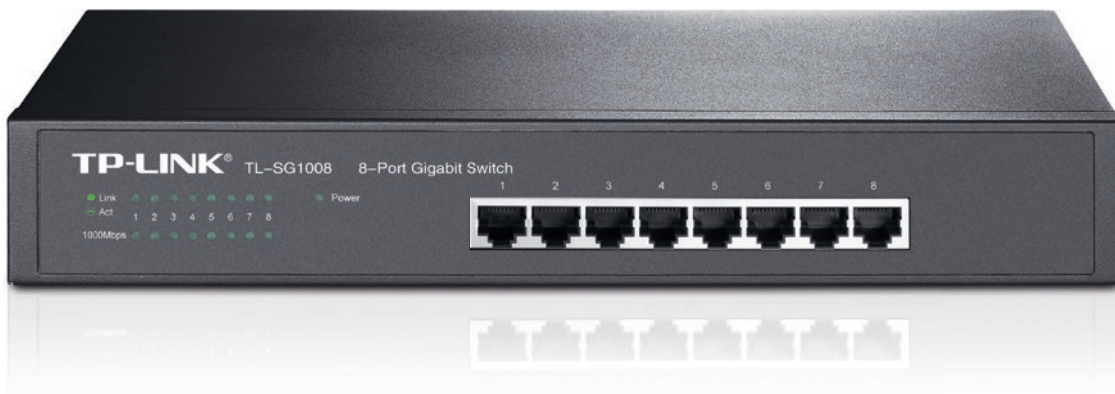


8-Port Gigabit Switch

TL-SG1008 Datasheet



Overview

The TL-SG1008 provides 8 10/100/1000Mbps RJ45 ports, with all ports support Auto-MDI/MDIX, there is no need to worry about the type of cable to use. Featuring full duplex mode, TL-SG1008 can process data at a rate up to 2000Mbps, making it an ideal choice for expanding your high performance wired network. Moreover, with innovative energy-efficient technology, TL-SG1008 can save the power consumption, making it an eco-friendly solution for your home or office network.

Gigabit Switch

Featured 10/100/1000Mbps ports, TL-SG1008 greatly expands your network capacity, enabling instant large files transferring. So, power users in the home, office, workgroup, or creative production environment can now move large, bandwidth-intensive files faster. Transfer graphics, CGI, CAD, or multimedia files across the network instantly.

High Performance


All 8 ports are Gigabit RJ-45 ports which can provide large file transferring and also be compatible with 10Mbps and 100Mbps Ethernet devices. Featuring non-blocking switching architecture, TL-SG1008 forwards and filters packets at full wire-speed for maximum throughput. With 16KB Jumbo frame, the performance of large files transfers is improved significantly. And IEEE 802.3x flow control for Full Duplex mode and backpressure for Half Duplex mode alleviate the traffic congestion and make The TL-SG1008 work reliably. It's a perfect choice to update your network to Gigabit while protecting your previous investment properly.

Easy to Use

The auto features of this gigabit switch make installation plug and play and hassle-free. No configuring is required. Auto MDI/MDIX eliminates the need for crossover cables. Auto-negotiation on each port senses the link speed of a network device (10, 100, or 1000 Mbps) and intelligently adjusts for compatibility and optimal performance.

Specifications

Hardware Features & Performance

Product Picture	
Model	TL-SG1008
Standards	IEEE 802.3, IEEE 802.3u, IEEE 802.3 ab, IEEE 802.3x, IEEE 802.1p
Network Ports	8*10/100/1000Mbps RJ45 ports
Auto Negotiation	YES
Auto MDI/MDIX	YES
Forwarding Mode	Store and Forward
Switch Capacity	16 Gbps
MAC Address Table	4 K
Jumbo Frame	16 KB
Flow Control	YES
Advanced Features	802.1p/DSCP QoS
Fanless	YES
Power Consumption	Maximum: 4.08W (220V/50Hz)
LED	Power, 1000Mbps, Link/Act
Dimensions	294*180*44 mm
Operating Temperature	0°C~40°C (32°F~104°F)
Storage Temperature	-40°C~70°C (-40°F~158°F)
Operating Humidity	10%~90% non-condensing
Storage Humidity	5%~90% non-condensing
Ordering Information	8-Port Gigabit switch

www.tp-link.com

Specifications are subject to change without notice. TP-LINK is a registered trademark of TP-LINK Technologies Co., Ltd. Other brands and product names are trademarks or registered trademarks of their respective holders. Copyright © 2016 TP-LINK TECHNOLOGIES CO., LTD. All rights reserved.