

How to Use the Modem Bin File

We assume that you have downloaded **Modem Bin File** you need.

And **please note:** after you upload the Bin File into the router, if you restore the router, you must reupload the Bin File again. So we suggest you to pay attention to our firmware release. Firmware upgrade is the final stable solution.

Here we take Huawei EC169 as an example.

Before I upload the **Modem Bin File**, please go to Network->3G page, and I find picture below. Then click the "Modem Settings"

3G	
3G USB Modem:	Unknown Modem Click here to configure the modem manually.
Signal Strength:	<div style="background-color: #ccc; width: 100%; height: 15px; display: inline-block;"></div> 0%
IP Address:	0.0.0.0
Subnet Mask:	0.0.0.0
Default Gateway:	0.0.0.0
DNS Server:	0.0.0.0 , 0.0.0.0
Online Time:	0 day(s) 00:00:00 Connecting...

Then I go to **Network->3G** page, click **Modem settings**.

Connection Mode: Connect on Demand
 Connect Automatically
 Connect Manually
Max Idle Time: minutes (0 means remain active at all times)

MTU Size (in bytes): (The default is 1480, do not change unless necessary)

Use the following DNS Servers

Primary DNS:

Secondary DNS: (Optional)

In the new page, please click **Add New**.

Status
Quick Setup
QSS
Network
- Internet Access
- 3G
- WAN
- MAC Clone
- LAN
Wireless

3G USB Modem Settings

ID	Vendor	Model	Delete
<input type="button" value="Add New..."/> <input type="button" value="Delete All"/>			
<input type="button" value="Back"/>			

And then, please upload the **Modem Bin File**.

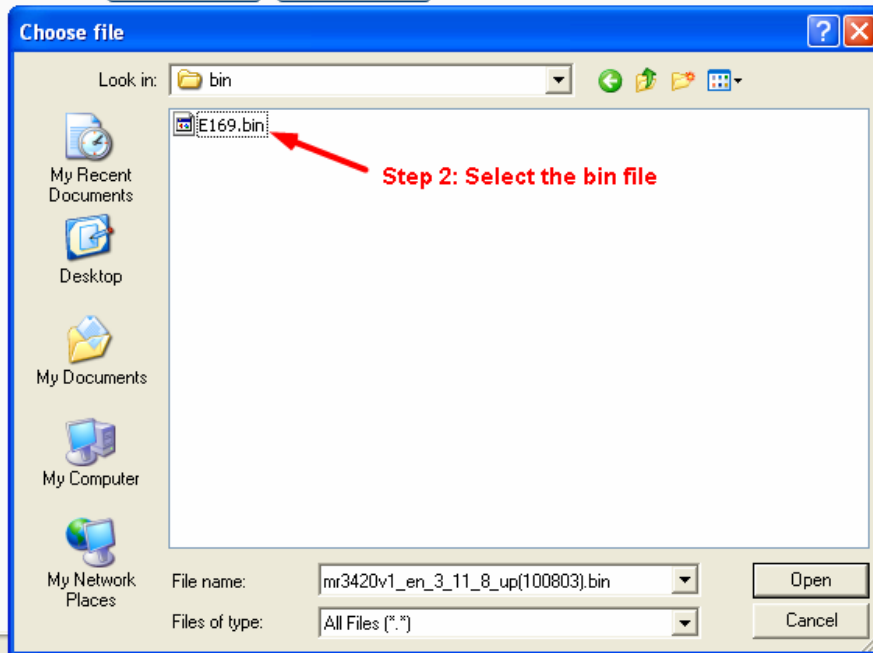
Upload 3G USB Modem Configuration File

File:

Step 1: Browse

Please Note: If you restore the router's factory setting, the bin file will be lost. In the event that you do lose the bin file, you will need to re-upload it, or download our latest firmware from www.tp-link.com. The updated firmware will be installed into your 3G router and restore all of its functions.

Step 3: Upload




Finally, please **reboot** your 3G router, go to **System Tools-- Reboot..**

Reboot

Click this button to reboot the device.

After the router reboots, the modem will be identified by the 3G router automatically.

3G

3G USB Modem:	EC169
Signal Strength:	 100%
IP Address:	113.113.241.119
Subnet Mask:	255.255.255.255
Default Gateway:	113.113.241.119
DNS Server:	202.96.128.86 , 220.192.32.103
Online Time:	0 day(s) 00:00:02

If the modem has been identified by the 3G router but you still can not have Internet, please refer to another FAQ **Why I can't have Internet with an identified 3G Modem.**

If the modem still can not be identified by the 3G router, please feel free to contact the reseller where you bought this 3G router from, they will help you work this out.

For other questions, please feel free to contact [TP-LINK support](#).