

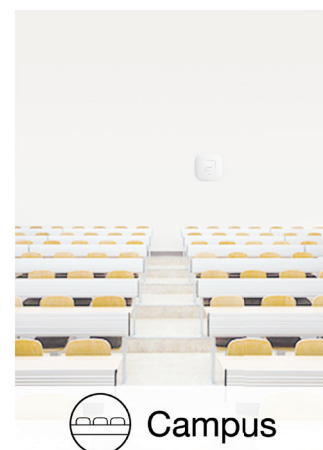
**BUSINESS  
WLAN  
SOLUTION**



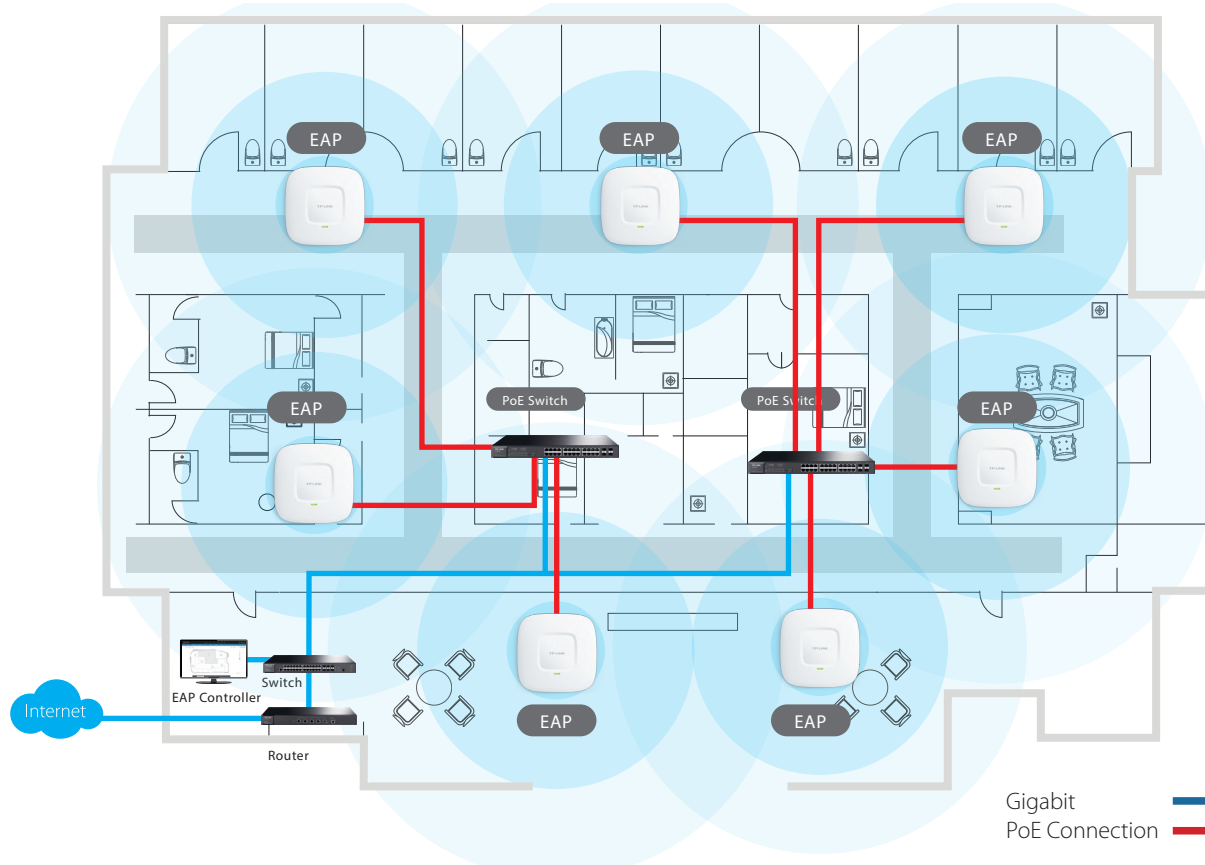
**N600 Wireless Gigabit Ceiling  
Mount Access Point**  
EAP220

## Application Scenarios:

With high gain internal antennas, specially designed enclosure, and PoE power supply, EAP series of TP-LINK provide incredible wireless coverage and reliability, ideal for business applications, such as markets, hotels, companies and campuses.

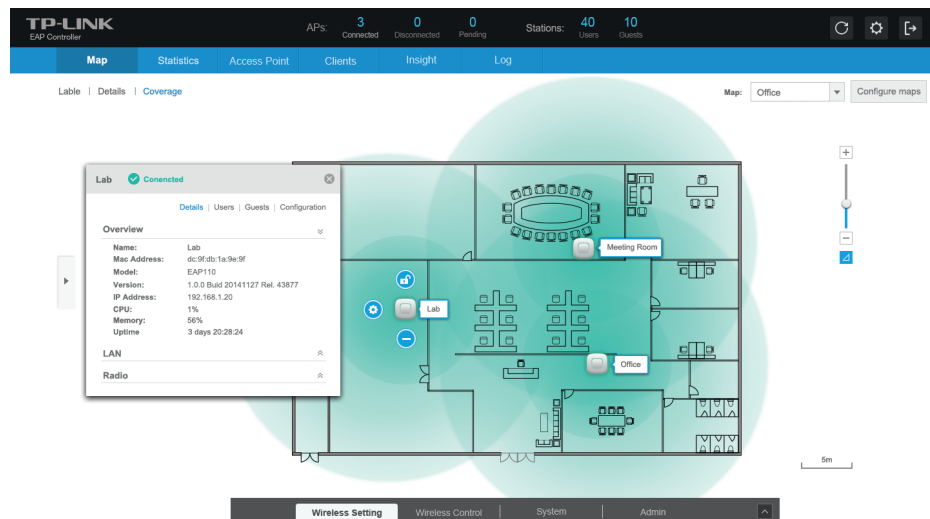


## WLAN Solution for Hotel as an Example:



## Free Centralized Management Platform:

- Configure unified wireless settings and automatically synchronize to all EAPs in the same network
- Map function allows administrators to upload floor plans to simplify and visualize the current network deployment
- Batch firmware update for effective administration

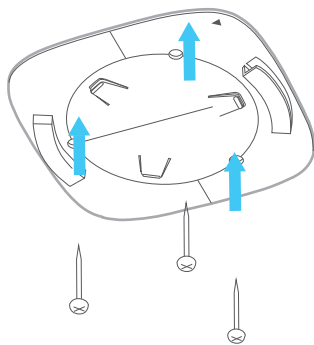


## Flexible Placement - Easy mounting design & PoE: Support

The EAP's "ceiling lamp" appearance and easy mounting design with chassis make it easy to be integrated seamlessly into any wall or ceiling surface to blend in with most interior decorations. EAP series APs support Power over Ethernet (PoE) to make deployment effortless and flexible.

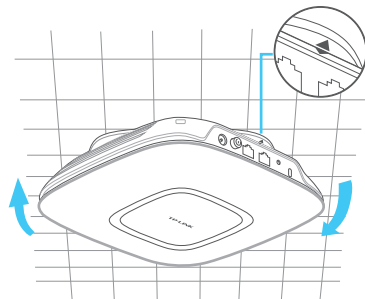
1

Secure the mounting bracket onto the ceiling



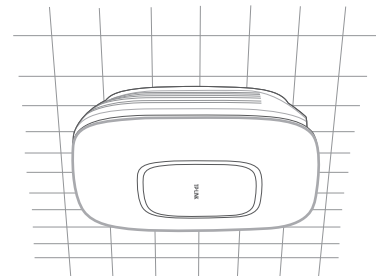
2

Fasten the EAP on the bracket and turn clockwise to lock it




3

Done



EAP SERIES FOR BUSINESS WLAN SOLUTIONS

Product Picture			
Model	EAP220	EAP120	EAP110
Product Description	N600 Wireless Dual Band Gigabit Access Point	300Mbps Wireless N Gigabit Access Point	300Mbps Wireless N Access Point
Standards	IEEE 802.11 a/b/g/n	IEEE 802.11 b/g/n	
Speed	2.4GHz: 300Mbps 5GHz: 300Mbps	2.4GHz: 300Mbps	
Ethernet Port	1 10/100/1000Mbps Port		
PoE	802.3af		24V Passive PoE
Internal Antennas	4* 4dBi	2* 4dBi	2* 3dBi
EAP Controller Software	●		
Captive Portal Authentication	●		
MAC Filtering	●		
Wireless Isolation Between Clients	●		
SSID to VLAN Mapping	●		
Rogue AP Detection	●		
802.1X Support	●		
WPA/WPA2-Enterprise	●		
Multiple SSIDs	16	8	
Automatic Channel Management	●		
QoS (WMM)	●		
Wireless Schedule	●		
Load Balance	●		