

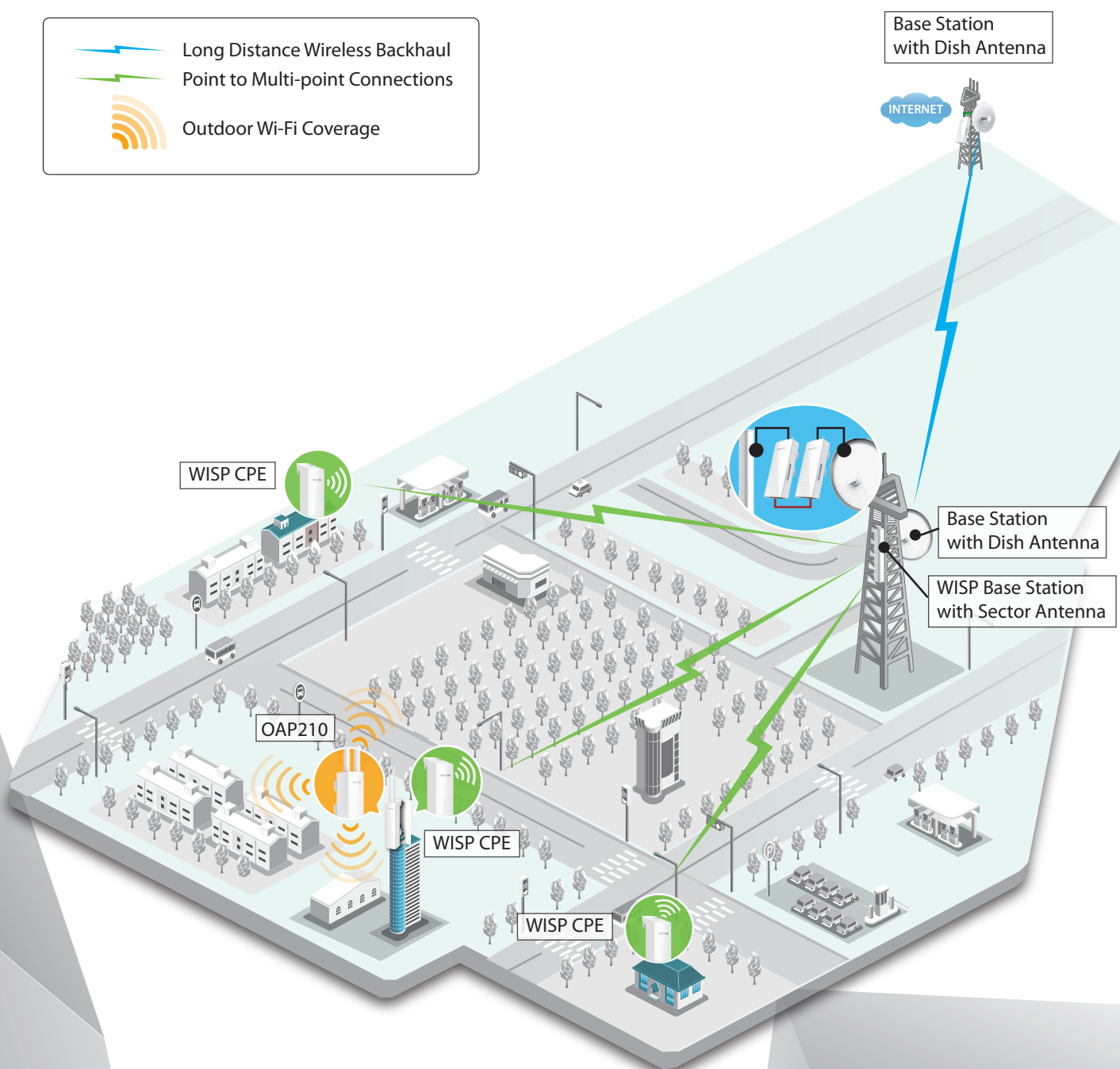
OUTDOOR Wi-Fi SOLUTION



PHAROS 

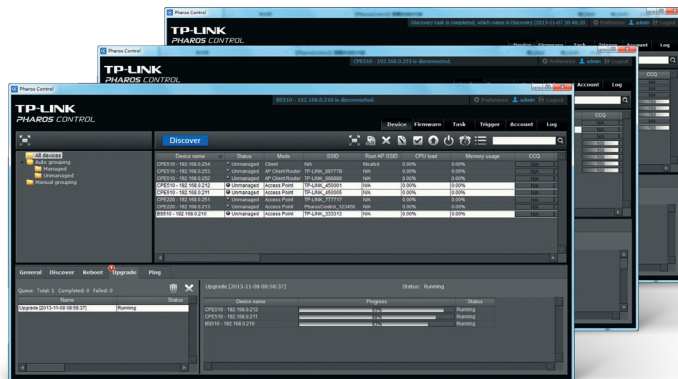
PHAROS

TP-LINK's next generation product series is dedicated to cost effective solutions for outdoor wireless networking applications. The series includes Base Stations, CPEs, various types of external antennas, and a centralized management application, which are flexible and ideal for point-to-point, point-to-multipoint and outdoor Wi-Fi coverage applications. Professional performance, coupled with user-friendly design, makes TP-LINK's Pharos series an ideal choice for both business and home users.



Free Centralized Management Platform:


Pharos comes equipped with centralized management software that helps users easily manage all the devices in their network from a single PC - Pharos Control. Functions like device discovery, status monitoring, firmware upgrading, and network maintenance can be managed using Pharos Control.



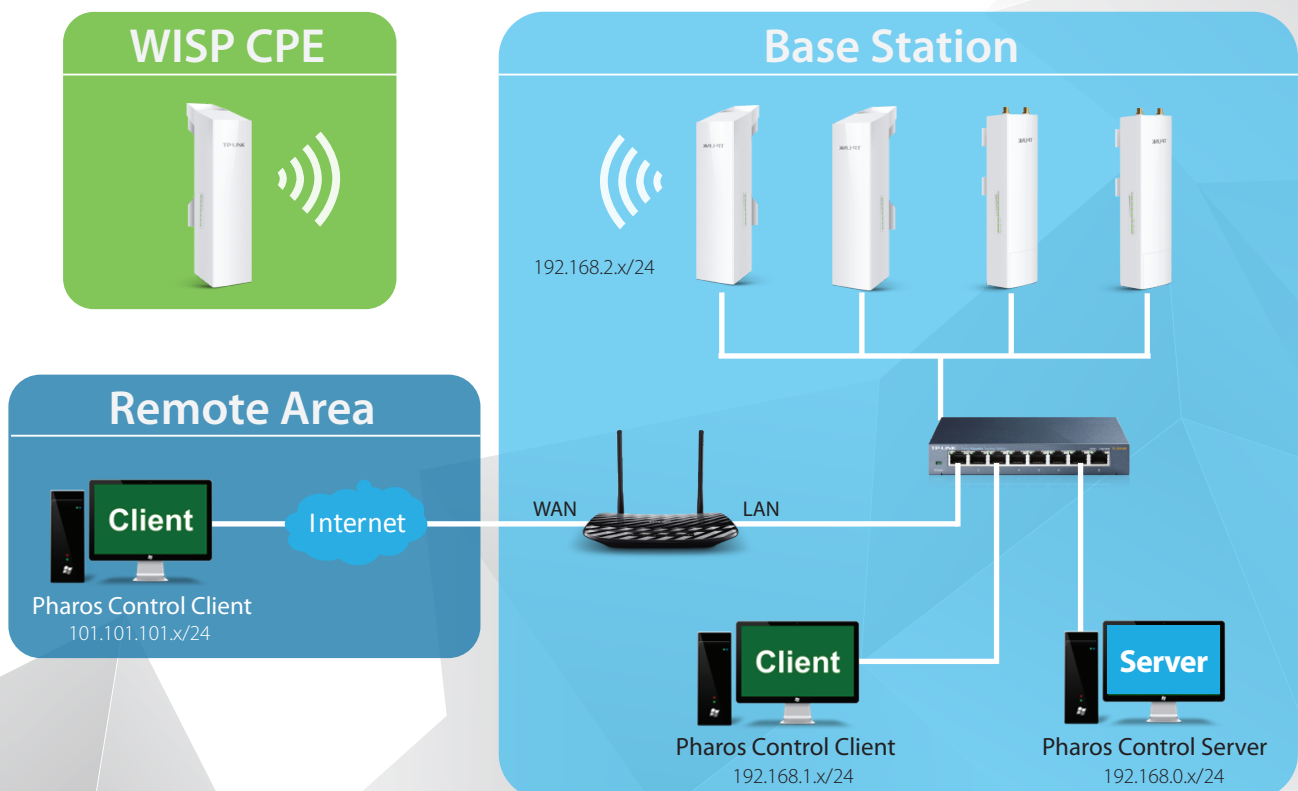

Device Discovery &
Status Monitoring


Firmware Upgrades
& Configuration


Scheduled Operations
& Maintenance Tasks


Event Notifications
via Email





Easy Deployment:



Note:

The Pharos Control server must be installed on a PC in the local network with the Pharos devices. The Pharos Control client can be install on any PC at anywhere as long as there is network connectivity from the client to the server. Pharos Control is capable of managing Pharos devices only.

PHAROS SERIES OUTDOOR APs

	Base Station		CPE	
Model	 WBS510	 WBS210/OAP210	 CPE510	 CPE210
Description	5GHz 300Mbps Outdoor BaseStation	2.4GHz 300Mbps Outdoor BaseStation	5GHz 300Mbps 13dBi Outdoor CPE	2.4GHz 300Mbps 9dBi Outdoor CPE
Frequency	5.15~5.85GHz	2.4~2.483GHz	5.15~5.85GHz	2.4~2.483GHz
Processor	Atheros MIPS 74Kc, 560MHz			
Memory	64MB DDR2, 8MB Flash			
Compatibility	802.11a/n	802.11 b/g/n	802.11a/n	802.11 b/g/n
Antenna	--	~5dBi	13dBi	9dBi
External Antenna Interface	2 RP-SMA connectors for MIMO antenna		--	
Transmission Power	30dBm		27dBm	
Weatherproof Enclosure	●			
ESD Protection	15KV			
Lightning Protection	6KV			
Dual Ethernet Port	1 10/100/1000Mbps + 1 10/100Mbps		2 10/100Mbps	
Grounding Protection Terminal	●			
Power Supply	24V Passive PoE Adapter			
Operation Modes	AP / Client / Bridge / Repeater / AP Client Router (WISP Client) / AP Router Mode			
Advanced Functions	MAXtream TDMA (Time Division Multiple Access) & Tx-Beamforming Technologies			
Remote Management	Central Network Management Applications; Web-based GUI management; SNMP v2c			
Utilities	Spectrum Analyzer; Wireless Statistics; Antenna Adjustment; Distance Adjustment; Ping Watch Dog; Throughput Monitor; Wireless Speed Monitor			
Security	WEP, WPA/WPA2, WPA-PSK/WPA2-PSK			
Certifications	CE, FCC, RoHS, IPX5			
Dimentsions (W x D X H)	197.8x 75.1x 40.9 mm		224.3 x 79 x 60.3 mm	
Operating Environments	Operating Temperature: -30°C ~70°C (-22°F ~158°F); Storage Temperature: -40°C ~70°C (-40°F ~158°F); Operating Humidity: 10%~90% non-condensing; Storage Humidity: 5%~90% non-condensing			
Package Contents	Outdoor CPE/BaseStation, 24V/1A PoE Adapter, Pole Mounting Strap, Installation Guide			