

Quick Installation Guide

54Mbps Wireless USB Adapter

MODEL NO. TL-WN321G

Package Contents



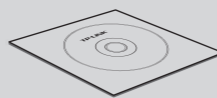
TL-WN321G



QIG



USB Cable



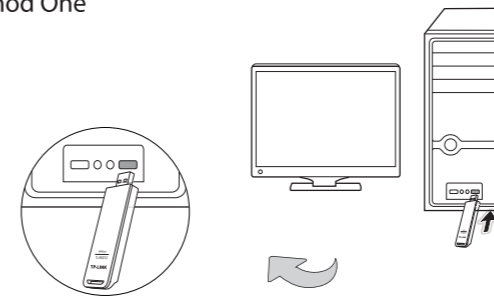
Resource CD

System Requirement

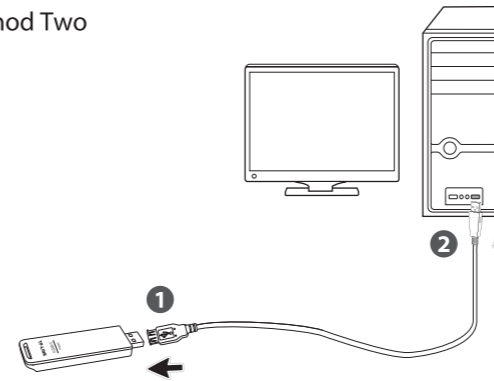
· Windows 7 · Windows Vista · Windows XP

1 Hardware Connection

Method One



Method Two



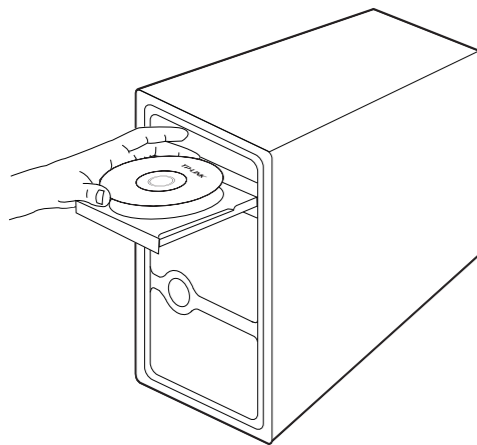
You may see the **Found New Hardware Wizard** when the adapter is plugged. Please click 'Cancel'.



2 Software Installation

(The installation procedures in Windows XP/Vista/7 are similar. Here takes the procedures in Windows XP for example.)

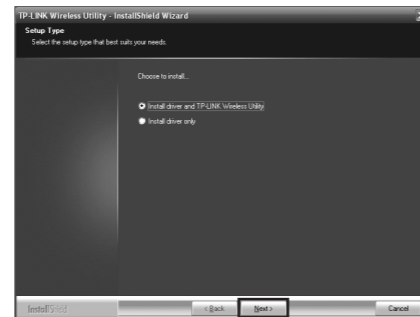
- 1 Insert the TP-LINK Resource CD into the CD-ROM drive.



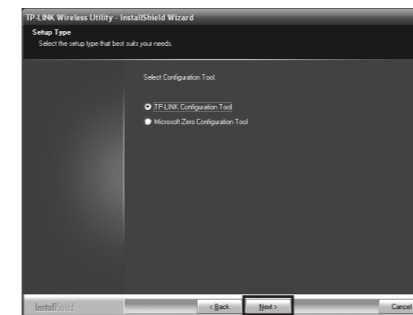
- 2 Choose 'Install Driver & Utility'.



- 3 Select 'Install driver and TP-LINK Wireless Utility' and click 'Next' to install the driver and utility for your adapter.

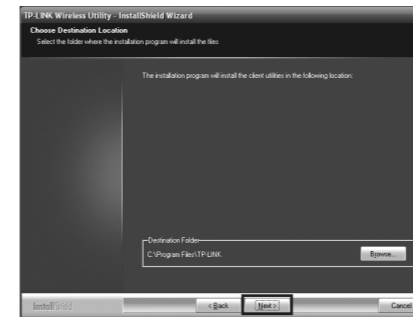


- 4 Select 'TP-LINK Configuration Tool' and click 'Next' to continue.

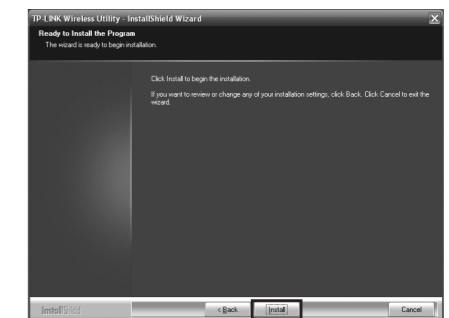


In Windows 7 and Windows Vista, this screen will not pop up. Please skip to Step 5.

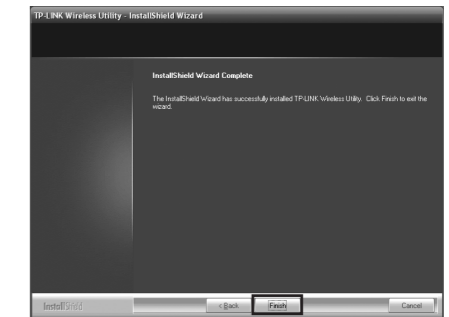
- 5 Choose the destination location and click 'Next' to continue.




- 6 Click 'Install' to continue.

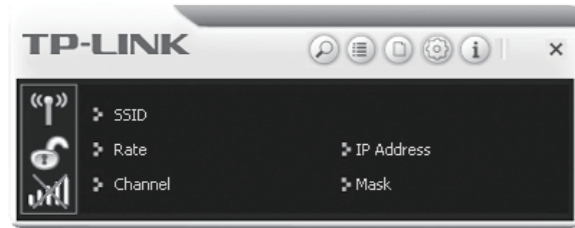


- 7 Click 'Finish' to complete the software installation.





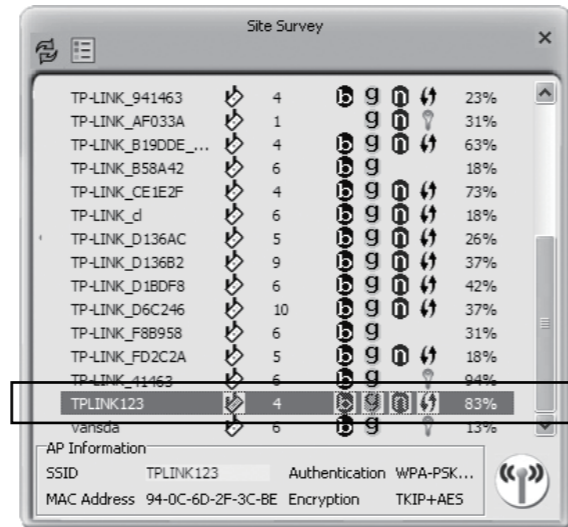
3 Connect to network (The configuration procedures in Windows XP/ Vista/ 7 are similar.)

1 After installing the adapter, the icon  will appear at the right-bottom of the screen. Double-click the icon to launch the config utility.



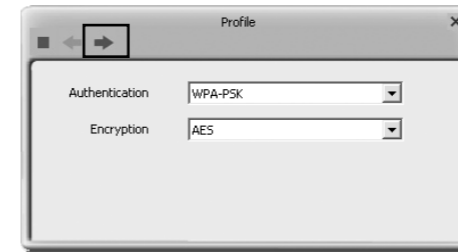
Note If your wireless router features the QSS function (other brands may call it WPS), you can skip to the **Appendix: Connect to Wireless Router by QSS** to set up a wireless connection.

2 Click the **Site Survey** icon  in the tools section, and then highlight your target network (for example, TPLINK123) . Click the **Connect** icon  to build a connection .

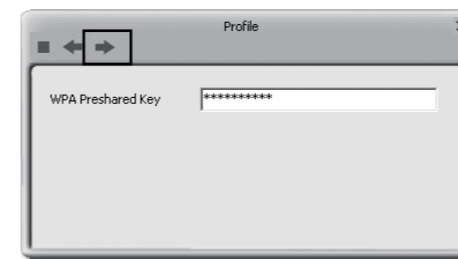


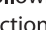
Note If the target network is not security-enabled, screens in Step 3 and Step 4 will not pop up and you will be directly prompted to Step 5.

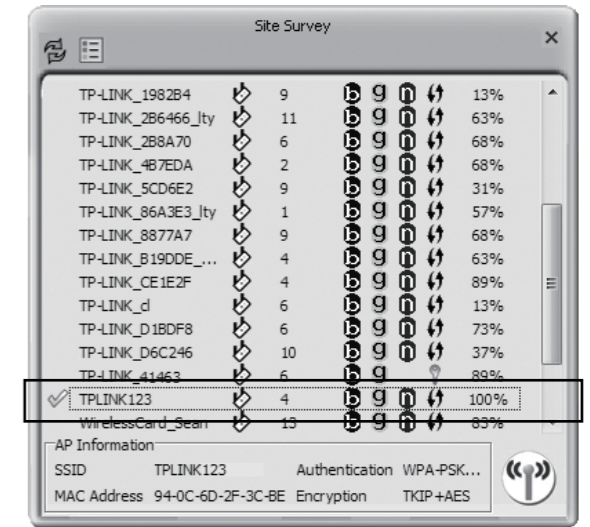
3 The target network's Authentication mode and Encryption type will be displayed automatically. Please click the **Next** icon to continue .



4 Input the network key and click **Next** to continue.



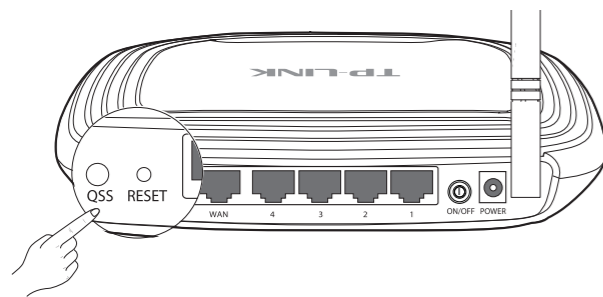
5 Then the connection status will appear on the following screen. The icon  indicates a successful connection.



Appendix: Connect to Wireless Router by QSS

If your wireless router features the QSS function (other brands may call it WPS), you can also set up a wireless connection in this way.

1 Push the QSS button on the back panel of the Router. Here takes router TL-WR741ND for example.

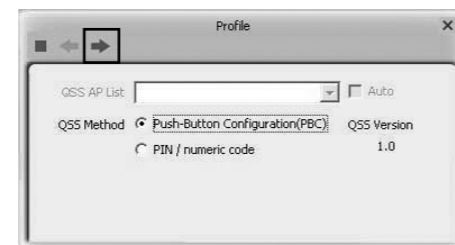


Note For detailed instructions of QSS, please refer to the User Guide on the Resource CD.

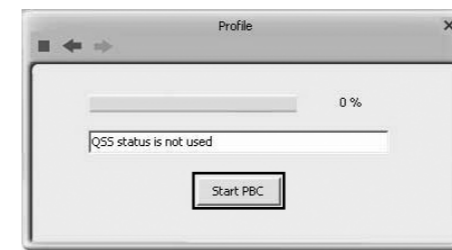
2 Click the **Add QSS Profile** icon on the screen below.



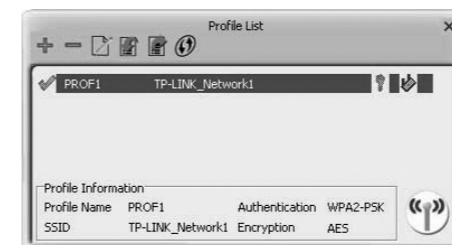
3 Select **Push-Button Configuration(PBC)** on the screen below and click **Next**.



4 Click **Start PBC**.



5 Then wait a moment until the screen below appears.



Technical Support

- For more troubleshooting help, go to www.tp-link.com/support/faq.asp
- To download the latest Firmware, Driver, Utility and User Guide, go to www.tp-link.com/support/download.asp
- For all other technical support, please contact us by using the following details:

Global
Tel: +86 755 26504400
E-mail: support@tp-link.com
Service time: 24hrs, 7 days a week

Australia & New Zealand
Tel: AU 1300 87 5465
NZ 0800 87 5465
E-mail: support@tp-link.com.au
Service time: 24hrs, 7 days a week

Singapore
Tel: +65 62840493
E-mail: support.sg@tp-link.com
Service time: 24hrs, 7 days a week

Malaysia
Tel: 1300 88 875465 (1300 88TPLINK)
E-mail: support.my@tp-link.com
Service time: 24 hours a day, 7 days a week

UK
Tel: +44 (0) 845 147 0017
E-mail: support.uk@tp-link.com
Service time: 24hrs, 7 days a week

Turkey
Tel: 444 19 25 (Turkish Service)
E-mail: support.tr@tp-link.com
Service time: 9:00 AM to 6:00 PM, 7 days a week

USA/Canada
Toll Free: +1 866 225 8139
E-mail: support.usa@tp-link.com
Service time: 24hrs, 7 days a week

Italy
Tel: +39 02 66987799
E-mail: support.it@tp-link.com
Service time: 9:00 AM to 6:00 PM, from Monday to Friday

Germany / Austria
Tel: +49 1805 875465 (German Service) / +49 1805 TPLINK
E-mail: support.de@tp-link.com
Fee: 0.14 EUR/min from the German fixed phone network and up to 0.42 EUR/min from mobile phone.
Service Time: Monday to Friday 9:00 AM to 6:00 PM. GMT+1 or GMT+2 (Daylight Saving Time in Germany)
* Except bank holidays in Hesse

Switzerland
Tel: +41 (0)848 800998 (German service)
E-mail: support.ch@tp-link.com
Fee: 4-8 Rp/min, depending on rate of different time
Service Time: Monday to Friday 9:00 AM to 6:00 PM. GMT+1 or GMT+2 (Daylight Saving Time)