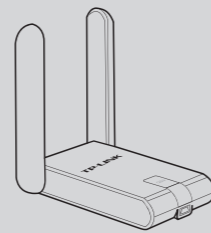


Quick Installation Guide

300Mbps High Gain Wireless N USB Adapter

MODEL NO. TL-WN822N

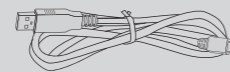
Package Contents



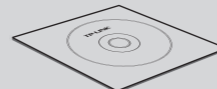
TL-WN822N



QIG



USB Cable



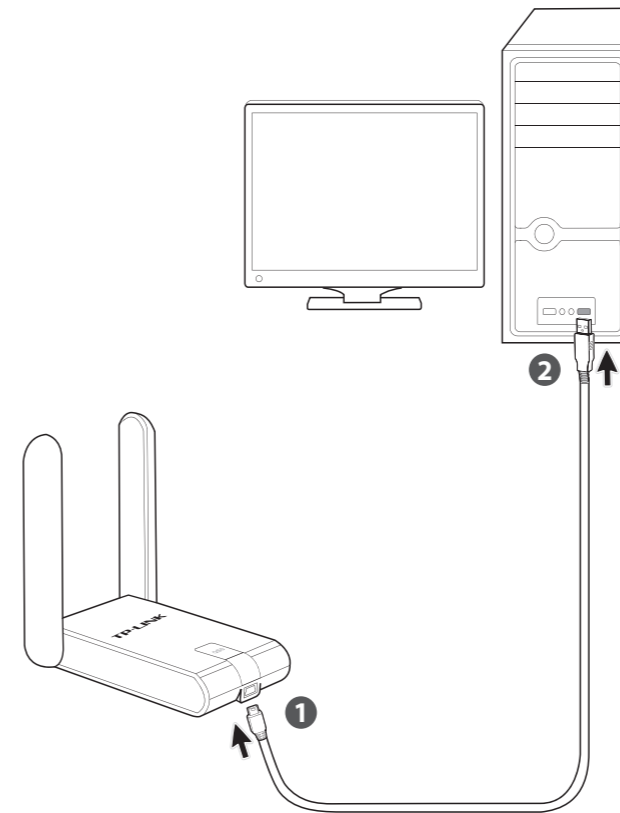
Resource CD

System Requirement

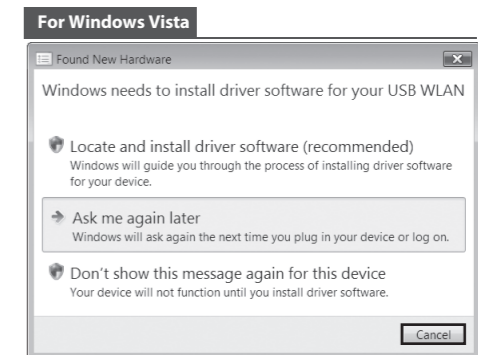
- Windows 7
- Windows Vista
- Windows XP

1 Hardware Connection

Connect the adapter and your computer with the provided USB cable.

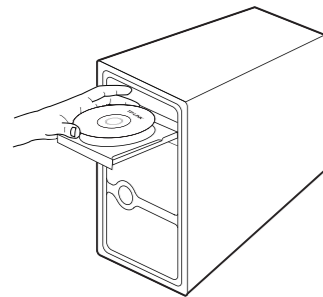


You may see the **Found New Hardware Wizard** after the adapter has been inserted. Please click **Cancel**.



2 Software Installation (The installation procedures in Windows 7/ Vista/ XP are similar. Here takes the procedures in Windows 7 for example.)

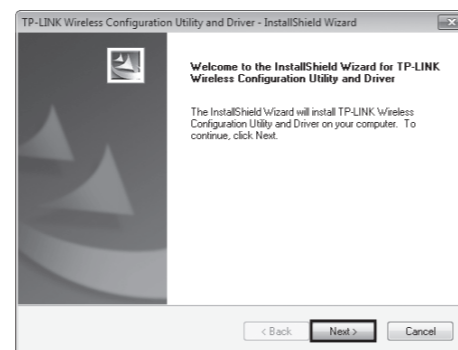
- 1** Insert the TP-LINK resource CD into the CD-ROM drive.



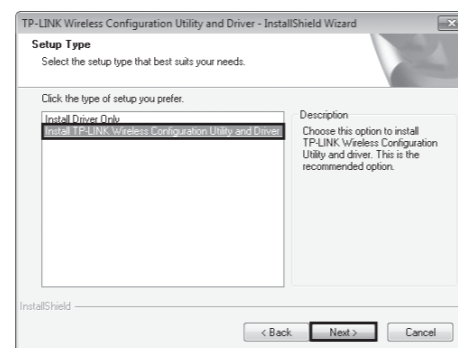
- 2** Find the appropriate model and choose **Install Driver&Utility**.



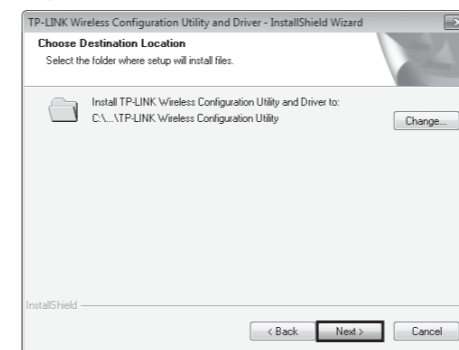
- 3** The **InstallShield Wizard** window will appear. Click **Next** to continue.



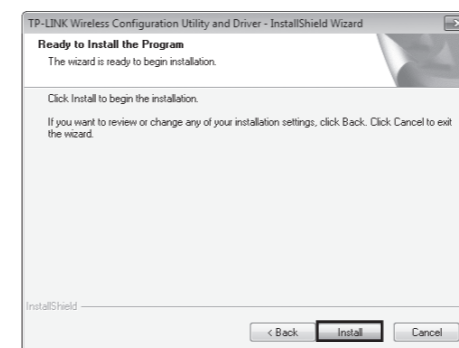
- 4** Select **Install TP-LINK Wireless Configuration Utility and Driver** and then click **Next**.



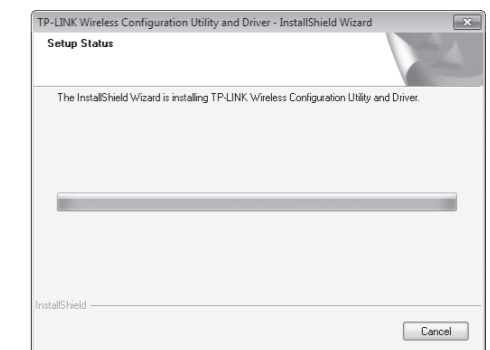
- 5** Click **Change** to specify the destination location or you can leave it default. Click **Next** to continue.



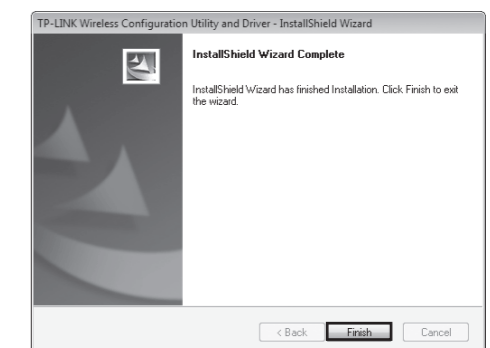
- 6** Click **Install** to install the driver and utility for your adapter.



- 7** The drivers and utility will install. This may take 1~2 minutes.



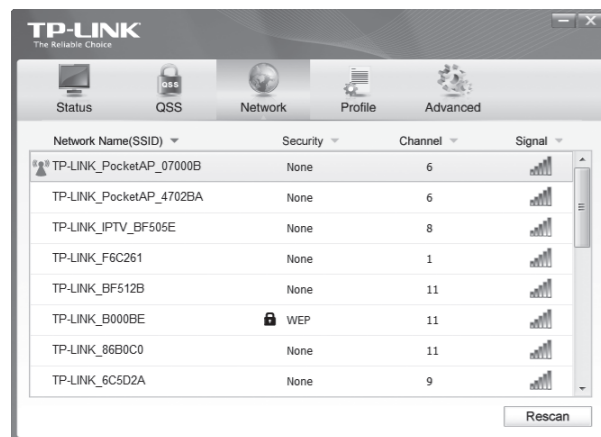
- 8** The following screen will then appear. Click **Finish** to complete the setup.



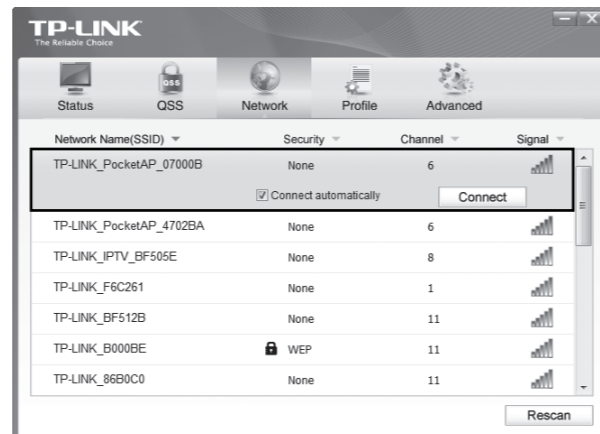
3 Connect to network

(You can skip to **Appendix: Connect to Wireless Router by QSS** to quickly connect to a network if your router or access point features QSS or WPS function.)

1 After installation, the configuration page will pop up on your desktop.



2 Click **Network** in the tools section to display a list of available wireless networks. Highlight the target network name (e.g. TP-LINK_PocketAP_07000B) and then click **Connect** to build a connection.



3 If the network is unsecured, you will directly connect to it. If it is security-enabled, there are two ways to connect to it.

Method One:

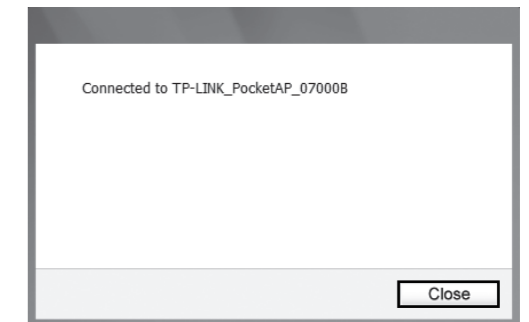
Input the security key into the field beside **Security Key** and click **OK** to continue.

Method Two:

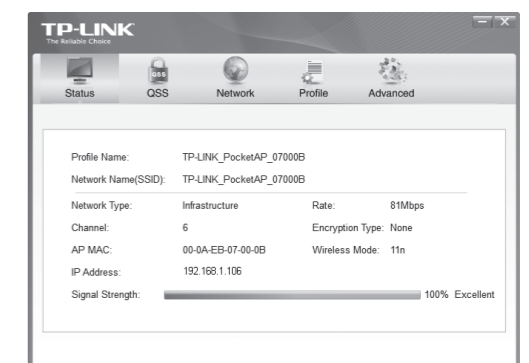
Without entering a key, push the QSS (other brands may call it WPS) button on your router if prompted to **You can also connect by pushing the button on the router** as shown below. Then click **OK** to continue.




4 The following screen indicates successful connectivity. Click **Close** to enjoy the Internet.



5 To view more information about the network connected, click **Status** in the tools section.

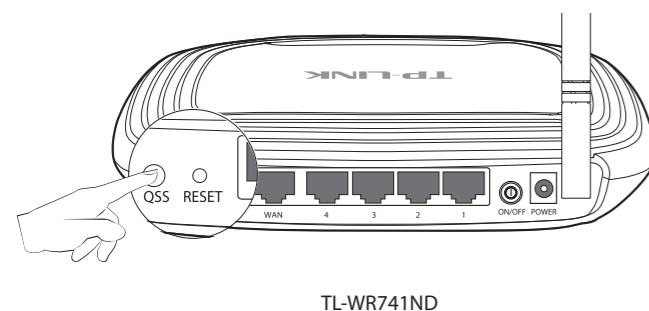


Note The icon  will appear on your desktop. Double-clicking on the icon can also start the utility.

Appendix: Connect to Wireless Router by QSS

If your wireless router features the QSS function (other brands may call it WPS), you can also set up a wireless connection in this way.

1 Push the QSS button on the back panel of the Router. Here takes router TL-WR741ND for example.



2 Press and hold the QSS button on the adapter for 2~3 seconds until Figure 2 appears.

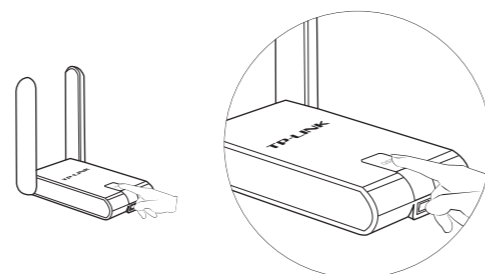


Figure 1

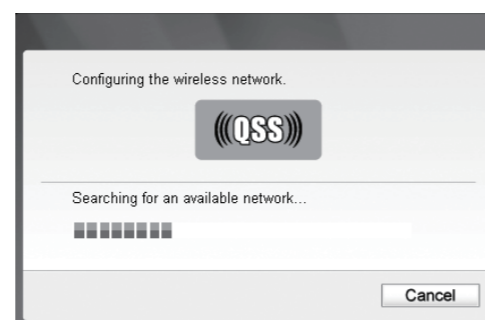


Figure 2

3 Wait for the connection progress to be completed. The following screen indicates successful connectivity. Click **OK** to finish the QSS connection.



Note For detailed instructions of QSS, please refer to the User Guide on the resource CD.

Technical Support

- For more troubleshooting help, go to www.tp-link.com/support/faq.asp
- To download the latest Firmware, Driver, Utility and User Guide, go to www.tp-link.com/support/download.asp
- For all other technical support, please contact us by using the following details:

<p>Global Tel: +86 755 26504400 E-mail: support@tp-link.com Service time: 24hrs, 7days a week</p>	<p>Australia & New Zealand Tel: AU 1300 87 5465 NZ 0800 87 5465 E-mail: support@tp-link.com.au Service time: 24hrs, 7 days a week</p>
<p>Singapore Tel: +65 62840493 E-mail: support.sg@tp-link.com Service time: 24hrs, 7days a week</p>	<p>Indonesia Tel: (+62) 021 6259 135 E-mail: support.id@tp-link.com Service time: Monday to Friday 9:00 -12:00; 13:00 -18:00 * Except public holidays</p>
<p>UK Tel: +44 (0) 845 147 0017 E-mail: support.uk@tp-link.com Service time: 24hrs, 7days a week</p>	<p>Russian Federation Tel: 8 (495) 223-55-60 8 (800) 250-55-60 (toll-free call from any RF region) E-mail: support.ru@tp-link.com Service time: From 10:00 to 18:00 (Moscow time) *Except weekends and holidays in Russian Federation</p>
<p>USA/Canada Toll Free: +1 866 225 8139 E-mail: support.usa@tp-link.com Service time: 24hrs, 7days a week</p>	<p>Switzerland Tel: +41 (0)848 800998 (German service) E-mail: support.ch@tp-link.com Fee: 4-8 Rp/min, depending on rate of different time Service time: Monday to Friday 9:00 AM to 6:00 PM. GMT+1 or GMT+2 (Daylight Saving Time)</p>
<p>Malaysia Tel: 1300 88 875465 (1300 88TPLINK) E-mail: support.my@tp-link.com Service time: 24 hrs a day, 7days a week</p>	<p>Germany / Austria Tel: +49 1805 875465 (German Service) / +49 1805 TPLINK E-mail: support.de@tp-link.com Fee: 0.14 EUR/min from the German fixed phone network and up to 0.42 EUR/min from mobile phone. Service time: Monday to Friday 9:00 AM to 6:00 PM. GMT+1 or GMT+2 (Daylight Saving Time in Germany) * Except bank holidays in Hesse</p>
<p>Italy Tel: +39 02 66987799 E-mail: support.it@tp-link.com Service time: 9:00 AM to 6:00 PM, from Monday to Friday</p>	<p>Turkey Tel: 444 19 25 (Turkish Service) E-mail: support.tr@tp-link.com Service time: 9:00 AM to 6:00 PM, 7days a week</p>
<p>Ukrainian Tel: +380 (44) 590-51-14 E-mail: support.ua@tp-link.com Service time: Monday to Friday 14:00 PM to 22:00 PM</p>	