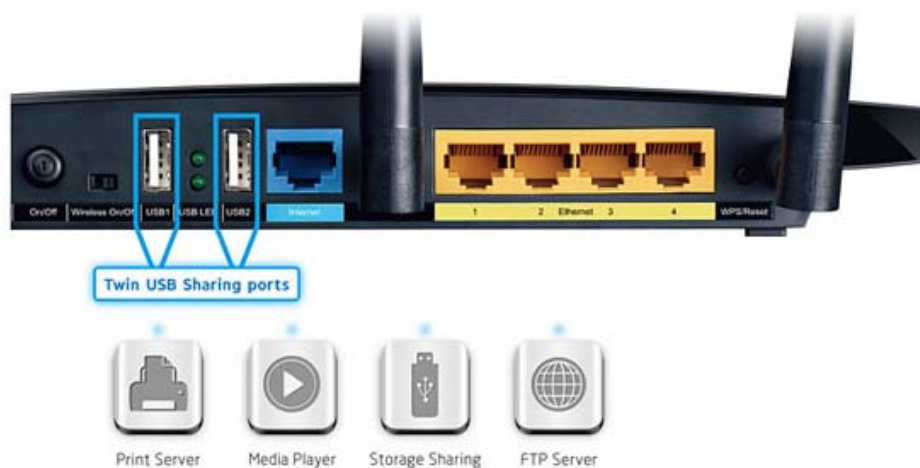


How to Use the Local Storage Sharing (Samba) Feature

The Local storage sharing feature allows you to share a USB storage device that's connected to the router, (USB Drive or mobile Hard Disk Drive) to other wired or wireless users on the same network.

HOW TO SET UP:

Plug the USB storage into the USB port of the TP-LINK router and wait until the USB LED is solid green.



You can access the USB Storage by the following steps:

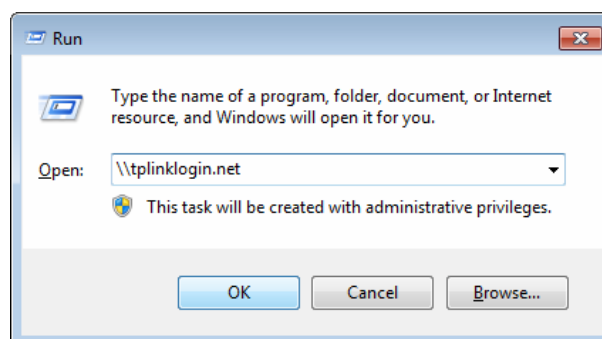
- **For Windows Users:**

Windows XP:

Go to **Start > Run**

Input **\\tplinklogin.net** in the dialog box.

Click **OK**



Windows Vista/7:

Go to **Start**

Type "**run**" in the search box

Open the run application

Input **\\tplinklogin.net** in the dialog box.

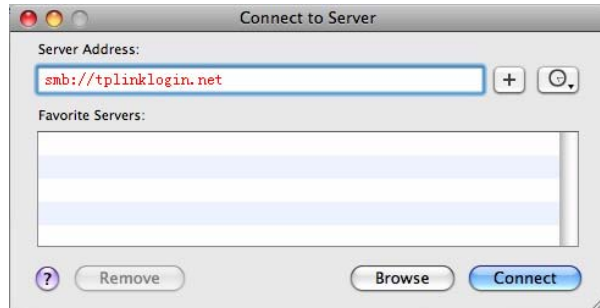
Click **OK**

● **For Mac OS X Users:**

On the top tray, go to **Go > Connect to Server**

Input Server Address **smb://tplinklogin.net**

Click **Connect**



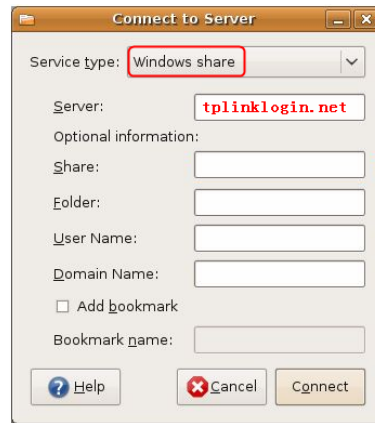
● **For Linux Users:**

On the top tray, go to **Places > Connect to Server**

Choose Service type **Windows share**

Input Server **tplinklogin.net**

Click **Connect**



If you encounter the error on the right, please input **/volume1** or **/volume9** in the Folder box.



Volume1~8 map the USB drive connecting to USB port 1;

Volume9~16 map the USB drive connecting to USB port 2.

Note:

Some USB storage devices may require using the bundled external power.

To setup different accounts for access rights protection, please log into to the Web management page and set it on USB Settings > Storage Sharing and USB Settings > User Accounts.