

# Quick Installation Guide

3G Mobile WiFi  
MODEL NO. M5350

EAC

7106505269 REV 3.1.0

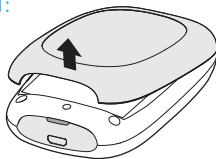
**TP-LINK®**  
The Reliable Choice  
©2015 TP-LINK

## Connecting to the Internet

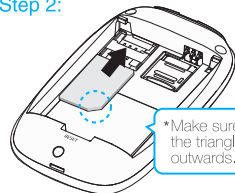
### 1 Hardware Installation

Open the cover upwards, and install the SIM card, battery as shown.

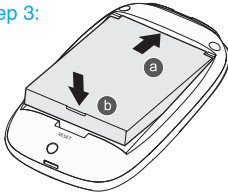
Step 1:



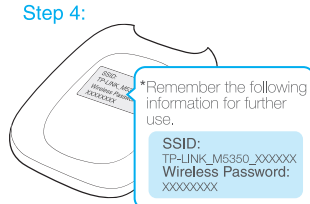
Step 2:



Step 3:



Step 4:



\*The SIM card is not provided by TP-LINK.

\*Micro or Nano SIM cards should be converted using provided SIM card trays.

\*Recommend using the provided battery.

#### Section A: Establish a Wireless Connection

Search for the Wireless Network name (SSID) and type in the Wireless Password that you have remembered before. You can also check the SSID and Wireless Password on the rear cover label.

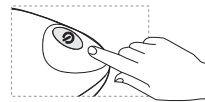
\*We suggest changing the wireless name and password on the web-management page for your own security.

#### Section B: Enter the PIN Code

1. Refer to [Section A](#) to establish a wireless connection.
2. Open a web browser and type <http://192.168.0.1> into the address bar, then enter the default login password: **admin**, and click **Log in**.
3. Choose **"Advanced->Dial-up->PIN Management"**, then enter the correct PIN code according to your ISP and click **Unlock** for the settings to take effect.

### 2 Turn on the M5350

Hold the **power button** until the screen is as shown below. (You can also hold the power button until the screen appears "power off" to turn off the M5350).



**TP-LINK**

### 3 Connecting to the Internet

When turned on, the M5350 will boot in 1 minute. You will then see one of the following messages. Please follow the corresponding instructions.



1. Refer to [Section A](#) to establish a wireless connection.
2. **Finish:** You can now enjoy the Internet.



1. Refer to [Section B](#) to enter the PIN code.
2. **Finish:** You can now enjoy the Internet.

**Note:** 1. If **"NO SERVICE"** appears on your screen, please verify the following and repeat step [3](#).

- Verify that your SIM card is a WCDMA or GSM SIM card.
- Verify that your SIM card is in your ISP's service area.
- Verify that your SIM card has sufficient credit.

2. If **"NO SIM CARD"** appears on your screen, please turn off the M5350 and repeat steps [1](#) ~ [3](#).

#### \*Advanced configuration

For advanced configuration, please enter the web-management page:

Open a web browser and type <http://192.168.0.1> into the address bar, then enter the default login password: **admin**, and click **Log in**.

## FAQ(Frequently Asked Questions)

#### FAQ1. What should I do if I cannot log into the web-management page?

1. Verify that your device is connecting to the M5350.
2. Verify that you entered the correct IP address <http://192.168.0.1>.
3. Verify that your device is obtaining an IP address automatically.

#### FAQ2. What should I do if I cannot access the Internet?

##### Tip1. Check the LAN connection

1. Open a web browser and type <http://192.168.0.1> into the address bar, then enter the default login password: **admin**, and click **Log in**.
2. Check if you can log into the web-management page successfully. If not, please refer to FAQ 1 and retry.

##### Tip2. Check your ISP parameters

1. Open a web browser and type <http://192.168.0.1> into the address bar, then enter the default login password: **admin**, and click **Log in**.
2. Choose **"Advanced->Dial-up->Profile Management"** to verify the parameters are correct with your ISP. These parameters include APN, User name and Password.
3. If these settings are not correct, please click **Create** to create a new profile with the correct parameters, and select **Dial-up** to choose the new profile from the Profile List.

##### Tip3. Check the current network connection mode

1. Check the network connection mode on the screen. (The  icon means auto connection mode and the  icon means manual connection mode)

2. If the current mode is manual, please open a web browser and type <http://192.168.0.1> into the address bar, then enter the default login password: **admin**, and click **Log in**.
3. Choose **"Advanced->Dial-up"** to check the network status, if the network is disconnected, click the **Connect** button to reconnect it.

##### Tip4. Check the Data Roaming

1. Please confirm with your ISP if you are in roaming service.
2. If roaming, please open a web browser and type <http://192.168.0.1> into the address bar, then enter the default login password: **admin**, and click **Log in**.
3. Choose **"Advanced->Dial-up"**, and then enable the Data Roaming.

##### Tip5. Check the SIM card status

1. Verify that your SIM card has sufficient credit.
2. Verify that your SIM card is in your ISP's service area.

#### FAQ3. How do I restore factory default settings?

**Tip1.** Open the rear cover, and hold the **RESET** button for about 5 seconds until the screen turns off.

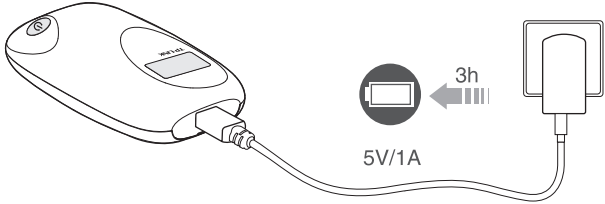
**Tip2.** Log into the web-management page, and go to **"Advanced->System Tools ->Restore Factory"**.

Note: Once the M5350 is restored, all the current configurations will be lost and you may need to reconfigure it.

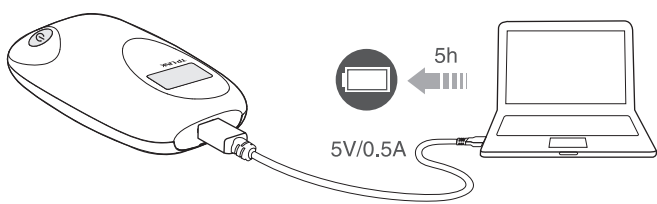
If your questions are not included here, please refer to our official website [www.tp-link.com](http://www.tp-link.com) for technical support.

# Charging Your M5350

Method 1 Via the Power Adapter



Method 2 Via Computer USB



\*Your M5350 has been fully charged when the lighting symbol ( ⚡ ) of battery icon disappeared.

## Power Saving Mode

For power saving, you may encounter the two situations below:

1. The screen will turn off automatically after 60 seconds.
2. The WiFi connection will turn off automatically if no WiFi devices connect to the M5350 for 15 minutes.

You can simply tap the power button to recover.  
Please refer to the User Guide to modify the Wi-Fi idle time setting.



## Screen Display



Network Type and Signal Strength	WiFi Status and User Numbers	0.00/s Download Speed
Internet Connection	Messages	0.00/s Upload Speed
Auto Connection Mode /  Manual Connection Mode	Battery Meter	0.00B Cumulative Traffic Usage

## Important Safety Information

- Keep the device away from water, fire, humidity or hot environments.
- Do not attempt to disassemble or modify the device.
- Do not use damaged power adapter or USB cables to charge the device.
- Do not use the device where wireless devices are not allowed.

\*Please follow the above instructions when operating the device. We cannot guarantee that no accidents or damage will take place due to improper use of the device. Please use with care and operate at your own risk.

## For More Information

For more information, please visit our website: <http://www.tp-link.com>

