

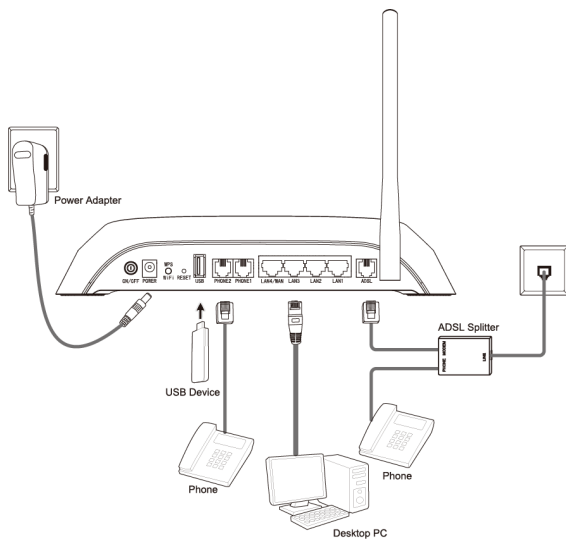
Installation

Note Please run the CD first, and the CD will guide you step by step to connect and configure the device. If there are troubles in running CD, please follow the instructions below.

1

Connecting the device

Note Please use only wired network connections to configure the Modem Router.



- 1 If you currently use a modem, disconnect it now - the Modem Router will replace your current modem.
- 2 Connect your computer to the port labeled "LAN 1~4" on the Modem Router with an Ethernet cable.
- 3 Connect the LINE port on the splitter to the wall jack using a telephone line. Then use the other telephone line to connect the MODEM port on the

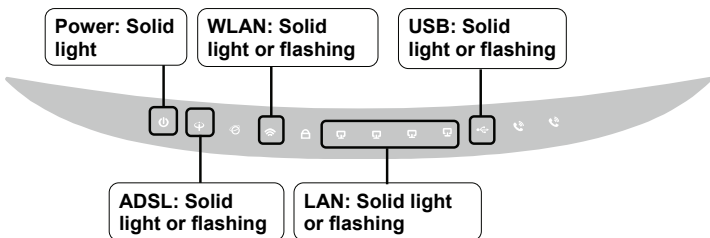
splitter to the ADSL port on the Modem Router, also have the PHONE port on the splitter connected to a telephone.

- 4** Connect your telephone to the port labeled "PHONE 1~2" on the Modem Router with a telephone line.
- 5** Connect your USB device to the USB port labeled "USB" on the Modem Router.

Note 1. If you want to share files or use the USB Voice Mail function, please plug an external USB hard drive/USB flash disk into the USB port. To use the printer function, please connect a USB printer to the USB port.

2. To use USB Voice Mail function, please make sure the free space of the plugged external USB hard drive/USB flash disk is more than 4MB.

- 6** Plug the provided Power Adapter into the Power jack on the back of the Modem Router and the other end to a standard electrical wall socket.
- 7** Switch on the ON/OFF button and power on all your other network devices. Then check to see if the LEDs of the Modem Router display normally as the diagram below describes.



Note If the LEDs display abnormally, please check to see if all the cable connectors (power adapter, phone line Ethernet cable and USB device) are well connected to your device. With the phone line well connected, if the ADSL LED turns off after flashing, please contact your ISP to ensure that your Internet connection is active.

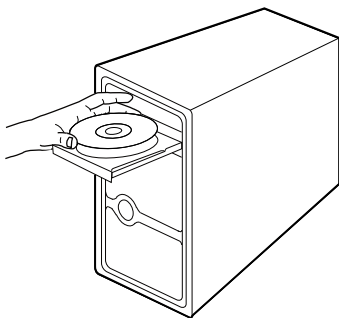
2

Configuring the device

Note To configure the device, TP-LINK strongly recommends that Windows users run the setup CD, but if you can not run the mini CD or your operating system is Mac OS/Linux/Android/iOS, please refer to **Appendix** to run the web-based Quick Setup Wizard.

Use the CD

- 1 Insert the provided Resource CD into your CD-ROM drive.



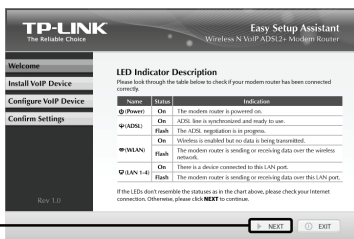
- 2 The Setup Wizard will automatically pop up on your computer's screen.

Please select your product model and click **Start Setup**



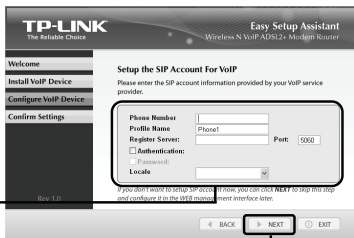
- 3 Then the configuration wizard will pop up and show you how to connect your devices. After that, the **Easy Setup Assistant** will start.

Click **NEXT**, and then follow the step-by-step instructions



- 4 When it comes to **Setup the SIP Account for VoIP**, you need to enter the SIP account information provided by your ISP.

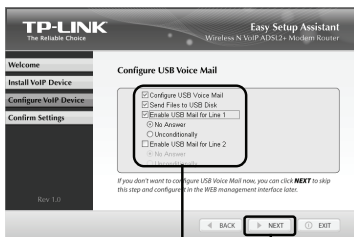
Please enter a **Profile Name** to identify this account and other parameters provided by your ISP



Click **NEXT**

- 5 Please make sure an external USB hard drive/USB flash disk has been plugged into the USB port on the Modem Router before running Setup Wizard. Otherwise, you may be unable to configure USB Voice Mail function on this page.

Check **Configure USB Voice Mail** and **Send Files to USB Disk**, enable USB Mail for Line 1 or Line 2



Click **NEXT**

Note The USB device can only be configured through the **Easy Setup Assistant**. After that, configure files necessary for USB Voice Mail function can be found in your USB disk. For advanced settings, please refer to *4.7.8 USB Voice Mail* on User Guide.

After the configuration has been completed, please skip to **Step 3 “Testing the Internet Connection”**.

3

Testing the Internet Connection

The basic settings for your Modem Router are completed. Please open the web browser and try to log on to some popular website to test your Internet connection, for example:

<http://www.tp-link.com>

<http://www.google.com>





If the above websites can be accessed, it indicates that your Modem Router has been configured successfully and you can start to enjoy the Internet. If the websites cannot be accessed, please refer to **“T4. What can I do if I cannot access the Internet?”** in the **Troubleshooting** guide.

Note For the advanced configurations, please refer to the User Guide on the Resource CD provided.

Note The above configurations only need to be set once. If you want other computers in your LAN to access the Internet, please connect the desired computer to the Modem Router directly. If the additional computer can not access the Internet, please set that computer referring to **“T3. What can I do if I cannot access the web-based configuration page?”** in the **Troubleshooting** guide.



Application Guide for USB Features

Local Storage Sharing	
<p>Local Storage Sharing allows you to share your USB drive or HDD with other computers, tablets or smart phones that are connected to the Modem Router. You can create multiple shares and control the permission by setting different accounts.</p> <p>Please refer to <i>4.8.3 Storage Sharing</i> on User Guide.</p>	
Remote Storage Sharing	
<p>Remote Storage Sharing turns your USB drive or HDD into a FTP server, which enables your access anywhere you have an Internet connection.</p> <p>Please refer to <i>4.8.4 FTP Server</i> on User Guide.</p>	
Media Server	
<p>Media Server let you play videos, photos and music stored on your USB drive or HDD on any DLNA supported TVs, Game Consoles or Media Players.</p> <p>Please refer to <i>4.8.5 Media Server</i> on User Guide.</p>	
Print Server	
<p>Print Server shares your printer to multiple computers which are connected to the Modem Router. No worry for the printer sharing any more.</p> <p>Please refer to <i>4.8.6 Print Server</i> on User Guide.</p>	

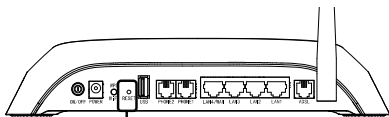
Note You can get the User Guide on Resource CD. Or log on to www.tp-link.com → select your region → search for the product → User Guide can be found under the “Download” tab on the product page.



Troubleshooting

T1. How do I restore my Modem Router's configuration to its factory default settings?

With the Modem Router powered on, use a pin to press and hold the **RESET** button on the back panel for 8 to 10 seconds before releasing it.



Press it for 8 to 10 seconds

Note Once the Modem Router is reset, the current configuration settings will be lost and you will need to re-configure the router.

T2. What can I do if I don't know or forget my password?

- 1) Restore the Modem Router's configuration to its factory default settings. If you don't know how to do that, please refer to **T1**.
- 2) Use the default user name and password: **admin, admin**.
- 3) Try to configure your Modem Router once again by following the instructions in the previous steps of the QIG.

T3. What can I do if I cannot access the web-based configuration page?

- 1) Configure your computer's IP Address.

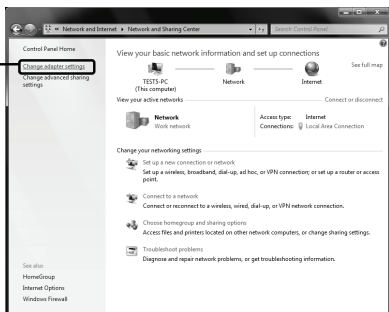
For Windows 7 OS

Go to **Start > Settings > Control Panel**, and then you will see the following page.

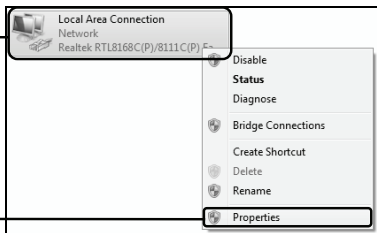
Click **View network status and tasks**



Click **Change adapter settings**

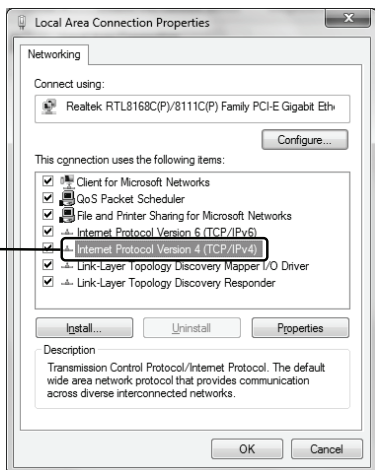


Right-click **Local Area Connection**



Click **Properties**

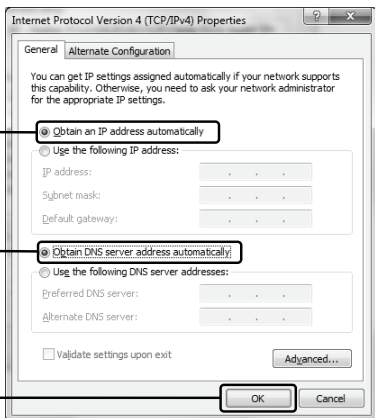
Double-click **Internet Protocol Version 4 (TCP/IPv4)**



Select **Obtain an IP address automatically**

Select **Obtain DNS server address automatically**

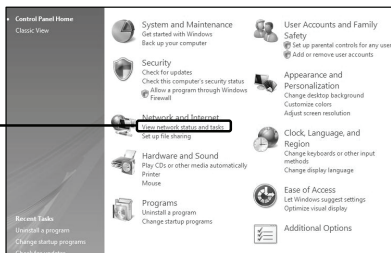
Click **OK**



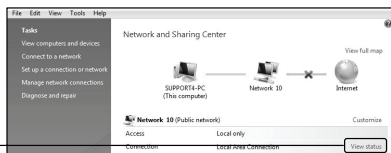
For Windows Vista OS

Go to **Start > Settings > Control Panel**, and then you will see the following page.

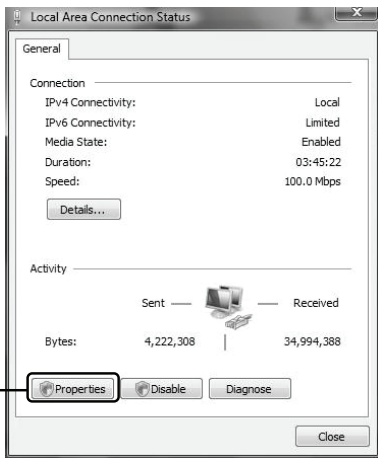
Click **View network status and tasks**



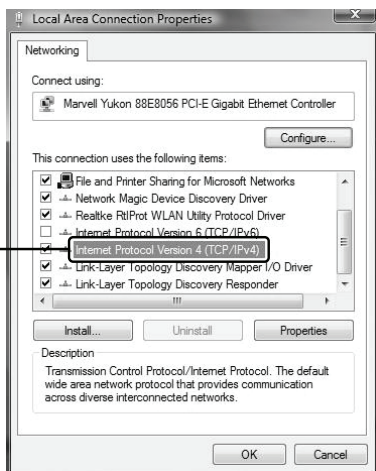
Click **View status**



Click **Properties**



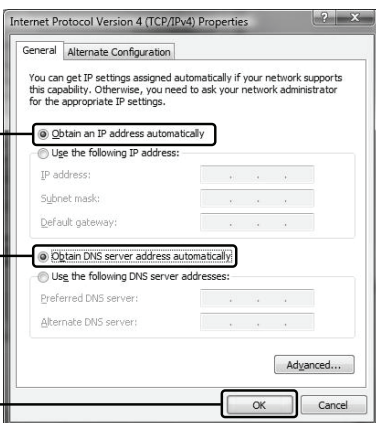
Double-click **Internet Protocol Version 4 (TCP/IPv4)**



Select **Obtain an IP address automatically**

Select **Obtain DNS server address automatically**

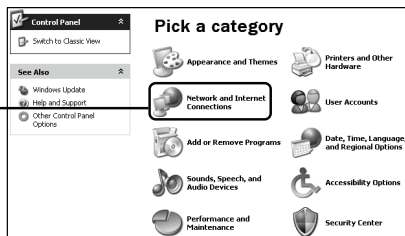
Click **OK**



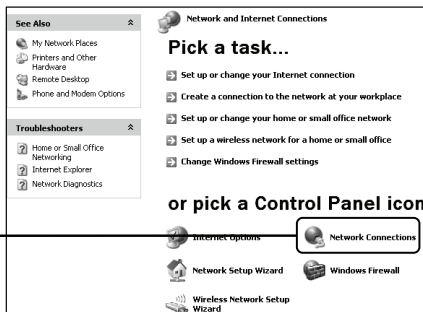
For Windows XP OS

Go to **Start > Control Panel**, you will then see the following page.

Click **Network and Internet Connections**

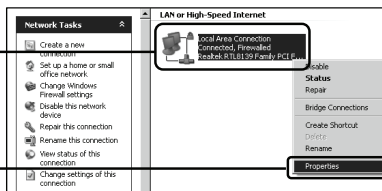


Click **Network Connections**

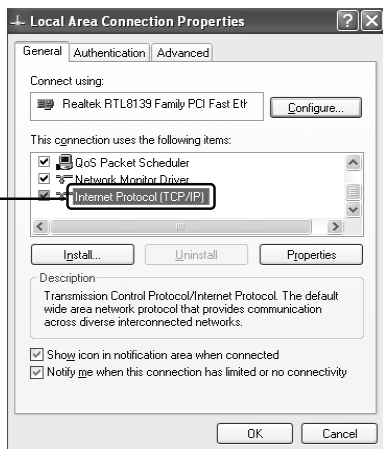


Right-click **Local Area Connection**

Click **Properties**



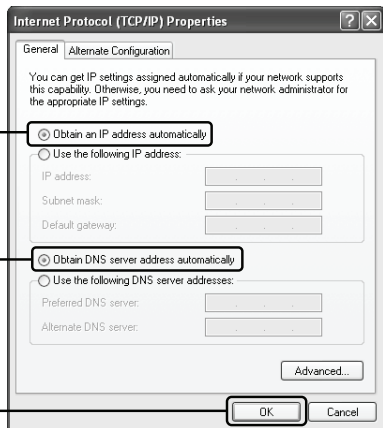
Double-click **Internet Protocol (TCP/IP)**

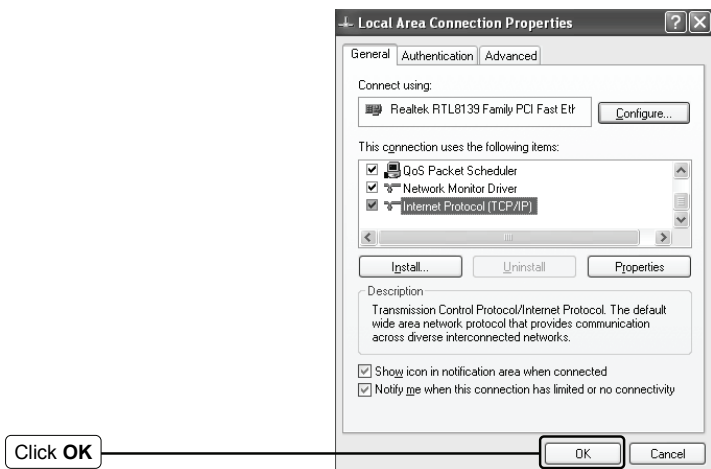


Select **Obtain an IP address automatically**

Select **Obtain DNS server address automatically**

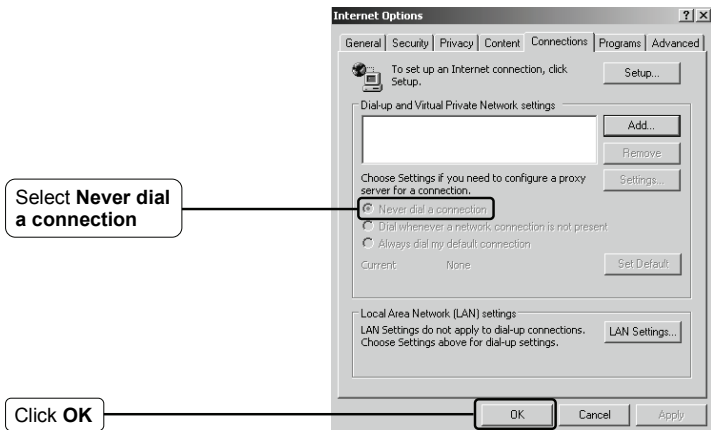
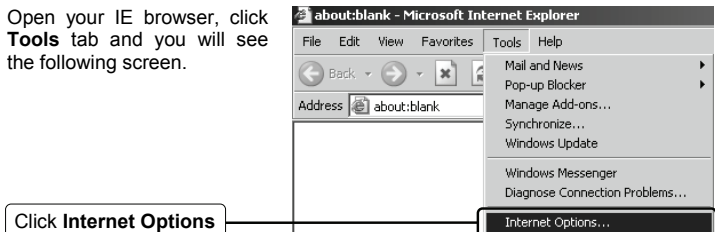
Click **OK**





2) Configure your IE browser.

Open your IE browser, click **Tools** tab and you will see the following screen.



Now, try to log on to the Web-based configuration page again after the above settings have been configured. If you still cannot access the configuration page, please restore your Modem Router's factory default settings and reconfigure your Modem Router following the instructions of this QIG. Please feel free to contact our Technical Support if the problem still exists.

T4. What can I do if I cannot access the Internet?

- 1) Check to see if all the connectors are connected well, including the telephone line, Ethernet cables and power adapter.
- 2) Check to see if you can log on to the web management page of the Modem Router. If you can, try the following steps. If you cannot, please set your computer referring to **T3** then try to see if you can access the Internet. If the problem still exists, please go to the next step.
- 3) Consult your ISP and make sure all the VPI/VCI, Connection Type, account username and password are correct. If there are any mistakes, please correct the settings and try again.
- 4) If you still cannot access the Internet, please restore your Modem Router to its factory default settings and reconfigure your Modem Router by following the instructions of this QIG.
- 5) Please feel free to contact our Technical Support if the problem still exists.

Note For more details about Troubleshooting and Technical Support contact information, please log on to our Technical Support Website:
<http://www.tp-link.com/en/support>

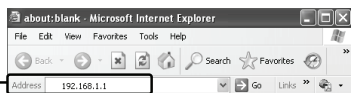


Appendix

Configuration for Mac OS/Linux/Windows/Android/iOS users who cannot run the mini CD

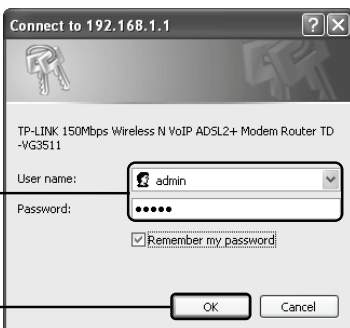
1 Login

Open your web browser and type **192.168.1.1** in the address bar and press **Enter**



A dialog box will prompt you for the **User name** and **Password**. Enter the default values and click **OK**.

User name: admin
Password: admin

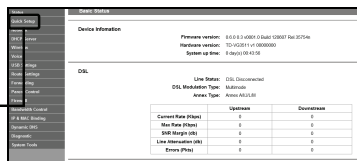


Click **OK**

Note If the dialog box does not pop up, please refer to **T3** in the **Troubleshooting** guide and **T2** will give you some help if you forget the password.

The web management page will display after a successful login.

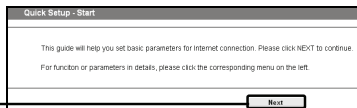
Click **Quick Setup**



2 Internet Parameters Configuration

This page will then display.

Click **Next**



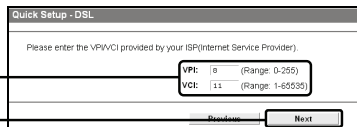
Quick Setup - Start

This guide will help you set basic parameters for Internet connection. Please click NEXT to continue. For function or parameters in details, please click the corresponding menu on the left.

Next

Enter the **VPI** and **VCI** values given by your ISP

Click **Next**



Quick Setup - DSL

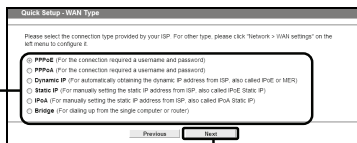
Please enter the VPI/VCI provided by your ISP (Internet Service Provider).

VPI: 0 (Range: 0-255)
VCI: 11 (Range: 1-65535)

Previous Next

Choose the **WAN Type** given by your ISP.
If **PPPoE/PPPoA** is selected, please proceed to **A**;
If **Dynamic IP** is selected, please skip to **B**;
If **Static IP/IPv6** is selected, please skip to **C**;
If **Bridge Mode** is selected, please skip to **D**.

Click **Next**



Quick Setup - WAN Type

Please select the connection type provided by your ISP. For other type, please click "Network > WAN settings" on the left menu to configure it.

☒ PPPoE (For the connection required a username and password)
☒ PPPoA (For the connection required a username and password)
☐ Dynamic IP (For automatically obtaining the dynamic IP address from ISP, also called IPv4 or DHCP)
☐ Static IP (For manually setting the static IP address from ISP, also called IPv4 Static IP)
☐ IPv6 (For manually setting the static IP address from ISP, also called IPv6 Static IP)
☐ Bridge (For dialing up from the single computer or router)

Previous Next

Note If you did not get the **VPI**, **VCI** and **WAN Type** information, please contact your ISP for this information.

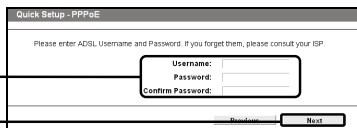
Note Bridge mode is not recommended because multiple computers are not permitted to share Internet access in this mode.

A. Configuration for PPPoE/PPPoA

This page will then display.

Enter the **Username** and **Password** provided by your ISP

Click **Next**



Quick Setup - PPPoE

Please enter ADSL Username and Password. If you forget them, please consult your ISP.

Username:
Password:
Confirm Password:

Previous Next

Note If you are using the modem on a new DSL line and have not completed your DSL provider's online registration, you may be using a generic username and password. When registration is completed, you will need to update the username and password if you have created a new one.

B. Configuration for Dynamic IP

This type doesn't need to be configured.

C. Configuration for Static IP/IPv6

This page will then display.

Enter the **Static IP** information provided by your ISP manually

Click **Next**

Quick Setup - Static IP

Please enter the basic parameters provided by your ISP. If you forget, please ask your ISP.

IP Address: 0.0.0.0
Subnet Mask: 0.0.0.0
Gateway: 0.0.0.0
DNS Server: 0.0.0.0 (Optional)
Secondary DNS Server: 0.0.0.0 (Optional)

Previous Next

D. Configuration for Bridge Mode

This type doesn't need to be configured.

After completing the above configuration, please proceed to **3 Wireless Settings Configuration**

3 Wireless Settings Configuration

This page will then display.

Keep the default setting: **Enable**. If you want to disable WIFI Function, please select **Disable**

Create a unique and easy-to-remember name for your wireless network. You can also keep default settings without the device being affected

Select a **Mode** type

Enter a Security Key

Click **Next**

Quick Setup - Wireless

Basic parameters of WLAN can be set on this page.

WLAN Function: ☒ Enable ☐ Disable

WLAN Mode: ☒ WIFI ☐ WDS

Channel: Auto

Security: ☒ WPA-PSK (WPA2-PSK) ☐ WPA-TKIP

☐ Disable Security

Previous Next

Note **Disable Security** is not recommended.

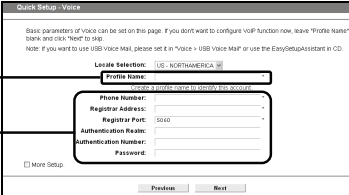
After completing the above configuration, please proceed to **4 Voice Settings Configuration**.

4 Voice Settings Configuration

This page will then display.

Enter a profile name to identify this account

Enter the **Voice** information provided by your ISP manually



Note For advanced settings, check the box before **More Setup**.


After completing the above configuration, please proceed to **5 Quick Setup Complete**.

5 Quick Setup Complete

Save page will be displayed. Please confirm all parameters. Click **Previous** to modify or click the **Save** button to make the configuration take effect.

To continue, the following page will be displayed.

Click **Finish**



Now, your Modem Router has been configured.

Technical Support

- For more troubleshooting help, go to:
<http://www.tp-link.com/en/support/faq>
- To download the latest Firmware, Driver, Utility and User Guide, go to:
<http://www.tp-link.com/en/support/download>
- For all other technical support, please contact us by using the following details:

Global

Tel: +86 755 26504400
E-mail: support@tp-link.com
Service time: 24hrs, 7 days a week

UK

Tel: +44 (0) 845 147 0017
E-mail: support.uk@tp-link.com
Service time: 24hrs, 7 days a week

Turkey

Tel: 444 19 25 (Turkish Service)
E-mail: support.tr@tp-link.com
Service time: 9:00 AM to 9:00 PM
7 days a week

Ukraine

Tel: 0-800-505-508
E-mail: support.ua@tp-link.com
Service time: Monday to Friday
14:00 PM to 22:00 PM

Brazil

Toll Free: 0800-770-4337 (Portuguese Service)
E-mail: suporte.br@tp-link.com
Service time: Monday to Saturday
08:00 AM to 08:00 PM

France

Tel: +33 (0) 820 800 860 (French service)
Email: support.fr@tp-link.com
Fee: 0.118 EUR/min from France
Service time: Monday to Friday 9:00 AM to 6:00 PM (Except French Bank holidays)

Russian Federation

Tel: 8 (499) 754-55-60
8 (800) 250-55-60 (toll-free call from any RF region)
E-mail: support.ru@tp-link.com
Service time: From 10:00 to 18:00 (Moscow time)
*Except weekends and holidays in Russian Federation

Switzerland

Tel: +41 (0) 848 800998 (German Service)
E-mail: support.ch@tp-link.com
Fee: 4-8 Rp/min, depending on rate of different time
Service time: Monday to Friday 9:00 AM to 6:00 PM. GMT+ 1 or GMT+ 2 (Daylight Saving Time)

Singapore

Tel: +65 62840493
E-mail: support.sg@tp-link.com
Service time: 24hrs, 7 days a week

USA / Canada

Toll Free: +1 866 225 8139
E-mail: support.usa@tp-link.com
Service time: 24hrs, 7 days a week

Australia / New Zealand

Tel: AU 1300 87 5465
NZ 0800 87 5465
E-mail: support.au@tp-link.com (Australia)
support.nz@tp-link.com (New Zealand)
Service time: 24hrs, 7 days a week

Italy

Tel: +39 0230519020
E-mail: support.it@tp-link.com
Service time: Monday to Friday
9:00 AM to 1:00 PM, 2:00 PM to 6:00 PM

Indonesia

Tel: (+62) 021 6259 135
E-mail: support.id@tp-link.com
Service time: Monday to Friday
9:00 -12:00; 13:00 -18:00
*Except public holidays

Malaysia

Tel: 1300 88 875465 (1300 88TPLINK)
Email: support.my@tp-link.com
Service time: 24hrs, 7 days a week

Poland

Tel: +48 (0) 801 080 618 / +48 22 7217563 (if calls from mobile phone)
E-mail: support.pl@tp-link.com
Service time: Monday to Friday
9:00 AM to 5:00 PM. GMT+1 or GMT+2 (Daylight Saving Time)

Germany / Austria

Tel: +49 1805 875465 (German Service)
+49 1805 TPLINK
E-mail: support.de@tp-link.com
Fee: 0.14 EUR/min from the German fixed phone network and up to 0.42 EUR/min from mobile phone
Service time: Monday to Friday 9:00 AM to 6:00 PM. GMT+ 1 or GMT+ 2 (Daylight Saving Time in Germany)
*Except bank holidays in Hesse