

Storage Sharing Application Guide

Contents

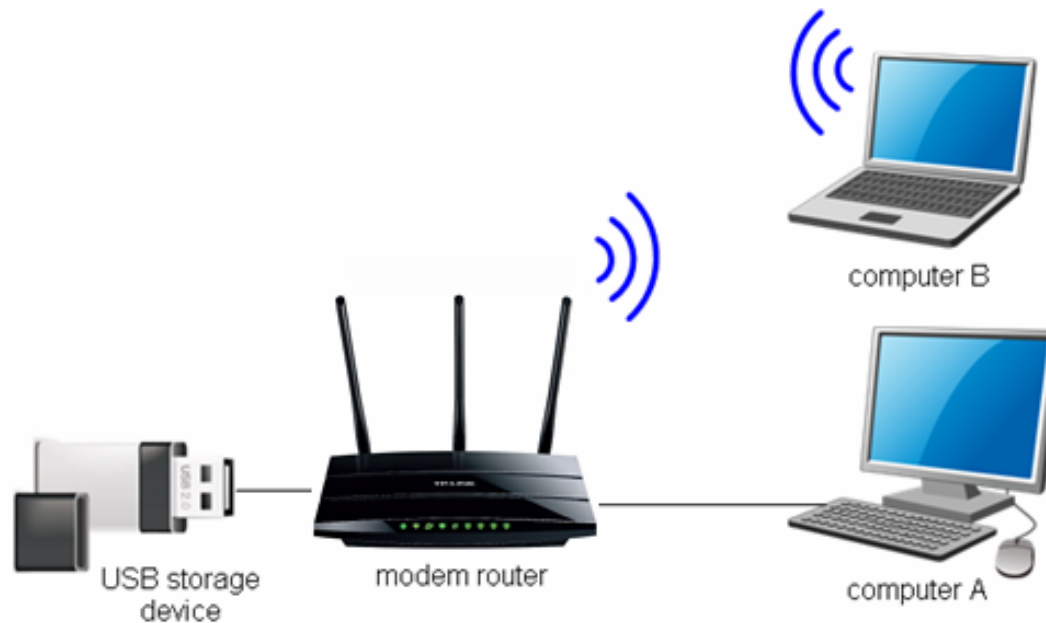
Overview	1
How to access shared folders	2
Extended Application	5
How to create a user account.....	5
How to add a shared folder	7
➤Set Access Authorization.....	11
➤Anonymous Access	13
Troubleshooting	14

Overview

The storage sharing feature allows you to share a USB storage device that's connected to the modem router, with other wired or wireless users in the same network.

Typical Topology

Here in this guide, we take the configuration procedures of TD-W8980 for example.



How to access shared folders

The modem router's Storage Sharing function is enabled by default, when the storage device is plugged into its USB port.

Please follow the steps to access the storage device.

- **For Windows Users:**


Windows XP:

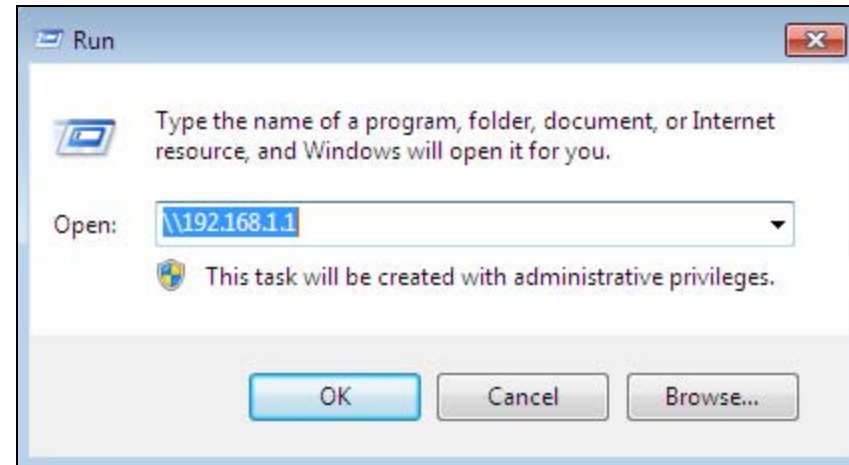
- Go to **Start -> Run**
- Input [\\192.168.1.1](#) in the dialog box
- Click **OK**

Windows Vista/7:

- Go to **Start**
- Type "run" in the search box
- Open the run application
- Input [\\192.168.1.1](#) in the dialog box
- Click **OK**

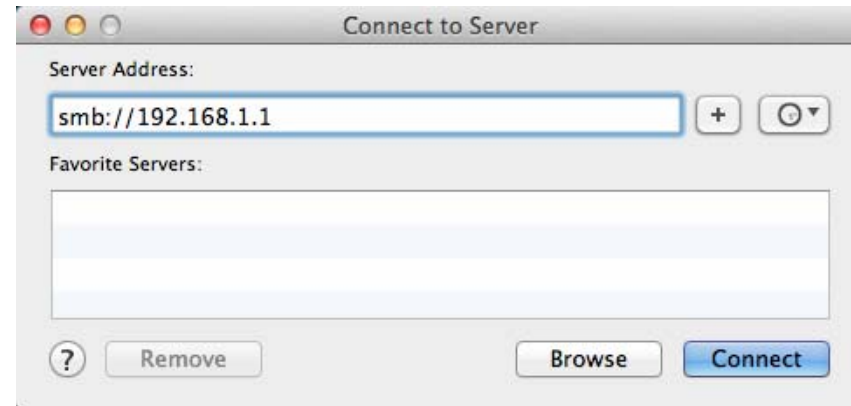
Windows 8:

- Move your mouse to the lower right corner and you will see **Search** icon  in the Popups. Click it and search **run**
- Open the run application
- Input [\\192.168.1.1](#) in the dialog box
- Click **OK**



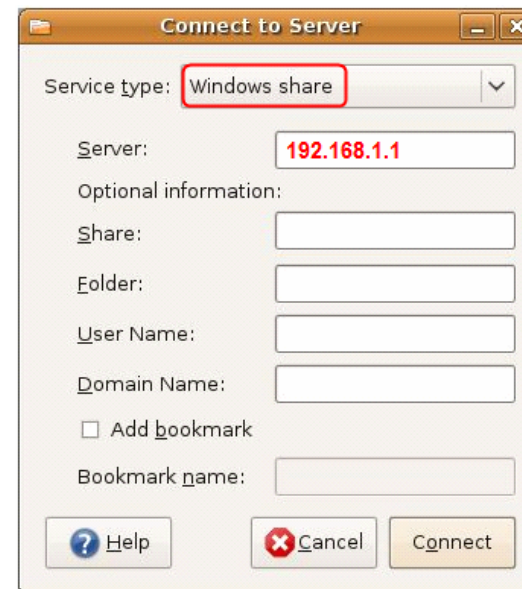
For Mac OS X Users:

- On the top tray, go to **Go -> Connect to Server**
- Input Server Address **smb://192.168.1.1**
- Click **Connect**



For Linux Users:

- On the top tray, go to **Places -> Connect to Server**
- Choose Service type **Windows share**
- Input Server **192.168.1.1**
- Click **Connect**



 **Note:**

- (1) Some USB storage devices may require using the external power.
- (2) To set up different accounts with their own access rights, please log into to the web-based management page and set it on USB Settings -> Storage Sharing and USB Settings -> User Accounts.

Now you have accessed the storage device, and you can read, edit, copy and delete the files in the storage device.

Extended Application

How to create a user account

Log onto the web-based management page, go to **USB Settings ->User Accounts** and follow the steps in the figure below.

User Accounts

This page allows you to configure user accounts for Storage Sharing/FTP Server. Please click Set button to make your configuration take effect.

Index	Username	Status	Action
1	admin*	Enabled	<input checked="" type="radio"/> Enable <input type="radio"/> Disable
2	user1	Enabled	<input checked="" type="radio"/> Enable <input type="radio"/> Disable Delete
3			
4			
5			

* : "Super User", It has full-access permission to all active volume(s) and shared folder(s).

1. Choose index from the drop-down list box

2. Enter the information

3. Click Set to make it take effect

After step 3, the entry will be shown in the table

 **Note:**

- (1) User name “admin*” is a “Super User” with full-access permission. Its action that could access all active volumes and shared folders is enabled by default.
- (2) The default user name/password of the Super User is admin/admin.
- (3) To delete an existing user account, please click **Delete** in the **Action** column of user account table.

How to add a shared folder

Log onto the web-based management page, go to **USB Settings** -> **Storage Sharing** and follow the steps in the figures below.

- Status
- Quick Setup
- Operation Mode
- Network
- DHCP Server
- Wireless
- USB Settings
- USB Mass Storage
- User Accounts
- Storage Sharing
- FTP Server
- Media Server
- Print Server
- Route Settings
- Forwarding
- Parent Control
- Firewall
- IPv6 Firewall
- IPv6 Tunnel
- Bandwidth Control
- IP & MAC Binding
- Dynamic DNS

Storage Sharing Settings

Storage Sharing allows you to share the files on the USB storage device with other computers locally.

Server Status: Enabled Disable

1. Tick the box to disable this function → Anonymous access to all the volumes

Folder Table: (Any changes of this table will not take effect until you Apply it.)

<input type="checkbox"/>	Share Name	Directory	User Access (F: Full-Access, R: Read-Only, N: No-Access)					Status	Edit
			1*	2	3	4	5		
<input type="checkbox"/>	volume	/	F	-	-	-	-	Enabled	Edit

*: "Super User". It has full-access permission (Read & Write) to all active volume(s) and share folder(s).

Add New Folder
Enable Selected
Disable Selected
Delete Selected

Apply

2. Click this button

Note:

1. Storage Sharing function is based on NetBIOS/SMB protocol which is supported by most Windows operating system and some other operating systems.
2. anonymous: All active volume(s) will be shared and authentication is not required.
3. You will be able to access the folders with the following methods:
 - For Windows OS:** Open "Run" window in the Start menu and enter \\(IP Address) or \\(IP Address)\(Share Name)
e.g. \\192.168.1.1 or \\192.168.1.1\photo;
 - For Mac OS:** Open "Connect to Server" window in the Go menu and enter smb://(IP Address) or smb://(IP Address)\(Share Name)
e.g. smb://192.168.1.1 or smb://192.168.1.1/photo.

Folder Browse

This page allow you to set a shared folder and access authorization for Storage Sharing service! It will not take effect when Anonymous access been enabled.

Share Name: **3. Type the Share Name in this field**

Directory: **4. Click Browse button**

User Access Control Table:

Index	User Name	Access Authorization
1*	admin	<input checked="" type="radio"/> Full-Access <input type="radio"/> Read-Only <input type="radio"/> No-Access
2		
3		
4		
5		

* : "Super User", It has full-access permission to all actived volume(s) and share folder(s).

Folder Browse

This page allows you to set a shared folder and access authorization for Storage Sharing service! It will not take effect when Anonymous access been enabled.

Share Name:

Directory:

Select Volume: Teclast (CoolFlash), sda1(1.1 GB,FAT32)
5. Choose the storage device from the drop-down list box

The name of folders in the storage device can be shown here →

 6. Click the directory of folders to be shared

User Access Control Table:

Index	Username	Access Authorization
1*	admin	<input checked="" type="radio"/> Full-Access <input type="radio"/> Read-Only <input type="radio"/> No-Access
2		
3		
4		
5		

* : "Super User". It has full-access permission (Read & Write) to all active volume(s) and share folder(s).

7. Click Apply to make it take effect

Status

Quick Setup

Operation Mode

Network

DHCP Server

Wireless

USB Settings

USB Mass Storage

User Accounts

Storage Sharing

FTP Server

Media Server

Print Server

Route Settings

Forwarding

Parent Control

Firewall

IPv6 Firewall

IPv6 Tunnel

Bandwidth Control

IP & MAC Binding

Dynamic DNS

Diagnostic

System Tools

Storage Sharing Settings

Storage Sharing allows you to share the files on the USB storage device with other computers locally.

Server Status: Enabled Disable

Anonymous access to all the volumes

Folder Table: (Any changes of this table will not take effect until you Apply it.)

	Share Name	Directory	User Access (F: Full-Access, R: Read-Only, N: No-Access)					Status	Edit
			1*	2	3	4	5		
<input type="checkbox"/>	volume	/	F	-	-	-	-	Enabled	Edit
<input type="checkbox"/>	tp-link	/tp-link	F	-	-	-	-	Enabled	Edit

*: "Super User". It has full-access permission (Read & Write) to all active volume(s) and share folder(s).

Note:

- Storage Sharing function is based on NetBIOS/SMB protocol which is supported by most Windows operating system and some other operating systems.
- anonymous: All active volume(s) will be shared and authentication is not required.
- You will be able to access the folders with the following methods:
 - For Windows OS:** Open "Run" window in the Start menu and enter \\(IP Address) or \\(IP Address)\(Share Name)
e.g. \\192.168.1.1 or \\192.168.1.1\photo;
 - For Mac OS:** Open "Connect to Server" window in the Go menu and enter smb://(IP Address) or smb://(IP Address)\(Share Name)
e.g. smb://192.168.1.1 or smb://192.168.1.1/photo.

➤ Set Access Authorization

There are three access authorization levels: full-access, read-only and no-access. The full-access user (i.e. super user) has full-access permission to add, delete and modify files in the storage device. The read-only user just has file-reading permission. And the no-access user is unable to access the storage device.

If you want to set access authorization for a user (eg. user1), please follow the steps illustrated in the figures below.

Status

Storage Sharing Settings

Storage Sharing allows you to share the files on the USB storage device with other computers locally.

Server Status: Enabled Disable

1. Tick the box to → disable this function Anonymous access to all the volumes

Folder Table: (Any changes of this table will not take effect until you Apply it.)

<input type="checkbox"/>	Share Name	Directory	User Access					Status	Edit
			(F: Full-Access, R: Read-Only, N: No-Access)						
			1*	2	3	4	5		
<input type="checkbox"/>	volume	/	F	-	-	-	-	Enabled	Edit

*: "Super User". It has full-access permission (Read & Write) to all active volume(s) and share folder(s).

2. Click Edit →

Add New Folder
Enable Selected
Disable Selected
Delete Selected

Apply

Note:

1. Storage Sharing function is based on NetBIOS/SMB protocol which is supported by most Windows operating system and some other operating systems.
2. anonymous: All active volume(s) will be shared and authentication is not required.
3. You will be able to access the folders with the following methods:
 - For Windows OS:** Open "Run" window in the Start menu and enter \\(IP Address) or \\(IP Address)\(Share Name)
e.g. \\192.168.1.1 or \\192.168.1.1\photo;
 - For Mac OS:** Open "Connect to Server" window in the Go menu and enter smb://(IP Address) or smb://(IP Address)\(Share Name)
e.g. smb://192.168.1.1 or smb://192.168.1.1/photo.

Folder Browse

This page allow you to set a shared folder and access authorization for Storage Sharing service! It will not take effect when Anonymous access been enabled.

Share Name:

Directory:

User Access Control Table:

Index	User Name	Access Authorization
1*	admin	<input checked="" type="radio"/> Full-Access <input type="radio"/> Read-Only <input type="radio"/> No-Access
2	user1	<input type="radio"/> Full-Access <input type="radio"/> Read-Only <input checked="" type="radio"/> No-Access
3	user2	<input type="radio"/> Full-Access <input type="radio"/> Read-Only <input checked="" type="radio"/> No-Access
4		
5		

* : "Super User", It has full-access permission to all actived volume(s) and share folder(s).

3. Here you can set access authorization for user1

4. Click Apply to save your settings

➤ Anonymous Access

If the shared files have no secrets for all users, then anonymous access can be enabled for convenience. After the anonymous access is enabled, all the users will be able to access the storage device without a user name and password.

Storage Sharing Settings

Storage Sharing allows you to share the files on the USB storage device with other computers locally.

Server Status: Enabled Disable

Tick this box to make anonymous access take effect → Anonymous access to all the volumes

Folder Table: (Any changes of this table will not take effect until you Apply it.)

	Share Name	Directory	User Access (F: Full-Access, R: Read-Only, N: No-Access)					Status	Edit
			1*	2	3	4	5		
<input type="checkbox"/>	volume	/	F	-	-	-	-	Enabled	Edit

*: "Super User". It has full-access permission (Read & Write) to all active volume(s) and share folder(s).

Note:

- Storage Sharing function is based on NetBIOS/SMB protocol which is supported by most Windows operating system and some other operating systems.
- anonymous: All active volume(s) will be shared and authentication is not required.
- You will be able to access the folders with the following methods:
 - For Windows OS:** Open "Run" window in the Start menu and enter \\(IP Address) or \\(IP Address)\(Share Name)
e.g. \\192.168.1.1 or \\192.168.1.1\photo;
 - For Mac OS:** Open "Connect to Server" window in the Go menu and enter smb://(IP Address) or smb://(IP Address)/(Share Name)
e.g. smb://192.168.1.1 or smb://192.168.1.1/photo.

Troubleshooting

1. What can I do if I do not find the storage device on the web-based management page?

Go to **USB Settings** -> **Storage Sharing**. Please click **Disable**, and then click **Enable**.

Storage Sharing Settings

Storage Sharing allows you to share the files on the USB storage device with other computers locally.

Server Status: Enabled

Anonymous access to all the volumes

Storage Sharing Settings

Storage Sharing allows you to share the files on the USB storage device with other computers locally.

Server Status: Disabled

Anonymous access to all the volumes

2. What can I do if I forget the password to access the storage device?

There are two ways to resolve this problem.

Method one:

Log onto the web-based management page, go to **USB Settings ->User Accounts** and follow the steps in the figure below.

User Accounts

This page allows you to configure user accounts for Storage Sharing/FTP Server. Please click Set button to make your configuration take effect.

Index	Username	Status	Action
1	admin*	Enabled	<input checked="" type="radio"/> Enable <input type="radio"/> Disable
2	user1	Enabled	<input checked="" type="radio"/> Enable <input type="radio"/> Disable Delete
3			
4			
5			

*: "Super User", It has full-access permission to all active volume(s) and shared folder(s).

Choose Index:

New Username:

New Password:

Confirm password:

1.Create a new password here

2.Click Set to save the settings

Method two:

Log onto the web-based management page, go to **USB Settings -> Storage Sharing**, and please tick the box according to the note in the following figure.

Status

Storage Sharing Settings

Storage Sharing allows you to share the files on the USB storage device with other computers locally.

Server Status: Enabled **Disable**

Tick this box to make anonymous access take effect → Anonymous access to all the volumes

Folder Table: (Any changes of this table will not take effect until you Apply it.)

<input type="checkbox"/>	Share Name	Directory	User Access (F: Full-Access, R: Read-Only, N: No-Access)					Status	Edit
			1*	2	3	4	5		
<input type="checkbox"/>	volume	/	F	-	-	-	-	Enabled	Edit

*: "Super User". It has full-access permission (Read & Write) to all active volume(s) and share folder(s).

Note:

1. Storage Sharing function is based on NetBIOS/SMB protocol which is supported by most Windows operating system and some other operating systems.
2. anonymous: All active volume(s) will be shared and authentication is not required.
3. You will be able to access the folders with the following methods:
 - For Windows OS:** Open "Run" window in the Start menu and enter \\(IP Address) or \\(IP Address)\(Share Name)
e.g. \\192.168.1.1 or \\192.168.1.1\photo;
 - For Mac OS:** Open "Connect to Server" window in the Go menu and enter smb://(IP Address) or smb://(IP Address)/(Share Name)
e.g. smb://192.168.1.1 or smb://192.168.1.1/photo.