

Storage Sharing Application Guide



TD-W8968



TD-W8970 / TD-W8970B



TD-W8980 / TD-W8980B

Contents

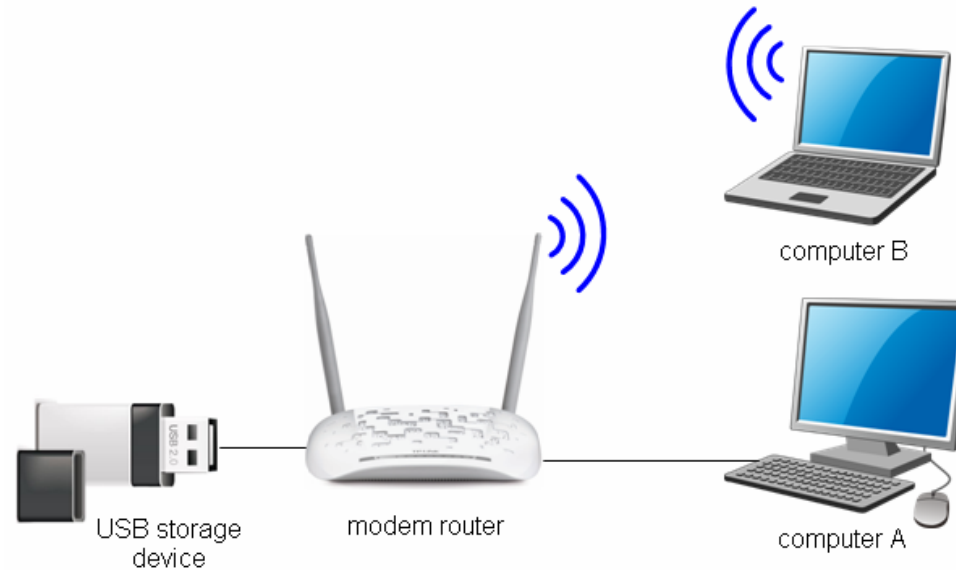
Overview	1
How to access shared folders.....	2
Extended Application	5
How to create a user account	5
How to add a shared folder	7
➤ Set Access Authorization.....	11
➤ Anonymous Access.....	13
Troubleshooting	14

Overview

The storage sharing feature allows you to share a USB storage device that's connected to the modem router, to other wired or wireless users in the same network.

Typical Topology

Here in this guide, we take the configuration procedures of TD-W8968 for example.



Before setting up the Storage Sharing function, make sure you have the following devices:

- ✓ Computer with Windows 2000/ XP/ Vista/ 7/ 8/ Mac OS X/ Linux
- ✓ USB storage devices with USB 2.0/3.0 port

How to access shared folders

The modem router's Storage Sharing function is enabled by default, when the storage device is plugged into its USB port.

Please follow the steps to access the storage device.

- **For Windows Users:**


Windows XP:

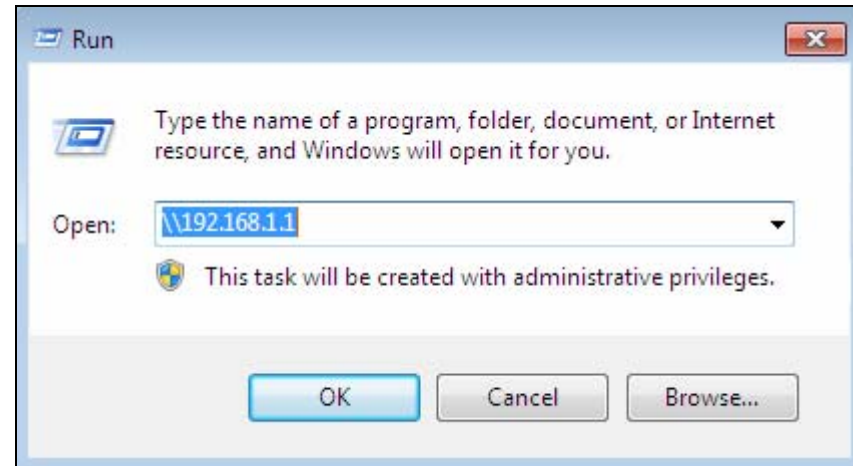
- Go to **Start -> Run**
- Input [\\192.168.1.1](#) in the dialog box
- Click **OK**

Windows Vista/7:

- Go to **Start**
- Type "run" in the search box
- Open the run application
- Input [\\192.168.1.1](#) in the dialog box
- Click **OK**

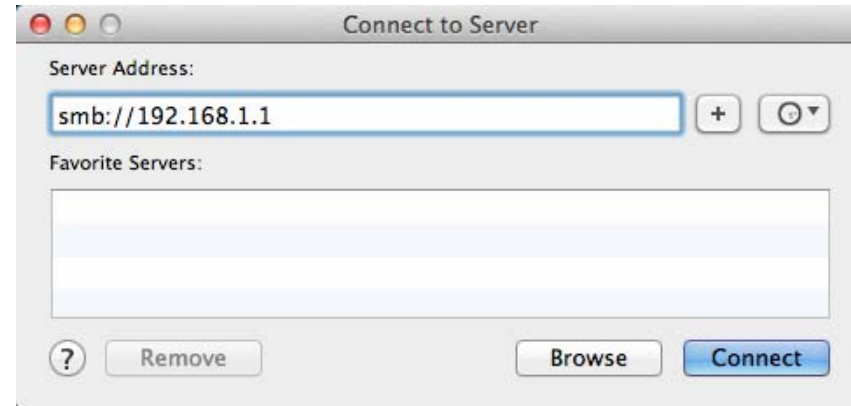
Windows 8:

- Move your mouse to the lower right corner and you will see **Search** icon  in the Popups. Click it and search **run**
- Open the run application
- Input [\\192.168.1.1](#) in the dialog box
- Click **OK**



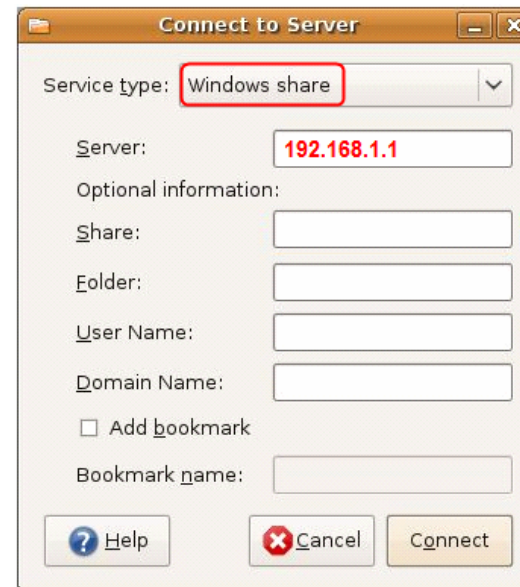
- **For Mac OS X Users:**

- On the top tray, go to **Go -> Connect to Server**
- Input Server Address **smb://192.168.1.1**
- Click **Connect**



- **For Linux Users:**

- On the top tray, go to **Places -> Connect to Server**
- Choose Service type **Windows share**
- Input Server **192.168.1.1**
- Click **Connect**



 **Note:**

- (1) Some USB storage devices may require using the external power.
- (2) To set up different accounts with their own access rights, please log into to the web-based management page and set it on USB Settings -> Storage Sharing and USB Settings -> User Accounts.

Now you have accessed the storage device, and you can read, edit, copy and delete the files in the storage device.

Extended Application

How to create a user account

Log onto the web-based management page, go to **USB Settings ->User Accounts** and follow the steps in the figure below.

User Accounts

This page allows you to control the user account for FTP\Samba Server. The "Super User" could access all active volumes and shared folders with full-access permission (Read & Write). Please click "Apply" button to apply your configuration.

Index	User Name	Status	Action
1	admin*	Enabled	<input checked="" type="radio"/> Enable <input type="radio"/> Disable
2	user1	Disabled	<input type="radio"/> Enable <input checked="" type="radio"/> Disable
3			
4			
5			

* : "Super User", It has full-access permission to all activated volume(s) and share folder(s).

After step 3, the entry will be shown in the table

1. Choose index from the drop-down list box

Choose Index:

2. Enter the information

New User Name:

New Password:

Confirm Password:

3. Click Set

(It will not take effect until you Apply it.)

4. Click Apply to make it take effect

 **Note:**

- (1) The status of the new user is disabled by default. You need to click Enable in the Action column of user account table to enable folders access.
- (2) User name “admin*” is a “Super User” with full-access permission. Its action that could access all active volumes and shared folders is enabled by default.
- (3) The default user name/password of the Super User is admin/admin.

How to add a shared folder

Log onto the web-based management page, go to **USB Settings -> Storage Sharing** and follow the steps in the figures below.

- Status
- Quick Setup
- Operation Mode
- Network
- DHCP Server
- Wireless
- USB Settings
- USB Mass Storage
- User Accounts
- Storage Sharing
- FTP Server
- Media Server
- Print Server
- Route Settings
- Forwarding
- Parent Control
- Firewall
- IPv6 Firewall
- IPv6 Tunnel
- Bandwidth Control
- IP & MAC Binding
- Dynamic DNS

Storage Sharing Settings

Storage Sharing allows you to share the files on the USB storage device with other computers locally.

Server Status: Enabled Disabled

1. Tick the box to disable this function → Anonymous access to all the volumes

Folder Table: (Any changes of this table will not take effect until you Apply it.)

	Share Name	Directory	User Access (F: Full-Access, R: Read-Only, N: No-Access)					Status	Edit
			1*	2	3	4	5		
<input type="checkbox"/>	volume	/	F	-	-	-	-	Enabled	Edit

*: "Super User". It has full-access permission (Read & Write) to all active volume(s) and share folder(s).

2. Click this button →

Note:

- Storage Sharing function is based on NetBIOS/SMB protocol which is supported by most Windows operating system and some other operating systems.
- anonymous: All active volume(s) will be shared and authentication is not required.
- You will be able to access the folders with the following methods:
 - For Windows OS:** Open "Run" window in the Start menu and enter \\(IP Address) or \\(IP Address)\(Share Name)
e.g. \\192.168.1.1 or \\192.168.1.1\photo;
 - For Mac OS:** Open "Connect to Server" window in the Go menu and enter smb://(IP Address) or smb://(IP Address)\(Share Name)
e.g. smb://192.168.1.1 or smb://192.168.1.1/photo.

Folder Browse

This page allow you to set a shared folder and access authorization for Storage Sharing service! It will not take effect when Anonymous access been enabled.

Share Name: **3. Type the Share Name in this field**

Directory: **4. Click Browse button**

User Access Control Table:

Index	User Name	Access Authorization
1*	admin	<input checked="" type="radio"/> Full-Access <input type="radio"/> Read-Only <input type="radio"/> No-Access
2		
3		
4		
5		

*: "Super User", It has full-access permission to all actived volume(s) and share folder(s).

Folder Browse

This page allow you to set a shared folder and access authorization for Storage Sharing service! It will not take effect when Anonymous access been enabled.

Share Name:

Directory:

The name of folders in the storage device can be shown here

Select Volume:

5. Choose the storage device from the drop-down list box

/sda1/
[tp-link](#)
[photo](#)

6. Click the directory of folder to be shared

User Access Control Table:

Index	User Name	Access Authorization
1*	admin	<input checked="" type="radio"/> Full-Access <input type="radio"/> Read-Only <input type="radio"/> No-Access
2		
3		
4		
5		

* : "Super User", It has full-access permission to all activated volume(s) and share folder(s).

Status
Storage Sharing Settings

Storage Sharing allows you to share the files on the USB storage device with other computers locally.

Server Status: Enabled Disable

Anonymous access to all the volumes

Folder Table: (Any changes of this table will not take effect until you Apply it.)

<input type="checkbox"/>	Share Name	Directory	User Access					Status	Edit
			(F:Full-Access, R:Read-Only, N:No-Access)						
			1*	2	3	4	5		
<input type="checkbox"/>	volume	/	F	-	-	-	-	Enabled	Edit
<input type="checkbox"/>	tp-link	/tp-link	F	-	-	-	-	Enabled	Edit

*: "Super User". It has full-access permission (Read & Write) to all active volume(s) and share folder(s).

Add New Folder
Enable Selected
Disable Selected
Delete Selected

Apply

Note:

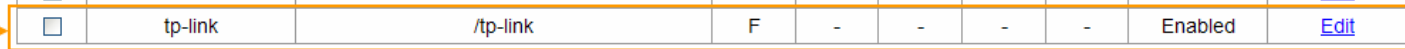
1. Storage Sharing function is based on NetBIOS/SMB protocol which is supported by most Windows operating system and some other operating systems.
2. anonymous: All active volume(s) will be shared and authentication is not required.
3. You will be able to access the folders with the following methods:

For Windows OS: Open "Run" window in the Start menu and enter \\(IP Address) or \\(IP Address)\(Share Name)
e.g. \\192.168.1.1 or \\192.168.1.1\photo;

For Mac OS: Open "Connect to Server" window in the Go menu and enter smb://(IP Address) or smb://(IP Address)\(Share Name)
e.g. smb://192.168.1.1 or smb://192.168.1.1/photo.

USB Settings
USB Mass Storage
 User Accounts
Storage Sharing
 FTP Server
 Media Server
 Print Server
 Route Settings
 Forwarding
 Parent Control
 Firewall
 IPv6 Firewall
 IPv6 Tunnel
 Bandwidth Control
 IP & MAC Binding
 Dynamic DNS
 Diagnostic
 System Tools

Add a new folder successfully



➤ Set Access Authorization

There are three access authorization levels: full-access, read-only and no-access. The full-access user (i.e. super user) has full-access permission to add, delete and modify files in the storage device. The read-only user just has file-reading permission. And the no-access user is unable to access the storage device.

If you want to set access authorization for a user (eg. user1), please follow the steps illustrated in the figures below.

Status
Storage Sharing Settings

Storage Sharing allows you to share the files on the USB storage device with other computers locally.

Server Status: Enabled Disable

1. Tick the box to disable this function → Anonymous access to all the volumes

Folder Table: (Any changes of this table will not take effect until you Apply it.)

☐	Share Name	Directory	User Access (F: Full-Access, R: Read-Only, N: No-Access)					Status	Edit
			1*	2	3	4	5		
☐	volume	/	F	-	-	-	-	Enabled	Edit

*: "Super User". It has full-access permission (Read & Write) to all active volume(s) and share folder(s).

Add New Folder
Enable Selected
Disable Selected
Delete Selected

Apply

Note:

1. Storage Sharing function is based on NetBIOS/SMB protocol which is supported by most Windows operating system and some other operating systems.
2. anonymous: All active volume(s) will be shared and authentication is not required.
3. You will be able to access the folders with the following methods:
 - For Windows OS:** Open "Run" window in the Start menu and enter \\(IP Address) or \\(IP Address)\(Share Name)
e.g. \\192.168.1.1 or \\192.168.1.1\photo;
 - For Mac OS:** Open "Connect to Server" window in the Go menu and enter smb://(IP Address) or smb://(IP Address)\(Share Name)
e.g. smb://192.168.1.1 or smb://192.168.1.1/photo.

USB Settings

USB Mass Storage

User Accounts

Storage Sharing

FTP Server

Media Server

Print Server

Route Settings

Forwarding

Parent Control

Firewall

IPv6 Firewall

IPv6 Tunnel

Bandwidth Control

IP & MAC Binding

Dynamic DNS

Diagnostic

System Tools

Folder Browse

This page allow you to set a shared folder and access authorization for Storage Sharing service! It will not take effect when Anonymous access been enabled.

Share Name:

Directory:

User Access Control Table:

Index	User Name	Access Authorization
1*	admin	<input checked="" type="radio"/> Full-Access <input type="radio"/> Read-Only <input type="radio"/> No-Access
2	user1	<input type="radio"/> Full-Access <input type="radio"/> Read-Only <input checked="" type="radio"/> No-Access
3	user2	<input type="radio"/> Full-Access <input type="radio"/> Read-Only <input checked="" type="radio"/> No-Access
4		
5		

*: "Super User", It has full-access permission to all actived volume(s) and share folder(s).

4. Click Apply to save your settings

3. Here you can set access authorization for user1

➤ Anonymous Access

If the shared files have no secrets for all users, then anonymous access can be enabled for convenience. After the anonymous access is enabled, all the users will be able to access the storage device without a user name and password.

Storage Sharing Settings

Storage Sharing allows you to share the files on the USB storage device with other computers locally.

Server Status: Enabled

Tick this box to make anonymous access take effect → Anonymous access to all the volumes

Folder Table: (Any changes of this table will not take effect until you Apply it.)

<input type="checkbox"/>	Share Name	Directory	User Access (F: Full-Access, R: Read-Only, N: No-Access)					Status	Edit
			1*	2	3	4	5		
<input type="checkbox"/>	volume	/	F	-	-	-	-	Enabled	Edit

*: "Super User". It has full-access permission (Read & Write) to all active volume(s) and share folder(s).

Note:

1. Storage Sharing function is based on NetBIOS/SMB protocol which is supported by most Windows operating system and some other operating systems.
2. anonymous: All active volume(s) will be shared and authentication is not required.
3. You will be able to access the folders with the following methods:
 - For Windows OS:** Open "Run" window in the Start menu and enter \\(IP Address) or \\(IP Address)\(Share Name)
e.g. \\192.168.1.1 or \\192.168.1.1\photo;
 - For Mac OS:** Open "Connect to Server" window in the Go menu and enter smb://(IP Address) or smb://(IP Address)/(Share Name)
e.g. smb://192.168.1.1 or smb://192.168.1.1/photo.

Troubleshooting

1. What can I do if I do not find the storage device on the web-based management page?

Go to **USB Settings** -> **Storage Sharing**. Please click **Disable**, and then click **Enable**.

Storage Sharing Settings

Storage Sharing allows you to share the files on the USB storage device with other computers locally.

Server Status: Enabled Disable

Anonymous access to all the volumes

Folder Table: (Any changes of this table will not take effect until you Apply it.)

<input type="checkbox"/>	Share Name	Directory	User Access (F: Full-Access, R: Read-Only, N: No-Access)					Status	Edit
			1*	2	3	4	5		
<input type="checkbox"/>	volume	/	F	-	-	-	-	Enabled	Edit

*: "Super User". It has full-access permission (Read & Write) to all active volume(s) and share folder(s).

Add New Folder
Enable Selected
Disable Selected
Delete Selected

Storage Sharing Settings

Storage Sharing allows you to share the files on the USB storage device with other computers locally.

Server Status: Disabled Enable

Anonymous access to all the volumes

Folder Table: (Any changes of this table will not take effect until you Apply it.)

<input type="checkbox"/>	Share Name	Directory	User Access (F: Full-Access, R: Read-Only, N: No-Access)					Status	Edit
			1*	2	3	4	5		
<input type="checkbox"/>	volume	/	F	-	-	-	-	Enabled	Edit

*: "Super User". It has full-access permission (Read & Write) to all active volume(s) and share folder(s).

Add New Folder
Enable Selected
Disable Selected
Delete Selected

2. What can I do if I forget the password to access the storage device?

There are two ways to resolve this problem.

Method one:

Log onto the web-based management page, go to **USB Settings ->User Accounts** and follow the steps in the figure below.

User Accounts

This page allows you to control the user account for FTP/Samba Server. The "Super User" could access all active volumes and shared folders with full-access permission (Read & Write). Please click "Apply" button to apply your configuration.

Index	User Name	Status	Action
1	admin*	Enabled	<input checked="" type="radio"/> Enable <input type="radio"/> Disable
2	user1	Disabled	<input checked="" type="radio"/> Enable <input type="radio"/> Disable
3			
4			
5			

* : "Super User", It has full-access permission to all activated volume(s) and share folder(s).

Choose Index:

New User Name:

New Password:

Confirm Password:

1. Create a new password here

2. Click Set (It will not take effect until you Apply it.)

3. Click Apply to save the settings

Method two:

Log onto the web-based management page, go to **USB Settings** -> **Storage Sharing**, please tick the box according to the note in the following figure.

Storage Sharing Settings

Storage Sharing allows you to share the files on the USB storage device with other computers locally.

Server Status: Enabled Disable

Tick this box to make anonymous access take effect → Anonymous access to all the volumes

Folder Table: (Any changes of this table will not take effect until you Apply it.)

<input type="checkbox"/>	Share Name	Directory	User Access (F: Full-Access, R: Read-Only, N: No-Access)					Status	Edit
			1*	2	3	4	5		
<input type="checkbox"/>	volume	/	F	-	-	-	-	Enabled	Edit

*: "Super User". It has full-access permission (Read & Write) to all active volume(s) and share folder(s).

Note:

1. Storage Sharing function is based on NetBIOS/SMB protocol which is supported by most Windows operating system and some other operating systems.
2. anonymous: All active volume(s) will be shared and authentication is not required.
3. You will be able to access the folders with the following methods:
 - For Windows OS:** Open "Run" window in the Start menu and enter \\(IP Address) or \\(IP Address)\(Share Name)
e.g. \\192.168.1.1 or \\192.168.1.1\photo;
 - For Mac OS:** Open "Connect to Server" window in the Go menu and enter smb://(IP Address) or smb://(IP Address)/(Share Name)
e.g. smb://192.168.1.1 or smb://192.168.1.1/photo.