

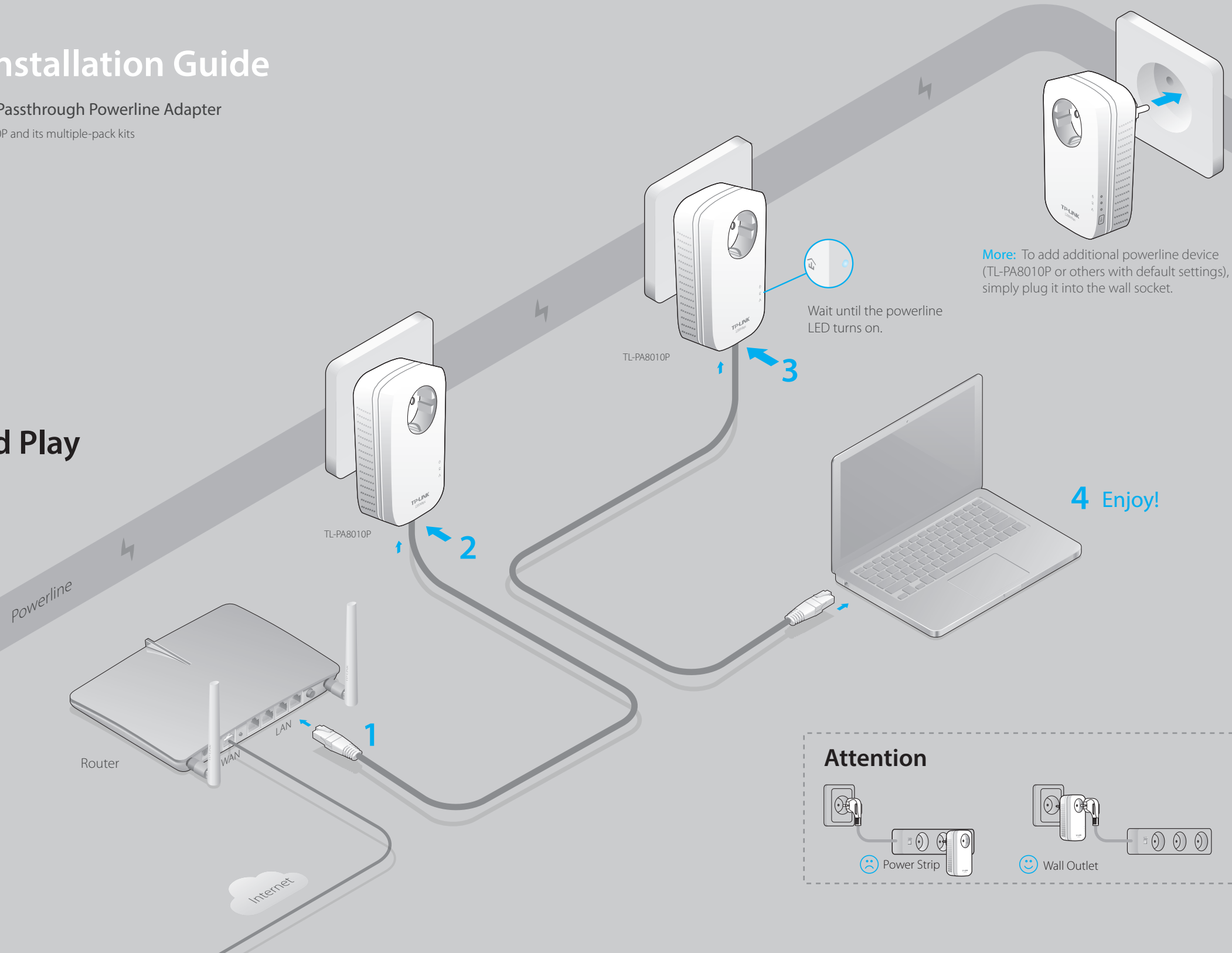
Quick Installation Guide

AV1200 Gigabit Passthrough Powerline Adapter

Applicable to TL-PA8010P and its multiple-pack kits

7106504965 REV1.0.0

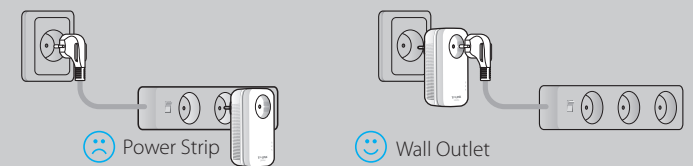
Plug and Play



Wait until the powerline LED turns on.

More: To add additional powerline device (TL-PA8010P or others with default settings), simply plug it into the wall socket.

Attention

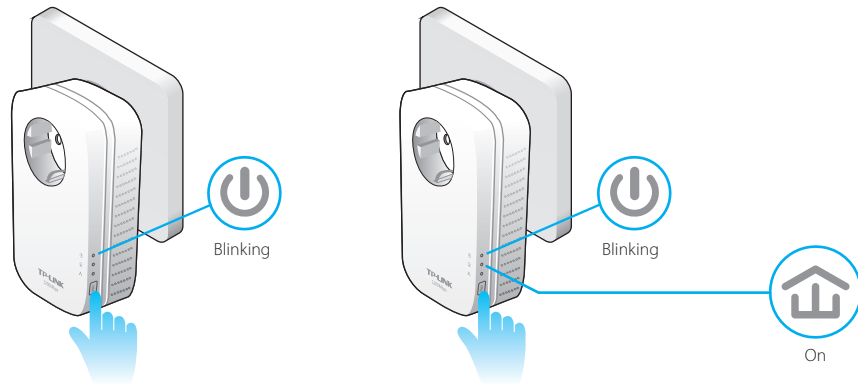


Set Up a Secure Powerline Network By Pairing (Optional)

Pairing is used to create or join a secure powerline network.

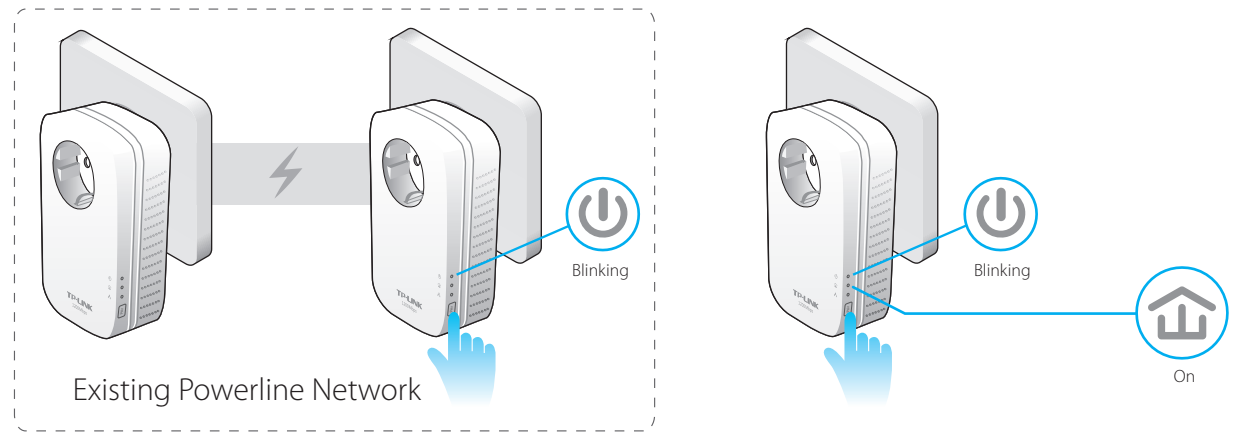
To create a secure powerline network:

- 1 Press the Pair button on one device.
- 2 Press the Pair button on another device.
- 3 Done.



To join an existing secure powerline network:

- 1 Press the Pair button of any powerline device in the existing powerline network.
- 2 Press the Pair button on the new device.
- 3 Done.



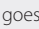
LED and Item Legend

LED	STATUS	DESCRIPTION
Power	On/Off	The powerline adapter is on or off.
	Blinking	Blinking every second: Pairing is in process.
		Blinking every 15 seconds: Power-Saving Mode is on.*
Powerline	Yellow-green	Powerline network is in good condition.
	Red	Powerline network is in poor condition. We recommend trying another wall socket.
	Off	The powerline adapter is not connected to any powerline network or is in Power-Saving Mode.
Ethernet	On/Off	The Ethernet port is connected or not connected.

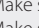
* Five minutes after the device connected to the powerline adapter is turned off, the powerline adapter will automatically switch to Power-Saving Mode.

FAQ (Frequently Asked Questions)

Q1. How do I reset my powerline adapter?

A1. With the powerline adapter connected to the electrical outlet, press and hold the Pair button for more than 15 seconds until the Power LED  goes off momentarily and comes back on.

Q2. What can I do if I don't have an Internet connection after I've completed the setup?

- A1. Make sure the modem or router has an Internet connection. Connect a computer directly to the modem or router to check.
 A2. Make sure the hardware connection is correct.
 A3. Make sure the Powerline LEDs  light up on all your powerline devices. If they do not, reset or pair all your powerline devices.
 A4. Make sure your computer's IP address is in the same segment as your router's.
 A5. Make sure all powerline devices are on the same electrical circuit.

Q3. What can I do if a successfully-paired powerline device does not work after it has been moved to a new location?

- A1. Make sure all powerline devices are on the same electrical circuit.
 A2. Try to pair them again according to "Set Up a Secure Powerline Network By Pairing".
 A3. If they still don't work, check for possible interference, such as washers, air conditioners or other household appliances that may be too close to one of the powerline devices. Plug them into the integrated electrical sockets to remove some electrical noise.



<http://www.tp-link.com/en/support/faq>

Scan the QR code to access the Technical Support page.

More advanced configurations, such as firmware upgrade and QoS configuration, can be accessed through the Powerline Utility. You can install the Powerline Utility from the resource CD (for Windows only) or download it from the TP-LINK official website (for Windows and Mac OS X).

ITEM	DESCRIPTION
Pair Button	Press and hold for 1 second to set up or join a secure powerline network.
	Press and hold for 8 seconds to leave an existing powerline network.
	Press and hold for more than 15 seconds to reset the powerline adapter.
Integrated Electrical Socket	Use as an electrical outlet expansion for power strip or household appliance. It can remove some electrical noise that might affect powerline performance.