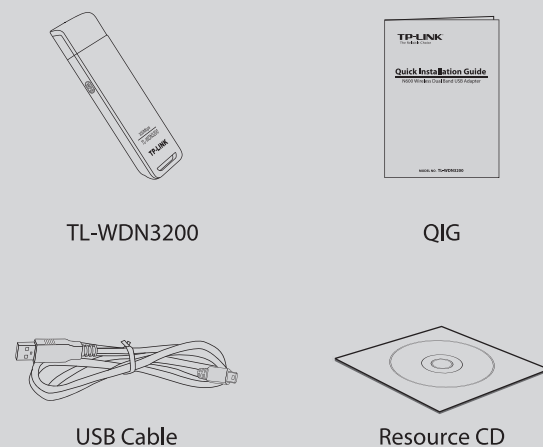


Quick Installation Guide

N600 Wireless Dual Band USB Adapter

MODEL NO. TL-WDN3200

Package Contents



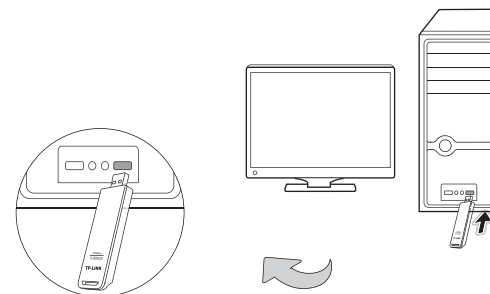
System Requirement

· Windows 8 · Windows 7 · Windows Vista · Windows XP

1 Hardware Connection

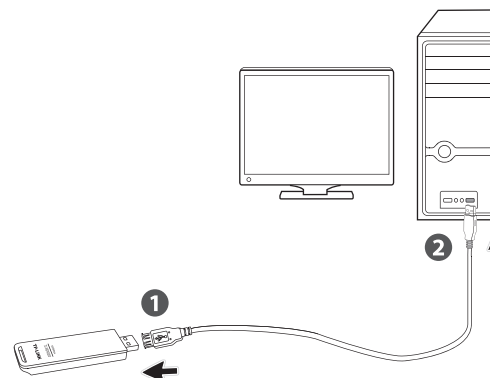
Method One

Plug the adapter into your computer's USB port directly.



Method Two

Connect the adapter and your computer with the provided USB cable.

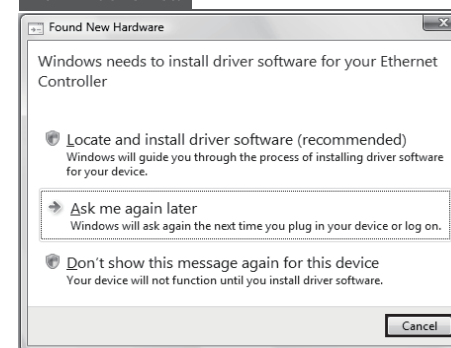


You may see the **Found New Hardware Wizard** (Found New Hardware) after the adapter has been inserted. Please click **Cancel**.

For Windows XP

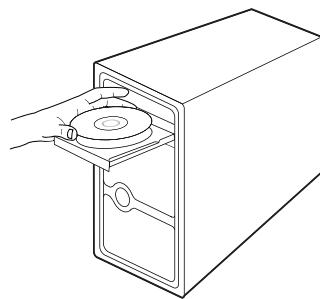


For Windows Vista



2 Software Installation (The installation procedures in Windows 8/7/ Vista/ XP are similar. Here we use Windows 7 as an example.)

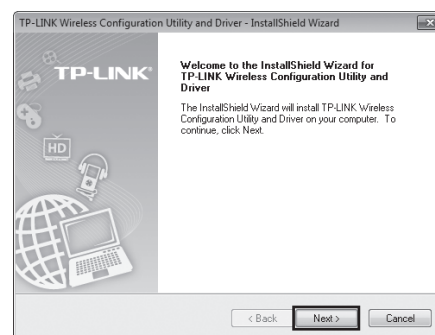
- 1 Insert the TP-LINK Resource CD into the CD-ROM drive.



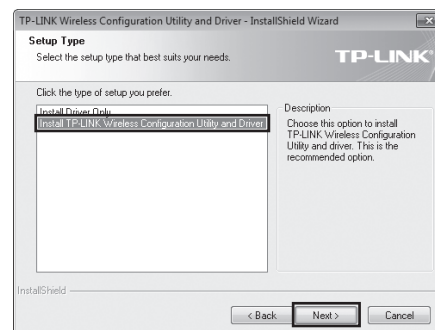
- 2 Select **Install Driver&Utility** from the drop-down list.



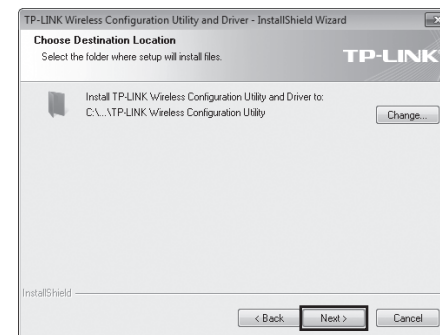
- 3 The **InstallShield Wizard** window will appear. Click **Next** to continue.



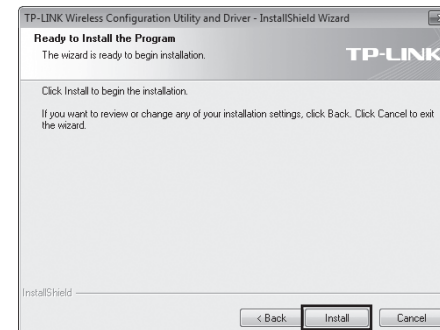
- 4 Select **Install TP-LINK Wireless Configuration Utility and Driver** and then click **Next**.



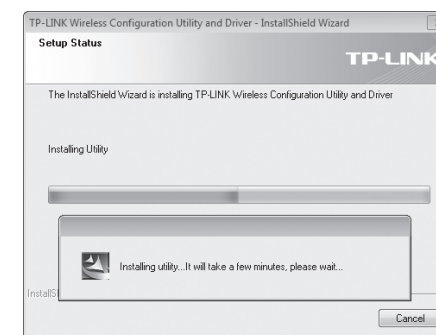
- 5 Click **Change** to specify the destination location or you can leave it default. Click **Next** to continue.



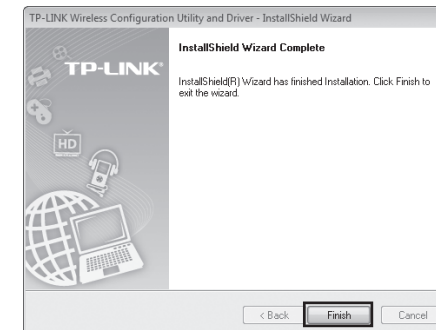
- 6 Click **Install** to install the driver and utility for your adapter.



- 7 The drivers and utility will install. This may take 1~2 minutes.



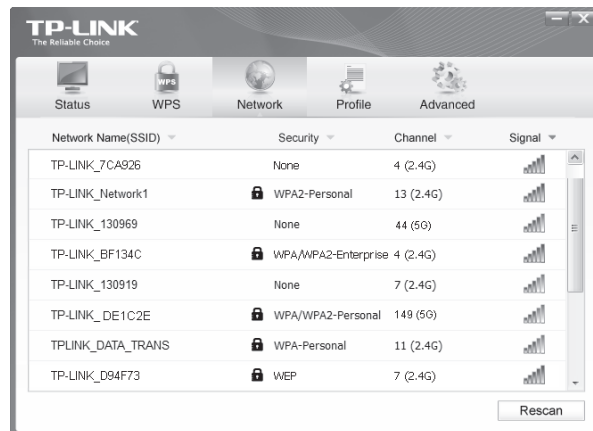
- 8 The following screen will then appear. Click **Finish** to complete the setup.



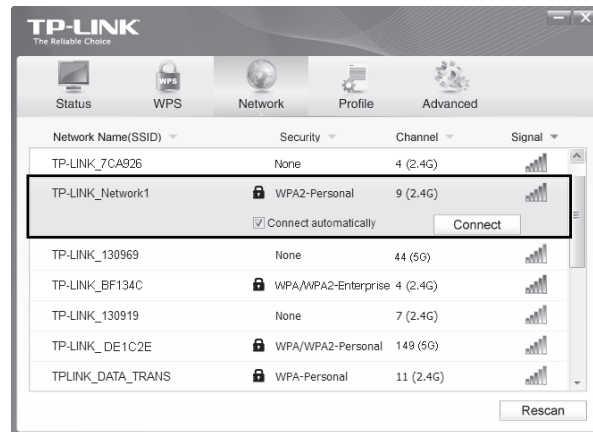
3 Connect to network

(You can skip to **Appendix: Connect to Wireless Router by WPS** to quickly connect to a network if your router or access point features WPS/ QSS function.)

- 1 After installation, the configuration page will pop up on your desktop.



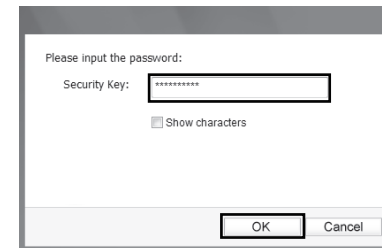
- 2 Clicking **Network** in the tools section will display a list of available wireless networks. Select the target network name (e.g. TP-LINK_Network1) and then click **Connect** to build a connection.



- 3 If the network is unsecured, you will directly connect to it. If it is security-enabled, there are two ways to connect to it.

Method One:

Input the security key into the field beside **Security Key** and click **OK** to continue.

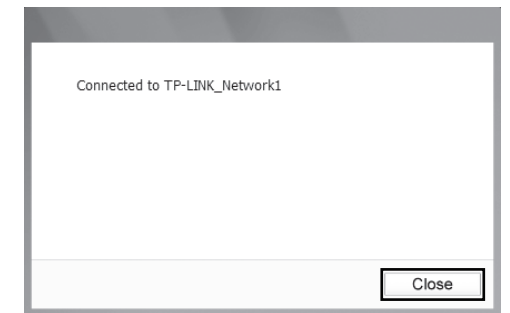


Method Two:

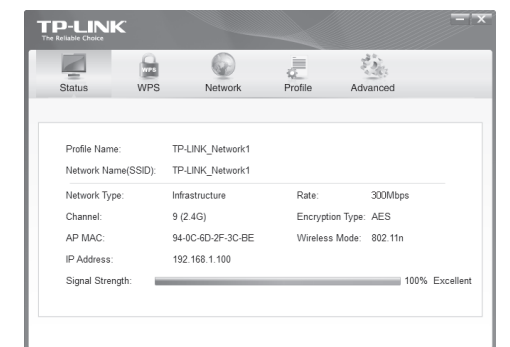
Without entering a key, push the WPS/ QSS button on your router if prompted to **You can also connect by pushing the button on the router** as shown below. Then click **OK** to continue.




- 4 The following screen indicates successful connectivity. Click **Close** to enjoy the Internet.



- 5 To view more information about the network connected, click **Status** in the tools section.

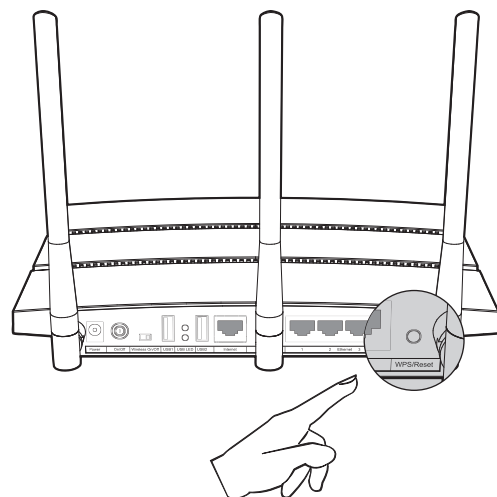


Note The icon  will appear on your desktop. Double-clicking on the icon can also start the utility.

Appendix: Connect to Wireless Router by WPS

If your wireless router features the WPS/ QSS function, you can also set up a wireless connection in this way.

- 1 Push the WPS button on the back/front panel of the Router. Here we use Router TL-WDR4300 as an example. Push the **WPS/Reset** button for 2~3 seconds.



- 2 Make sure the adapter has been plugged into the computer. Then press and hold the WPS button on the adapter for 2~3 seconds until Figure 2 appears.

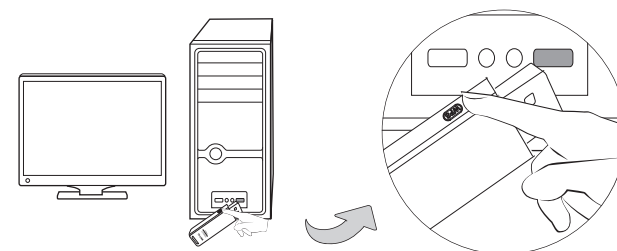


Figure 1

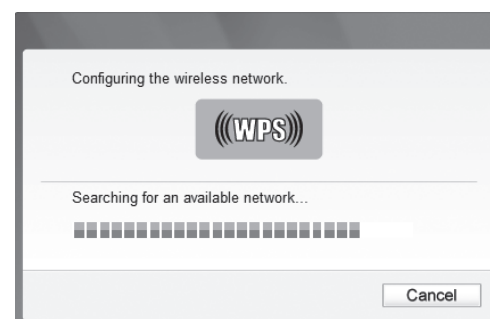
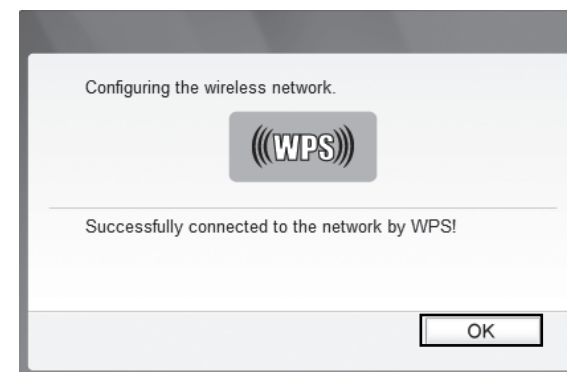


Figure 2

- 3 Please wait until the connection progress is completed. The following screen indicates successful connectivity. Click **OK** to finish the WPS connection.



Note For detailed instructions of WPS, please refer to the User Guide on the Resource CD.

Technical Support

- For more troubleshooting help, go to www.tp-link.com/en/support/faq
- To download the latest Firmware, Driver, Utility and User Guide, go to <http://www.tp-link.com/en/support/download/>
- For all other technical support, please contact us by using the following details:

Global

Tel: +86 755 2650 4400
Fee: Depending on rate of different carriers, IDD.
E-mail: support@tp-link.com
Service time: 24hrs, 7 days a week

Singapore

Tel: +65 6284 0493
Fee: Landline: 1p-10.5p/min, depending on the time of day. Mobile: 15p-40p/min, depending on your mobile network.
E-mail: support.sg@tp-link.com
Service time: 24hrs, 7 days a week

UK

Tel: +44 (0) 845 147 0017
Fee: Landline: 1p-10.5p/min, depending on the time of day. Mobile: 15p-40p/min, depending on your mobile network.
E-mail: support.uk@tp-link.com
Service time: 24hrs, 7 days a week

USA/ Canada

Toll Free: 1 866 225 8139
E-mail: support.usa@tp-link.com
Service time: 24hrs, 7 days a week

Malaysia

Toll Free: 1300 88 875 465 (1300 88TP-LINK)
E-mail: support.my@tp-link.com
Service time: 24hrs, 7 days a week

Ukraine

Tel: 0 800 505 508
Fee: Free for Landline; Mobile: Depending on rate of different carriers
E-mail: support.ua@tp-link.com
Service time: Monday to Friday, 09:00 to 13:00; 14:00 to 18:00

Germany / Austria

Tel: +49 1805 875465 (German Service)
E-mail: support.de@tp-link.com
Service time: Monday to Friday, 09:00 to 12:30 and 13:30 to 17:30. GMT+1 or GMT+2 (DST in Germany)

Landline from Austria: 0.20EUR/min.
E-mail: support.de@tp-link.com
Service time: Monday to Friday, 09:00 to 12:30 and 13:30 to 17:30. GMT+1 or GMT+2 (DST in Germany)

Landline from Germany: 0.14EUR/min.
E-mail: support.de@tp-link.com
Service time: Monday to Friday, 09:00 to 12:30 and 13:30 to 17:30. GMT+1 or GMT+2 (DST in Germany)

Landline from Austria: 0.20EUR/min.
E-mail: support.de@tp-link.com
Service time: Monday to Friday, 09:00 to 12:30 and 13:30 to 17:30. GMT+1 or GMT+2 (DST in Germany)

Australia / New Zealand

Tel: AU 1300 87 5465 (Depending on 1300 policy). NZ 0800 87 5465 (Toll Free)
E-mail: support.au@tp-link.com (Australia)
support.nz@tp-link.com (New Zealand)
Service time: 24hrs, 7 days a week

Turkey

Tel: 0850 72 444 88 (Turkish Service)
Fee: Depending on rate of different carriers.
E-mail: support.tr@tp-link.com
Service time: 9:00 to 21:00, 7 days a week

Switzerland

Tel: +41 (0) 848 800 998 (German Service)
E-mail: support.ch@tp-link.com
Fee: 4-8 Rp/min, depending on rate of different time
Service time: Monday to Friday, 09:00 to 12:30 and 13:30 to 17:30. GMT+ 1 or GMT+ 2 (DST)

Brazil

Toll Free: 0800 608 9799 (Portuguese Service)
E-mail: suporte.br@tp-link.com
Service time: Monday to Friday, 9:00 to 20:00; Saturday, 9:00 to 15:00

Poland

Tel: +48 (0) 801 080 618
Fee: Depending on rate of different carriers.
E-mail: support.pl@tp-link.com
Service time: Monday to Friday, 9:00 to 17:00 GMT+1 or GMT+2 (DST)

France

Tel: 0820 800 860 (French service)
E-mail: support.fr@tp-link.com
Fee: 0.118 EUR/min from France
Service time: Monday to Friday, 9:00 to 18:00 *Except French Bank holidays

Indonesia

Tel: (+62) 021 6386 1936
Fee: Depending on rate of different carriers.
E-mail: support.id@tp-link.com
Service time: Monday to Friday 9:00 to 18:00 *Except public holidays

Russian Federation

Tel: 8 (499) 754 5560 (Moscow NO.)
8 (800) 250 5560 (Toll-free within RF)
E-mail: support.ru@tp-link.com
Service time: From 10:00 to 18:00 (Moscow time)

* Except weekends and holidays in RF