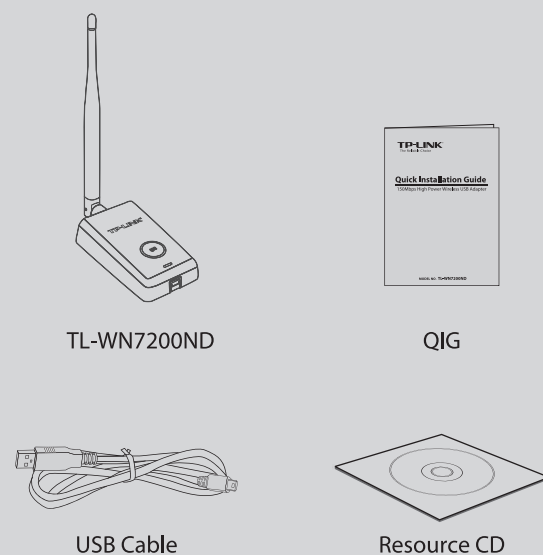


## Quick Installation Guide

150Mbps High Power Wireless USB Adapter

MODEL NO. TL-WDN7200ND

## Package Contents

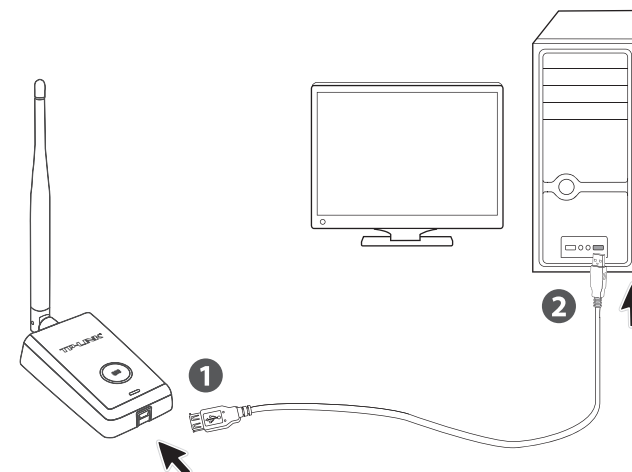


## System Requirement

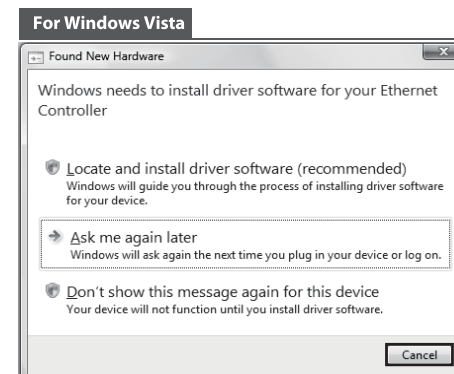
· Windows 8 · Windows 7 · Windows Vista · Windows XP

## 1 Hardware Connection

Connect the adapter and your computer with the provided USB cable.

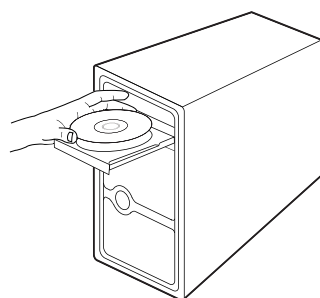


You may see the **Found New Hardware Wizard** (Found New Hardware) after the adapter has been inserted. Please click **Cancel**.



## 2 Software Installation (The installation procedures in Windows 8/ 7/ Vista/ XP are similar. Here we use Windows 7 as an example.)

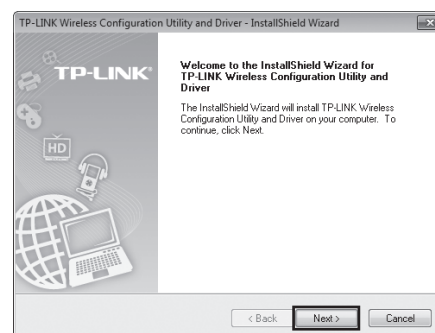
- 1 Insert the TP-LINK Resource CD into the CD-ROM drive.



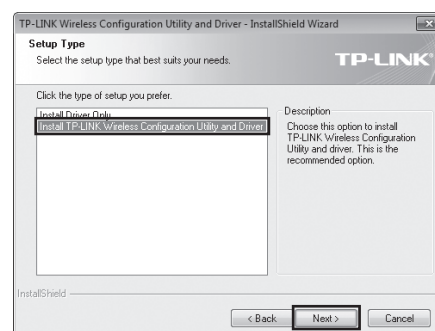
- 2 Select **Install Driver&Utility** from the drop-down list.



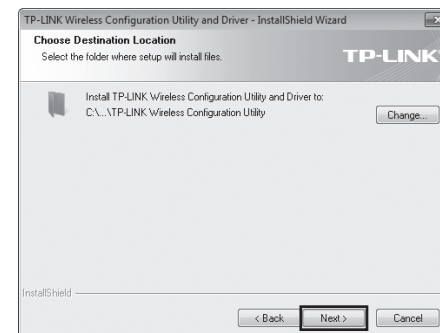
- 3 The **InstallShield Wizard** window will appear. Click **Next** to continue.



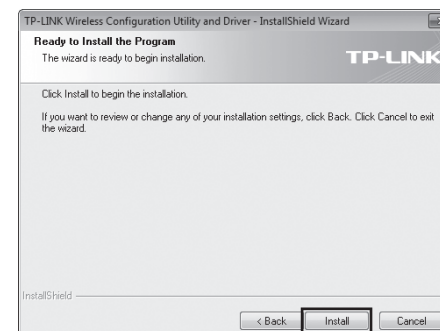
- 4 Select **Install TP-LINK Wireless Configuration Utility and Driver** and then click **Next**.



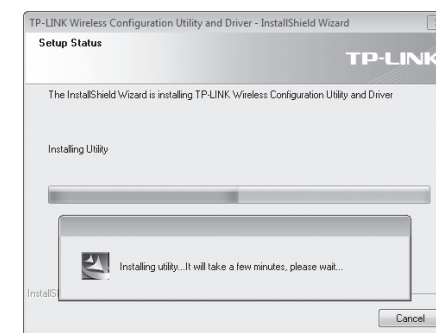
- 5 Click **Change** to specify the destination location or you can leave it default. Click **Next** to continue.



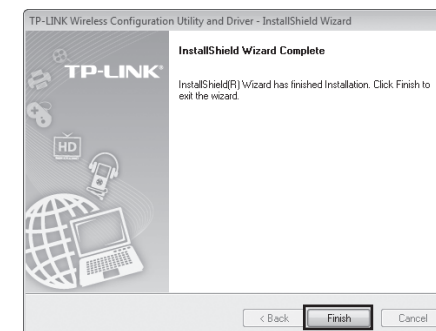
- 6 Click **Install** to install the driver and utility for your adapter.



- 7 The drivers and utility will install. This may take 1~2 minutes.



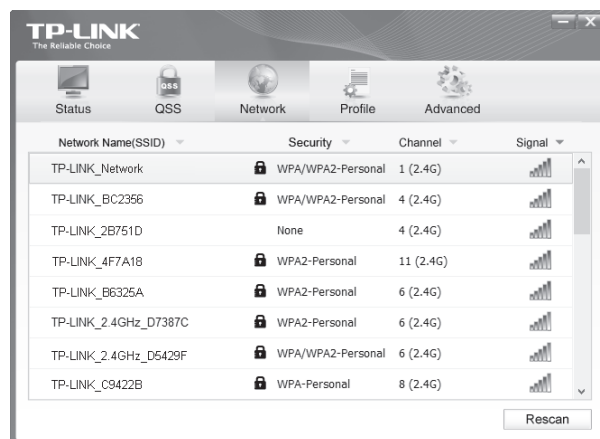
- 8 The following screen will then appear. Click **Finish** to complete the setup.



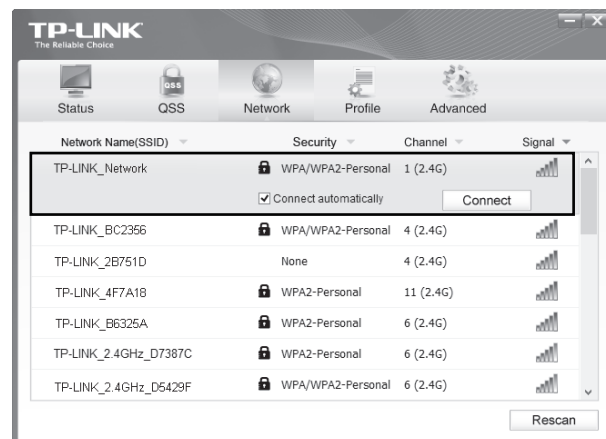
# 3 Connect to network

(You can skip to **Appendix: Connect to Wireless Router by QSS/ WPS** to quickly connect to a network if your router or access point features QSS/ WPS function.)

- 1 After installation, the configuration page will pop up on your desktop.



- 2 Clicking **Network** in the tools section will display a list of available wireless networks. Select the target network name (e.g. TP-LINK\_Network) and then click **Connect** to build a connection.



- 3 If the network is unsecured, you will directly connect to it. If it is security-enabled, there are two ways to connect to it.

## Method One:

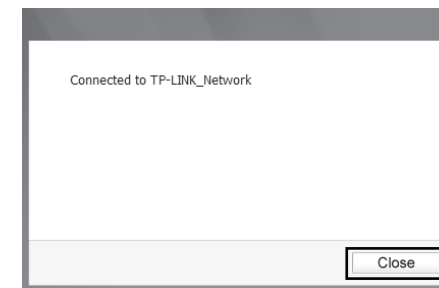
Input the security key into the field beside **Security Key** and click **OK** to continue.

## Method Two:

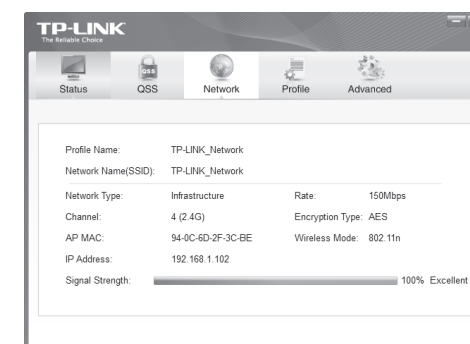
Without entering a key, push the QSS/ WPS button on your router if prompted to **You can also connect by pushing the button on the router** as shown below. Then click **OK** to continue.





- 4 The following screen indicates successful connectivity. Click **Close** to enjoy the Internet.



- 5 To view more information about the network connected, click **Status** in the tools section.

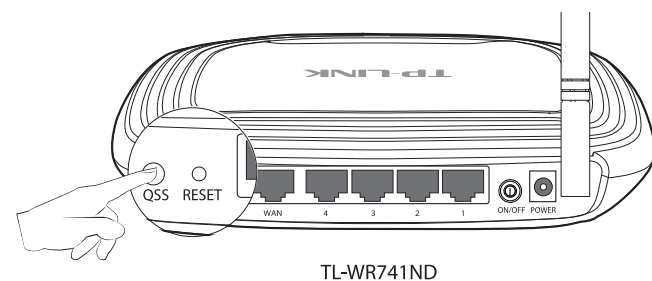


 The icon  will appear on your desktop. Double-clicking on the icon can also start the utility.

## Appendix: Connect to Wireless Router by QSS/ WPS

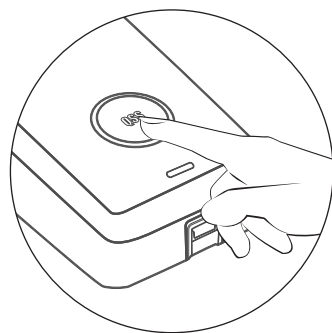
If your wireless router features the QSS/ WPS function, you can also set up a wireless connection in this way.

- 1 Push the QSS/ WPS button on the back/front panel of the Router. Here we take Router TL-WR741ND for example.

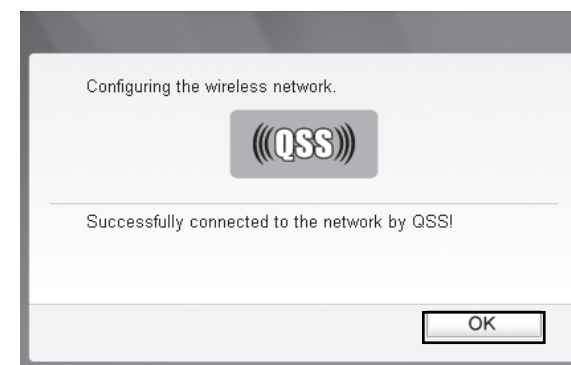



TL-WR741ND

- 2 Make sure the adapter has been plugged into the computer. Then press and hold the QSS button on the adapter for 2~3 seconds until Figure 2 appears.



- 3 Please wait until the connection progress is completed. The following screen indicates successful connectivity. Click **OK** to finish the QSS connection.



 For detailed instructions of QSS/ WPS, please refer to the User Guide on the Resource CD.

## Technical Support

- For more troubleshooting help, go to [www.tp-link.com/en/support/faq](http://www.tp-link.com/en/support/faq)
- To download the latest Firmware, Driver, Utility and User Guide, go to <http://www.tp-link.com/en/support/download/>
- For all other technical support, please contact us by using the following details:

### Global

**Tel:** +86 755 2650 4400  
**Fee:** Depending on rate of different carriers, IDD.  
**E-mail:** support@tp-link.com  
**Service time:** 24hrs, 7 days a week

### Singapore

**Tel:** +65 6284 0493  
**Fee:** Landline: 1p-10.5p/min, depending on the time of day. Mobile: 15p-40p/min, depending on your mobile network.  
**E-mail:** support.sg@tp-link.com  
**Service time:** 24hrs, 7 days a week

### UK

**Tel:** +44 (0) 845 147 0017  
**Fee:** Landline: 1p-10.5p/min, depending on the time of day. Mobile: 15p-40p/min, depending on your mobile network.  
**E-mail:** support.uk@tp-link.com  
**Service time:** 24hrs, 7days a week

### USA/ Canada

**Toll Free:** +1 866 225 8139  
**E-mail:** support.usa@tp-link.com (USA)  
support.ca@tp-link.com (Canada)  
**Service time:** 24hrs, 7days a week

### Malaysia

**Toll Free:** 1300 88 875 465 (1300 88TP-LINK)  
**E-mail:** support.my@tp-link.com  
**Service time:** 24hrs, 7days a week

### Ukraine

**Tel:** 0 800 505 508  
**Fee:** Free for Landline; Mobile: Depending on rate of different carriers  
**E-mail:** support.ua@tp-link.com  
**Service time:** Monday to Friday 10:00 to 22:00

### Italy

**Tel:** +39 023 051 9020  
**Fee:** Depending on rate of different carriers.  
**E-mail:** support.it@tp-link.com  
**Service time:** Monday to Friday, 09:00 to 13:00; 14:00 to 18:00

### Germany / Austria

**Tel:** +49 1805 875465 (German Service)  
+49 1805 TPLINK  
+43 820 820360  
**Fee:** Landline from Germany: 0.14EUR/min. Landline from Austria: 0.20EUR/min.

**E-mail:** support.de@tp-link.com  
**Service Time:** Monday to Friday, 09:00 to 12:30 and 13:30 to 18:00. GMT+1 or GMT+2 (DST in Germany)  
\* Except bank holidays in Hesse

### Australia / New Zealand

**Tel:** AU 1300 87 5465 (Depending on 1300 policy). NZ 0800 87 5465 (Toll Free)  
**E-mail:** support.au@tp-link.com (Australia)  
support.nz@tp-link.com (New Zealand)  
**Service time:** 24hrs, 7 days a week

### Turkey

**Tel:** 0850 72 444 88 (Turkish Service)  
**Fee:** Depending on rate of different carriers.  
**E-mail:** support.tr@tp-link.com  
**Service time:** 9:00 to 21:00, 7days a week

### Switzerland

**Tel:** +41 (0) 848 800 998 (German Service)  
**E-mail:** support.ch@tp-link.com  
**Fee:** 4-8 Rp/min, depending on rate of different time  
**Service time:** Monday to Friday, 09:00 to 12:30 and 13:30 to 18:00. GMT+1 or GMT+2 (DST)

### Brazil

**Toll Free:** 0800 608 9799 (Portuguese Service)  
**E-mail:** suporte.br@tp-link.com  
**Service time:** Monday to Friday, 9:00 to 20:00; Saturday, 9:00 to 15:00

### Poland

**Tel:** +48 (0) 801 080 618  
+48 223 606 363 (if calls from mobile phone)  
**Fee:** Depending on rate of different carriers.  
**E-mail:** support.pl@tp-link.com  
**Service time:** Monday to Friday 9:00 to 17:00 GMT+1 or GMT+2 (DST)

### France

**Tel:** 0820 800 860 (French service)  
**Email:** support.fr@tp-link.com  
**Fee:** 0.118 EUR/min from France  
**Service time:** Monday to Friday, 9:00 to 18:00 \*Except French Bank holidays

### Indonesia

**Tel:** (+62) 021 6386 1936  
**Fee:** Depending on rate of different carriers.  
**E-mail:** support.id@tp-link.com  
**Service time:** Sunday to Friday, 09:00 to 12:00, 13:00 to 18:00 \*Except public holidays

### Russian Federation

**Tel:** 8 (499) 754 5560 (Moscow NO.)  
8 (800) 250 5560 (Toll-free within RF)  
**E-mail:** support.ru@tp-link.com  
**Service time:** From 10:00 to 18:00 (Moscow time)  
\* Except weekends and holidays in RF