



# TP-LINK<sup>®</sup>

## User Guide

### TL-WN620G User Guide

### 108M Wireless USB Adapter



## **COPYRIGHT & TRADEMARKS**

Specifications are subject to change without notice. **TP-LINK®** is a registered trademark of TP-LINK TECHNOLOGIES CO., LTD. Other brands and product names are trademarks or registered trademarks of their respective holders.

No part of the specifications may be reproduced in any form or by any means or used to make any derivative such as translation, transformation, or adaptation without permission from TP-LINK TECHNOLOGIES CO., LTD. Copyright © 2008 TP-LINK TECHNOLOGIES CO., LTD.

All rights reserved.

<http://www.tp-link.com>

## FCC STATEMENT



This equipment has been tested and found to comply with the limits for a Class B digital device, pursuant to part 15 of the FCC Rules. These limits are designed to provide reasonable protection against harmful interference in a residential installation. This equipment generates, uses and can radiate radio frequency energy and, if not installed and used in accordance with the instructions, may cause harmful interference to radio communications. However, there is no guarantee that interference will not occur in a particular installation. If this equipment does cause harmful interference to radio or television reception, which can be determined by turning the equipment off and on, the user is encouraged to try to correct the interference by one or more of the following measures:

- Reorient or relocate the receiving antenna.
- Increase the separation between the equipment and receiver.
- Connect the equipment into an outlet on a circuit different from that to which the receiver is connected.
- Consult the dealer or an experienced radio/ TV technician for help.

This device complies with part 15 of the FCC Rules. Operation is subject to the following two conditions:

- 1) This device may not cause harmful interference.
- 2) This device must accept any interference received, including interference that may cause undesired operation.

Any changes or modifications not expressly approved by the party responsible for compliance could void the user's authority to operate the equipment.

### **FCC Radiation Exposure Statement:**

This device has been tested for compliance with FCC RF Exposure limits in the typical laptop computer configuration and this device can be used in desktop or laptop computers with side mounted PCMCIA slots. This device cannot be used with handheld PDAs (personal digital assistants). This device and its antenna must not be co-located or operated in conjunction with any other antenna or transmitter.

## CE Mark Warning

# C E0678 ⚠

This is a class B product. In a domestic environment, this product may cause radio interference, in which case the user may be required to take adequate measures.

## National Restrictions

### 2400.0-2483.5 MHz

Country	Restriction	Reason/remark
Bulgaria		General authorization required for outdoor use and public service
France	Outdoor use limited to 10 mW e.i.r.p. within the band 2454-2483.5 MHz	Military Radiolocation use. Refarming of the 2.4 GHz band has been ongoing in recent years to allow current relaxed regulation. Full implementation planned 2012
Italy		If used outside of own premises, general authorization is required
Luxembourg	None	General authorization required for network and service supply(not for spectrum)
Norway	Implemented	This subsection does not apply for the geographical area within a radius of 20 km from the centre of Ny-Ålesund
Russian Federation		Only for indoor applications

#### **Note:**

It not used outdoors in France.





## DECLARATION OF CONFORMITY

For the following equipment:

Product Description: **108M Wireless USB Adapter**

Model No.: **TL-WN620G**

Trademark: **TP-LINK**

We declare under our own responsibility that the above products satisfy all the technical regulations applicable to the product within the scope of Council Directives:

Directives 1999/5/EC

The above product is in conformity with the following standards or other normative documents

**ETSI EN 300 328 V1.6.1: 2004**

**ETSI EN 301 489-17 V1.2.1: 2002**

**EN 61000-3-2:2000**

**EN 61000-3-3:1995+A1:2001**

**EN60950-1:2001**

Person is responsible for marking this declaration:

*For and on behalf of*  
TP-LINK TECHNOLOGIES CO.,LTD.

**Zhao Jian Jun**.....  
*Authorized Signature(s)*

**Director of International Business**

Date of Issue: **24-3-2007**

**TP-LINK TECHNOLOGIES CO., LTD.**

**ADD: Building 7, Second Part, Honghualing Industrial Zone,**

**Xili town, Nanshan District, Shenzhen, China**

**Website: [www.tp-link.com](http://www.tp-link.com)**





## Package Contents

The following contents should be found in your package:

- One TL-WN620G Wireless USB Adapter
- One USB Extension Cable
- Quick Installation Guide
- One TL-WN620G Wireless Adapter Resource CD, including:
  - TL-WN620G Wireless Client Utility and Drivers
  - User Guide
  - Other Helpful Information

 **Note:**

Make sure that the package contains the above items. If any of the listed items are damaged or missing, please contact with your distributor.

# CONTENTS

<b>Chapter 1</b>	<b>Introduction .....</b>	<b>1</b>
1.1	Product Overview .....	1
1.2	Main Features .....	1
1.3	Overview the User Guide .....	2
1.4	Conventions .....	2
<b>Chapter 2</b>	<b>Hardware Installation .....</b>	<b>3</b>
2.1	Hardware Installation .....	3
2.1.1	LED Explanation.....	3
2.2	Software Installation for Windows 2000 .....	3
2.3	Configuration for Windows Vista .....	7
<b>Chapter 3</b>	<b>Configuration.....</b>	<b>11</b>
3.1	Current Status .....	12
3.2	Profile Management .....	13
3.2.1	Add or Modify a Configuration Profile .....	14
3.2.2	Remove a profile .....	18
3.2.3	Switch another Profile .....	18
3.2.4	Import a Profile .....	18
3.2.5	Export a Profile .....	19
3.2.6	Scan Available Networks.....	19
3.2.7	Auto Profile Selection Management.....	20
3.3	Diagnostics.....	21
3.3.1	Check Driver Information.....	22
3.3.2	Check Receive and Transmit Statistical Information .....	22
<b>Appendix A:</b>	<b>Specifications .....</b>	<b>24</b>
<b>Appendix B:</b>	<b>Glossary.....</b>	<b>25</b>

# Chapter 1 Introduction

## 1.1 Product Overview

The TP-LINK TL-WN620G Wireless USB Adapter gives you the flexibility to install your PC or notebook PC in the most convenient location available, without the cost of running network cables.

The adapter's auto-sensing capability allows high packet transfer of up to 108Mbps for maximum throughput, or dynamic range shifting to lower speeds due to distance or operating limitations in an environment with a lot of electromagnetic interference. It can also interoperate with all 11Mbps wireless (802.11b) products. Your wireless communications are protected by up to 152-bit WEP and WPA encryption for high security.

It adopts **2x to 3x eXtended Range™ WLAN transmission technology** so that transmission distance is 2-3 times of traditional 11g/b solutions, up to 855.36m tested in China. Transmission range is extended to 4-9 times.

It adopts **108M Super G™ WLAN Transmission Technology**, which offers the highest throughput performance available on the market today, link rates of up to 108Mbps. In dynamic 108M mode, the device can attach 802.11b, 802.11g and 108Mbps Super G™ devices at the same time in an integrated environment.

## 1.2 Main Features

- Complies with IEEE802.11g, IEEE802.11b standards
- Adopts **108M Super G™** and **2x to 3x eXtended Range™** wireless LAN transmission technologies
- Supports WPA/WPA2 data security, IEEE802.1x authentication, TKIP/AES encryption, 64/128/152-bit WEP encryption
- Supports 108/54/48/36/24/18/12/9/6Mbps or 11/5.5/3/2/1Mbps wireless LAN data transfer rates
- Provides USB interface
- Supports Ad-Hoc and Infrastructure modes
- Supports roaming between access points when configured in Infrastructure mode
- Ease to configure and provides monitoring information
- Supports Windows 98Se, ME, 2000, XP and Vista
- Internal Antenna

## 1.3 Overview the User Guide

Chapter 1: Introduction  
Chapter 2: Hardware Installation Guide  
Chapter 3: Software Installation Guide  
Appendix

## 1.4 Conventions

The Adapter or TL-WN620G, or device mentioned in this User guide stands for TL-WN620G Wireless USB Adapter without any explanations.

Parameters provided in the pictures are just references for setting up the product, which may differ from the actual situation.

You can set the parameters according to your demand.

## Chapter 2 Hardware Installation

### 2.1 Hardware Installation

1. Connect one end of the USB cable to the Adapter.
2. Connect the other end of the USB cable to the USB port on your computer. Because the Adapter gets its power from the host, there is no external power supply. The LED should light up when the Adapter is plugged in and the PC is on.

#### 2.1.1 LED Explanation

LED	Status	Indication
Green	Intermittently	The adapter is in an electricity saving status or the adapter is already connected but is not transmitting or receiving data.
Green	On	The adapter is on wake up status.
Green	Flashing	The adapter is transmitting and receiving data.

### 2.2 Software Installation for Windows 2000

1. Insert the Resource CD into your CD-ROM drive, and open the folder with the same name as your product. Then double-click Setup.exe in the proper folder according to your operating system to start the installation.
2. You can click **Cancel** to end the installation on the Preparing Setup screen, Figure 2-1. Otherwise, the Setup Wizard will display a screen similar to that shown in Figure 2-2 after a moment.

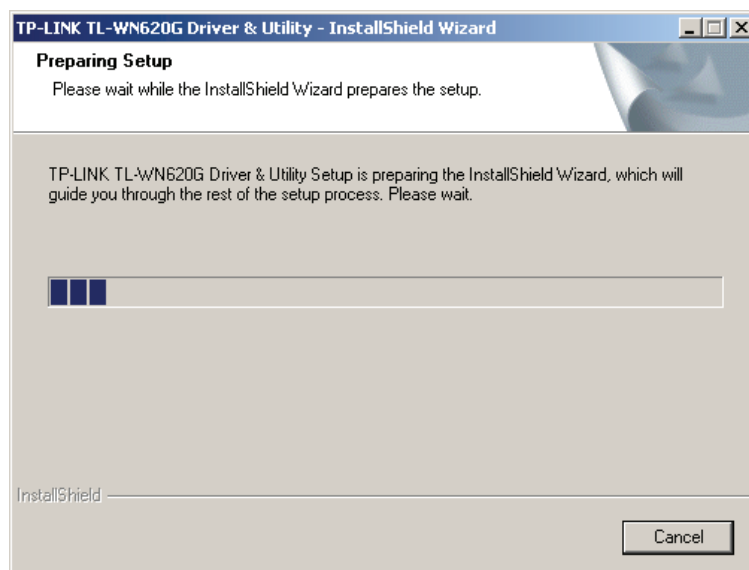


Figure 2-1 TP-LINK TL-WN620G – Install Shield Wizard

- To continue, click **Next** on the screen, Figure 2-2. Click **Cancel** to end the Installation.

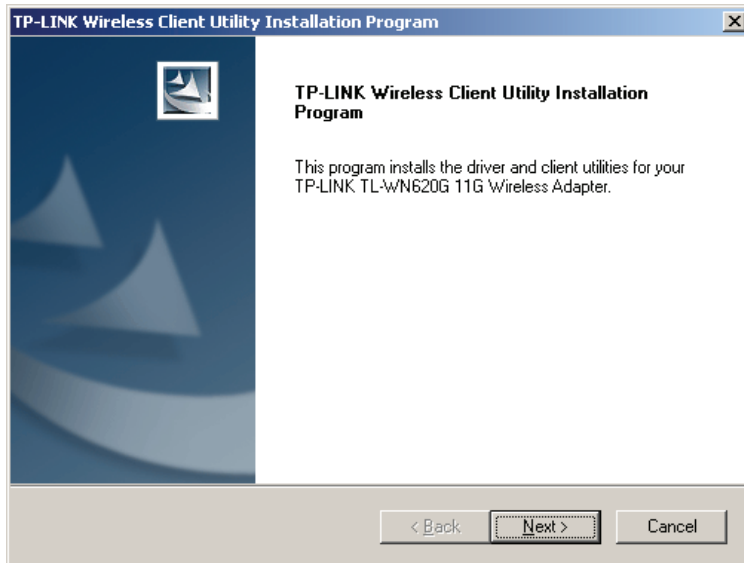


Figure 2-2 TP-LINK TL-WN620G Installation Program

- The Setup Wizard will ask you to choose a Setup type in Figure 2-3. It is recommended that you select **Install Client Utilities and Driver**. Select **Install Driver Only** to install driver only, select **Make Driver Installation Diskette(s)** to make the diskette(s) as the installation driver. Select **Install Client Utilities and Driver** and **Next** to continue the Installation. Click **Back** to return to the previous page, or click **Cancel** to end the Installation.

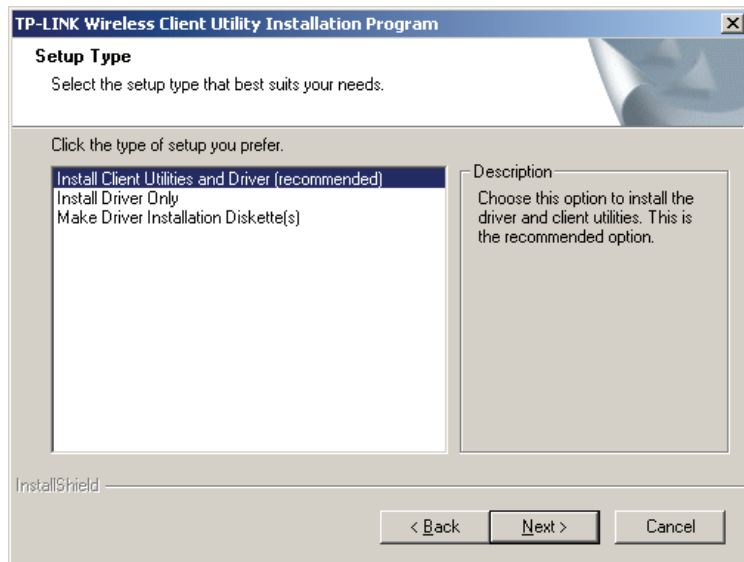


Figure 2-3 Select the setup type.

- Figure 2-4 should appear. Click **Yes** to continue the Installation, or click **No** to end the Installation.

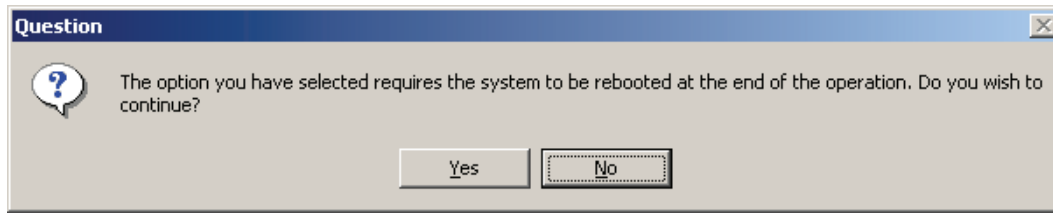


Figure 2-4 Question

6. Click **Browse** to change the Destination Location of the software in Figure 2-5. Click **Next** to continue the Installation. Click **Back** to return to the previous page, or click **Cancel** to end the Installation.

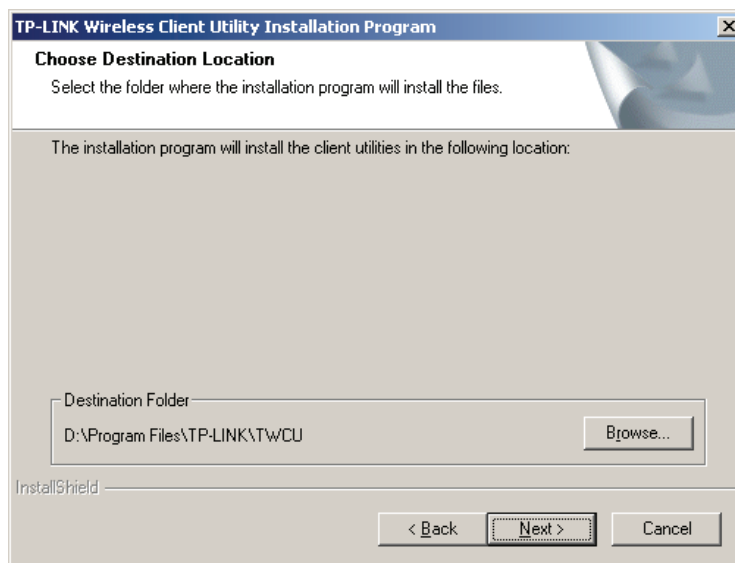


Figure 2-5 Choose Destination Location

7. The Setup Wizard will ask you to create a new folder or select one from the **Existing Folders** list shown in Figure 2-6. It is recommended that you keep the default value. Click **Next** to continue the Installation. Click **Back** to return to the previous page, or click **Cancel** to end the Installation.



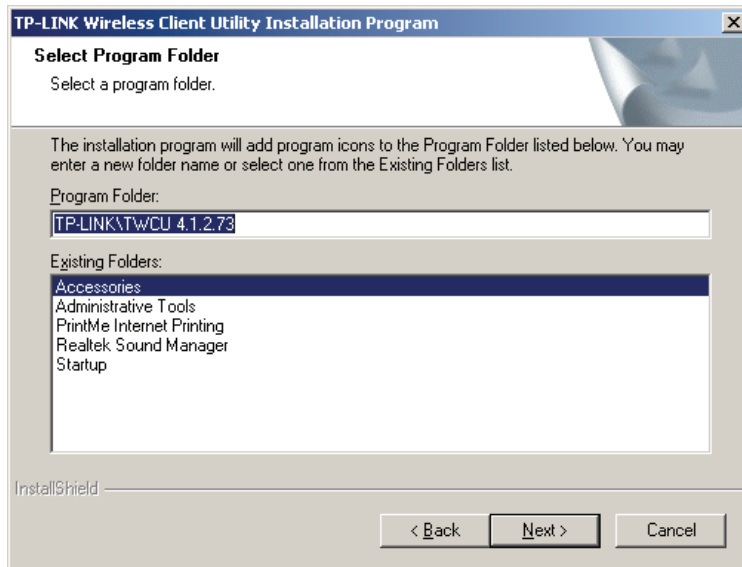


Figure 2-6 Select a Program Folder

8. The Setup Wizard will notify you of how to proceed with the installation, shown in Figure 2-7. Click **OK** to continue the Installation.

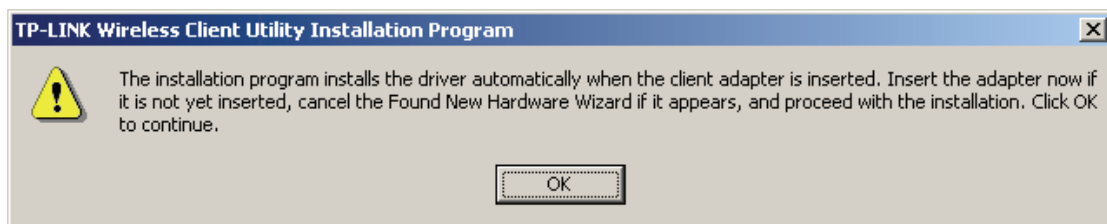


Figure 2-7 Information Prompt

9. While files are copying, you will see a warning box, shown in Figure 2-8. Please select **YES** to continue installation. Our drivers have been tested thoroughly, and *are* able to work with the operating system.

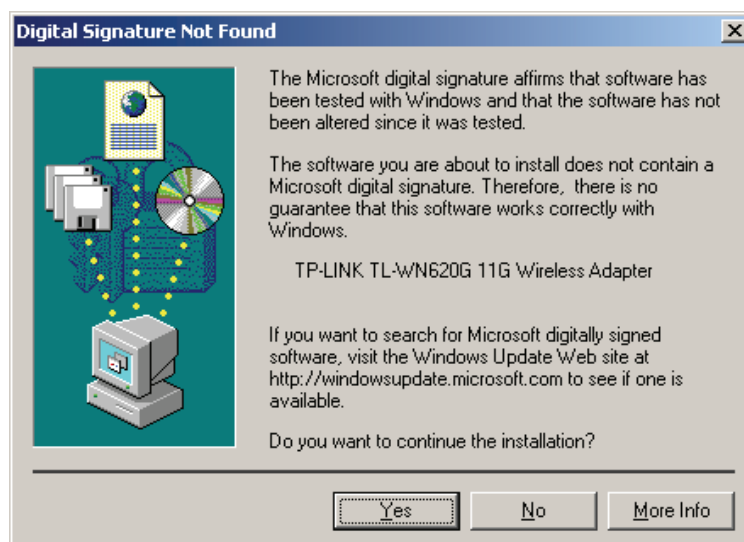


Figure 2-8 Windows 2000 Warning Box

10. After the files have been successfully copied, the screen in Figure 2-9 will appear. Click **OK** to reboot the system.

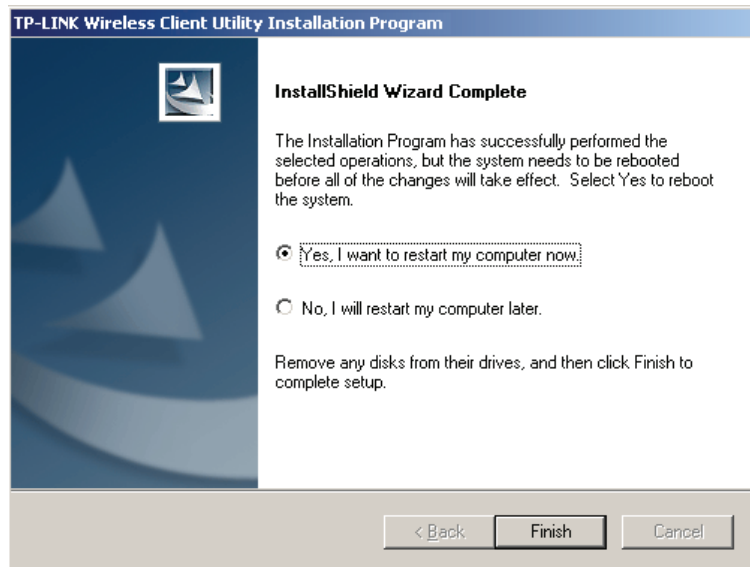


Figure 2-9 Finish

## 2.3 Configuration for Windows Vista

After the Adapter's driver has been installed, Windows Vista will display a wireless Network Connection message like this one.

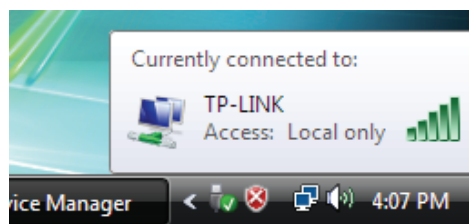





Figure 2-10

Icon  means the connection has been established. Icon  means there is no connection.

If the icon does not appear, please follow the steps below. If the icon still does not appear, the driver may be installed incorrectly or the adapter is unplugged, please try again.

1. Right-click the icon  in your system tray, then click **Connect to a network**.

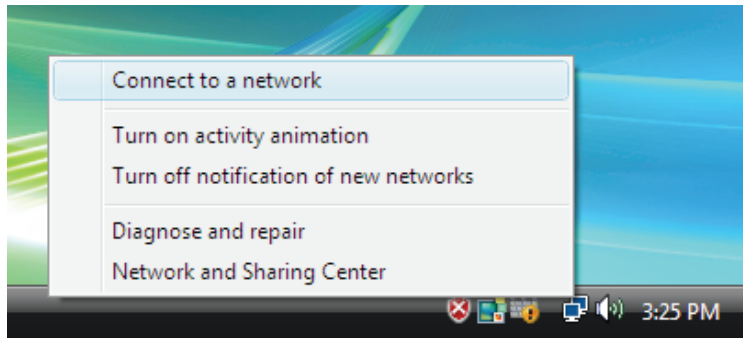


Figure 2-11

2. The screen that appears will show you many available wireless networks. Highlight the network that you want, and then click **Connect**.

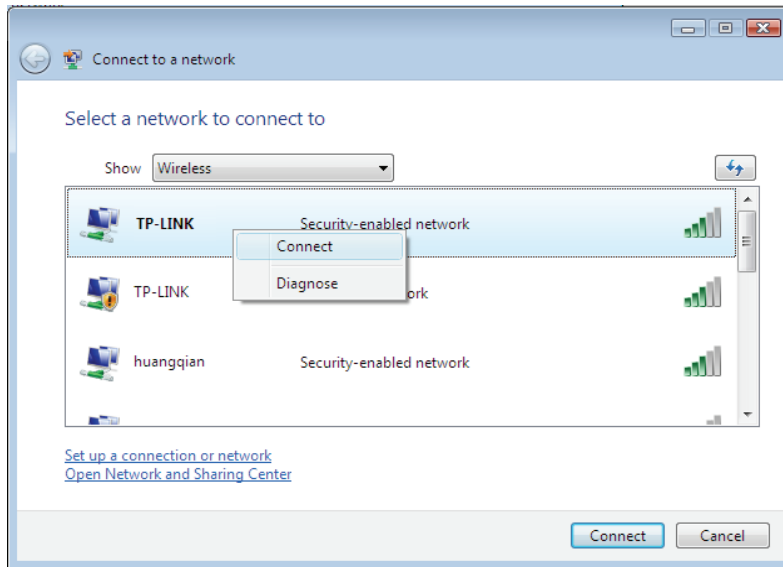


Figure 2-12

3. To continue, click **Connect Anyway**. Click the **Cancel** button to end the Installation.

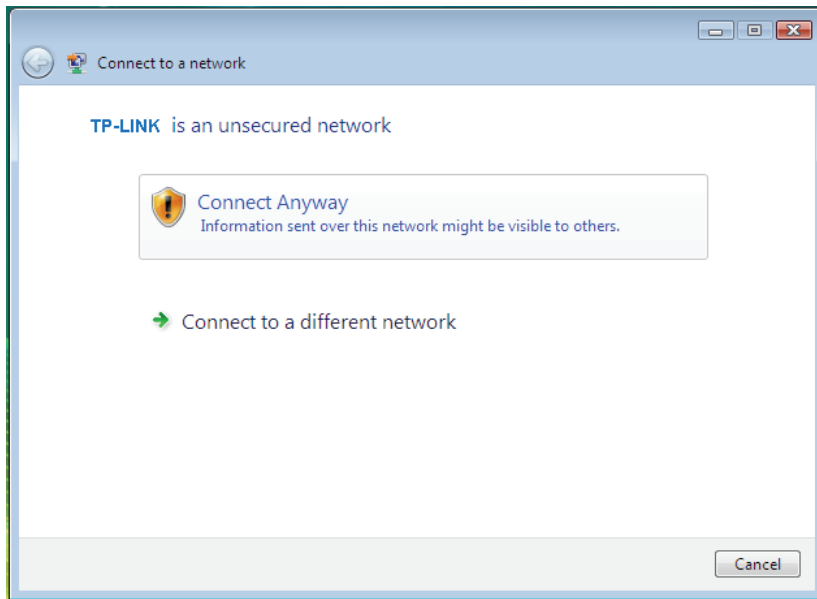


Figure 2-13

4. After that, the installation will proceed as shown in Figure 2-14, click **close**.

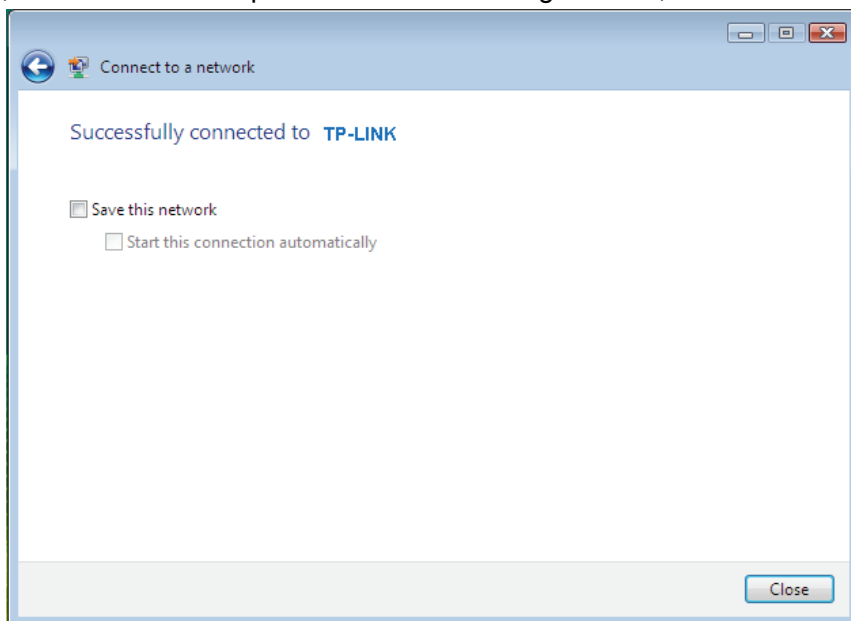


Figure 2-14

5. The screen below will appear if the connection is successful.

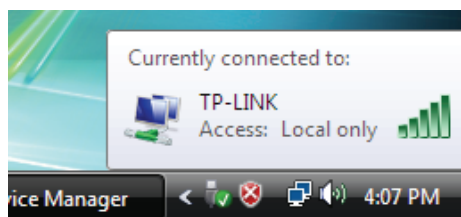



Figure 2-15

## Chapter 3 Configuration

TP-LINK TL-WN620G Wireless USB Adapter can be configured by TP-LINK TL-WN620G Wireless Client Utility. This section describes how to configure your Wireless USB Adapter for wireless connectivity on your Wireless Local Area Network (WLAN) and use the data security encryption features.

After installing the Adapter, the Adapter's tray icon  will appear in your system tray. It appears at the bottom of the screen, and shows the signal strength using color and the received signal strength indication (RSSI).



If the icon is gray, there is no connection.



If the icon is red, there is poor signal strength and the RSSI is less than 5dB.



If the icon is yellow, there is poor signal strength and the RSSI is between 5dB and 10dB.



If the icon is green, there is good signal strength and the RSSI is between 10dB and 20dB.



If the icon is green, there is excellent signal strength and the RSSI is more than 20dB.

Double-click the icon and the **Current Status** screen of TL-WN620G Wireless Client Utility will appear. From this screen, you can view the strength of the Adapter's signal and the quality of its connection. You can also click **Advanced** to view additional status information about the current wireless connection. To Edit or add a configuration profile, click the **Profile Management** tab. To Display current diagnostics information, click the **Diagnostics** tab.

You can also run the Utility by clicking the Start>Program>TP-LINK>TL-WN620G> TL-WN620G Wireless Client Utility. The TL-WN620G Wireless client Utility provides a complete and easy to use set of tools to:

- Display current status information
- Edit and add configuration profiles
- Display current diagnostics information

The section below introduces these above capabilities.

### 3.1 Current Status

The Current Status tab contains general information about the program and its operations. The Current Status tab does not require any configuration.

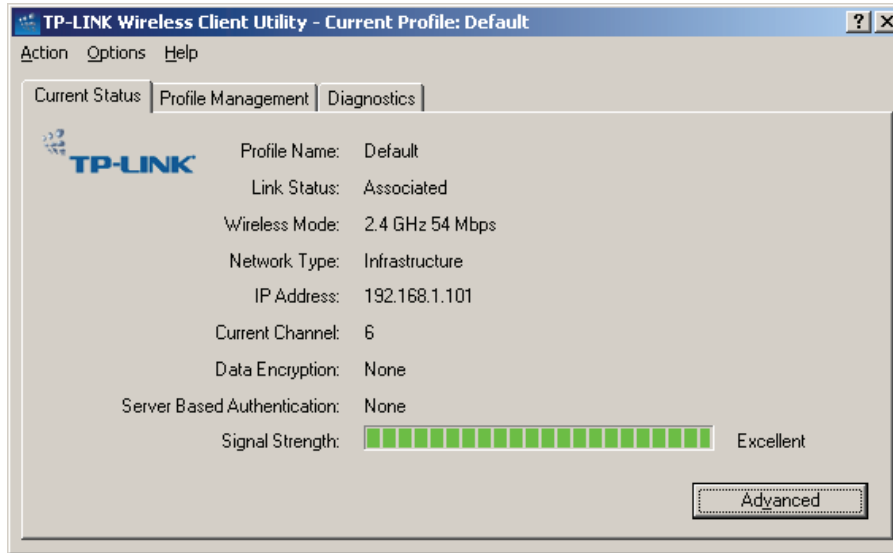


Figure 3-1 Current Status

The following table describes the items found on the Current Status screen.

- **Profile Name** - The name of current selected configuration profile. Set up the configuration name on the **General** tab of **Profile Management**.
- **Link Status** - Shows whether the station is associated to the wireless network.
- **Wireless Mode** - Displays the wireless mode. Configure the wireless mode on the **Advanced** tab of **Profile Management**.
- **Network Type** - The type of network the station is currently connected with. The options include:
  - Infrastructure (access point)
  - Ad Hoc
 Configure the network type on the **Advanced** tab of **Profile Management**.
- **IP Address** - Displays the computer's IP address.
- **Current Channel** - Shows the currently connected channel.
- **Data Encryption** - Displays the encryption type that the driver is using. Configure the encryption type on the **Security** tab of **Profile Management**.
- **Server Based Authentication** - Shows whether server based authentication is used.
- **Signal Strength** - Shows the strength of the signal.

**Note:**

In the TL-WN620G Wireless Client Utility, access the **General** tab, **Security** tab, **Advanced** tab by clicking **New** or **Modify** on the **Profile Management** tab.

Click **Advanced** to see advanced information about the program and its operations. For more information, please refer to the help file of the utility.

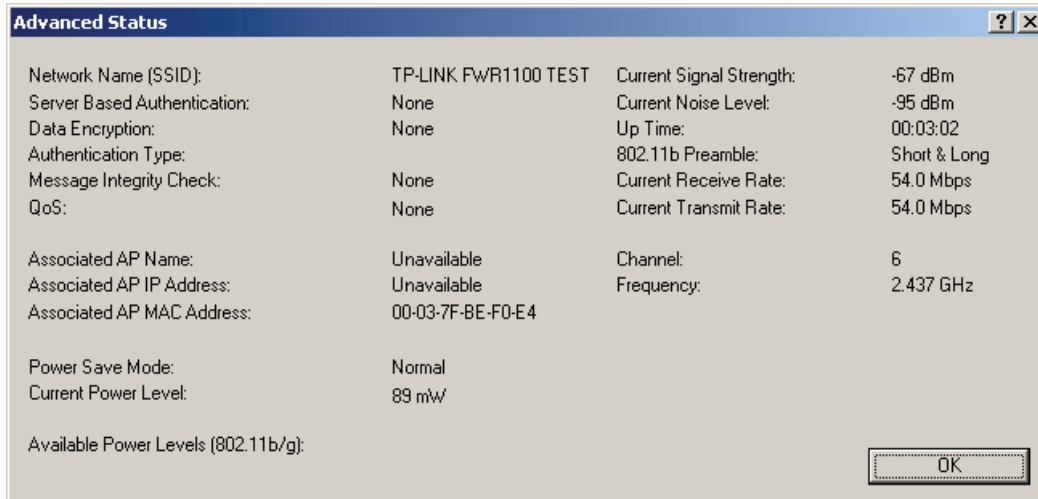


Figure 3-2 Advance Status

### 3.2 Profile Management

Click the **Profile Management** tab of the TL-WN620G Wireless Client Utility and the Profile management screen will appear, Figure 3-3The Profile Management tab provides tools to:

- Add a profile
- Edit a profile
- Remove a profile
- Switch another Profile
- Import a Profile
- Export a Profile
- Scan Available Networks
- Order profiles



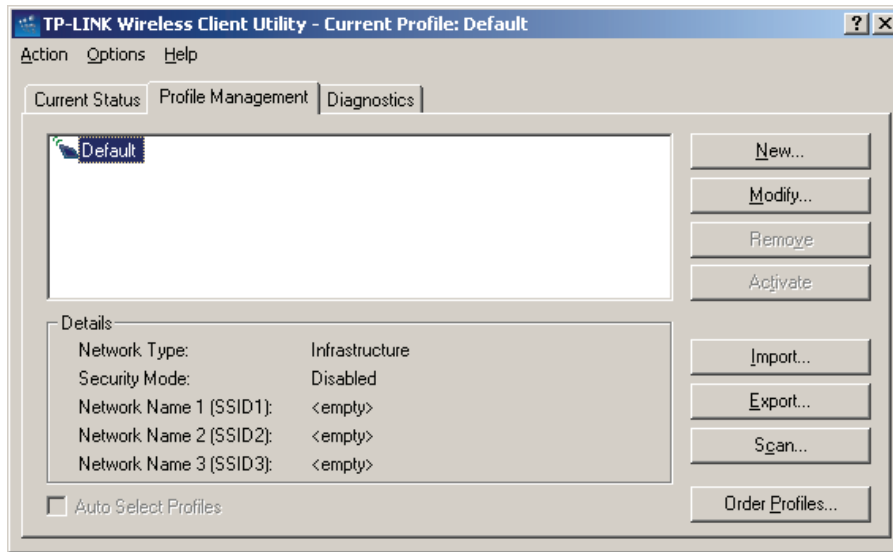


Figure 3-3 Profile Management tab

### 3.2.1 Add or Modify a Configuration Profile

To add a new configuration profile, click **New** on the Profile Management tab. To modify a configuration profile, select the configuration from the Profile list and click **Modify**.

The Profile Management dialog box will display a screen similar to that shown in Figure 3-4.

1. Edit the General tab
  - **Profile Name** - Identifies the configuration profile. This name must be unique. Profile names are not case sensitive.
  - **Client Name** - Identifies the client machine.
  - **Network Names (SSIDs)** - The IEEE 802.11 wireless network name. This field has a maximum limit of 32 characters.

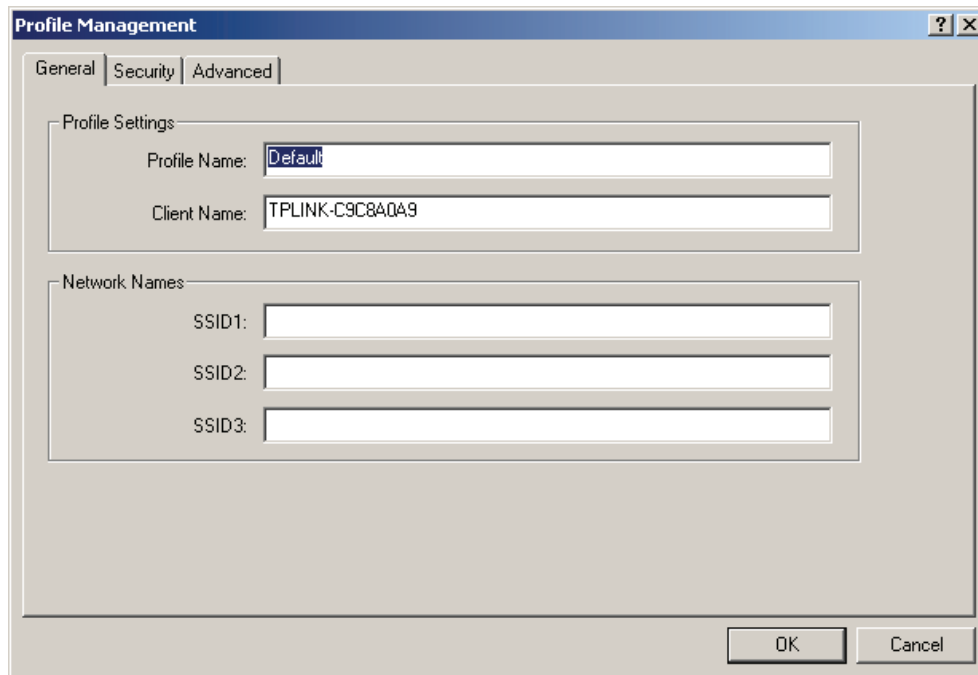


Figure 3-4 General Tab of Profile Management

## 2. Edit the Security tab

Edit the fields in the Security tab of Profile Management to configure the profile. To define the security mode, select the radio button of the desired security mode.

- **WPA/WPA2** - Wi-Fi Protected Access
- **WPA/WPA2 Passphrase** - Wi-Fi Protected Access Passphrase
- **802.1x** - Enables 802.1x security.
- **Shared Key (Static WEP)** - Enables the use of shared keys that are defined on both the access point and the station. To define shared encryption keys, choose the Shared Key radio button and click the Configure button to fill in the Define Shared Keys window.
- **None:** No security (not recommended).

### Note:

If the access point that the wireless adapter is associating to has WEP set to optional and the client has WEP enabled, make sure that Allow Association to Mixed Cells is checked on the Security Tab to allow association. To complete WEP encryption configuration, you must select the **802.11 Authentication Mode** as appropriate on the **Advanced** tab of this **Profile Management** dialog.

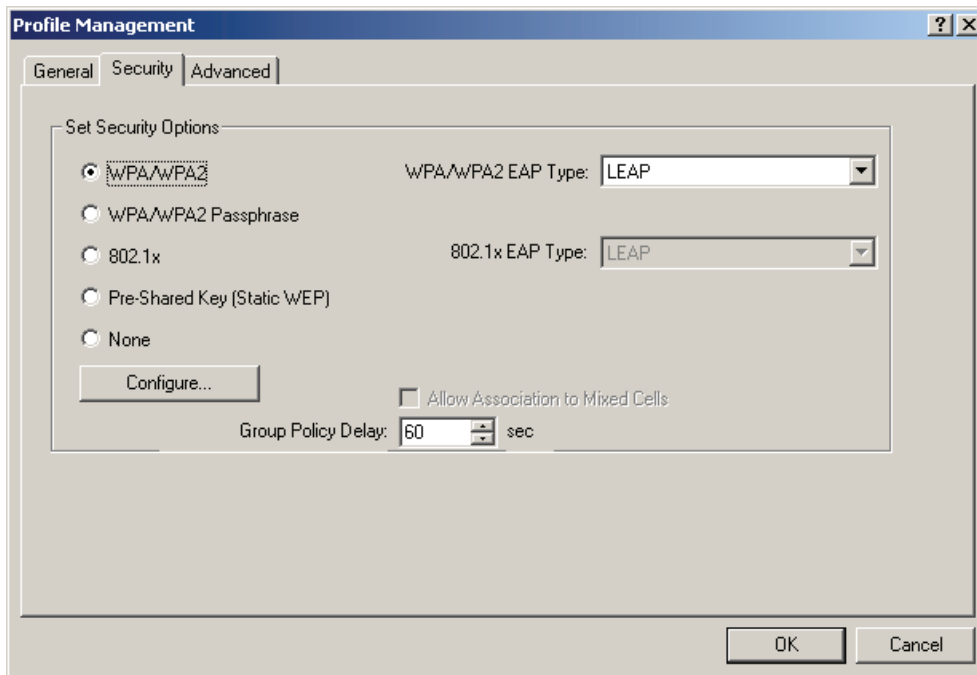


Figure 3-5 Security tab of Profile Management

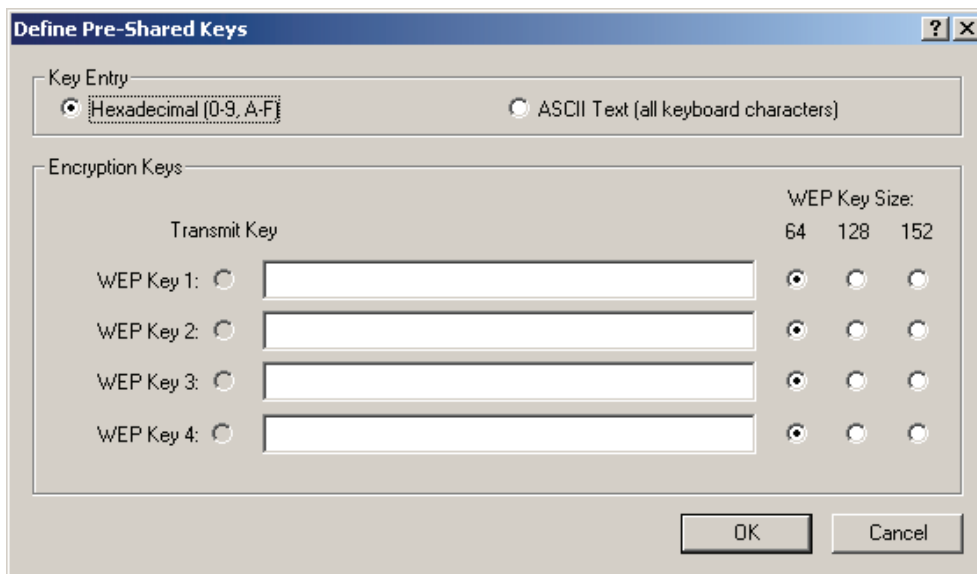


Figure 3-6 Define Shared Keys

3. Edit the Advanced tab

➤ **Power Save Mode -**

- **Maximum** - Select maximum mode to let the access point buffer incoming messages for the wireless adapter. The adapter will detect the access point if any messages are waiting periodically.
- **Normal** - In Normal mode, the adapter will be switched to maximum mode automatically when no large packets are retrieved.
- **Off** - turns power saving off, thus powering up the wireless adapter continuously for a

short message response time.

- **802.11b Preamble** - Specifies the preamble setting in 802.11b. The default setting is Short & Long (access point mode), which allows both short and long headers in the 802.11b frames. The adapter can only use short radio headers if the access point supports and uses them. Set to Long Only to override allowing short frames.
- **Wireless Mode** - Specifies 2.4 GHz 54 Mbps, 2.4 GHz 11 Mbps, or Super G operation in an access point network. The wireless adapter must match the wireless mode of the access point with which it associates.
- **Wireless Mode when Starting an Ad Hoc Network** - Specifies Super G or 2.4 GHz 54/11 Mbps to start an ad hoc network if no matching network name is found after scanning all available modes. This mode also allows the selection of the channel the wireless adapter uses. The channels available depend on the regulatory domain. If the adapter finds no other ad hoc adapters, this selection specifies which channel the adapter starts the ad hoc network with. The wireless adapter must match the wireless mode and channel of the clients it associates.
- **802.11 Authentication Mode** - Select which mode the wireless adapter uses to authenticate to an access point:
  - **Automatic** causes the adapter to attempt authentication using shared, but switches it to open authentication if shared fails.
  - **Open System** enables an adapter to attempt authentication regardless of its WEP settings. It will only associate with the access point if the WEP keys on both the adapter and the access point match.
  - **Shared-Key** only allows the adapter to associate with access points that have the same WEP key.

For infrastructure (access point) networks, click **Preferred APs...** to specify up to four access points to the client adapter that attempts to be associated to the access points.

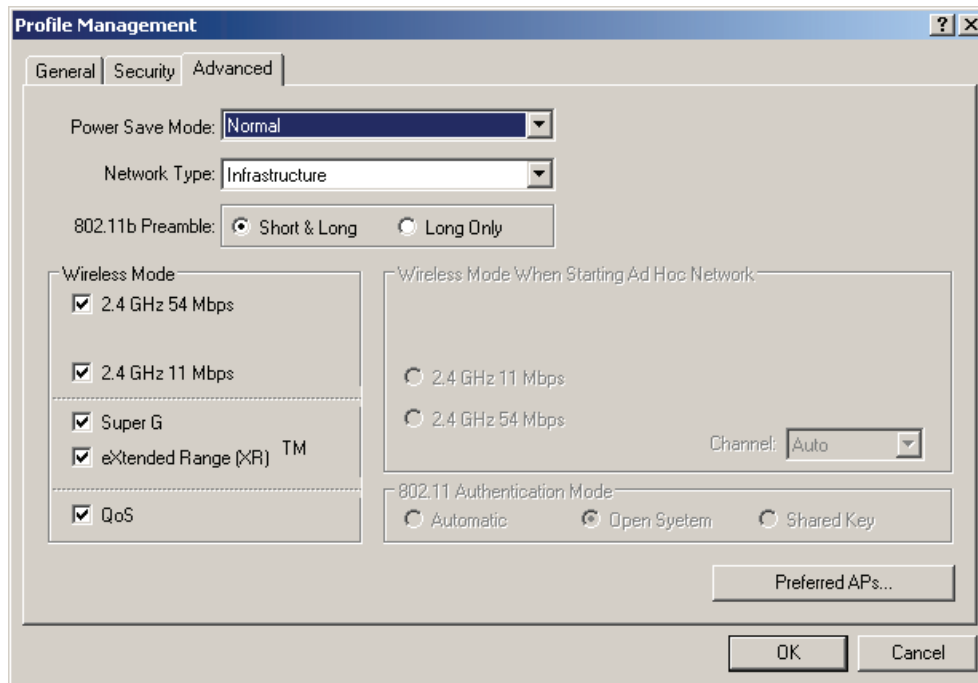


Figure 3-7 Advanced tab of Profile Management

### 3.2.2 Remove a profile

1. Go to the Profile Management tab.
2. Select the profile to remove from the Profile List.
3. Click **Remove**.

### 3.2.3 Switch another Profile

1. Go to the Profile Management tab.
2. Click on the profile name in the Profile List.
3. Click **Activate**.

### 3.2.4 Import a Profile

1. From the Profile Management tab, click **Import....** The Import Profile will then appear.
2. Browse the directory where the profile is located.
3. Highlight the profile name.
4. Click **Open**, the imported profile will then appear in the profiles list.

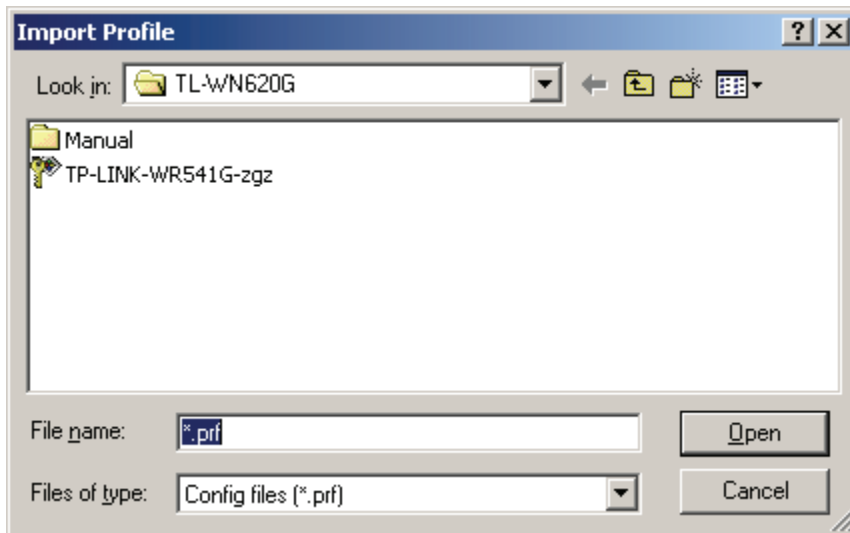


Figure 3-8 Import Profile Dialog

### 3.2.5 Export a Profile

1. From the Profile Management tab, highlight the profile to export.
2. Click **Export...**, the Export Profile window will then appear.
3. Browse the directory to export the profile.
4. Click **Save**. The profile should then be exported to the specified location.

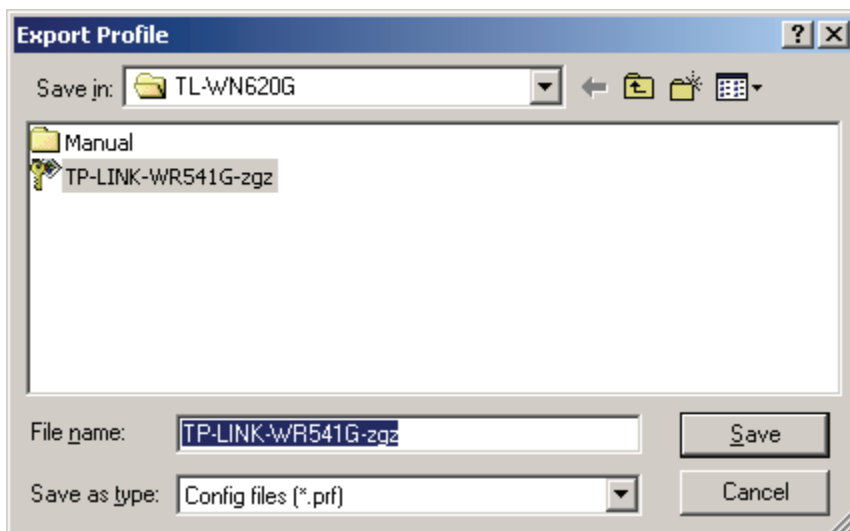


Figure 3-9 Export Profile Dialog

### 3.2.6 Scan Available Networks

1. Click **Scan** on Profile Management, the Available Infrastructure and Ad Hoc Networks window will appear.
2. Click **Refresh** to refresh the list at any time.
3. Highlight a network name and click **Activate** to connect to an available network. If no configuration profile exists for that network, the Profile Management window will open the

General tab. Fill in the Profile name and click **OK** to create the configuration profile for that network.

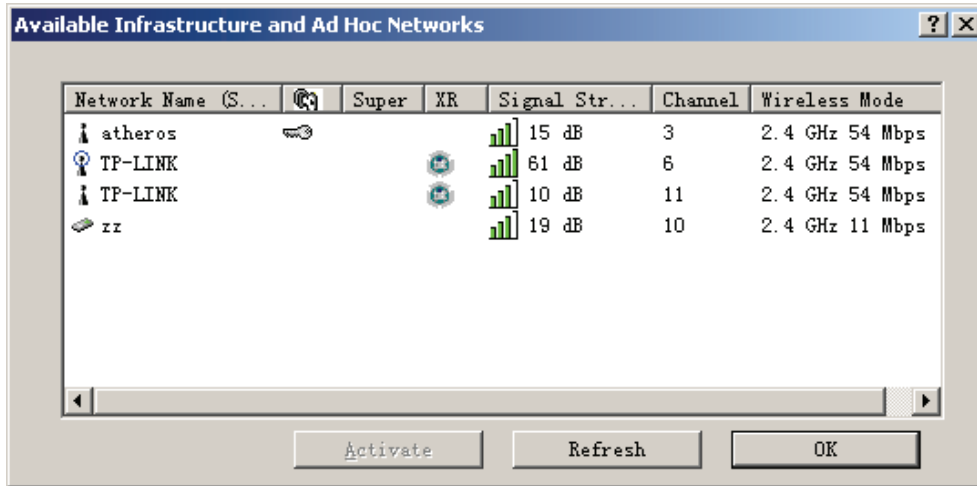


Figure 3-10 Scan Available Networks Dialog

### 3.2.7 Auto Profile Selection Management

The auto selection feature allows the wireless adapter to automatically select a profile from the list of profiles and use it to connect to the network. To add a new profile into the Auto Selected Profiles list, please follow these steps.

1. On the Profile Management tab, click **Order Profiles....**
2. The Auto Profiles Selection management window will appear, with a list of all created profiles in the Available Profiles box.
3. Highlight the profiles to add to auto profile selection, and click **Add**. The profile will appear in the Auto Selected Profiles box.
4. Highlight a profile in the Auto Selected Profiles box.
5. Click **Move Up** or **Move Down** as appropriate.

**Note:**

The first profile in the Auto Selected Profiles box has highest priority, and the last profile has lowest priority.

6. Click **OK**.
7. Check the **Auto Select Profiles** box on the **Profile Management** tab.

**Note:**

When auto profile selection is enabled by checking **Auto Select Profiles** on the **Profile Management** tab, the client adapter will scan for an available network. The profile with the highest priority and the same SSID as one of the found networks will be used to connect to the network. If the connection fails, the client adapter will try the next highest priority profile that matches the SSID until an available network is found.

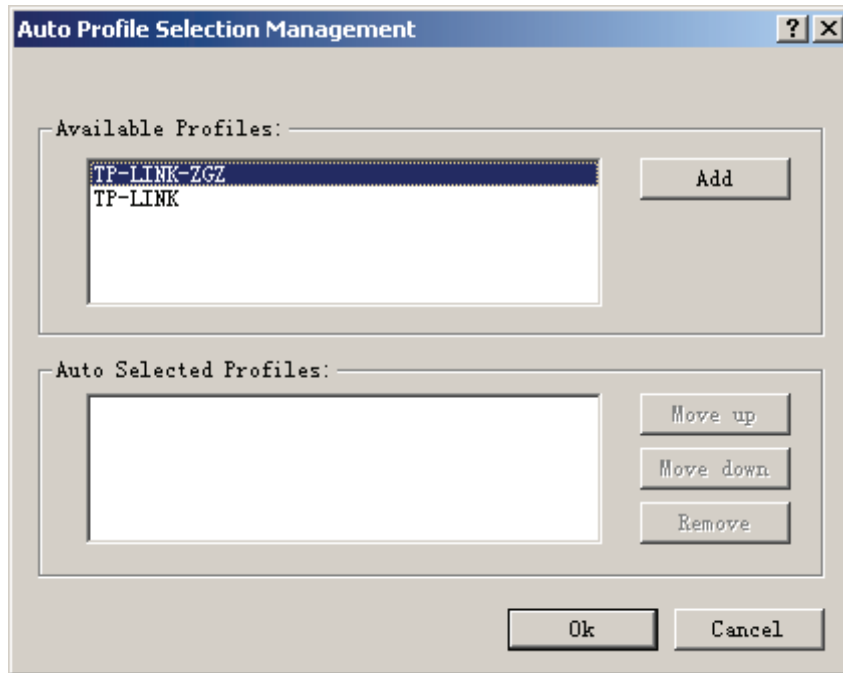


Figure 3-11 Auto Profile Selection Management Dialog

### 3.3 Diagnostics

The **Diagnostics** tab of the TL-WN620G Wireless Client Utility provides buttons used to retrieve receiving and transmitting statistics. The Diagnostics tab does not require any configuration.

The **Diagnostics** tab lists the following receive and transmit diagnostics for frames received by or transmitted by the wireless network adapter:

- Multicast frames transmitted and received
- Broadcast frames transmitted and received
- Unicast frames transmitted and received
- Total bytes transmitted and received



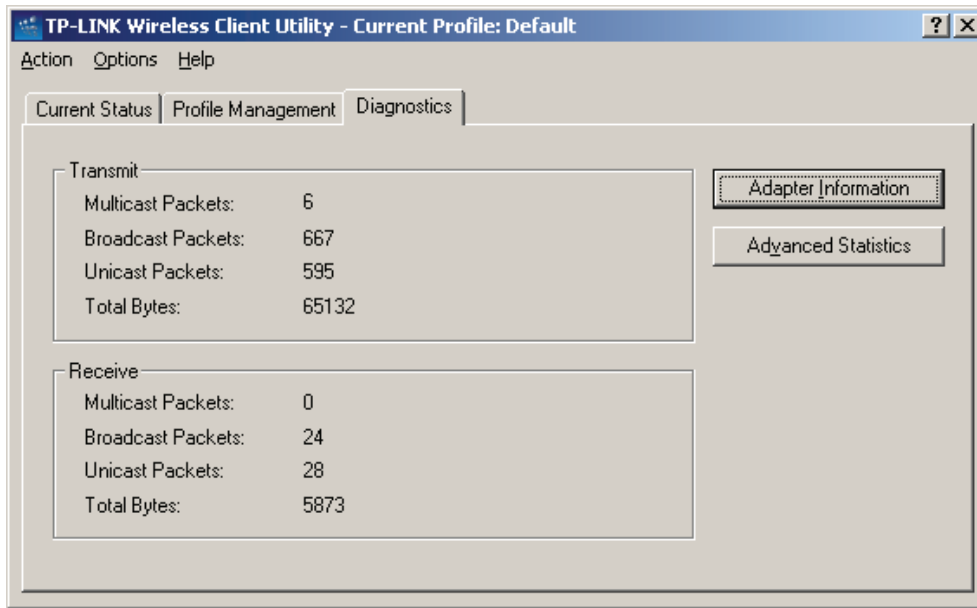


Figure 3-12 Diagnostics tab

### 3.3.1 Check Driver Information

The **Adapter Information** contains general information about the network interface card (the wireless network adapter) and the network driver interface specification (NDIS) driver. Access the adapter information from the Diagnostics tab.

- **Card Name** - The name of the wireless network adapter.
- **MAC Address** - The MAC address of the wireless network adapter.
- **Driver** - The driver name and path of the wireless network adapter driver.
- **Driver Version** - The version of the wireless network adapter driver.
- **Driver Date** - The creation date of the wireless network adapter driver.
- **Client Name** - The name of the client computer.

### 3.3.2 Check Receive and Transmit Statistical Information

The **Advanced Statistics** show receiving and transmitting statistical information for the following receive and transmit diagnostics for frames received by or transmitted to the wireless network adapter.

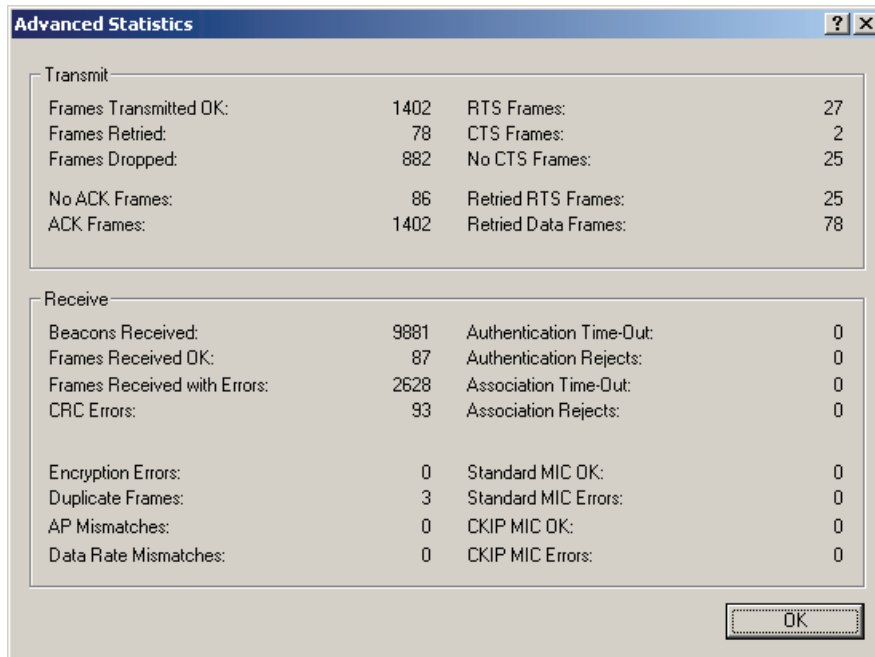


Figure 3-13 Advanced Statistics

## Appendix A: Specifications

Normal	
Interface	A-type USB 2.0 Connector
Standards	IEEE802.11b; IEEE802.11g
Operating System	Windows 98Se, Me, 2000, XP and Vista
Transmission Distance	Indoor up to 100m, outdoor up to 300m (Standard transmission distance, It is limited to the environment). Indoor up to 200m, Outdoor up to 830m (Adopt 2x to 3x eXtended Range™ WLAN transmission technology, it is limited to the environment)
Radio Data Rate	108/54/48/36/24/18/12/9/6Mbps or 11/5.5/3/2/1Mbps Mbps (Auto Rate Sensing)
Modulation	1M DBPSK; 2M DQPSK; 5.5M, 11M CCK; 6M, 9M, 12M, 18M, 24M, 36M, 48M, 54M, 108M OFDM;
Media Access Protocol	CSMA/CA with ACK
Transmit Power	18dBm (Typical)
Data Security	WPA/WPA2; 64/128/152 BIT WEP; TKIP/AES
Frequency	2.4 ~ 2.4835GHz
Spread Spectrum	Direct Sequence Spread Spectrum (DSSS)
Power Consumption	Typically 550mA in full Transmit (TX), 450mA in full Receive (RX)
Safety & Emissions	FCC, CE

Physical Environmental	
Operating Temp	0°C~40°C (32°F~104°F)
Storage Temp	-20°C– 70°C (-4°F~158°F)
Operating Humidity	10% - 90% RH, Non-condensing
Storage Humidity	5% - 95% RH, Non-condensing

## Appendix B: Glossary

- **108M Super G™ WLAN Transmission Technology** - 108M Super G™ WLAN Transmission Technology employs multiple performance-enhancing techniques including packet bursting, fast frames, data compression, and dynamic turbo mode that combine to improve the throughput and range of wireless networking products. Users can experience link rates of up to 108Mbps, twice the industry-standard maximum data link rate of 54Mbps, while preserving full compatibility with traditional 802.11g or 802.11b networks. 108M Super G™ products offer the highest throughput performance available on the market today. In dynamic 108M mode, the device can attach 802.11b, 802.11g and 108Mbps Super G™ devices at the same time in an integrated environment.
- **2x to 3x eXtended Range™ WLAN Transmission Technology** - The WLAN device with 2x to 3x eXtended Range™ WLAN transmission technology make its sensitivity up to 105 dB, which gives users the ability to have robust, longer-range wireless connections. With this range-enhancing technology, a 2x to 3x eXtended Range™ based client and access point can maintain a connection at as much as three times the transmission distance of traditional 802.11b and 802.11g products, for a coverage area that is up to nine times greater. A traditional 802.11b and 802.11g product transmission distance is about 300m, A TP-LINK 2x to 3x eXtended Range™ based client and access point can maintain a connection transmission distance may be up to 830m.
- **802.11b** - The 802.11b standard specifies a wireless product networking at 11 Mbps using direct-sequence spread-spectrum (DSSS) technology and operating in the unlicensed radio spectrum at 2.4GHz, and WEP encryption for security. 802.11b networks are also referred to as Wi-Fi networks.
- **802.11g** - specification for wireless networking at 54 Mbps using direct-sequence spread-spectrum (DSSS) technology, using OFDM modulation and operating in the unlicensed radio spectrum at 2.4GHz, and backward compatibility with IEEE 802.11b devices, and WEP encryption for security.
- **Ad-hoc Network** - An ad-hoc network is a group of computers, each with a wireless adapter, connected as an independent 802.11 wireless LAN. Ad-hoc wireless computers operate on a peer-to-peer basis, communicating directly with each other without the use of an access point. Ad-hoc mode is also referred to as an Independent Basic Service Set (IBSS) or as peer-to-peer mode, and is useful at a departmental scale or SOHO operation.
- **DSSS (Direct-Sequence Spread Spectrum)** - DSSS generates a redundant bit pattern for all data transmitted. This bit pattern is called a chip (or chipping code). Even if one or more bits in the chip are damaged during transmission, statistical techniques embedded in the receiver can recover the original data without the need for retransmission. To an unintended receiver, DSSS appears as low power wideband noise and is rejected (ignored) by most narrowband receivers. However, to an intended receiver (i.e. another wireless LAN endpoint), the DSSS signal is recognized as the only valid signal, and interference is inherently rejected (ignored).

- **FHSS (Frequency Hopping Spread Spectrum)** - FHSS continuously changes (hops) the carrier frequency of a conventional carrier several times per second according to a pseudo-random set of channels. Because a fixed frequency is not used, and only the transmitter and receiver know the hop patterns, interception of FHSS is extremely difficult.
- **Infrastructure Network** - An infrastructure network is a group of computers or other devices, each with a wireless adapter, connected as an 802.11 wireless LAN. In infrastructure mode, the wireless devices communicate with each other and to a wired network by first going through an access point. An infrastructure wireless network connected to a wired network is referred to as a Basic Service Set (BSS). A set of two or more BSS in a single network is referred to as an Extended Service Set (ESS). Infrastructure mode is useful at a corporation scale, or when it is necessary to connect the wired and wireless networks.
- **Spread Spectrum** - Spread Spectrum technology is a wideband radio frequency technique developed by the military for use in reliable, secure, mission-critical communications systems. It is designed to trade off bandwidth efficiency for reliability, integrity, and security. In other words, more bandwidth is consumed than in the case of narrowband transmission, but the trade off produces a signal that is, in effect, louder and thus easier to detect, provided that the receiver knows the parameters of the spread-spectrum signal being broadcast. If a receiver is not tuned to the right frequency, a spread-spectrum signal looks like background noise. There are two main alternatives, Direct Sequence Spread Spectrum (DSSS) and Frequency Hopping Spread Spectrum (FHSS).
- **SSID** - A **S**ervice **S**et **I**dentification is a thirty-two character (maximum) alphanumeric key identifying a wireless local area network. For the wireless devices in a network to communicate with each other, all devices must be configured with the same SSID. This is typically the configuration parameter for a wireless PC card. It corresponds to the ESSID in the wireless Access Point and to the wireless network name.
- **WEP (Wired Equivalent Privacy)** - A data privacy mechanism based on a 64-bit or 128-bit or 152-bit shared key algorithm, as described in the IEEE 802.11 standard.
- **Wi-Fi** - A trade name for the 802.11b wireless networking standard, given by the Wireless Ethernet Compatibility Alliance (WECA, see <http://www.wi-fi.net>), an industry standards group promoting interoperability among 802.11b devices.
- **WLAN (Wireless Local Area Network)** - A group of computers and associated devices communicate with each other wirelessly, which network serving users are limited in a local area.
- **WPA (Wi-Fi Protected Access)** - A wireless security protocol use TKIP (Temporal Key Integrity Protocol) encryption, which can be used in conjunction with a RADIUS server.