



User Guide

Kasa Wire-Free Camera

Contents

About This Guide	1
Introduction	2
Appearance	3
Power Up Your Camera	5
How to Charge Your Battery?	8
Set Up Your Camera	9
View Your Camera	11
Check Battery Power	12
Configure Your Camera	13
Check Activities	14
Discover Kasa	15
Authentication	16

About This Guide

This guide provides a brief introduction to the Indoor/Outdoor Security Camera System and the Kasa app, as well as regulatory information.

Features available in Kasa Smart Wire-Free Camera may vary by model and software version. Kasa Smart Wire-Free Camera availability may also vary by region. All images, steps, and descriptions in this guide are only examples and may not reflect your actual experience.

Conventions

In this guide, the following convention is used:

Convention	Description
Camera	Stands for Kasa Smart Wire-Free Camera.
Hub	Stands for Kasa Smart Camera Hub.
Teal	Key information appears in teal, including management page text such as menus, items, buttons and so on.
<u>Underline</u>	Hyperlinks are in teal and underlined. You can click to redirect to a website.

More Info

- Specifications can be found on the product page at <https://www.tp-link.com>.
- Our Technical Support and troubleshooting information can be found at <https://www.tp-link.com/support>.

Introduction

An Indoor/Outdoor Security Camera System generally includes one Kasa Smart Camera Hub and one or more Kasa Smart Wire-Free Cameras. The Kasa Smart Wire-Free Camera monitors anywhere and everywhere. Monitor live video and recordings directly on the Kasa Smart app from the convenience of your smartphone. The Kasa Smart Camera Hub adds a layer of security with a siren, alert and audio recordings to mimic occupancy. Your home is always protected.

- **Night Vision**

At night, the camera will detect activity up to 25 ft. away with night vision.

- **Wired or Wire-free**

A camera that gives you freedom to take it anywhere you want. When connected to our adapter, the Kasa Smart camera allows for a pre-roll which begins recording a few seconds before every clip.

- **Crystal Clear 1080p Video**

Sharp and clear 1080p video makes sure you never miss a thing. In the dark, the camera will detect activity up to 25 feet away with Night Vision.

- **Rechargeable Lithium Ion Battery***

With a low-power Wi-Fi protocol, we've extended the battery life for a longer and smarter experience.

*Optional: Adapter for wired use if needed.

- **Built-in Siren and 2-way Talk**

Use crisp 2-way audio to communicate with the delivery person at your front door or use the camera's siren to scare away intruders.

- **More Than A Hub**

The hub helps save power and also plays as a secondary security alarm. Any intruder will be met with an unwelcome sound.

- **Weatherproof**

The Kasa Smart Wire-Free Camera is weatherproof and will be protected against rain and dust.

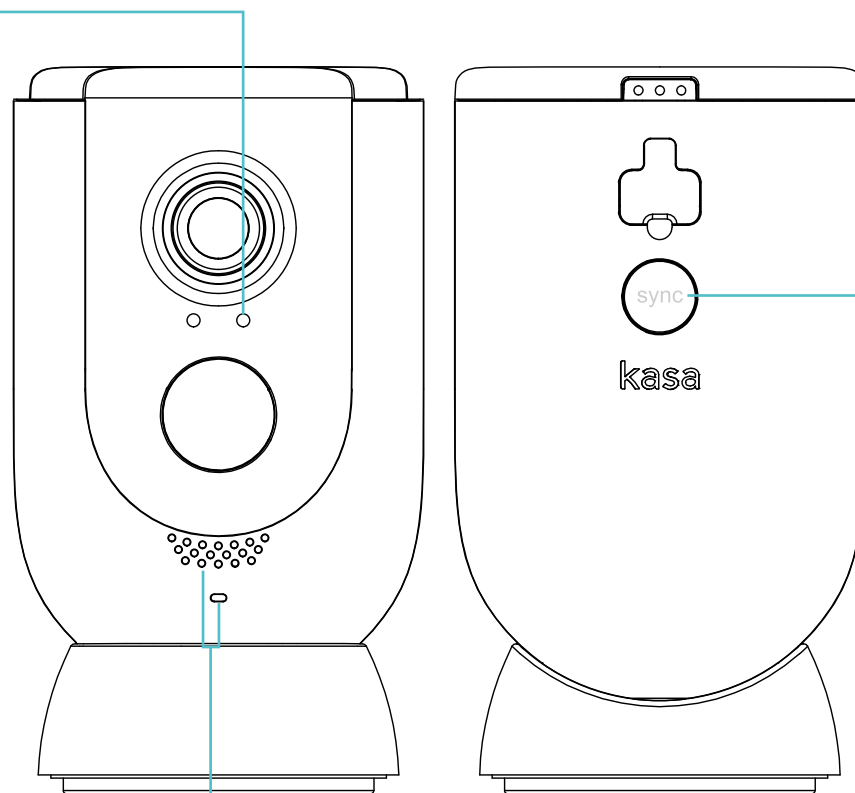


Appearance

Kasa Smart Wire-Free Camera has a system LED that changes color according to its status, speakers and microphone, and a Sync button. See the explanation below:

System LED

- ◉ Alternating amber and green:
Powering on or starting up
- ◉ Flashing green:
Connecting to hub (Discovery mode)
- Solid green:
Connected to hub
- ◉ Quick flashing red:
Failed to connect to or sync with hub
- Flashing red once per minute:
Low battery (below 15%)
- ◉ Quick flashing amber:
Firmware updating
- Flashing amber once per second:
Factory resetting
- Solid amber:
No connection, initializing, or rebooting
- Solid blue:
Battery starts charging
- Off:
No power or Status LED off



Sync button

- Press for 1 second during Discovery mode:
Initiates the syncing process with hub
- Press and hold for about 15 seconds:
Resets the camera to factory settings

Speaker and Microphone

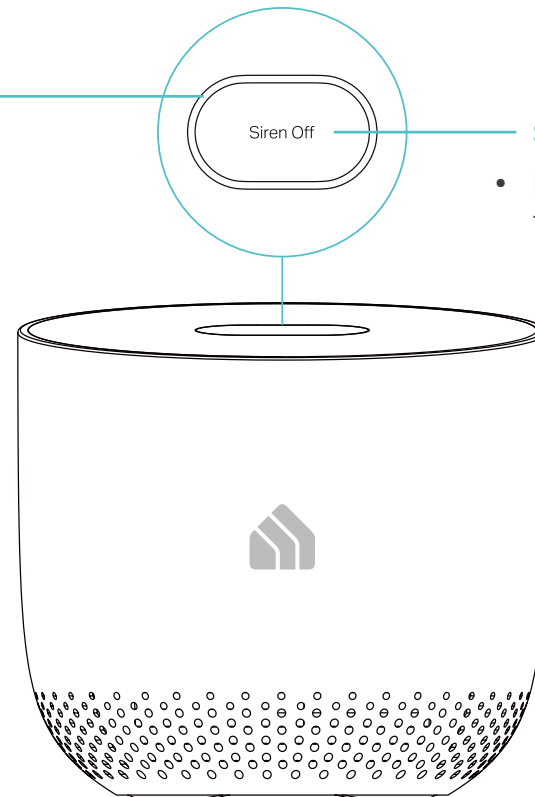
Built-in internal speaker and microphone are protected by the waterproof membrane.

⚠ Warning: Do NOT insert objects into the holes!

Kasa Smart Camera Hub has a LED ring that changes color according to its status, a Siren Off button, and a Reset button. See the explanation below:

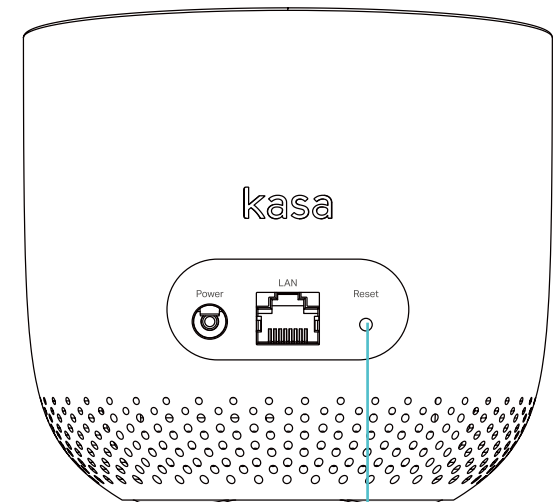
System LED

- **Alternating orange and green:**
Connected to home router but no internet connection
- **Alternating red and green:**
Not connected to home router and internet
- **Quick flashing green:**
Camera attempting to sync with hub (Discovery mode)
- **Flashing green once per second:**
Connected to home router and internet
- **Solid green:**
Camera connected to hub
- **Solid red:**
Camera too far from hub
- **Flashing red:**
Siren or speaker is on
- **Quick flashing orange:**
Firmware updating
- **Flashing orange once per second:**
Factory resetting
- **Solid orange:**
Powering on or starting up
- **Off:**
Communicating with camera and internet, no camera connected, or no power



Siren Off button

- Press for 1 second when siren is on:
Turns off the siren



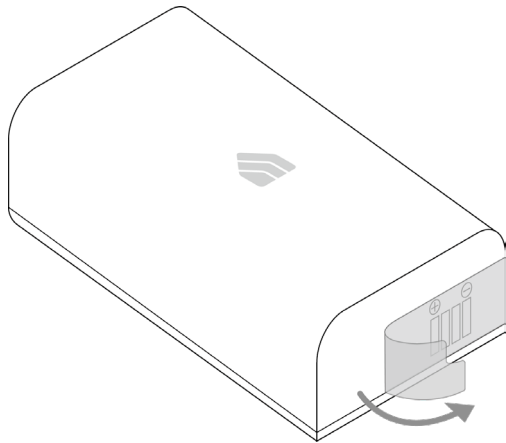
Reset button

- Press and hold for about 15 seconds
when neither siren nor alert is playing:
Resets the hub to factory settings

Power Up Your Camera

Method 1: Powered by Battery

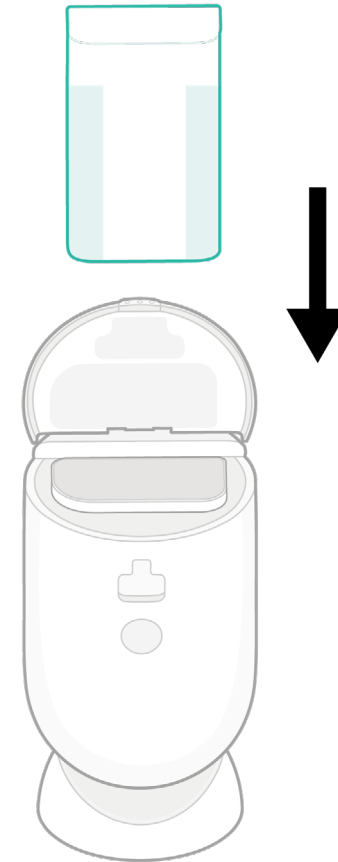
1. Remove the protective film on the battery.



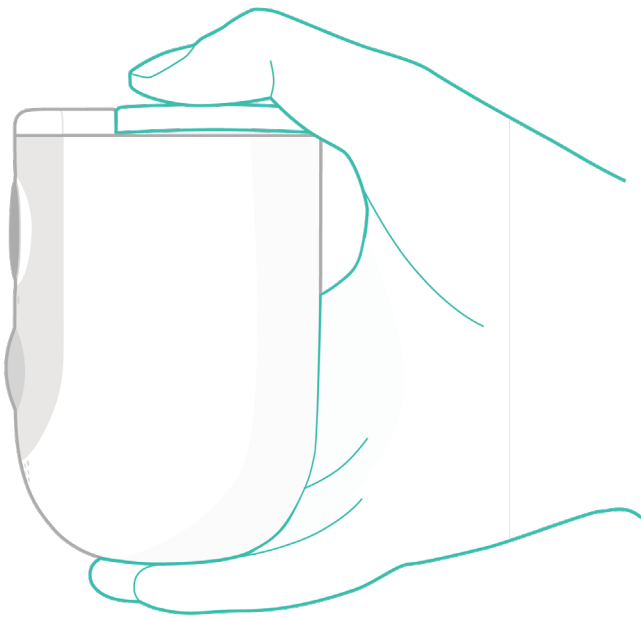
2. Open the cover of the camera.



3. Insert the battery. Make sure its positive and negative ends are facing the correct direction.



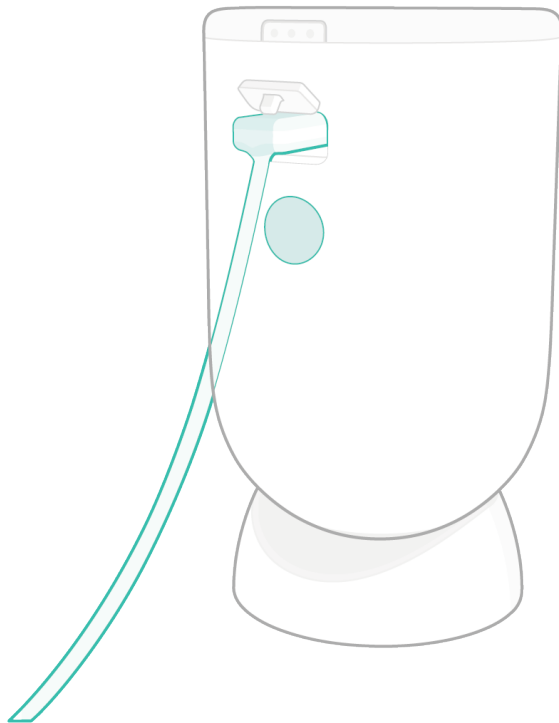
4. Firmly press the cover for the secure seal.



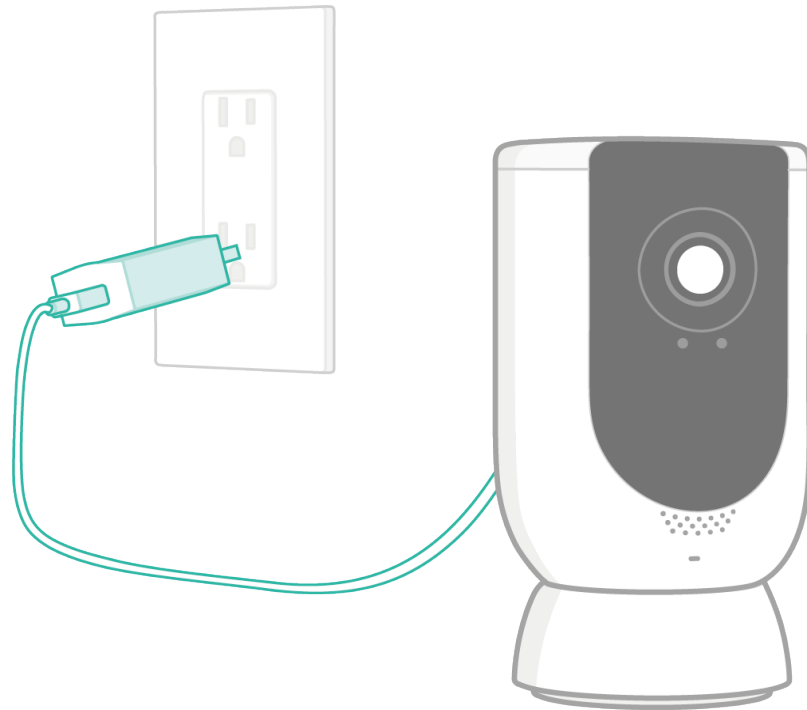
Power Up Your Camera

Method 2: Powered by Power Adapter

1. Pull up the cover for USB cable on the back and connect it to the provided power adapter.



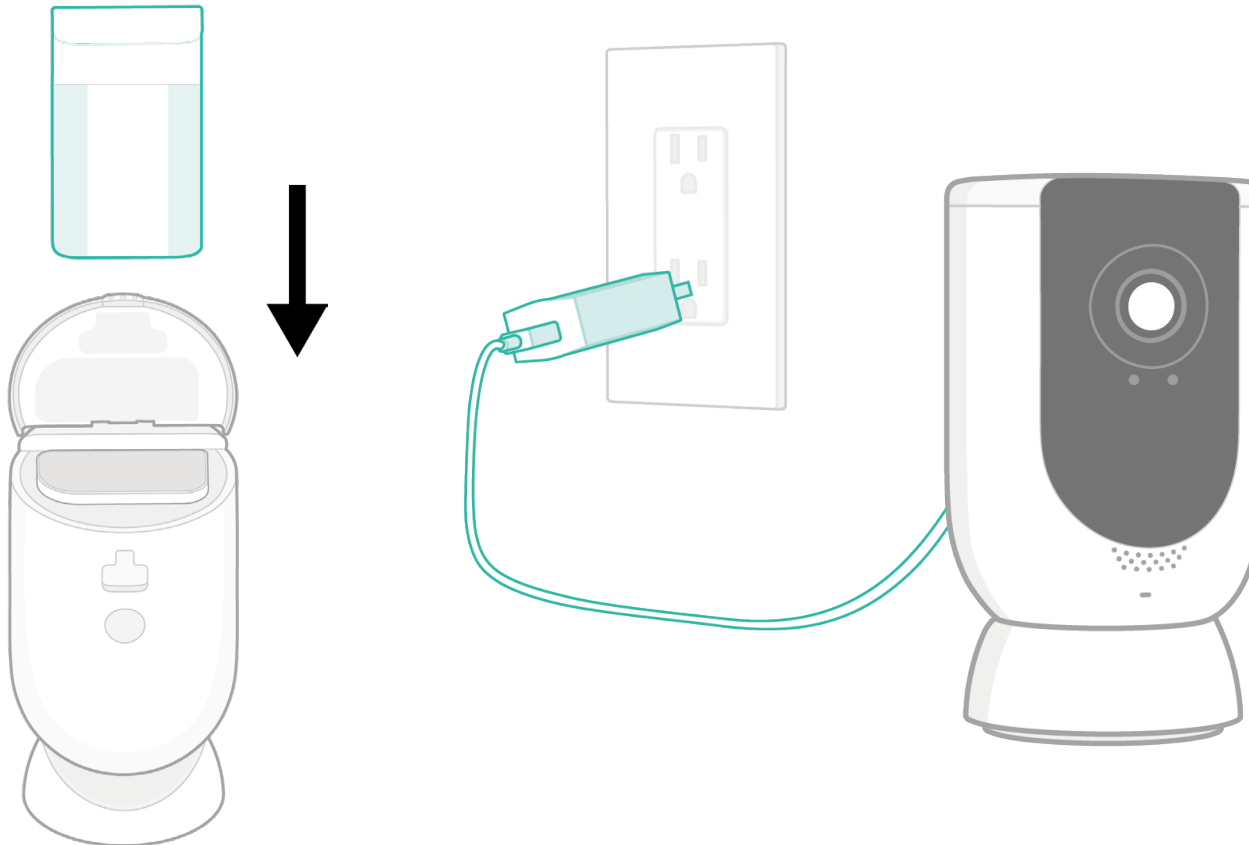
2. Connect the power adapter to an outlet.



How to Charge Your Battery?

If you have installed the battery but the LED of the camera is off, then probably the battery is out of power and need to be charged. When the LED of the camera blinks red once per minute, it means the battery power is low and need to be charged. Follow the instructions below to charge the battery.

1. Insert the battery based on [Method 1](#) above.
2. Connect the camera to a power outlet based on [Method 2](#) above.



Set Up Your Camera

Follow the steps below to get started with your new camera.

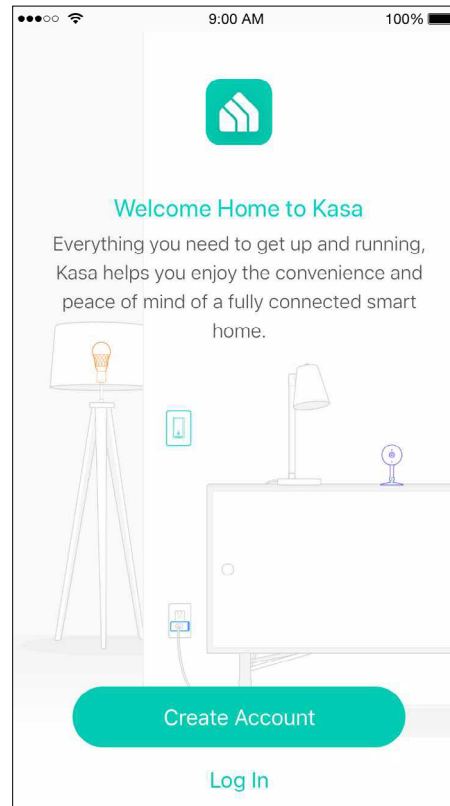
Step 1. Download Kasa

Get the [Kasa Smart](#) app from the Apple App Store or Google Play, or by scanning the QR code below.



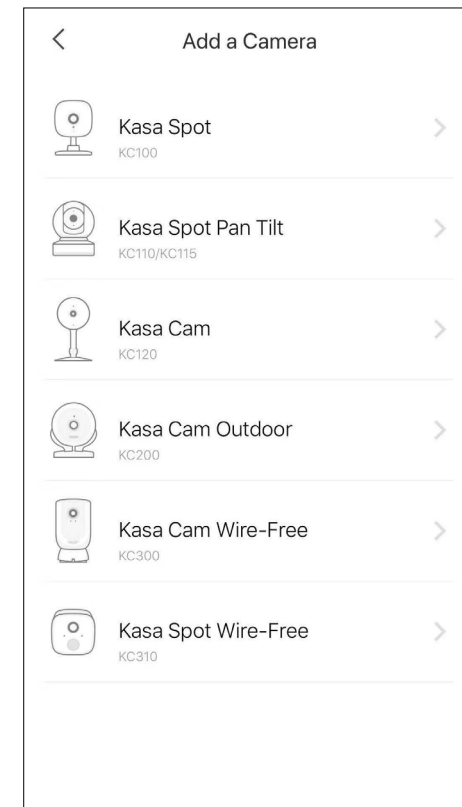
Step 2. Log In

Open the app, and log in with your TP-Link ID. If you don't have an account, create one first.



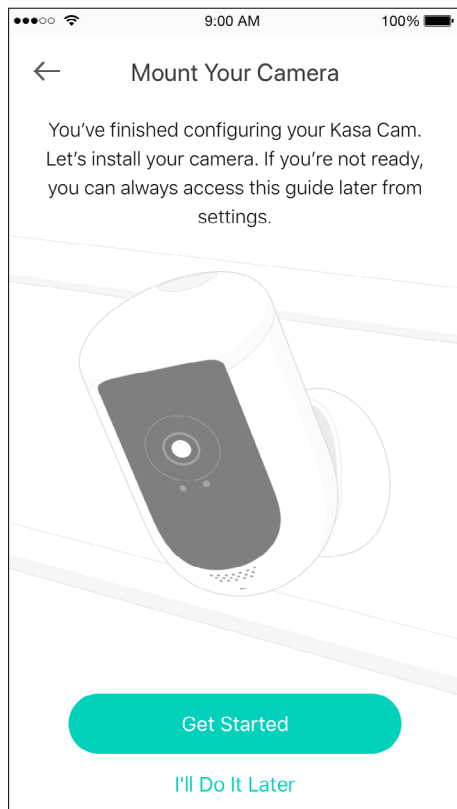
Step 3. Add Camera

Tap the \oplus button in the Kasa app, select [Add a Device](#), then select [Kasa Cam Wire-Free](#). Follow app instructions to add hub and cameras.



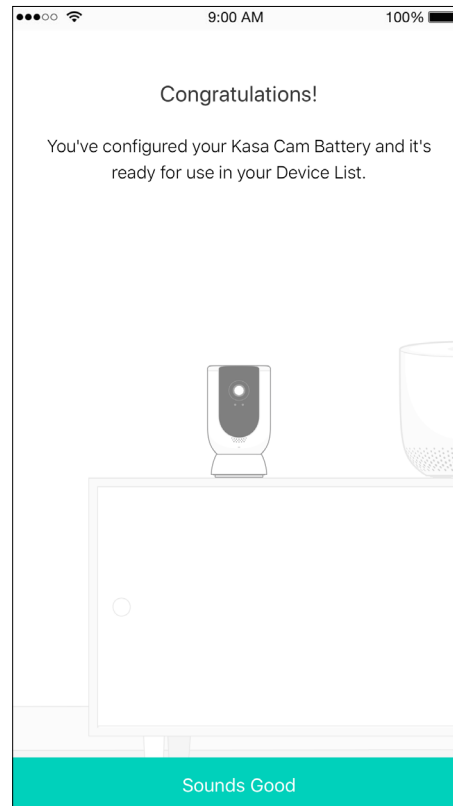
Step 4. Mount Camera

Follow mounting instructions in the app for ideal camera placement.



😊 Enjoy!

Your camera is ready for use in your device list.

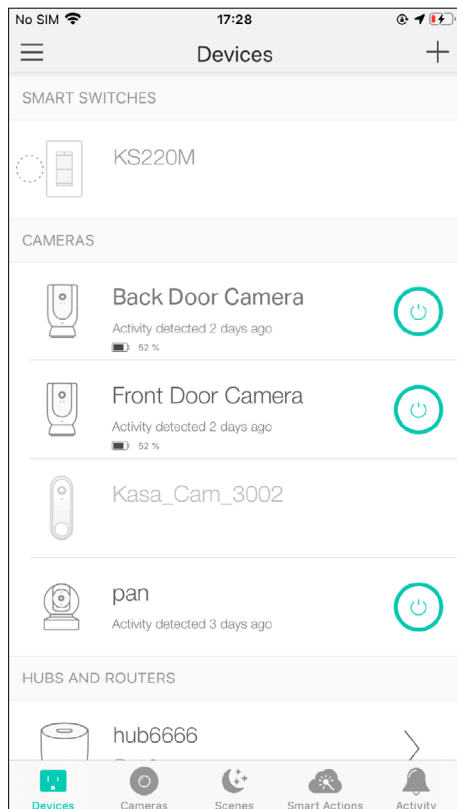


View Your Camera

After initial setup is complete, you can view your camera from anywhere.

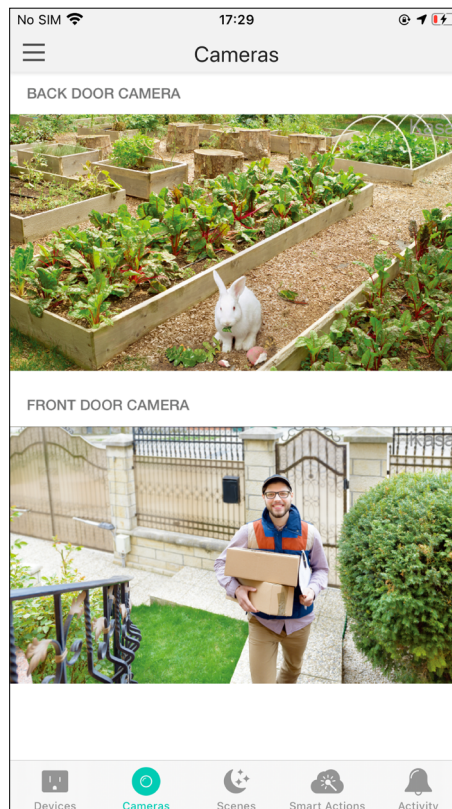
View Smart Devices List

Go to the [Devices](#) page, then you can view the list of all your cameras and any other smart devices if any.



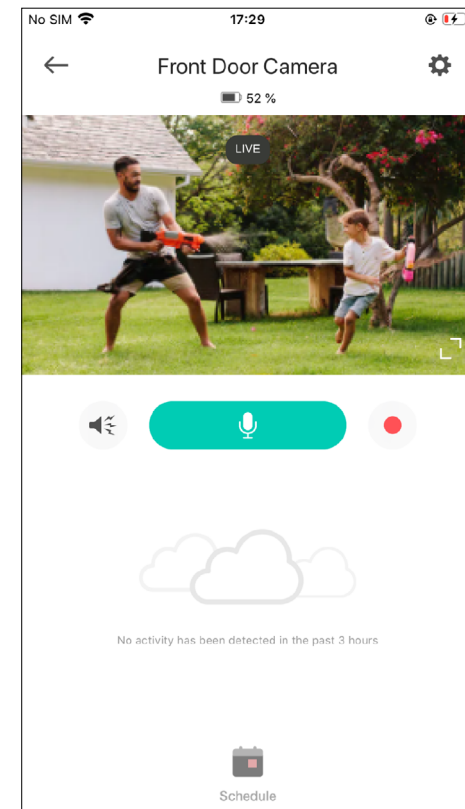
View Cameras List

Go to the [Cameras](#) page, then you can view the list of all your cameras.



View Live Video

Tap a camera on the [Devices](#) or [Cameras](#) page, then you can view the live video, talk to a person near the camera, sound the siren to scare away intruders, and more.

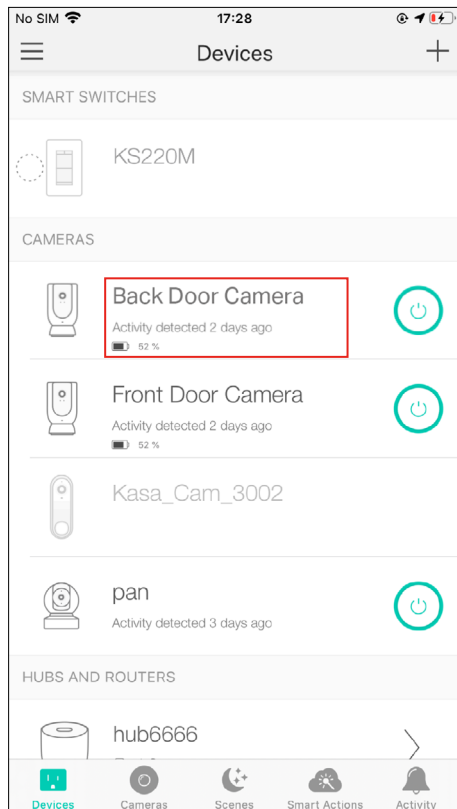


Check Battery Power

If you power up your camera with the battery, you can check battery power at the following pages.

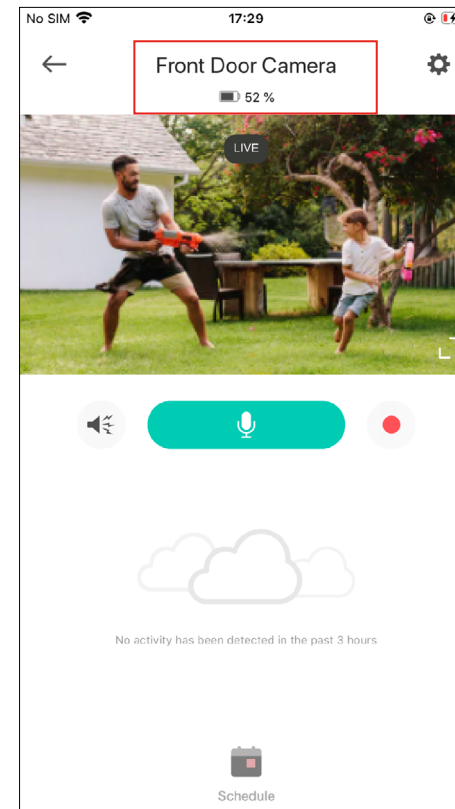
Check Battery Power on Devices Page

Go to the [Devices](#) page, battery power is listed below the the device name.



Check Battery Power on Live View Page


Tap your camera on the [Cameras](#) page to go to the [Live View](#) page. You can find the battery power below the device name.

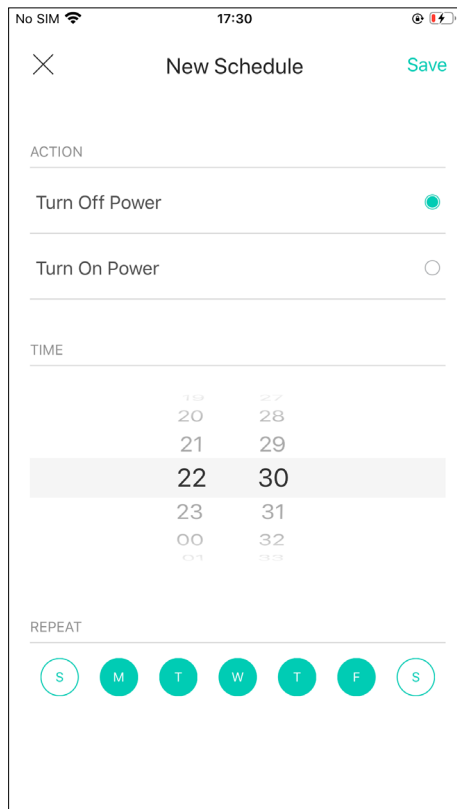


Configure Your Camera

On the live video page, you can configure your camera to meet various needs.


Set Schedule

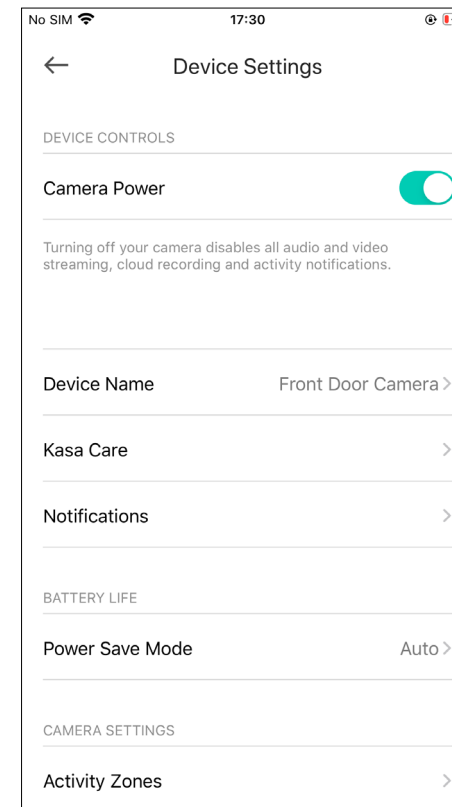
Tap  on the live video page, then you can schedule an automatic On/Off event for your camera to simplify your daily routine.



The 'New Schedule' screen is used to configure automatic On/Off events. It features a 'Save' button in the top right corner. The 'ACTION' section contains two options: 'Turn Off Power' (selected with a green dot) and 'Turn On Power' (unselected with a white dot). The 'TIME' section displays a calendar grid with the date 22 highlighted. The 'REPEAT' section shows a row of seven circular buttons representing the days of the week: S (Sunday), M (Monday), T (Tuesday), W (Wednesday), T (Thursday), F (Friday), and S (Saturday). The T (Tuesday) button is highlighted with a green background.

Change Camera Settings

Tap  on the live video page, then you can view and change camera settings.



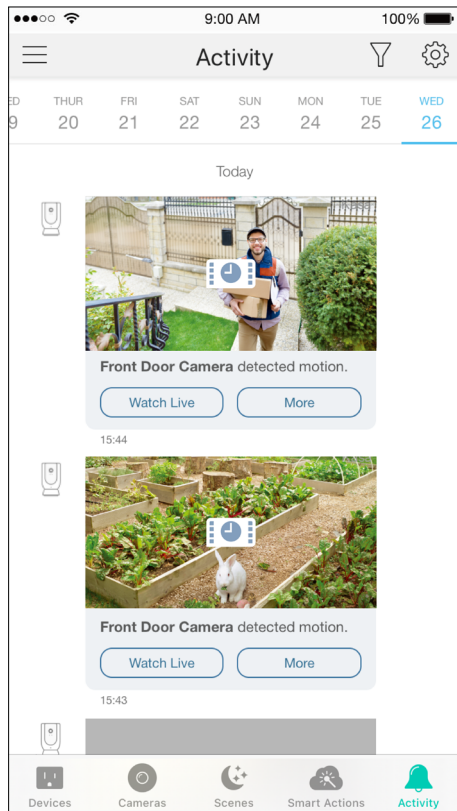
The 'Device Settings' screen allows users to configure various camera settings. It includes a back arrow in the top left corner. The 'DEVICE CONTROLS' section features a 'Camera Power' toggle switch, which is currently turned on (green). Below this, a note states: 'Turning off your camera disables all audio and video streaming, cloud recording and activity notifications.' The 'Device Name' is set to 'Front Door Camera' with a chevron icon for editing. Other settings include 'Kasa Care' and 'Notifications', both with chevron icons. The 'BATTERY LIFE' section shows 'Power Save Mode' set to 'Auto' with a chevron icon. The 'CAMERA SETTINGS' section includes 'Activity Zones' with a chevron icon.

Check Activities


When you receive an activity notification, you can check the live video immediately, or check the recordings at any time.

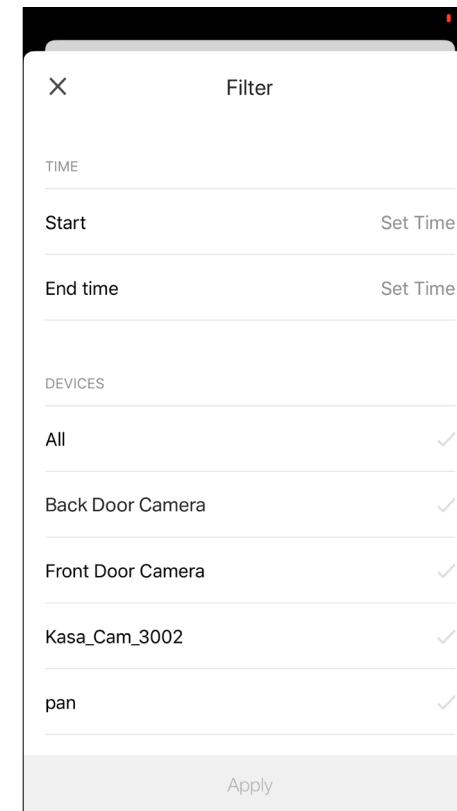
Check Activity History

Go to the [Activity](#) page, then you can view the activity clips that your camera records.



Filter Activity Clips

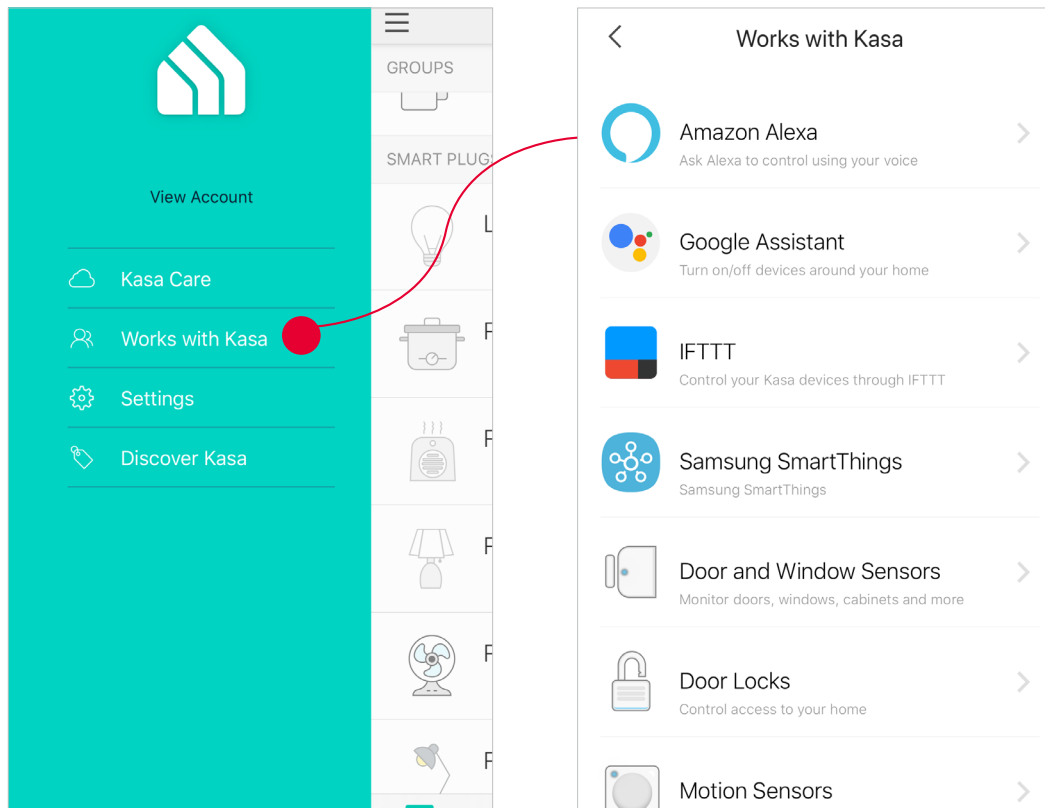
Tap  on the [Activity](#) page, then you can filter activity clips according to your needs.



Discover Kasa

Use the Kasa Smart app to pair your Smart Wi-Fi Power Strip with Amazon Alexa or Google Home Assistant, and enjoy a full hands-free experience. Kasa helps manage the rest of your smart home too, working with Samsung SmartThings to trigger changes when you arrive home or leave for the day.

Launch the **Kasa Smart** app. Go to the sidebar and tap **Works with Kasa**. You can choose [Amazon Alexa](#) / [Google Assistant](#) / [IFTTT](#) / [Samsung SmartThings](#) for detailed instructions.



Authentication

FCC compliance information statement



Product Name: Kasa Smart Wire-Free Camera

Model Number: KC300

KC300 Accessories: AC Power Adapter for Camera, Lithium Battery, Kasa Smart Camera Hub KH300 and its AC Power Adapter

Component Name	Model	FCC Identifier number
AC Power Adapter for Camera	S018BYU1200150	NA
Lithium Battery	KA300B	NA
Kasa Smart Camera Hub	KH300	TE7KH300
AC Power Adapter for Hub	ASM159A-1201000FU	NA

Responsible Party:

TP-Link USA Corporation

Address: 10 Mauchly, Irvine, CA 92618

Website: <https://www.tp-link.com/us/>

Tel: +1 626 333 0234

Fax: +1 909 527 6804

E-mail: sales.usa@tp-link.com

This equipment has been tested and found to comply with the limits for a Class B digital device, pursuant to part 15 of the FCC Rules. These limits are designed to provide reasonable protection against harmful interference in a residential installation. This equipment generates, uses and can radiate radio frequency energy and, if not installed and used in accordance with the instructions, may cause harmful interference to radio communications. However, there is no guarantee that interference will not occur in a particular installation. If this equipment does cause harmful interference to radio or television reception, which can be determined by turning the equipment off and on, the user is encouraged to try to correct the interference by

one or more of the following measures:

- Reorient or relocate the receiving antenna.
- Increase the separation between the equipment and receiver.
- Connect the equipment into an outlet on a circuit different from that to which the receiver is connected.
- Consult the dealer or an experienced radio/ TV technician for help.

This device complies with part 15 of the FCC Rules. Operation is subject to the following two conditions:

1. This device may not cause harmful interference.
2. This device must accept any interference received, including interference that may cause undesired operation.

Any changes or modifications not expressly approved by the party responsible for compliance could void the user's authority to operate the equipment.

Note: The manufacturer is not responsible for any radio or TV interference caused by unauthorized modifications to this equipment. Such modifications could void the user's authority to operate the equipment.

FCC RF Radiation Exposure Statement

This equipment complies with FCC RF radiation exposure limits set forth for an uncontrolled environment. This device and its antenna must not be co-located or operating in conjunction with any other antenna or transmitter.

"To comply with FCC RF exposure compliance requirements, this grant is applicable to only Mobile Configurations. The antennas used for this transmitter must be installed to provide a separation distance of at least 20 cm from all persons and must not be co-located or operating in conjunction with any other antenna or transmitter."

We, **TP-Link USA Corporation**, has determined that the equipment shown as above has been shown to comply with the applicable technical standards, FCC part 15. There is no unauthorized change is made in the equipment and the equipment is properly maintained and operated.

Issue Date: 2021-07-30

FCC compliance information statement**Product Name:** Kasa Smart Camera Hub**Model Number:** KH300**Responsible Party:****TP-Link USA Corporation**

Address: 10 Mauchly, Irvine, CA 92618

Website: <https://www.tp-link.com/us/>

Tel: +1 626 333 0234

Fax: +1 909 527 6804

E-mail: sales.usa@tp-link.com

This equipment has been tested and found to comply with the limits for a Class B digital device, pursuant to part 15 of the FCC Rules. These limits are designed to provide reasonable protection against harmful interference in a residential installation. This equipment generates, uses and can radiate radio frequency energy and, if not installed and used in accordance with the instructions, may cause harmful interference to radio communications. However, there is no guarantee that interference will not occur in a particular installation. If this equipment does cause harmful interference to radio or television reception, which can be determined by turning the equipment off and on, the user is encouraged to try to correct the interference by one or more of the following measures:

- Reorient or relocate the receiving antenna.
- Increase the separation between the equipment and receiver.
- Connect the equipment into an outlet on a circuit different from that to which the receiver is connected.
- Consult the dealer or an experienced radio/ TV technician for help.

This device complies with part 15 of the FCC Rules. Operation is subject to the following two conditions:

1. This device may not cause harmful interference.
2. This device must accept any interference received, including interference that may cause undesired operation.

Any changes or modifications not expressly approved by the party responsible for compliance could void the user's authority to operate the equipment.

Note: The manufacturer is not responsible for any radio or TV interference caused by unauthorized modifications to this equipment. Such modifications could void the user's authority to operate the equipment.

FCC RF Radiation Exposure Statement

This equipment complies with FCC RF radiation exposure limits set forth for an uncontrolled environment. This device and its antenna must not be co-located or operating in conjunction with any other antenna or transmitter.

"To comply with FCC RF exposure compliance requirements, this grant is applicable to only Mobile Configurations. The antennas used for this transmitter must be installed to provide a separation distance of at least 20 cm from all persons and must not be co-located or operating in conjunction with any other antenna or transmitter."

We, **TP-Link USA Corporation**, has determined that the equipment shown as above has been shown to comply with the applicable technical standards, FCC part 15. There is no unauthorized change is made in the equipment and the equipment is properly maintained and operated.

Issue Date: 2021-07-30

FCC compliance information statement

Product Name: AC Power Adapter for Camera / Lithium Battery / AC Power Adapter for Hub

Model Number: S018BYU1200150 / KA300B / ASM159A-1201000FU

Responsible Party:

TP-Link USA Corporation

Address: 10 Mauchly, Irvine, CA 92618

Website: <https://www.tp-link.com/us/>

Tel: +1 626 333 0234

Fax: +1 909 527 6804

E-mail: sales.usa@tp-link.com

This equipment has been tested and found to comply with the limits for a Class B digital device, pursuant to part 15 of the FCC Rules. These limits are designed to provide reasonable protection against harmful interference in a residential installation. This equipment generates, uses and can radiate radio frequency energy and, if not installed and used in accordance with the instructions, may cause harmful interference to radio communications. However, there is no guarantee that interference will not occur in a particular installation. If this equipment does cause harmful interference to radio or television reception, which can be determined by turning the equipment off and on, the user is encouraged to try to correct the interference by one or more of the following measures:

- Reorient or relocate the receiving antenna.
- Increase the separation between the equipment and receiver.
- Connect the equipment into an outlet on a circuit different from that to which the receiver is connected.
- Consult the dealer or an experienced radio/ TV technician for help.

This device complies with part 15 of the FCC Rules. Operation is subject to the following two conditions:

1. This device may not cause harmful interference.
2. This device must accept any interference received, including interference that may cause undesired operation.

Any changes or modifications not expressly approved by the party responsible for compliance could void the user's authority to operate the equipment.

We, **TP-Link USA Corporation**, has determined that the equipment shown as above has been shown to comply with the applicable technical standards, FCC part 15. There is no unauthorized change is made in the equipment and the equipment is properly maintained and operated.

Issue Date: 2021-07-30
20

Canadian Compliance Statement

This device contains licence-exempt transmitter(s)/receiver(s) that comply with Innovation, Science and Economic Development Canada's licence-exempt RSS(s). Operation is subject to the following two conditions:

1. This device may not cause interference.
2. This device must accept any interference, including interference that may cause undesired operation of the device.

L'émetteur/récepteur exempt de licence contenu dans le présent appareil est conforme aux CNR d'Innovation, Sciences et Développement économique Canada applicables aux appareils radio exempts de licence. L'exploitation est autorisée aux deux conditions suivantes :

1. L'appareil ne doit pas produire de brouillage;
2. L'appareil doit accepter tout brouillage radioélectrique subi, même si le brouillage est susceptible d'en compromettre le fonctionnement.

Radiation Exposure Statement:

This equipment complies with IC radiation exposure limits set forth for an uncontrolled environment. This equipment should be installed and operated with minimum distance 20cm between the radiator & your body.

Déclaration d'exposition aux radiations:

Cet équipement est conforme aux limites d'exposition aux rayonnements IC établies pour un environnement non contrôlé. Cet équipement doit être installé et utilisé avec un minimum de 20 cm de distance entre la source de rayonnement et votre corps.

Industry Canada Statement

CAN ICES-3 (B)/NMB-3(B)

Korea Warning Statements:

해당 무선설비는 운용중 전파혼신 가능성이 있음.

NCC Notice & BSMI Notice:

注意！

取得審驗證明之低功率射頻器材，非經核准，公司、商號或使用者均不得擅自變更頻率、加大功率或變更原設計之特性及功能。

低功率射頻器材之使用不得影響飛航安全及干擾合法通信；經發現有干擾現象時，應立即停用，並改善至無干擾時方得繼續使用。

前述合法通信，指依電信管理法規定作業之無線電通信。

低功率射頻器材須忍受合法通信或工業、科學及醫療用電波輻射性電機設備之干擾。

安全諮詢及注意事項

- 請使用原裝電源供應器或只能按照本產品注明的電源類型使用本產品。
- 清潔本產品之前請先拔掉電源線。請勿使用液體、噴霧清潔劑或濕布進行清潔。
- 注意防潮，請勿將水或其他液體潑灑到本產品上。
- 插槽與開口供通風使用，以確保本產品的操作可靠並防止過熱，請勿堵塞或覆蓋開口。
- 請勿將本產品置放於靠近熱源的地方。除非有正常的通風，否則不可放在密閉位置中。
- 不要私自拆開機殼或自行維修，如產品有故障請與原廠或代理商聯繫。

限用物質含有情況標示聲明書

設備名稱： Equipment name Kasa Smart Wire-Free Camera				型號（型式）： Type designation (Type) KC300		
產品元件名稱	限用物質及其化學符號					
	鉛 Lead (Pb)	汞 Mercury (Hg)	鎘 Cadmium (Cd)	六價鉻 Hexavalent chromium (Cr+6)	多溴聯苯 Polybrominated biphenyls (PBB)	多溴二苯醚 Polybrominated diphenyl ethers (PBDE)
PCB	○	○	○	○	○	○
外殼	○	○	○	○	○	○
電源適配器	—	○	○	○	○	○
鋰電池	○	○	○	○	○	○

備考 1. “超出 0.1 wt %” 及 “超出 0.01 wt %” 係指限用物質之百分比含量超出百分比含量基準值

Note 1: “Exceeding 0.1 wt %” and “exceeding 0.01 wt %” indicate that the percentage content of the restricted substance exceeds the reference percentage value of presence condition.

備考 2. “○” 係指該項限用物質之百分比含量未超出百分比含量基準值。

Note 2: “○” indicates that the percentage content of the restricted substance does not exceed the percentage of reference value of presence.

備考 3. “—” 係指該項限用物質為排除項目。

Note 3: The “—” indicates that the restricted substance corresponds to the exemption.

Safety Information & Warnings for Camera and Hub

Safety Information

- Keep the device away from water, fire, humidity or hot environments.
- Do not attempt to disassemble, repair, or modify the device.
- Do not use damaged charger or USB cable to charge the device.
- Do not use any other chargers than those recommended
- Do not use the device where wireless devices are not allowed.
- Adapter shall be installed near the equipment and shall be easily accessible.
- Do not disassemble, crush, puncture, short external contacts, or dispose of the battery in fire or water.
- CAUTION: RISK OF EXPLOSION IF BATTERY IS REPLACED BY AN INCORRECT TYPE. DISPOSE OF USED BATTERIES ACCORDING TO THE INSTRUCTIONS.
- Use only power supplies which are provided by manufacturer and in the original packing of this product. If you have any questions, please don't hesitate to contact us.

Please read and follow the above safety information when operating the device. We cannot guarantee that no accidents or damage will occur due to improper use of the device. Please use this product with care and operate at your own risk.

Warnings

- **Operating Temperature:**
KC300: -20 °C-45 °C (-4°F-113°F)

KH300: 0 °C-40 °C (32°F-104°F)

- **Operating Humidity:**

KC300: 10%-65%RH, Non-condensing

KH300: 10%-90%RH, Non-condensing

Handling Instructions for Lithium Ion Rechargeable Battery

Please read and follow the handling instructions for the battery before use. Improper use of the battery may cause heat, fire explosion, damage or capacity deterioration of the battery.

WARNING

- Do not place or leave the battery and equipment in the reach of infants so that they are not able to swallow or mistreat the battery by mistake.
In case of ingestion, consult with a doctor immediately.
- Do not let leaked electrolyte come into contact with eyes or skin.
In such a case, immediately wash the area of contact with clean water and seek help from a doctor.
If not treated soon, prolonged contact may cause serious injury.
- Do not put the battery into a fire. Do not use it or leave it in a place near fire, heaters, or high temperature sources.
In such a case, the insulator in the battery may be melted, the safety vent and structure may be damaged, or the electrolyte may catch fire, all of which may cause heat generation, explosion, or fire.
- Do not submerge the battery in water, or wet the battery.
If the protecting device assembled in the battery is damaged, the battery may be charged with an abnormal current and voltage and may cause a chemical reaction within the battery, which may result in the cause of heat generation, explosion, or fire of the battery.
- Do not use any battery charger not specified by the manufacture, also follow the charge conditions specified by the manufacture.
If the battery is charged under other conditions (a high temperature, a high voltage / current, or an altered charger) not specified by the manufacture, the battery may become over-charged with an excessive current and cause heat, explosion, or fire with abnormal chemical reactions.
- Do not use, charge, or leave the battery near fire or in a car under the blazing sun. Such a high temperature may cause damage of the protecting device in the battery, which may result in an abnormal reaction, and then heat generation, explosion, or fire.

- Do not connect the battery reversed in positive (+) and negative (-) terminals in the charger or equipment.
In case the battery is connected and charged reversely, it may cause heat generation, explosion, or fire due to an abnormal chemical reaction.
- Do not let the battery terminals (+ and -) contact a wire or any metal (like a metal necklace or a hairpin) with which it carried or stored together.
In such a case, the battery will be shorted and cause an excessive current, which may result in heat generation, explosion, or fire.
- Do not connect the battery directly to an electric outlet or cigarette heater socket in car.
With a high voltage applied, the battery may overheat, explode, or cause fire.
- Do not throw or drop the battery.
Strong impact may damage the protecting device, which may cause an abnormal chemical reaction during charging and result in heat generation, explosion, or fire of the battery.
- Do not drive a nail in, hit with a hammer, or stamp on the battery.
In such a case, the battery may be deformed and shorted, which may cause heat generation, explosion, or fire of the battery.
- Do not solder the battery directly.
Heat applied during soldering may damage the insulator of the safety vent and mechanism, which may result in heat generation, explosion, or fire of the battery.
- Do not disassemble or alter the battery.
The battery employs a safety mechanism and a protecting device in order to avoid any danger.
If these are damaged, heat, explosion or fire may be caused.

⚠ CAUTION

- Do not put the battery in a microwave or a pressure cooker.
Sudden heat may damage the seal of the battery and may cause heat generation, explosion, or fire of the battery.
- Do not use the battery with other maker's batteries, different types and / or models of batteries such as dry batteries, nickel-metal hydride batteries, or nickel-cadmium batteries, or new and old lithium ion batteries together.
In such a case, over-discharge during use, or over-charge during charge may occur abnormal chemical reactions and may cause heat generation, explosion, or fire of the battery.
- Do not leave the battery in a charger or equipment if it generates an odor and /or heat, changes color and / or shape, leaks electrolyte, or causes any other abnormality.

In such a case, immediately take the battery out of the charge or equipment and keep it away from fire, otherwise, the battery might overheat, explode, or cause fire.

- Discontinue charging after specified charging time even if the charge is not complete, otherwise, the battery might cause heat generation, explosion, or fire.
- Do not use the battery in the place where the static electricity (more than the limit of the manufacturer's guarantee) occurs. Otherwise, the protecting device in the battery might be damaged and cause heat generation, explosion, or fire.
- Do not use the battery in other than the following conditions; otherwise, the battery might cause heat generation, damage, or deterioration of its performance.

Operating environment:



When the battery is charged: 0°C ~ +45°C (Humidity < 80%)

When stored 1 months: -20°C ~ +50°C (Humidity < 80%)

When stored 3 months: -20°C ~ +45°C (Humidity < 80%)

When stored 1 year: -20°C ~ +20°C (Humidity < 80%)

Explanation of the symbols on the product label

Symbol	Explanation
	DC voltage
	<p>RECYCLING</p> <p>This product bears the selective sorting symbol for Waste electrical and electronic equipment (WEEE). This means that this product must be handled pursuant to European directive 2012/19/EU in order to be recycled or dismantled to minimize its impact on the environment.</p> <p>User has the choice to give his product to a competent recycling organization or to the retailer when he buys a new electrical or electronic equipment.</p>