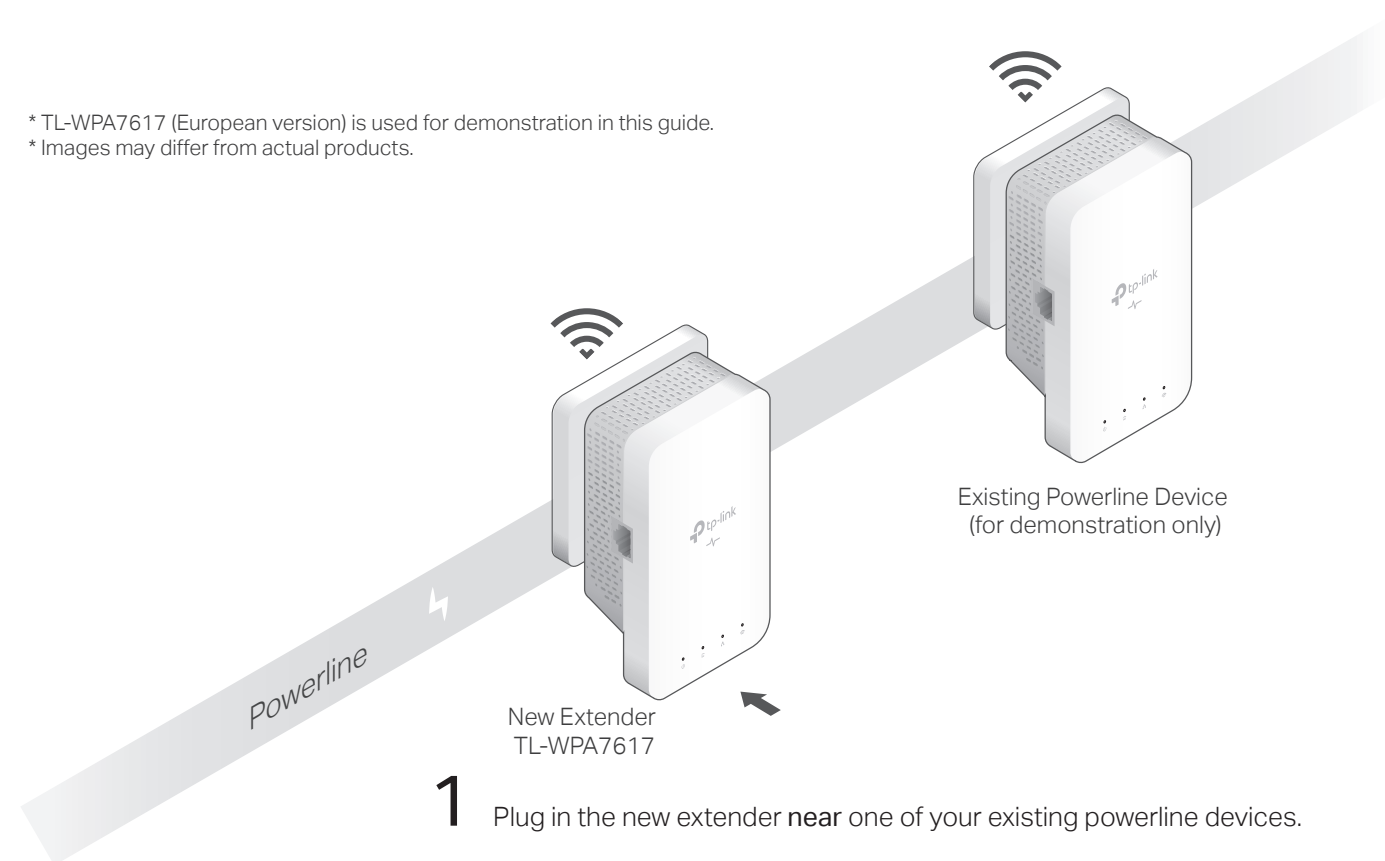


Quick Installation Guide

* TL-WPA7617 (European version) is used for demonstration in this guide.
* Images may differ from actual products.



1 Plug in the new extender **near** one of your existing powerline devices.

2 Check the new extender's Powerline LED . Is it on?

Yes > Step 4

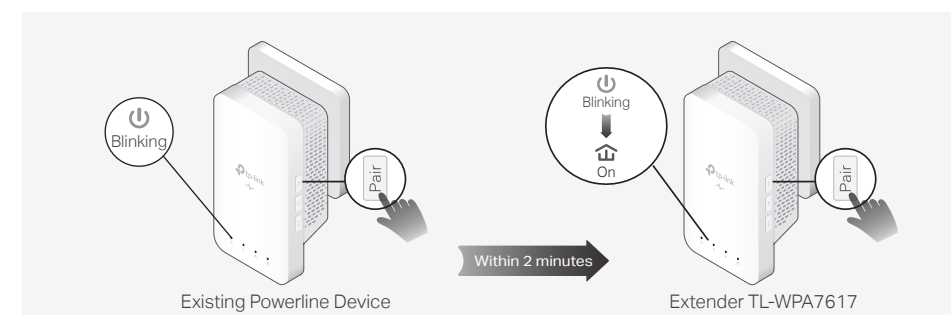
No > Step 3

3 Pair the powerline devices.

A Press the Pair button on the existing powerline device for 1 second. The Power LED starts blinking.

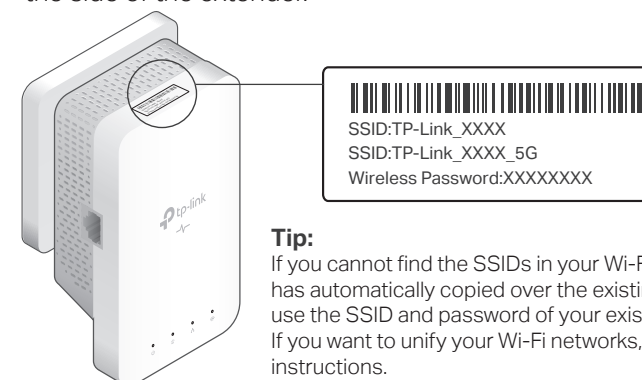
Note: If the Power LED does not blink, press the Pair button again.

B Within 2 minutes, press the Pair button on the new extender for 1 second. The Power LED starts blinking. When the Powerline LED on the new extender turns on, the pairing process is complete.



4 Enjoy!

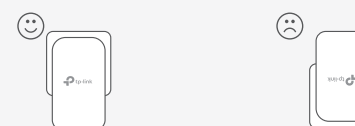
Relocate the extender to the Wi-Fi "dead" zone. Connect your devices to the internet using the default SSIDs (network name) and password on the label at the side of the extender.



Tip: If you cannot find the SSIDs in your Wi-Fi network list, your new extender has automatically copied over the existing wireless settings. In this case, use the SSID and password of your existing powerline network to connect. If you want to unify your Wi-Fi networks, refer to the back page for instructions.

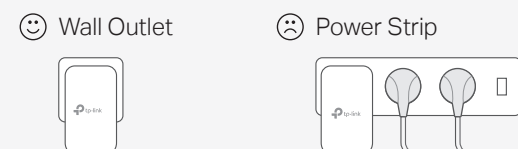
Attention

1. Use the product only in the upright direction.



2. Plug powerline devices into wall outlets instead of power strips.

Note: Using power strip will affect network performance or even cause connection drops.

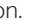



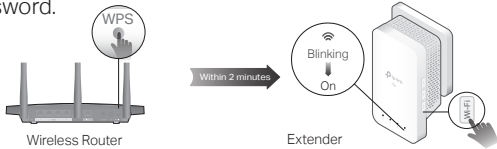
Unify Your Wi-Fi Networks

Copy SSID and password from your router via any of the methods below to create one unified Wi-Fi network throughout your home.
Note: If your router doesn't support the two methods below, refer to **Personalize Your Networks** section to manually change the extender's Wi-Fi settings.

Method ONE: Via Wi-Fi Button

Note: You can use this method when your router has a WPS button.

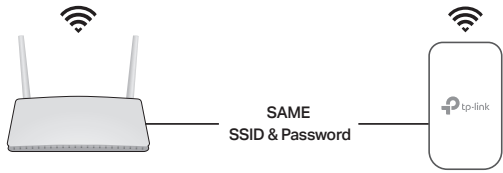
- 1 Plug in the extender in the same room as your router. Wait until the extender's Wi-Fi LED  turns on.
- 2 Press your router's WPS button. (Within 2 minutes) press the extender's Wi-Fi button for 1 second. The extender's Wi-Fi LED  starts blinking. When it stays on, Wi-Fi settings are copied.
Note: If Wi-Fi settings are not copied within 2 minutes, manually change the extender's Wi-Fi settings.
- 3 Relocate the extender and enjoy the internet using your router's SSID and password.



Method TWO: Via EasyMesh

Note: You can use this method when your router supports EasyMesh.

- 1 Connect your computer to the extender wirelessly. Visit <http://tplinkplc.net>.
- 2 Go to **EasyMesh** and enable it. Then the extender will automatically join an EasyMesh network and copy the wireless settings from the main router.
- 3 Enjoy the internet using your router's SSID and password. Any changes to the Wi-Fi settings of your router will be automatically copied to the extender.

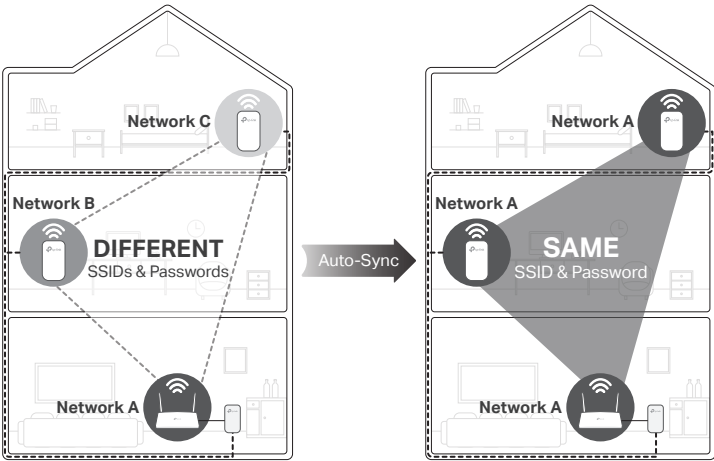


Sync Wi-Fi Settings to More Extenders

If you have paired your powerline devices, the Wi-Fi settings will automatically sync from the existing extender to the new one.

Note: For more extender models that support Wi-Fi Auto-Sync, visit <http://www.tp-link.com>.

If you personalize any extender with LED schedules or other Wi-Fi settings (such as Wi-Fi schedules and guest network), the settings will also automatically sync to other extenders in the secured powerline network.



Personalize Your Networks

Manage your powerline devices using any of the methods below. You can change the SSID and password, set Wi-Fi schedules, create a guest network and more.

tpPLC App

For easy management via your smartphone or tablet, download the app from Apple App Store or Google Play, or simply scan the QR code.



tpPLC Utility

For easy management via your computer, download the utility at <https://www.tp-link.com/support/download/>.

Note: For detailed instructions, refer to the utility manual on the product's Support page.

Web Interface

To access all settings, connect to an extender wirelessly and visit <http://tplinkplc.net>.

Note: For detailed instructions, refer to the product manual on the product's Support page.

EasyMesh-Compatible

You can experience strong, stable, and seamless wireless connections throughout your home with EasyMesh, a whole home mesh standard that works across different access points for ultimate flexibility.

•Seamless Roaming

Connects mobile devices to your routers or extenders that provide the best coverage. Devices compatible with EasyMesh also share a single Wi-Fi name so you stay connected in every room.

•Easy Setup and Management





Easily set up and manage a unified Mesh network.

•Flexible Scalability

Flexibly scale your home networking with different vendors,* different topologies, different Protocols and different product categories.

*TP-Link EasyMesh-compatible products can network with other devices that use EasyMesh. Failed connections may be due to firmware conflicts of different vendors. The EasyMesh-Compatible function is still being developed on some models and will be supported in subsequent software updates. This product is compatible with standardized EasyMesh technology but has not obtained the Wi-Fi EasyMesh certification. For more information, visit <https://www.tp-link.com/easymesh/>.

LEDs & Buttons

LED	STATUS	DESCRIPTION
	On	The powerline adapter/extender is on.
	Blinking	Pairing is in process.
	Off	The powerline adapter/extender is off.
	On	The powerline adapter/extender is connected to a powerline network.
	Off	The powerline adapter/extender is not connected to any powerline network.
	On/Off	The Ethernet port is connected or not connected.
	On	The wireless function is enabled.
	Blinking	The powerline extender is syncing wireless network settings.
	Off	The wireless function is disabled.

ITEM	DESCRIPTION
Pair/Reset Button	Press and hold for 1 second to set up or join a secure powerline network. Press and hold the Pair button for at least 6 seconds, then release the button to reset the adapter/extender to default settings.
Wi-Fi Button	Press for 1 second to start copying Wi-Fi settings from the router. Press and hold for about 5 seconds to turn Wi-Fi on or off.
LED Button	Press to turn on or off the LEDs.

Frequently Asked Questions

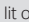
Q1. How do I reset my extender to factory default settings?

A. Press and hold the Pair button for at least 6 seconds. Release the button and all LEDs turn off. When the LEDs turn back on, the reset process is complete.

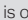
Q2. What should I do if the Powerline LED is off?



- A1. Try another wall socket and make sure all powerline devices are on the same service panel.
- A2. Try to set up a powerline network by pairing. Refer to the section above for instructions.
- A3. If the problem persists, contact our Technical Support.

Q3. What should I do if there is no internet connection in my powerline network?

- A1. Make sure all powerline devices are on the same service panel.
- A2. Make sure the Powerline LEDs  are lit on all of your powerline devices. If they are not, pair all devices again.
- A3. Make sure all devices are correctly and securely connected.
- A4. Check if you have an internet connection by connecting the computer directly to the modem or router.

Q4. What should I do if a successfully-paired extender does not reconnect after it is relocated?

- A1. Make sure all powerline devices are on the same service panel.
- A2. Try to pair the extender again, and make sure the Powerline LED  is on.
- A3. Check for possible interference due to a washing machine, air conditioner or other household appliances that may be too close to one of the powerline devices. Plug the appliance into the integrated electrical socket to remove the electrical noise if your powerline device has an integrated electrical socket.

 For technical support, replacement services, user guides, and other information, please visit <https://www.tp-link.com/support>, or simply scan the QR code.
 To communicate with TP-Link users or engineers, please join the TP-Link Community at <https://community.tp-link.com>.



TP-Link hereby declares that the device is in compliance with the essential requirements and other relevant provisions of directives 2014/53/EU, 2009/125/EC, 2011/65/EU and (EU)2015/863. The original EU Declaration of Conformity may be found at <https://www.tp-link.com/en/support/ce/>. TP-Link hereby declares that the device is in compliance with the essential requirements and other relevant provisions of the Radio Equipment Regulations 2017. The original UK Declaration of Conformity may be found at <https://www.tp-link.com/support/ukca/>.

Safety Information

- Keep the device away from water, fire, humidity or hot environments.
- Do not attempt to disassemble, repair, or modify the device. If you need service, please contact us.
- Do not use the device where wireless devices are not allowed.
- Plug the powerline devices directly into the wall outlets but not the power strips.

Please read and follow the above safety information when operating the device. We cannot guarantee that no accidents or damage will occur due to improper use of the device. Please use this product with care and operate at your own risk.