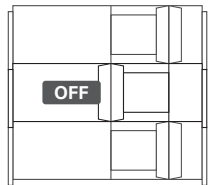
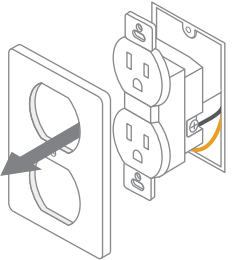


Wire Your Device (Before installing, prepare a Phillips and slotted screwdriver, pliers, wire strippers, and a non-contact voltage detector.)

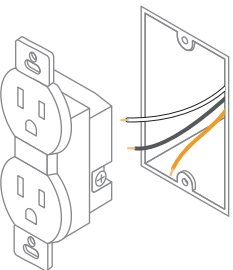
1 Turn off the circuit breaker. Use a voltage detector to ensure there is no power going to the outlet.



2 Remove the old outlet and gently pull it out.



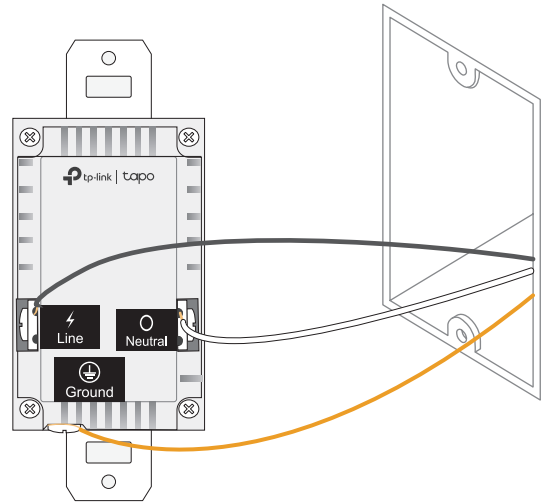
3 Identify the wires and disconnect the old ones.



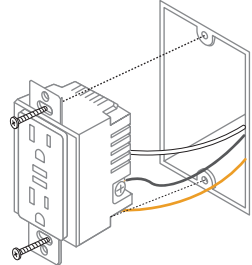
Neutral: Usually white.
Ground: Usually green or copper.
Line: Usually black and coming from the circuit breaker.

4 Connect the wires to the correct terminals of your new outlet as shown below. Follow the instructions on the product label or refer to your old outlet's wiring. If you are unsure, consult a qualified electrician.

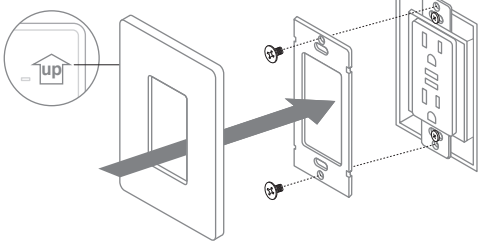
Note:
 Use **14 AWG** or larger wires. We recommend stripping the wires to 12 mm (0.47 in).



5 Line up the outlet with the mounting holes and secure it with the longer screws provided.



6 Secure the mounting bracket with the shorter screws provided. Ensure the **UP** arrow on the back of the wallplate points up, and then snap on the wallplate.



Set Up Your Device via Tapo

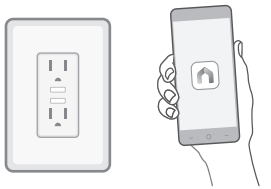
STEP 1 Download Tapo

Get the **Tapo** app from the App Store or Google Play, and log in.



STEP 2 Set Up

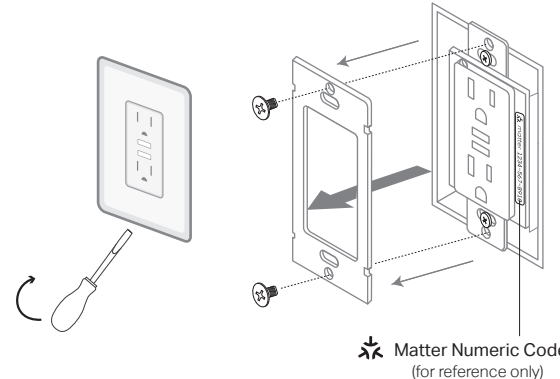
Tap the **+** button in the app. Select **Plugs** and then your model. Follow the step-by-step app instructions to set up your smart outlet.



Set Up Your Device via Matter

You can integrate your Tapo Matter device into your preferred ecosystem, such as Amazon Alexa, Apple Home, Google Home, and more.

Open your preferred smart home app and add the device via the Matter QR code on the label in the package. You can also find the Matter numeric code by detaching the wallplate and unscrewing its bracket.

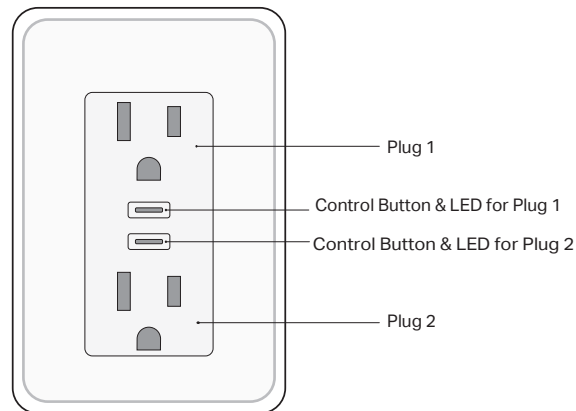


For more details and troubleshooting, please refer to the Matter QIG or visit: <https://www.tp-link.com/support/faq/3520/>

CAUTION!

1. **Risk of Electric Shock** - The product should be installed by a qualified electrician.
2. **High Voltage** - Disconnect power supply at the circuit breaker before servicing.
3. Use copper wire only.

Appearance



Control Button

- Press the corresponding button:
Turn on/off the plug.
- Press either of the two buttons for at least **5s**:
Reset the Wi-Fi while keeping all other settings.
- Press either of the two buttons for at least **10s**:
Restore the factory default settings.

LED Status

Blinking amber & green	Ready for setup; device resetting
Blinking green	Connecting to Wi-Fi
Solid green	Initializing; working properly
Blinking green slowly	Firmware upgrading
Blinking red	Disconnected from Wi-Fi
Solid amber	Disconnected from cloud

Supported Load Types

Load Type	Max Current	Max Power (at 125V~)
Iron	15 A	1875 W
Kettle	15 A	1875 W
Heater	15 A	1875 W
Toaster	15 A	1500 W
Coffee Maker	15 A	1200 W
Desk Lamp	1.2 A	80 W
TV	4 A	350 W
PC	7 A	600 W
Motor	4.4 A	367 W(1/2 HP)
Fan	4.4 A	367 W(1/2 HP)
Water Pump	4.4 A	367 W(1/2 HP)
Power Adapter/ USB Charger	2.4 A	200 W

Note:

1. Avoid plugging your appliances with a motor/compressor higher than 1/2 HP, such as an air conditioner. Frequent on/off switching may damage the compressor. You can check the motor/compressor value listed on your appliances or consult their customer support.
2. EV charging is not supported as it demands higher power and a charging current that surpasses the plug's rated capacity.

CAUTION

- High Voltage - Disconnect power supply at the circuit breaker before servicing.
- FOR INDOOR USE ONLY; USE ONLY IN DRY LOCATIONS.
- Timer could turn-on unexpectedly without the user being present. To Reduce Hazardous Condition – Unplug the appliance from the receptacle before servicing.

MISE EN GARDE

- Haute tension: débranchez l'alimentation électrique au niveau du disjoncteur avant l'utiliser.
- POUR UNE UTILISATION EN INTÉRIEUR UNIQUEMENT; UTILISER UNIQUEMENT DANS DES ENDROITS SECS.
- La minuterie pourrait s'allumer de manière inattendue sans la présence de l'utilisateur. Pour réduire les conditions dangereuses – Débranchez l'appareil de la prise avant l'entretien.

Safety Notice

Before installing, servicing, or removing the outlet, read and follow all safety precautions including the following:

- CAUTION – Risk of Electric Shock – More than one disconnect switch may be required to de-energize the equipment before servicing. A circuit breaker which disconnects the Line and Neutral conductor simultaneously is suitable. Ensure power is off at the circuit breaker before removing or installing any outlet. Use a non-contact voltage tester to ensure the power is off.
- CAUTION – Risk of Electric Shock - The product should be installed by a qualified electrician.
- The Smart Outlet must be installed and used in accordance with the National Electric Code (NEC) or your local electrical code.
- Do not install the Smart Outlet with wet hands or when standing on wet or damp surfaces.
- Install only in a suitable UL Listed outlet box (suitable dimensions: H > 2.95 in./75 mm, W > 1.81 in./46 mm, D > 3.15 in./80 mm).
- Tighten terminal screws to 13 lbf-in.



Need some help?

Visit <https://www.tapo.com/support/> for technical support, FAQs, warranty & more



Quick Start Guide

Tapo Smart Wi-Fi Outlet, Energy Monitoring