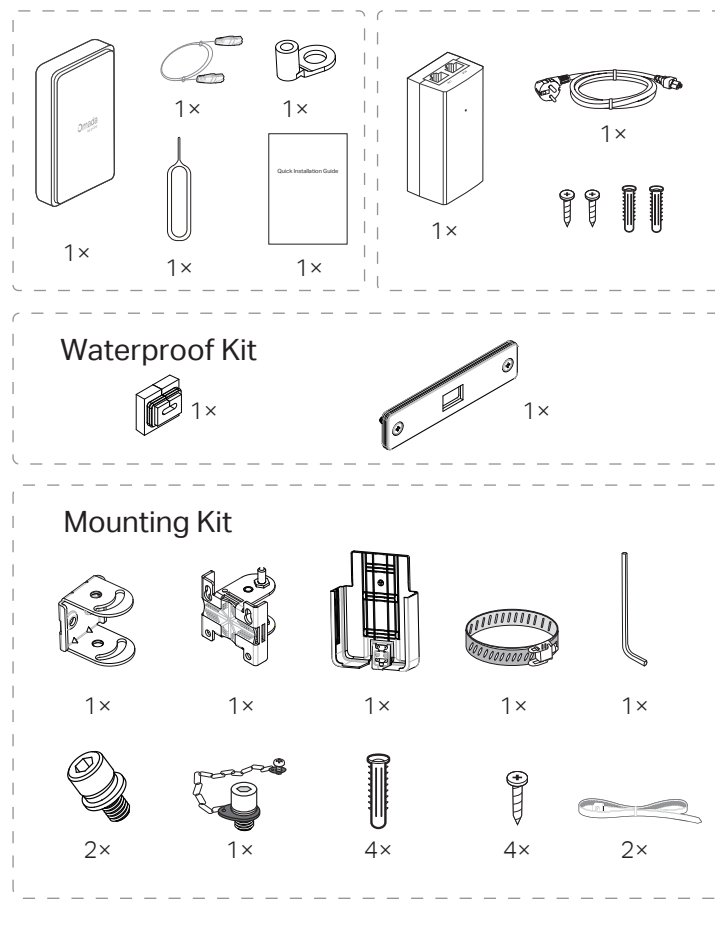


Package Contents

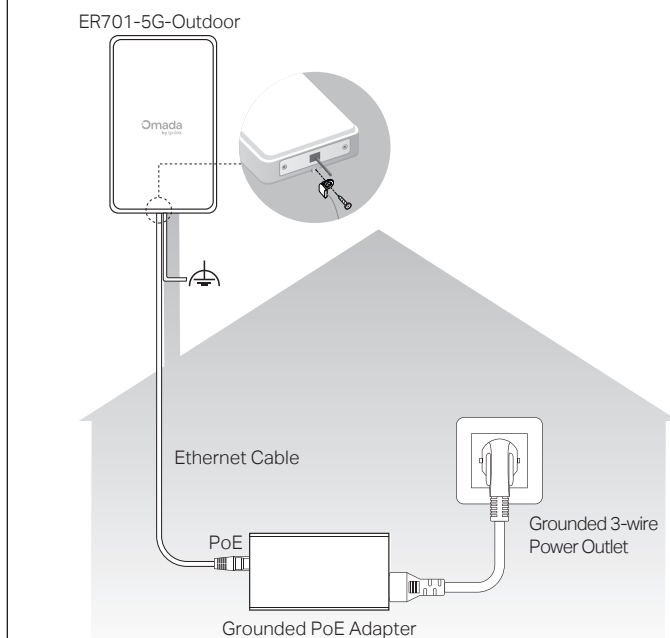


Lightning and ESD Protection

Before mounting the outdoor gateway, you should consider Lightning and ESD Protection to ensure safety.

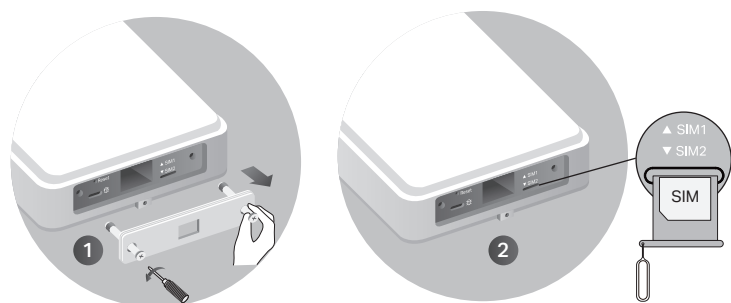
Proper grounding is extremely important for outdoor devices. To reduce the damage of potential lightning and ESD attacks, connect the grounding terminal to grounding facilities using a proper grounding wire, which should meet the local installation requirements.

Secure the grounding wire to the grounding terminal using pliers, then fasten the grounding terminal to the gateway with a screw.



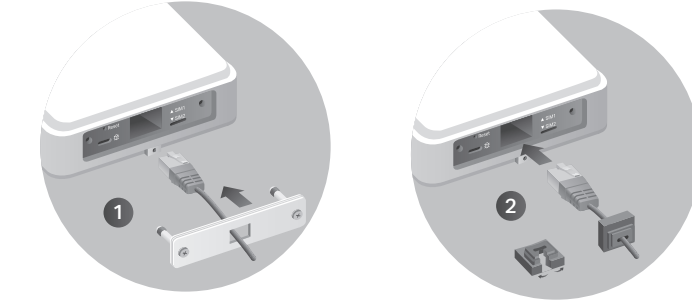
Getting Started

1 Install the SIM card

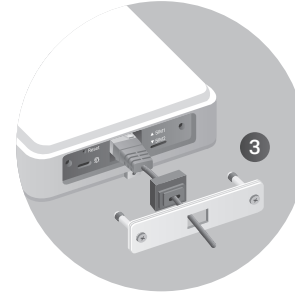


- 1 Loosen the screws and detach the **Waterproof Cover Plate**.
- 2 Insert the SIM-eject tool (or paperclip) into the small hole beside the SIM tray and push gently but firmly until the tray pops out. Put the Nano SIM card in the SIM slot on the tray with the contact area face down.
Note: You can insert two SIM cards, but only one is active for internet at a time while the other is used for network backup.

2 Connect the Ethernet cable



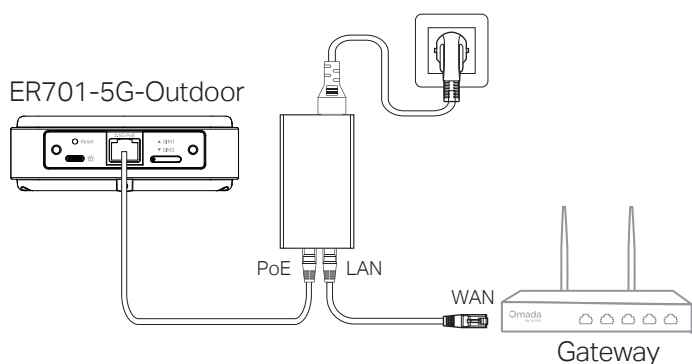
- 1 Thread the Ethernet cable through the middle slot of the **Waterproof Cover Plate**.
- 2 Fit the Ethernet cable through the **Rubber Stopper**'s slit and connect the cable to the port.
Note: The **wider side of the Rubber Stopper** should face the port.



- 3 Replace the **Waterproof Cover Plate**, leading the cable through the slot of the plate. Ensure that you align the Rubber Stopper to the Slot of the Waterproof Cover Plate.




3 Power on

Power on ER701-5G-Outdoor via the provided PoE adapter.*

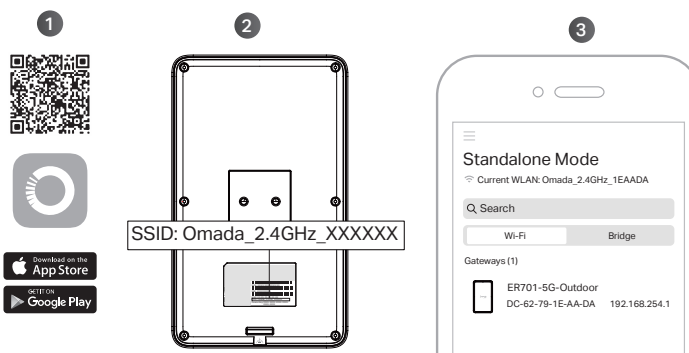


*The provided adapter is a Passive PoE adapter. If necessary, you can purchase an Omada Standard PoE adapter (e.g., POE260S).

4 Check the LED status

LED	Status	Indication
 Signal Strength	Green Yellow Red Off	The signal strength is above 75%. The signal strength is between 50% and 75%. The signal strength is below 50%. No mobile network signal.
 Network Type	Green Yellow Red Off	The device is on a 5G network. The device is on a 4G network. The device is on a 3G network. The device is not registered on the network.
 System	Flashing Slowly Flashing Quickly On/Off	System is running normally. The device is being reset. System is starting up or running abnormally.

5 Initial setup

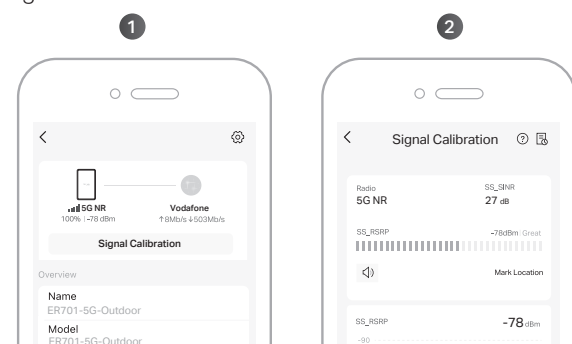


- 1 Download the TP-Link Omada app on your mobile device.
- 2 Connect your mobile device to the default wireless network name (SSID) printed on the label on the back of the gateway.
- 3 Launch the app and go to **Standalone Mode**. Then tap the gateway and follow the step-by-step instructions to complete the quick setup.

Mounting

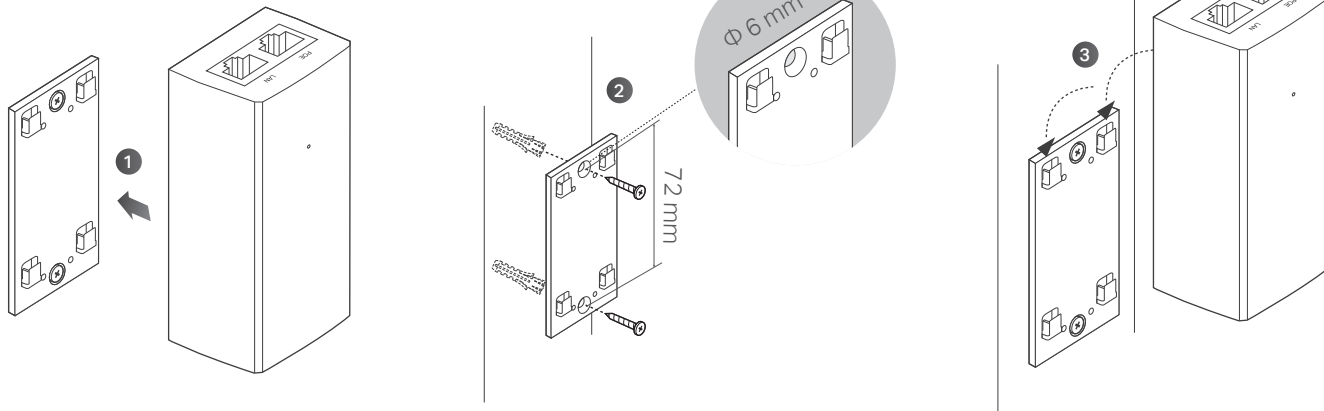
1 Find the optimal signal location

Before mounting the outdoor gateway, use the TP-Link Omada app to find the best signal location. Follow the quick setup or go to the Device's page to calibrate the signal.



2 Mount the PoE adapter

Note: This equipment shall be installed at a height of less than 2 meters.

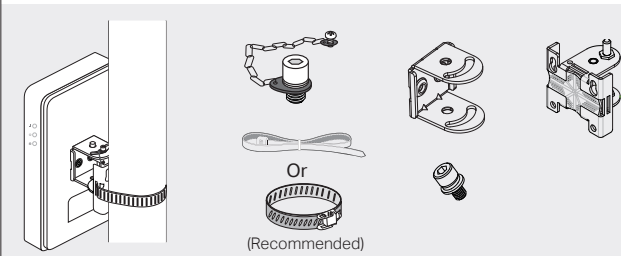


- 1 Remove the mounting bracket from the passive PoE adapter.
- 2 Install the bracket to the wall.
- 3 Secure the PoE adapter to the bracket by sliding the adapter in the direction of the arrows until it locks into place.

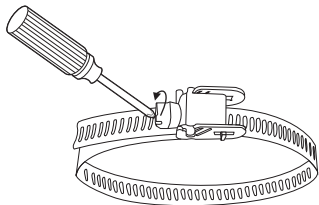
3 Mount the gateway

Option 1: Pole Mounting

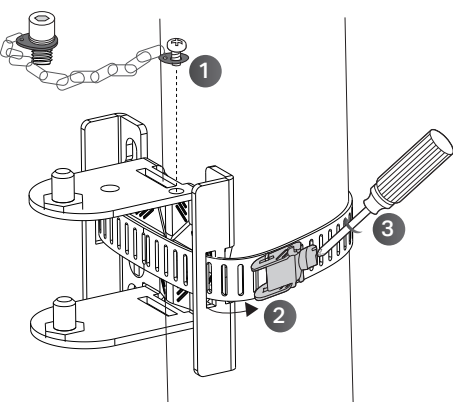
It is recommended to use the hose clamp for mounting. If the diameter of the pole is less than 30 mm, use the strap.



Step 1:

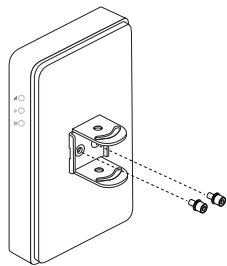


Step 2:

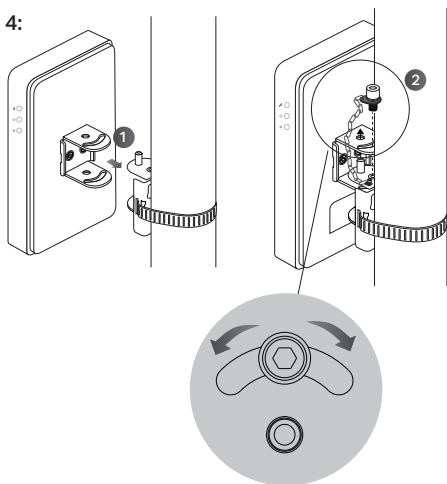


Note: You can attach the mounting bracket to a vertical or horizontal pole as desired.

Step 3:



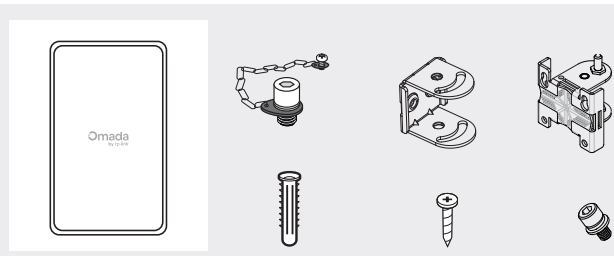
Step 4:



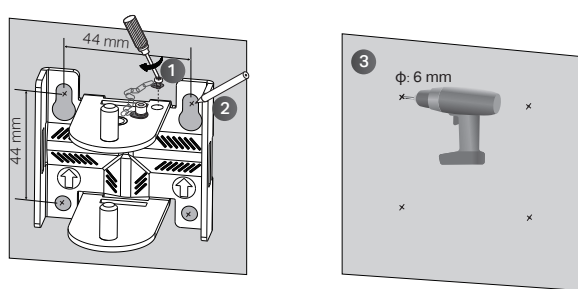
Note: The installation angle can be adjusted horizontally as needed with an adjustment range of approximately 90°.

The outdoor gateway can only be used in upright direction as shown in the image.

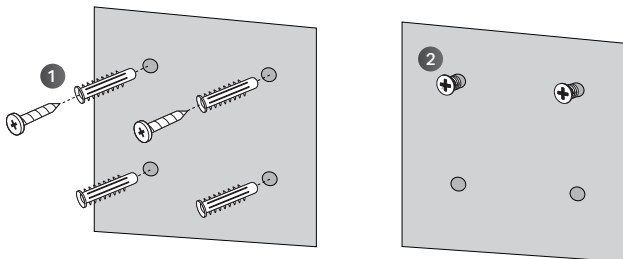
Option 2: Wall Mounting



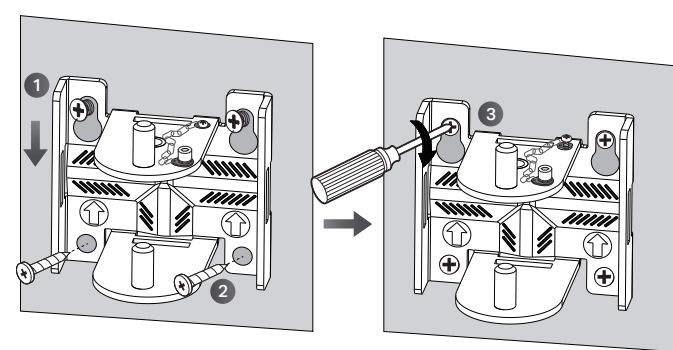
Step 1:



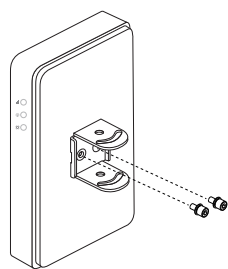
Step 2:



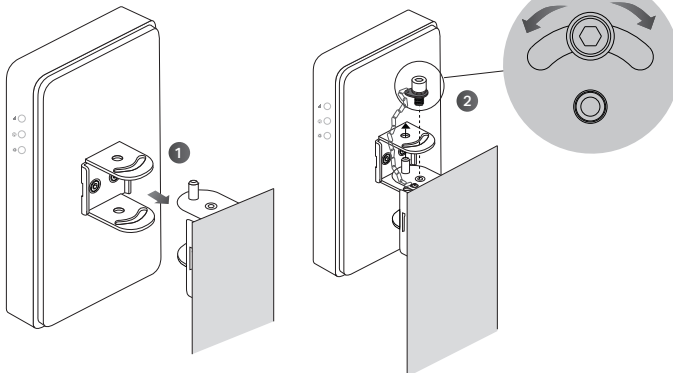
Step 3:



Step 4:



Step 5:

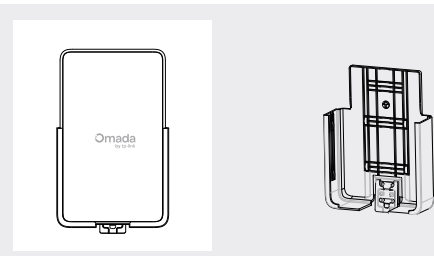


Note: The installation angle can be adjusted horizontally as needed, with an adjustment range of approximately 90°.

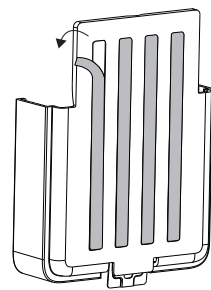
The outdoor gateway can only be used in upright direction as shown in the image.

Option 3: Window Mounting

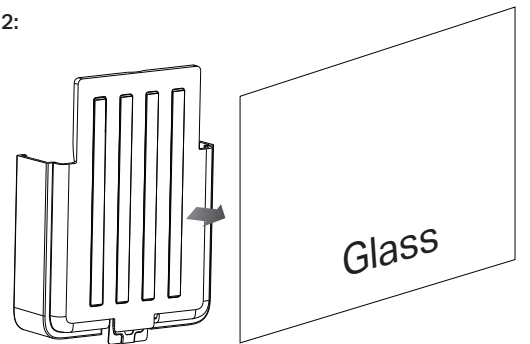
Note: This equipment shall be installed at a height of less than 2 meters.



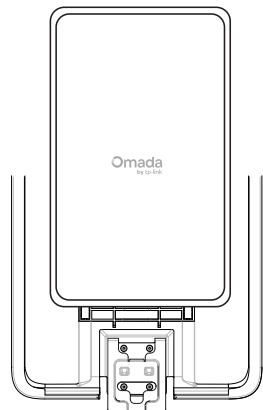
Step 1:



Step 2:



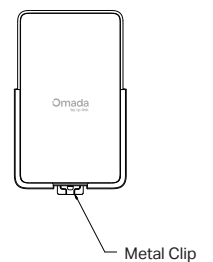
Step 3:



The outdoor gateway can only be used in upright direction as shown in the image.

Note:

If you want to remove the outdoor gateway from the mounting bracket, press and hold the metal clip at the bottom of the mounting bracket. Then push and slide the outdoor gateway up until it is removed.

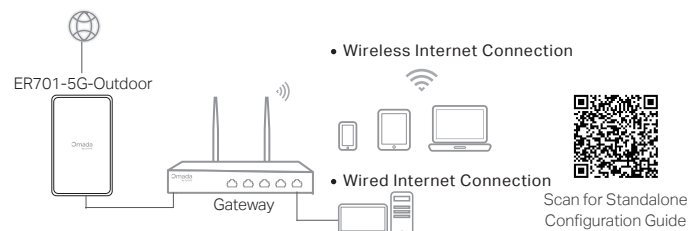


Tips for Window Mounting

- Avoid air bubbles by applying enough pressure for at least 30 seconds.
- Avoid mounting on a window during a wet or rainy day.
- Ensure that the mounting area of the glass is clean, flat, and dry (an area without ice, dust, oil, or separating agents is recommended).
- For best results, apply tape at temperatures between 21°C–38°C (70°F–100°F) and allow for a 72-hour bonding period. Avoid applying tape to surfaces below 10°C (50°F).

Management

- **Standalone Mode:** Configure and manage the gateway individually. To set up a standalone Omada gateway, scan the QR code or refer to <https://www.omadanetworks.com/support/faq/4097/>.

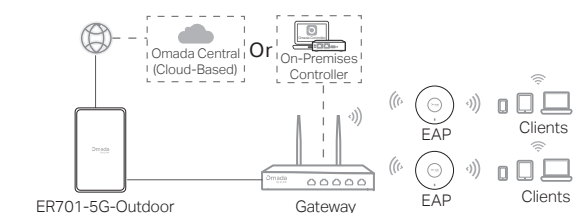


- **Controller Mode:** Configure and manage the network devices centrally.

- **Omada Central (Cloud-Based):** Recommended for remote control. Scan the QR code or visit <https://www.omadanetworks.com/support/faq/4452/> for details.



- **On-Premises Controller:** Locally install the software controller on a PC or purchase the hardware controller. Scan the QR code or visit <https://www.omadanetworks.com/support/faq/4453/> for details.



Safety Information

- Keep the device away from fire or hot environments. DO NOT immerse in water or any other liquid.
- Do not attempt to disassemble, repair, or modify the device. If you need service, please contact us.
- Do not use the device where wireless devices are not allowed.
- Adapter shall be installed near the equipment and shall be easily accessible.
- Do not use any other chargers than those recommended.
- Plug the adapter into the wall outlets with earthing connection through the power supply cord.
- The socket-outlet shall be installed near the equipment and shall be easily accessible.
- Adapter should be used indoors where the ambient temperature is 0°C to 40°C.
- This equipment can be powered only by equipments that comply with Power Source Class 2 (PS2) or Limited Power Source (LPS) defined in the standard of IEC 62368-1.

More Resources

Main Site	https://www.omadanetworks.com/
Video Center	https://support.omadanetworks.com/video/
Documents	https://support.omadanetworks.com/document/
Product Support	https://support.omadanetworks.com/product/
Technical Support	https://support.omadanetworks.com/contact-support/

Warranty

For details on the warranty period, policy, and procedures, visit <https://support.omadanetworks.com/warranty-services>.

Support

For technical support, user guides and other information, please visit <https://support.omadanetworks.com/>.

EU Declaration of Conformity
TP-Link hereby declares that the gateway is in compliance with the essential requirements and other relevant provisions of directives 2014/53/EU, 2009/125/EC, 2011/65/EU and (EU) 2015/863.
The original EU declaration of conformity may be found at <https://www.tp-link.com/en/support/ce/>
UK Declaration of Conformity
TP-Link hereby declares that the gateway is in compliance with the essential requirements and other relevant provisions of the Radio Equipment Regulations 2017.
The original UK declaration of conformity may be found at <https://www.tp-link.com/support/ukcal/>

