

Installation Guide

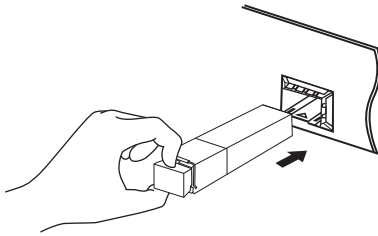
GPON ONU SFP Module

For technical support, replacement services, user guides and other information, please contact your Internet Service Provider, or visit <https://www.tp-link.com/support>.

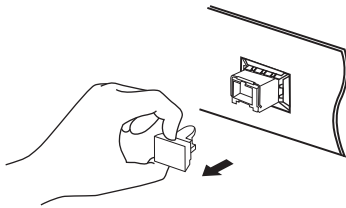
* Images may differ from actual products.

Install the Module

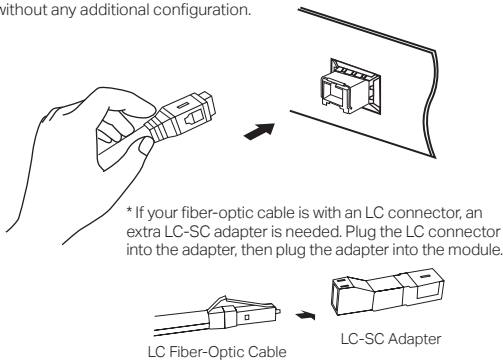
1. Wear an ESD-preventive wrist or ankle strap to prevent ESD damage to the module.
2. Insert the module into the SFP slot and firmly press it into place.



3. Remove the protective dust plug from the module.



4. Plug a fiber-optic cable into the module. Note that the module works without any additional configuration.



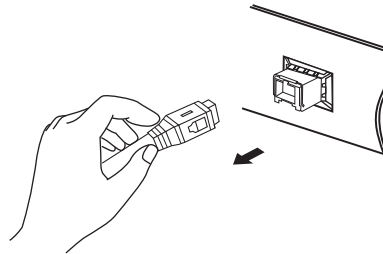
Note:

1. Do not touch the output pins on the module with your hand.
2. Always keep the protective dust plug on the module's optical bores until you are ready to make a connection.
3. The GPON SN can be found on the label on the surface of the module.

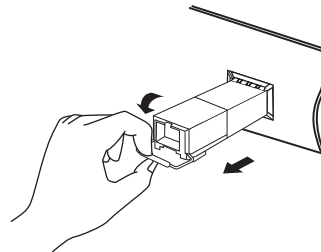
Caution: DO NOT point or stare directly into the beam or into the optical port of the module when it is operating, as this can injure your eyesight.

Remove the Module

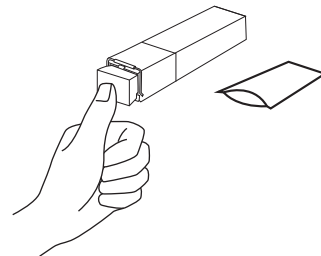
1. Wear an ESD-preventive wrist or ankle strap to prevent ESD damage to the module.
2. Disconnect the network fiber-optic cable from the module.



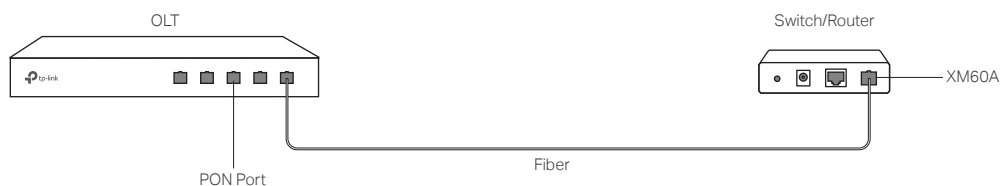
3. Pull the safety latch downwards to release the module, and then pull it out from the SFP slot.



4. Reinstall the protective dust plug in the module's optical bores and place it on antistatic mat or a static shielding bag.



Connection



Specifications

General Specifications

Model	XM60A
Wave Length	Tx: 1310 nm Rx: 1490 nm
Standards and Protocols	ITU-984.x, G.988
Cable	Single-mode Fiber
Fiber Type	9/125 um Single-mode
Max. Cable Length	20 km
Upstream Data Rate	1.244 Gbps
Downstream Data Rate	2.488 Gbps
Receiver Sensitivity	-28 dBm
Overload Power	-8 dBm
Port Type	SC-APC
Power Support	3.3 V
DDM	Yes
SFP-MSA	Yes
Hot Swappable	Yes

Safety Information

- Keep the device away from water, fire, humidity or hot environments.
- Keep the device away from fire or hot environments. DO NOT immerse in water or any other liquid.
- Do not attempt to disassemble, repair, or modify the device.
- Avoid using this product during an electrical storm. There may be a remote risk of electric shock from lightning.
- Do not point or stare directly into the beam or into the optical port of the module when it is operating, as this can injure your eyesight.



EU Declaration of Conformity

TP-Link hereby declares that the GPON ONU SFP Module is in compliance with the essential requirements and other relevant provisions of directives 2014/30/EU, 2014/35/EU, 2011/65/EU and (EU)2015/863.

The original EU declaration of conformity may be found at <https://www.tp-link.com/en/support/ce/>

UKCA Declaration of Conformity

TP-Link hereby declares that the GPON ONU SFP Module is in compliance with the essential requirements and other relevant provisions of the Electromagnetic Compatibility Regulations 2016 and Electrical Equipment (Safety) Regulations 2016.

The original UK declaration of conformity may be found at <https://www.tp-link.com/support/ukca/>