



Kasa Smart Light Bulb

Multicolor



KL130



Multicolor



No Hub
Required



Control From
Anywhere



Voice
Control



Auto
White

Highlights

Multicolor

Kasa Smart's Multicolour light bulb offers endless lighting possibilities to create the perfect ambiance from anywhere with a wide range of colours and dimming capabilities. Schedule your lights to change to your favourite teams' colours on game night or dim them to subtle reds and purples for a romantic dinner. Control your lights from anywhere using the Kasa Smart app or with simple voice commands via Google Assistant, Alexa or SmartThings.



*The app screen depicted is for visual reference only.

*Alexa, Google Assistant, and SmartThings are not available in all languages and countries.

Multi-scene

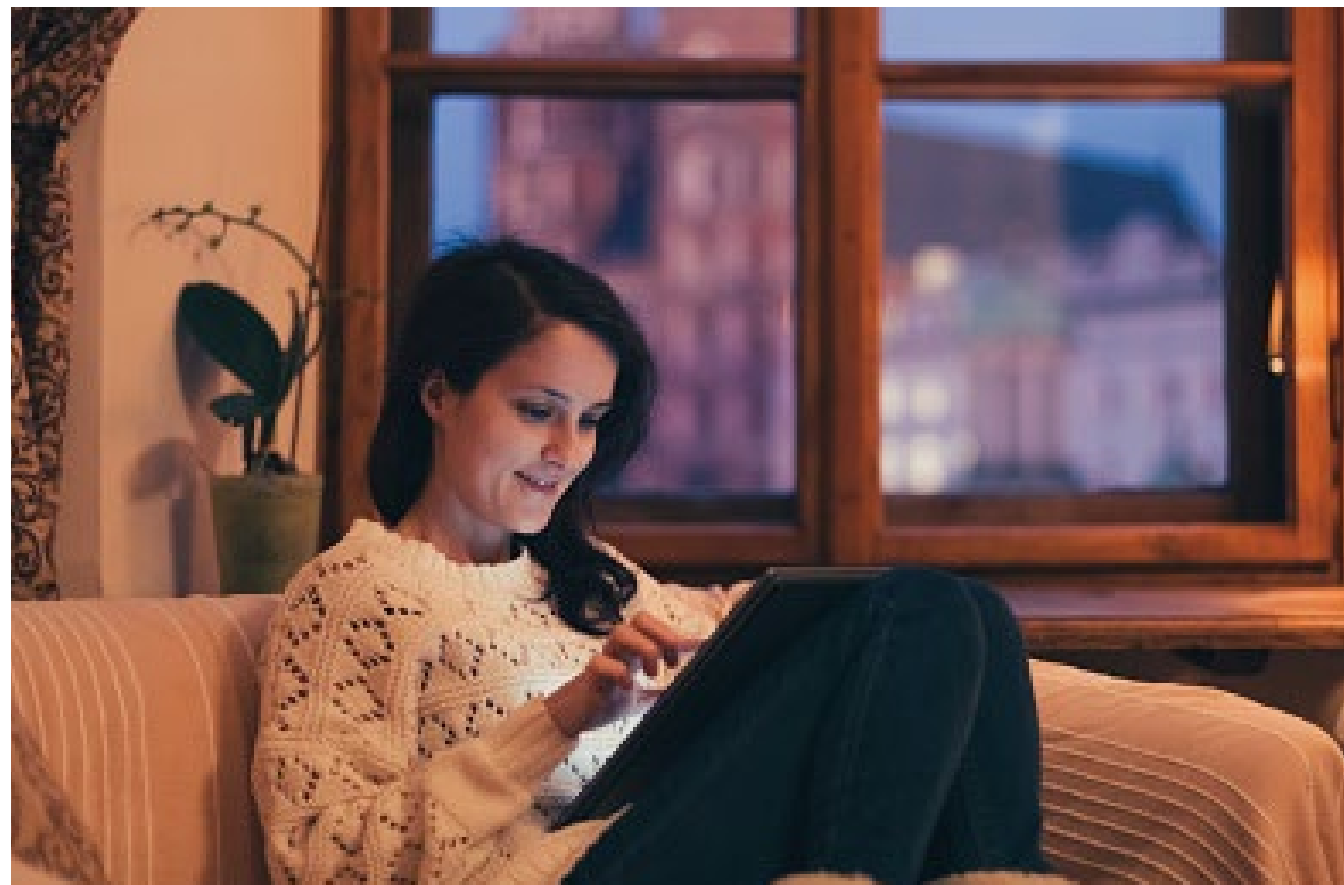
Create multiple scenes like theater scene, party scene or sleeping scene with different settings for various occasions, and tap yours when you want the light your way.



Highlights

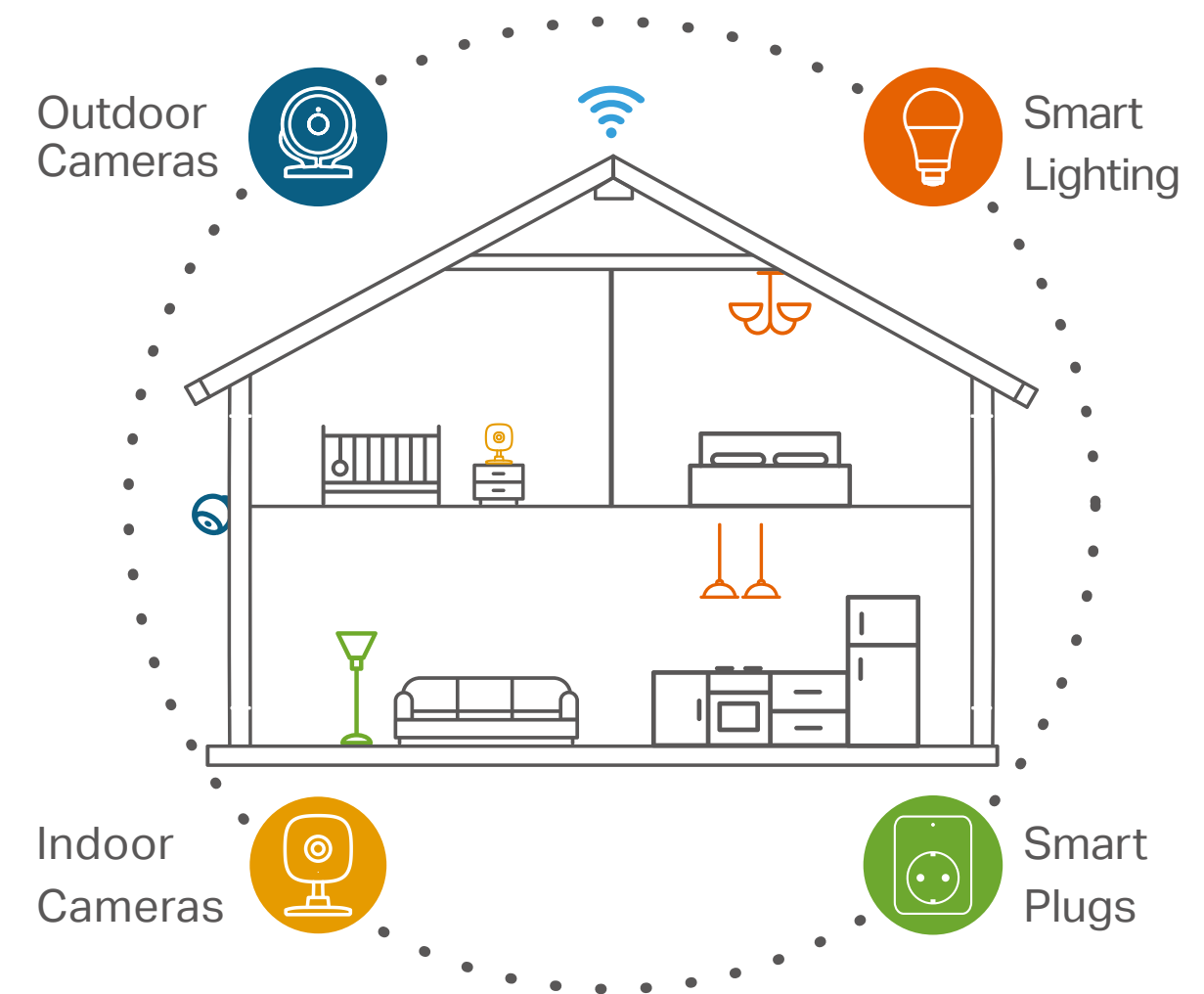
Schedules

Use your Kasa Smart app to schedule your light bulb to automatically switch on and off when you're home or away.



Your Home. One App.

Turn your home into a true smart home with Kasa Smart. Automate your lights and appliances with smart plugs and bulbs. Secure your home with Kasa cameras. Control it all from the Kasa Smart app.



Learn more at tp-link.com/smarthome

Features



Ease of Use

- No Hub Required – Connect to your home’s secure Wi-Fi network. No need for a hub or extra equipment
- Remote Control – Control your smart light bulb from anywhere with your smartphone using the free Kasa app
- Scheduling – Set schedules to turn on/off the smart bulbs at any chosen time for your convenience
- Multi-scene – Save your light settings as different scenes to enjoy instant access to them
- Smart Actions – With Smart Actions, your Kasa devices can work together to create a smarter smart home
- Grouping - Use Grouping to combine your Kasa devices with other Kasa Smart devices for seamless control with one single tap on your smartphone



Compatibility

- Works with Voice Assistants – Control smart bulbs using the leading voice assistants such as Amazon Alexa or Google Assistant
- Compatible with Android, iOS – The free Kasa app lets you run smart bulbs from any Android (5.0 and higher) or iOS (iOS 10 and higher) devices
- Works with SmartThings – Control and manage your Kasa devices with SmartThings



Lighting

- Multicolor – Choose a different color for any occasion
- Auto White – Set your bulb to automatically adjust its colour temperature to match natural light patterns from dawn to dusk
- Durable Bulb – Provide you stable and customized lighting for up to 22.8 years**

*60W equivalent

**Based on 3hrs/day

Specifications

Working Status

- Typical Lumen Output: 800 lm
- Input Power (Actual power draw in Watts): 9 W
- Color Temperature: 2500 K ~ 9000 K (adjustable via app and cloud)
- Rated Input Voltage: 220 -240 VAC, 50/60 Hz
- Beam Angle: 220 Degrees typical
- Switching Cycles: 15000
- Weighted Energy Consumption: 9 kWh / 1000 h
- Color Rendering Index: CRI ≥ 80
- Dimmable: Yes (via app and cloud only)
- Tunable: Yes (via app and cloud only)
- Color Changing: Yes (via app and cloud only)

Network

- Wi-Fi Protocol: IEEE 802.11 b/g/n
- Wi-Fi Frequency: 2.4 GHz
- Secured home Wi-Fi connection required
- Free Kasa Smart app and account required
- Compatible with regular light switches. Do not use with dimmers.

General

- Package Contents:
 - Kasa Smart Light Bulb
 - Quick Start Guide
- Lamp Base: A60 bulb, E27 fitting
- Weight: 0.304 lb (0.138kg)
- Dimensions: 2.36 x 4.76 in (60 x 121 mm)
- Certifications: CE, RoHS, SAA, RCM, ERP
- Energy Class: A+ (ERP 1.0), F (ERP 2.0*)
- Operating Temperature: -15 °C~ 40 °C (5 °F ~ 104 °F)
- Operating Humidity: 10%~90% RH, Non-condensing

*Why did I get two different energy labels with my product? <https://www.label2020.eu/the-new-label/double-labeling/>

Specifications are subject to change without notice. App Store is a service mark of Apple Inc. Google is a trademark of Google LLC. Amazon, Alexa and all related logos are trademarks of Amazon.com, Inc. or its affiliates. The Works with SmartThings words and logo are trademarks.

The increased weight may reduce the mechanical stability of certain luminaires and lampholders and may impair contact making and lamp retention. NOT FOR EMERGENCY LIGHTING

© 2022 TP-Link

www.tp-link.com