



AX3000 Whole Home Mesh Wi-Fi 6 System

Superior Mesh Wi-Fi, Everywhere

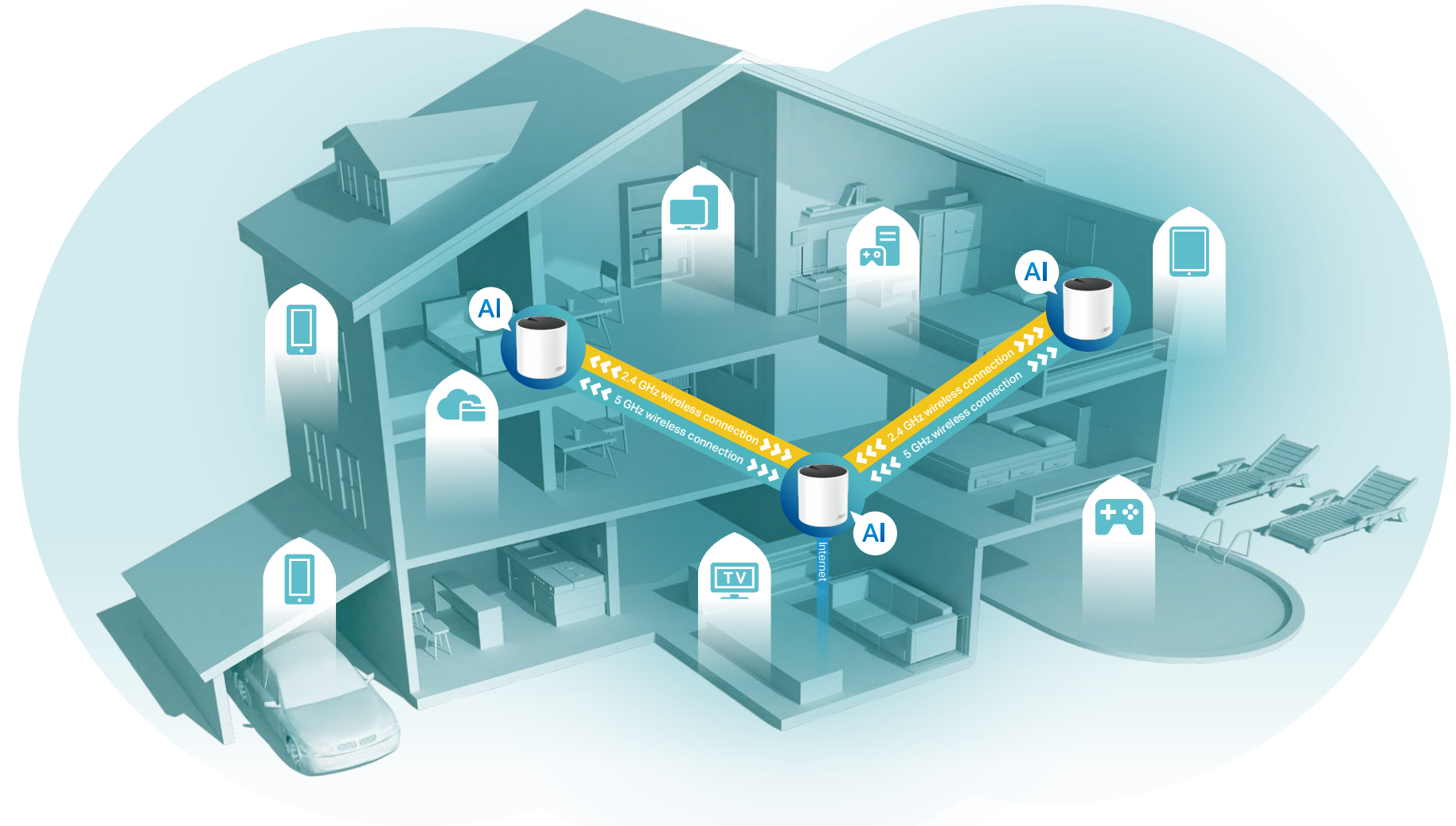
Deco X55



Highlights

AI-Driven Mesh, Customized Wi-Fi for You

Armed with AI-Driven Mesh technology, Deco X55 automatically learns and improves itself from experience. This provides the ideal mesh Wi-Fi unique to your home and network environment. Walk through your home and enjoy seamless streaming at the fastest possible speeds.



Improved Capacity for More Connections



Unrivaled Wi-Fi 6 Speed up to 3000 Mbps[†]



Immersive Streaming, No More Buffering



Wi-Fi Dead-Zone Killer

Eliminate weak signal areas with clearer, stronger whole home Wi-Fi generated from Wi-Fi 6. No more searching around for a stable connection.[^]



TP-Link HomeShield

TP-Link's premium security services keep your home network safe with cutting-edge features for network and IoT protection.*



Network Protection

Detect cyber threats to keep your privacy and connected devices well protected.



Parental Controls

Manage online time and block inappropriate content to keep families healthy online.



Quality of Service (QoS)

Prioritize your bandwidth needs to get a faster networking experience.



Comprehensive Reports

Gain full statistics and insights to help you know your home network better.



Seamless Roaming with One Wi-Fi Name

Deco units work together to form a unified network with a single network name. Walk through your home and stay connected with the fastest possible speeds.[‡]

Features



Wi-Fi Speed

Faster Wi-Fi speed with stronger whole home Wi-Fi generated from Wi-Fi 6

- Superior Wireless Speed – Combines wireless speeds up to 2402Mbps over 5 GHz, and 574 Mbps over 2.4 GHz
- OFDMA – Provides 4× greater capacity for more simultaneous connections
- More Devices Connected – Connects over 150 Devices[†]
- 1 GHz Dual-Core CPU – Helps accelerate wired and wireless transmission simultaneously to keep your connections fast and uninterrupted.

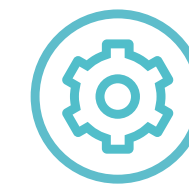


TP-Link HomeShield

TP-Link's premium security services keep your home network safe with cutting-edge features for network and IoT protection.[§]

- Network Protection – Detects cyber threats to keep your privacy and connected devices well protected
- Parental Controls – Manages online time and blocks inappropriate content to keep families healthy online
- Quality of Service (QoS) – Prioritizes your bandwidth needs to get a faster networking experience
- Comprehensive Reports – Gains full statistics and insights to help you know your home network better

Note: HomeShield includes the Free Basic Plan. Fees apply for the Pro Plan. Visit <https://www.tp-link/homeshield> for more information.



Easy Setup by Deco App

Easily set up Decos and find the ideal spot to place each unit

- Auto Connection Test – Tests the internet connection of your Decos and helps to identify a suitable location for them
- Remote Management – Manages your Deco network from a smartphone or tablet via the app, no matter where you find yourself
- Online Upgrade – Keeps informed of the latest firmware updates



Security

Safeguard your home network with a firewall and wireless encryption

- Encryption for Secure Network – WPA/WPA2/WPA3 encryptions provide active protection against security threats
- Firewall – Protects your network devices from malicious attacks
- Blocklist – Add specific devices to blocklist to protect your network from unauthorized users



Two Modes in One

Choose the Wireless Router mode or Access Point mode for your network needs

- Wireless Router Mode – Creates an instant private wireless network
- Access Point Mode – Creates Wi-Fi access for any existing wired network



Work with All Deco Models

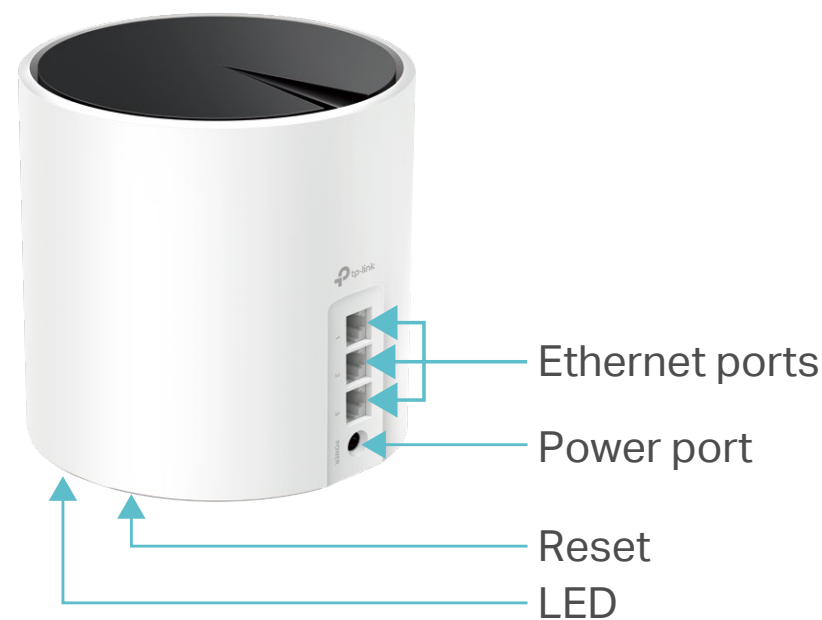
Form a Mesh network with your desired Deco models

- Compatible with All Deco Models – All Deco models can work together. Just expand Mesh Wi-Fi coverage anytime by adding more Decos
- Deco Mesh Technology – Eliminates dead zones and provides uninterrupted WiFi throughout your home

Specifications

Hardware

- Ethernet Port: 3 gigabit ports per Deco unit (WAN/LAN auto-sensing)
- Button: 1 RESET button on the underside
- Antenna: 2 internal antennas
- Power Consumption (with power adapter): 18.5W max
- Dimensions (W × D × H): 4.33 × 4.33 × 4.49 in (110 × 110 × 114 mm)
- Power Adapter Input: 100-240V ~ 50-60Hz 0.6A
- Power Adapter Output: 12V = 1.5A



Wireless

- Wireless Standards: IEEE 802.11a/n/ac/ax 5GHz[†], IEEE 802.11b/g/n/ax 2.4GHz
- Mesh protocol: 802.11k/v/r
- Frequency: 2.4GHz and 5GHz
- Signal Rate: 574 Mbps on 2.4GHz, 2402 Mbps on 5GHz
- Transmit Power: FCC: <30 dBm(2.4GHz), <30 dBm(5GHz)
- Wireless Security: WPA/WPA2-PSK/WPA3 encryptions

Software

- Working Mode: Router, Access Point
- WAN Type: Dynamic IP/Static IP/PPPoE/L2TP/PPTP
- DHCP: Server
- Quality of Service: WMM
- Firewall Security: SPI Firewall
- Protocols: Supports IPv4 and IPv6
- Guest Network: 2.4GHz Guest Network×1, 5GHz Guest Network×1
- Features: Parental Controls, QoS (Quality of Service), Reporting, Assisted Setup, Address Reservation, Port Forwarding, TP-Link DDNS, IPTV, IPv6, LED Control
- Management: Local Management; Remote Management; Multi-Managers

Others

- Certification: FCC, RoHS
- Environment:
 - Operating Temperature: 0°C~40°C (32°F~104°F)
 - Storage Temperature: -40°C~60°C (-40°F~140°F)
 - Operating Humidity: 10%~90%
 - Storage Humidity: 5%~90%
- Package Contents for Deco X55(1-pack):
 - 1 Deco X55 unit
 - 1 RJ45 Ethernet cable
 - 1 Power adapter
 - 1 Quick Installation Guide
- Package Contents for Deco X55(2-pack):
 - 2 Deco X55 units
 - 1 RJ45 Ethernet cable
 - 2 Power adapters
 - 1 Quick Installation Guide
- Package Contents for Deco X55(3-pack):
 - 3 Deco X55 units
 - 1 RJ45 Ethernet cable
 - 3 Power adapters
 - 1 Quick Installation Guide

Attention: This device may only be used indoors in Great Britain.

Attention: This device may only be used indoors in all EU member states, EFTA countries and Northern Ireland.

This device complies with part 15 of the FCC Rules. Operation is subject to the following two conditions: (1) This device may not cause harmful interference, and (2) this device must accept any interference received, including interference that may cause undesired operation.

Specifications are subject to change without notice. All the brands and product names are trademarks or registered trademarks of their respective holders.

[†]Maximum wireless signal rates are the physical rates derived from IEEE Standard 802.11 specifications. Actual wireless data throughput and wireless coverage, and quantity of connected devices are not guaranteed and will vary as a result of network conditions, client limitations, and environmental factors, including building materials, obstacles, volume and density of traffic, and client location.

[‡]Clients need to support 802.11k/v/r and may require additional set up. Performance may vary depending on the client device.

[§]Use of Wi-Fi 6 and other features including OFDMA, MU-MIMO, 1024-QAM, HT160, BSS Color require clients to also support the corresponding features. HT160 may be unavailable in the 5 GHz band in some regions/countries due to regulatory restrictions.

[¶]HomeShield includes the Free Basic Plan. Fees apply for the Pro Plan. Visit tp-link.com/homeshield for more information.

©2021 TP-Link

www.tp-link.com

TP-Link AX3000 Whole Home Mesh Wi-Fi 6 System Deco X55