



EasyMesh  
— Compatible —

# AC1200 Dual Band Wi-Fi Router

Four Antennas for Faster AC  
Wi-Fi and Greater Coverage



Archer A5



Dual-Band Wi-Fi  
867 Mbps + 300  
Mbps<sup>†</sup>



Router/ Access Point /  
Range Extender Multiple  
Modes



EasyMesh-Compatible  
for Seamless Wi-Fi<sup>△</sup>



Faster Wi-Fi  
with MU-MIMO<sup>‡</sup>

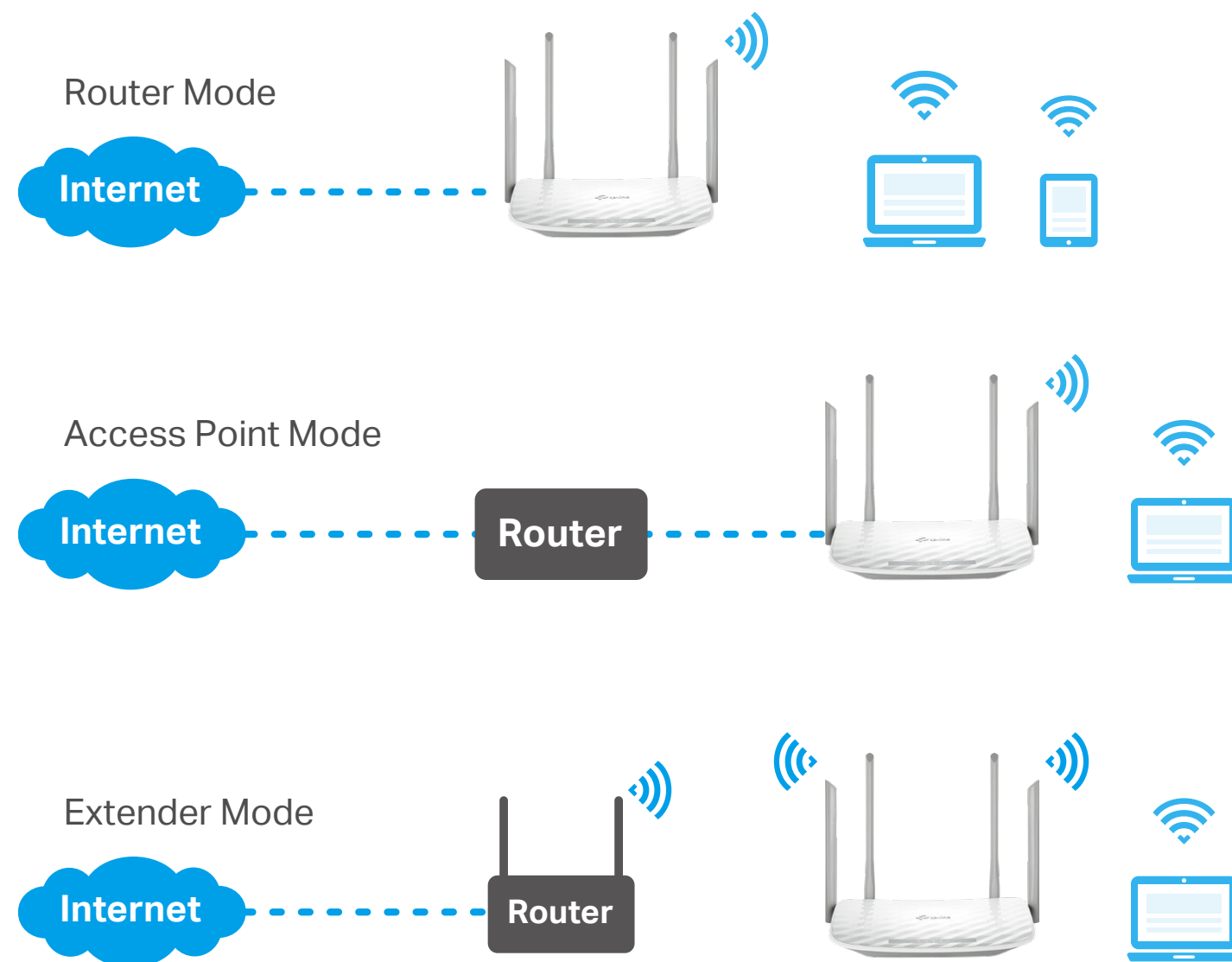


WPA3  
Security<sup>§</sup>

# Highlights

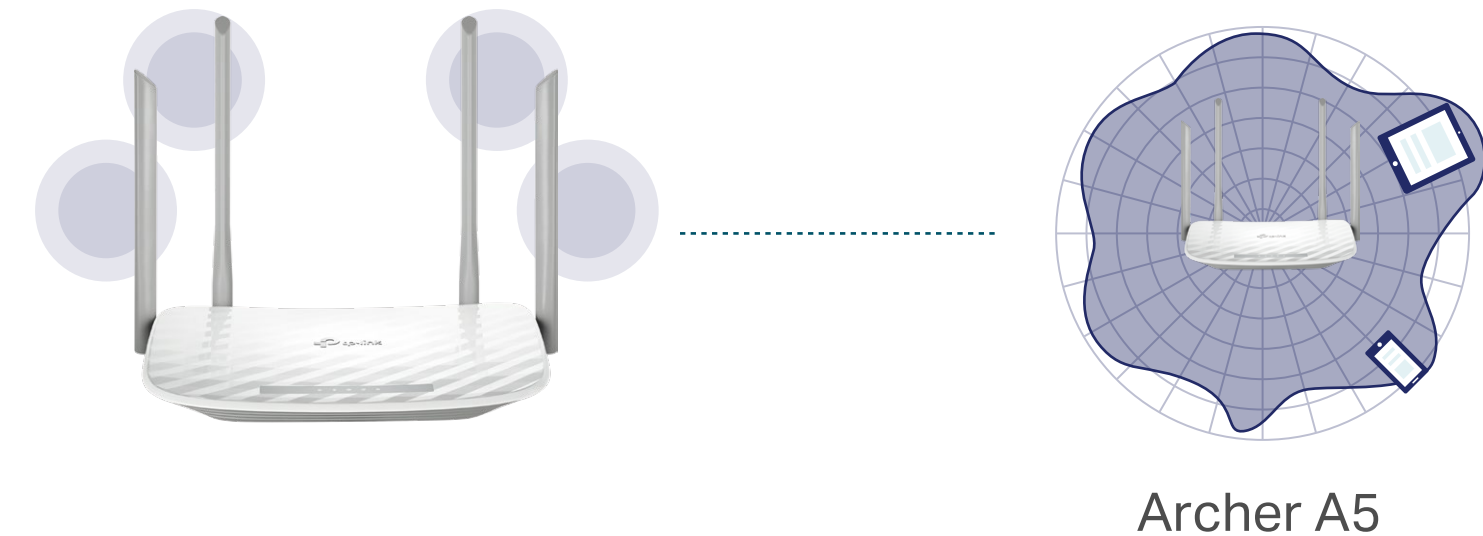
## Multi-Mode Function

In addition to serving as a wireless router, this router can also function as a wireless access point or range extender, providing you with the flexibility you need in any situation. The mode can be easily setup in the web management page or Tether App.



## 4 Antennas & Beamforming for Maximum Coverage

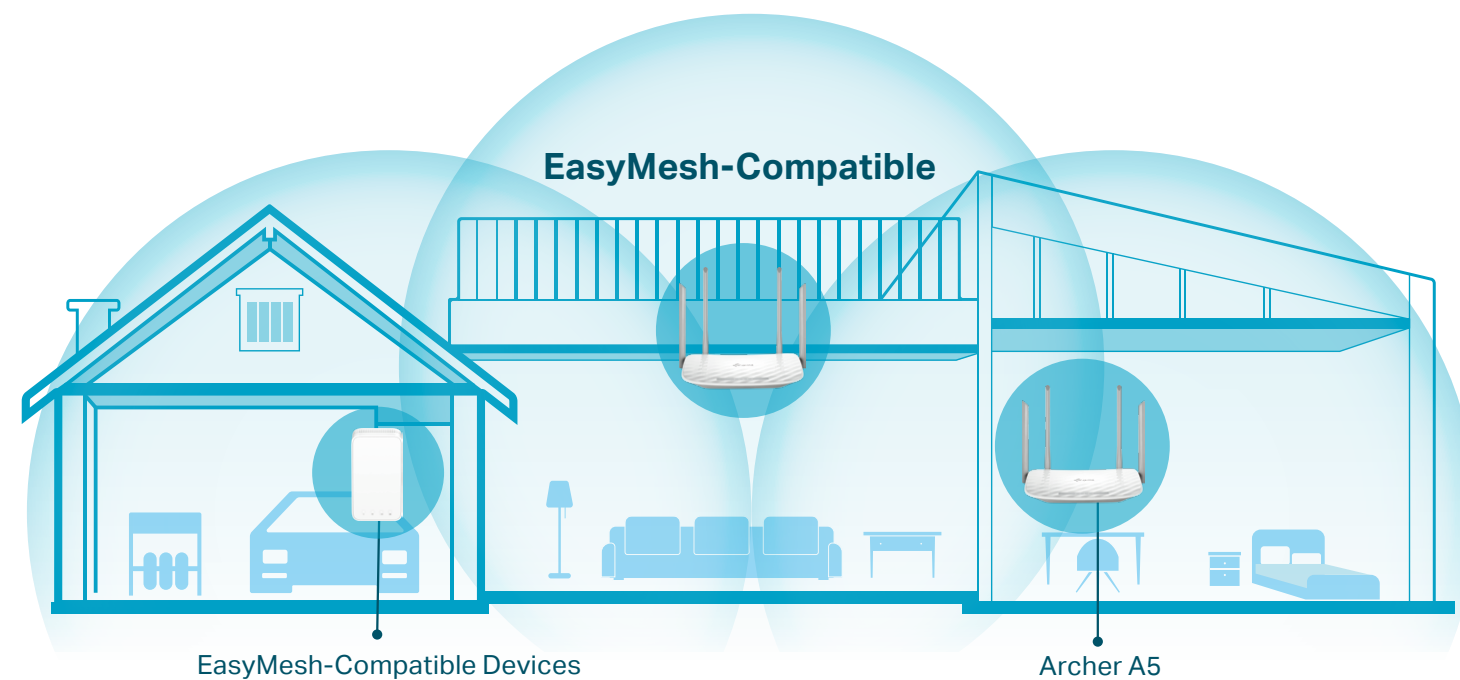
Equipped with four external antennas, Archer A5 creates stronger and more reliable networks for all to enjoy in your home. Beamforming technology concentrates the Wi-Fi signal towards your connected devices, providing better Wi-Fi range and network performance.



# Highlights

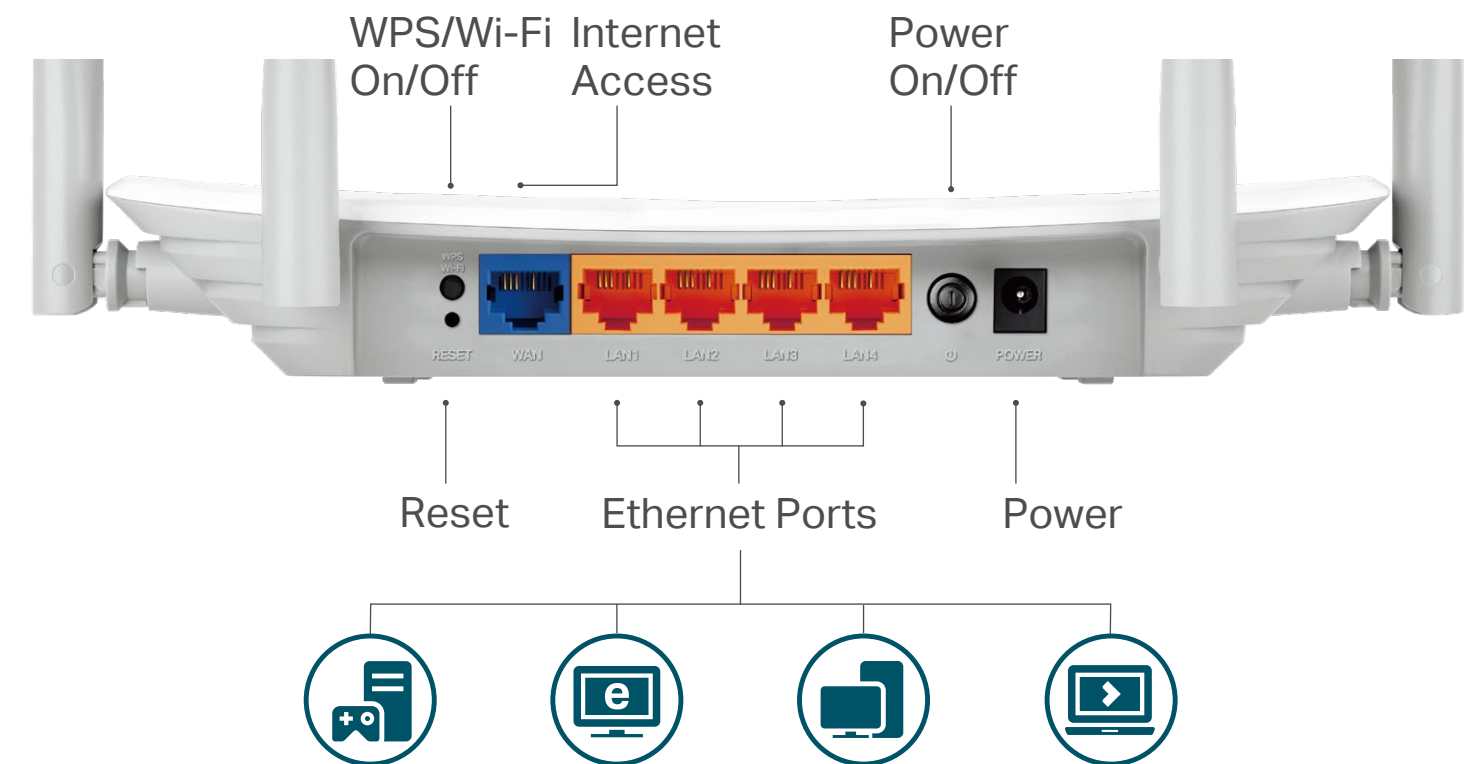
## Convenient Mesh Networking<sup>△</sup>

Mesh networking creates smooth, fast, stable roaming. Archer A5 can build an EasyMesh network with devices that use EasyMesh technology. Eliminate Wi-Fi dead zones, expand your network, and fill your entire home with high-speed Wi-Fi.



## Fast Ethernet

Enjoy fast, reliable wired connections for gaming and streaming in the best quality.

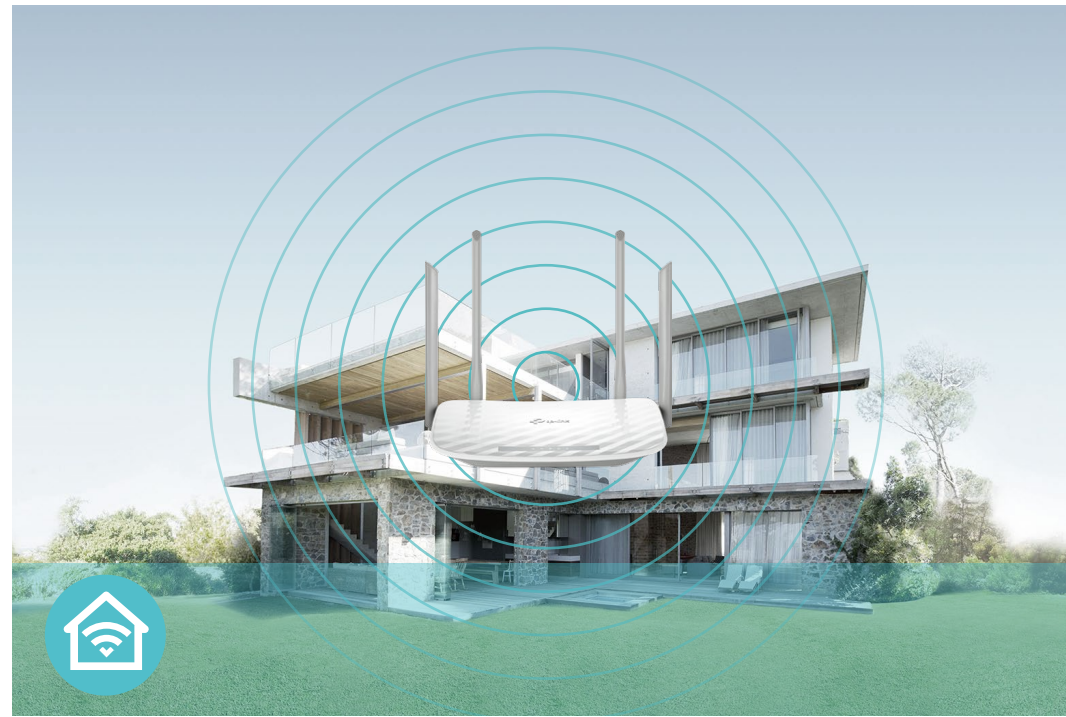


# Features



## Speed

- 802.11ac Technology – Powered by 802.11ac Wi-Fi technology, Archer A5 creates a reliable, blazing-fast network.
- Ultimate Wireless Speed – 867 Mbps on 5 GHz + 300 Mbps on 2.4 GHz



## Wi-Fi Range

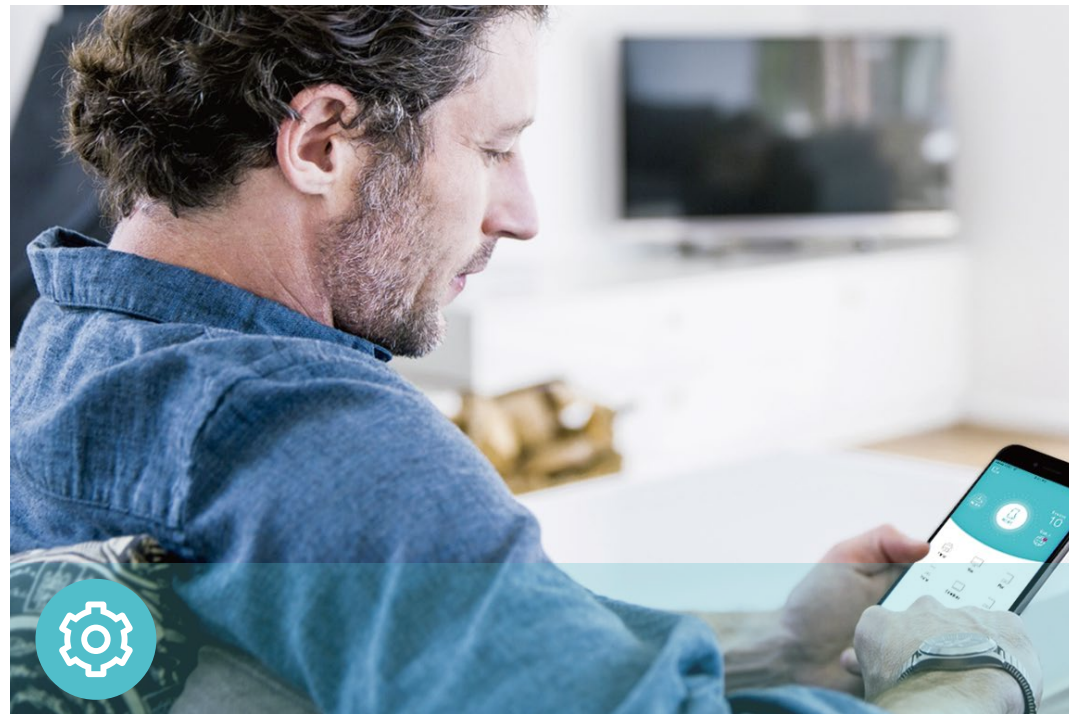
- Ultimate Range Wi-Fi – Four external antennas deliver a Wi-Fi signal to every corner of your home, making all of your connections more efficient and stable
- Beamforming Technology – Concentrates Wi-Fi signals towards individual devices to ensure stronger connections
- Seamless EasyMesh Network – Transfer between seamless whole-home Wi-Fi without any drops or lag and manage your whole network using a centralized panel



## Reliability

- Smart Connect – Intelligently switches each device's connection to the optimum available Wi-Fi band
- IoT Network – Creates a dedicated wireless network to manage IoT devices together and improve their connectivity stability

# Features



## Easy Management

- Intuitive Web UI – Ensures quick and simple Installation without hassle
- Hassle-free Management with Tether App – Network management is made easy with the TP-Link Tether App, available on any Android and iOS device
- TP-Link ID – Binds the router to your TP-Link ID and other family member's accounts to manage the router



## Security

- Encryptions for Secure Network – WPA, WPA2, and WPA3 encryptions provide active protection against security threats
- Guest Network – Keeps your main network secure by creating a separate network for friends and visitors
- Parental Controls – Restricts internet access time and contents for children devices



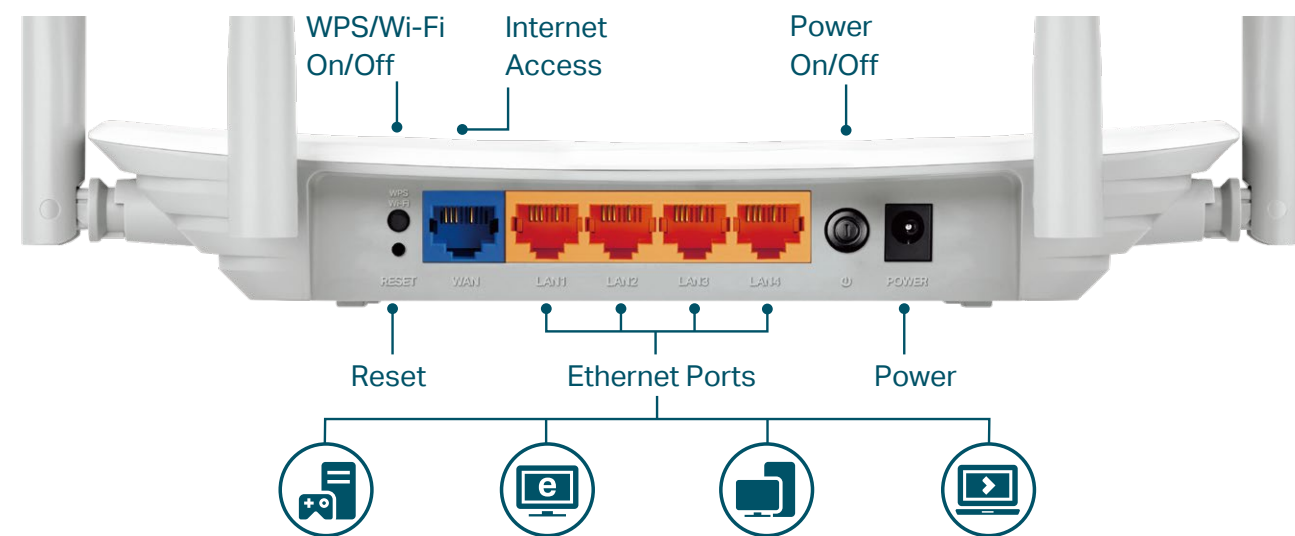
## Ease of Use

- Wi-Fi Sharing – Easily shares your Wi-Fi access with a QR code
- Wi-Fi Schedule – The wireless network can be automatically off within a specified period when you do not need the wireless connection
- LED Control – Automatically turns your router's LEDs off within a specified period

# Specifications

## Hardware

- Ethernet Ports: 4\*10/100 Mbps LAN Ports, 1\*10/100 Mbps WAN Port
- Buttons: Reset Button, Power On/Off Button, WPS/Wi-Fi On/Off Button
- Antennas: 4 Fixed Omni Directional Antennas
- External Power Supply: 9VDC/0.85A
- Dimensions (W x D x H): 9.1 x 5.7 x 1.4 in. (230 x 144 x 35 mm)



## Wireless

- Wireless Standards: IEEE 802.11ac/n/a 5 GHz, IEEE 802.11b/g/n 2.4 GHz
- Frequency: 2.4 GHz and 5 GHz
- Signal Rate:
  - 5 GHz: Up to 867 Mbps
  - 2.4 GHz: Up to 300 Mbps
- Transmission Power:
  - CE EIRP: <20dBm(2.4GHz) <23dBm(5GHz)
- Reception Sensitivity:
  - 5 GHz:
    - 11a 54M:-77dBm;
    - 11ac VHT20 MCS8:-72 dBm;
    - 11ac VHT40 MCS9:-68 dBm;
    - 11ac VHT80 MCS9:-63 dBm;
  - 2.4 GHz:
    - 11g 54M:-76 dBm;
    - 11n HT20 MCS7:-74 dBm;
    - 11n HT40 MCS7:-71 dBm;
- Wireless Function: Enable/Disable Wireless Radio, WMM, Wireless Schedule
- Wireless Security: WPA, WPA2, WPA3, WPA/WPA2-Enterprise (802.1x)

# Specifications

## Software

- Quality of Service: Device Prioritization
- WAN Type: Dynamic IP/Static IP/PPPoE(Dual Access)/PPTP(Dual Access)/L2TP(Dual Access)
- EasyMesh: Supported
- Management: Local Management, Remote Management
- DHCP: Server, DHCP Client List, Address Reservation
- NAT Forwarding: Port Forwarding, Port Triggering, UPnP, DMZ
- Dynamic DNS: DynDns, NO-IP, TP-Link
- Access Control: Allow List, Deny List
- Parental Controls: URL Filtering, Time Controls
- Firewall Security: SPI Firewall, IP and MAC Address Binding
- Protocols: IPv4, IPv6
- Guest Network: 2.4 GHz Guest Network, 5 GHz Guest Network

## Others

- Certification  
CE, RoHS
- System Requirements  
Microsoft Edge, Firefox, Chrome, Safari, or other JavaScript-enabled browser  
\*You are recommended to use the latest version  
Cable or DSL Modem (if needed)  
Subscription with an internet service provider (for internet access)
- Environment  
Operating Temperature: 0°C~40°C (32°F ~104°F)  
Operating Humidity: 10%~90% non-condensing
- Package Contents  
Wireless Router Archer A5  
Power Adapter  
RJ45 Ethernet Cable  
Quick Installation Guide



For more information, please visit

[https://www.tp-link.com/products/details/?model=Archer+A5\\_V6.2](https://www.tp-link.com/products/details/?model=Archer+A5_V6.2)

or scan the QR code left

Specifications are subject to change without notice. TP-Link is a registered trademark of TP-LINK CORPORATION PTE. LTD. Other brands and product names are trademarks or registered trademarks of their respective holders. Copyright ©2024 TP-LINK CORPORATION PTE. LTD. All rights reserved.

\*Maximum wireless signal rates are the physical rates derived from IEEE Standard 802.11 specifications. Actual wireless data throughput and wireless coverage are not guaranteed and will vary as a result of network conditions, client limitations, and environmental factors, including building materials, obstacles, volume and density of traffic, and client location.

†Use of MU-MIMO requires clients to also support MU-MIMO.

\*Actual network speed may be limited by the rate of the product's Ethernet WAN or LAN port, the rate supported by the network cable, Internet service provider factors and other environmental conditions.

^TP-Link EasyMesh-compatible products can network with other devices that use EasyMesh. Failed connections may be due to firmware conflicts of different vendors. The EasyMesh-Compatible function is still being developed on some models and will be supported in subsequent software updates.

©2024 TP-Link

[www.tp-link.com](http://www.tp-link.com)

TP-Link AC1200 Dual Band Wi-Fi Router Archer A5