

Omada Pro

Business Cloud SDN Solution

Omada Pro AP - Business Wi-Fi Series




Omada Pro SDN Controller



AP9778

Product List

Ceiling Mount AP

Picture	
Model	AP9778
Product	US: Omada Pro BE22000 Ceiling Mount Wi-Fi 7 Access Point EU: Omada Pro BE19000 Ceiling Mount Wi-Fi 7 Access Point
Speed	2.4 GHz: 1376 Mbps 5 GHz: 8640 Mbps (US)/5760 Mbps (EU) 6 GHz: 11520 Mbps
Ethernet Port	2x 10Gbps Ethernet Ports (20G Aggregation Speed*)
USB Support	1x USB 3.0 Port
Power Supply	802.3bt PoE or 12V/4.5A DC
Internal Antennas	2.4 GHz: 4 x 4 dBi 5 GHz: 4 x 5.5 dBi 6 GHz: 4 x 5 dBi

Specifications

Ceiling Mount AP

Model		AP9778
Name		US: Omada Pro BE22000 Ceiling Mount Wi-Fi 7 Access Point EU: Omada Pro BE19000 Ceiling Mount Wi-Fi 7 Access Point
Main Design	LAN Interfaces	2x 10Gbps Ethernet Ports (20G Aggregation Speed*)
	USB Support	1x USB 3.0 Port
	Wi-Fi Standards	IEEE 802.11 a/b/g/n/ac/ax/be
	Maximum Data Rate	US: 1376 Mbps (2.4 GHz) +8640 Mbps (5 GHz) +11520 Mbps (6 GHz) EU: 1376 Mbps (2.4 GHz) +5760 Mbps (5 GHz) +11520 Mbps (6 GHz)
	Wireless Client Capacity	760+
	Bluetooth	Supported
	Antennas	2.4 GHz: 4 x 4 dBi 5 GHz: 4 x 5.5 dBi 6 GHz: 4 x 5 dBi
	Transmit Power	CE: <20 dBm (2.4 GHz, EIRP); <23 dBm (5 GHz band 1&band 2, EIRP); <30 dBm (5 GHz band 3, EIRP); <23 dBm (6 GHz EIRP) FCC: <28 dBm (2.4 GHz); <28 dBm (5G band 1&band 4); <24 dBm (5G band 2&band 3); <28 dBm (6 GHz)
Centralized Management	Omada Software Controller Pro	•
	Omada Cloud-based Controller Pro	•
	Omada APP	•
Security	WIDS/WIPS	•
	Captive Portal Authentication	•
	Access Control	•
	Maximum number of MAC Filter	4000
	Wireless Isolation between Clients	•
	VLAN	•
	Rogue AP Detection	•
	Wireless Encryption	WPA-Personal/Enterprise, WPA2-Personal/Enterprise, WPA3-Personal/Enterprise
	802.1X Support	•

Ceiling Mount AP

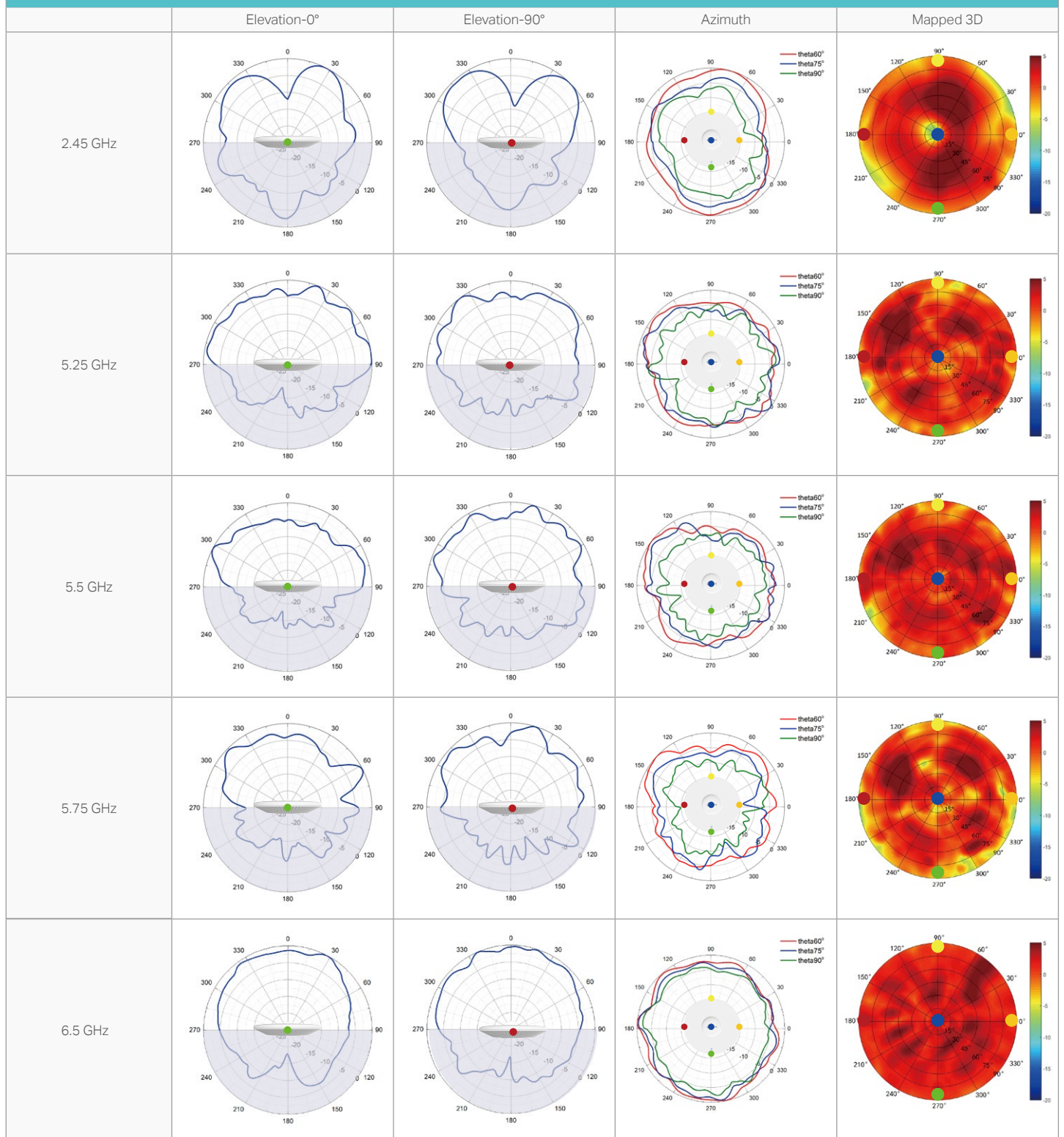
Model		AP9778
Wireless Function	Multiple SSIDs	24 (8 on each band)
	Enable/Disable Wireless Radio	•
	Enable/Disable SSID Broadcast	•
	Guest Network	•
	Automatic Channel Assignment	•
	Transmit Power Control	Adjust transmit Power on dBm
	QoS (WMM)	•
	Seamless Roaming	•
	Mesh	•
	Beamforming	•
	MU-MIMO	•
	Rate Limit	Based on SSID/Client
	Load Balance	•
	Airtime Fairness	•
	Band Steering	•
	RADIUS Accounting	•
	PPSK Pro	•
	Hotspot 2.0	• (*To be supported with subsequent software update)
	MAC Authentication	•
	Reboot Schedule	•
	Wireless Schedule	•
	Wireless Statistics	•
	Static IP/Dynamic IP	•
Support Data Rates	802.11be	8.6 Mbps to 11529.6 Mbps (MCS0-MCS13, NSS = 1 to 4 EHT20/40/80/160/320)
	802.11ax	8 Mbps to 4804 Mbps (MCS0-MCS11, NSS = 1 to 4 HE20/40/80/160)
	802.11ac	6.5 Mbps to 4333.3 Mbps (MCS0-MCS11, NSS = 1 to 4 VHT20/40/80/160)
	802.11n	6.5 Mbps to 600 Mbps(MSC0-MCS31, HT20/40)
	802.11g	6, 9, 12, 18, 24, 36, 48 ,54 Mbps
	802.11b	1, 2, 5.5, 11 Mbps
	802.11a	6, 9, 12, 18, 24, 36, 48 ,54 Mbps

Ceiling Mount AP

Model		AP9778
Management	Intelligent Anomaly Detection and Analysis	•
	Intelligent Network Optimization	•
	LED ON/OFF Control	•
	Management MAC Access Control	•
	Web-based Management	•
	SNMP	v1, v2c, v3
	SSH	•
	Restore & Backup	•
	Firmware update via Web	•
	NTP	•
	System Log	•
	Email Alerts	•
Physical & Environment	Power Supply	802.3bt PoE or 12V/4.5A DC
	Maximum Power Consumption	EU: 44 W (for PoE); 39W (for DC) US: 52 W (for PoE); 46W (for DC)
	Reset	•
	Mounting	Ceiling / Wall mouting (Kits included)
Others	Certifications	CE, FCC, RoHS
	Dimensions (W x D x H)	280 x 280 x 58.7 mm
	Environment	Operating Temperature: 0 °C–40 °C (32 °F–104 °F); Storage Temperature: -40 °C–70 °C (-40 °F–158 °F); Operating Humidity: 10%–90% non-condensing; Storage Humidity: 5%–90% non-condensing;

Antenna Radiation Patterns

AP9778



Disclaimers

Wireless Speed and Range Disclaimer

Maximum wireless transmission rates are the physical rates derived from IEEE Standard 802.11 specifications. Range and coverage specifications were defined according to test results under normal usage conditions. Actual wireless transmission rate and wireless coverage are not guaranteed, and will vary as a result of 1) environmental factors, including building materials, physical objects and obstacles, 2) network conditions, including local interference, volume and density of traffic, product location, network complexity, and network overhead and 3) client limitations, including rated performance, location, connection quality, and client condition.

Wireless Client Capacity Disclaimer

Wireless client capacity specifications were defined according to test results under normal usage conditions. Actual wireless client capacity is not guaranteed, and will vary as a result of 1) environmental factors, including building materials, physical objects and obstacles, 2) network conditions, including local interference, volume and density of traffic, product location, network complexity, and network overhead and 3) client limitations, including rated performance, location, connection quality, and client condition.

Ethernet Port Limitation Disclaimer

Actual network speed may be limited by the rate of the product's Ethernet WAN or LAN port, the rate supported by the network cable, Internet service provider factors and other environmental conditions.

MU-MIMO Disclaimer

(Only for certain devices)

MU-MIMO capability requires client devices that also support MU-MIMO.

Seamless Roaming Disclaimer

(Only for certain devices)

Seamless roaming requires both the access point and client devices to support 802.11k and 802.11v protocols.

Lightning and Electro-Static Discharge Protection Disclaimer

(Only for outdoor devices)

Protection against lightning and electro-static discharge may be achieved through proper product setup, grounding and cable shielding. Refer to the instruction manual and consult an IT professional to assist with setting up this product.

PoE Disclaimer

PoE budget calculations are based on laboratory testing. Actual PoE power budget is not guaranteed and will vary as a result of client limitations and environmental factors.

Some models featured in this guide may be unavailable in your country or region. Visit TP-Link website for local sales information: www.tp-link.com. Specifications are subject to change without notice.

© 2025 TP-Link