



Wi-Fi 6

AX3000


Wi-Fi 6 Travel Router

Powerful Wi-Fi in Your Pocket




TL-WR3002X



3.0 Gbps
Dual-Band Wi-Fi 6⁺


2.5G Multi-Gig
Connectivity


Secure Browsing with
VPN Encryption


USB for
3G/4G/5G Modem &
Tethering

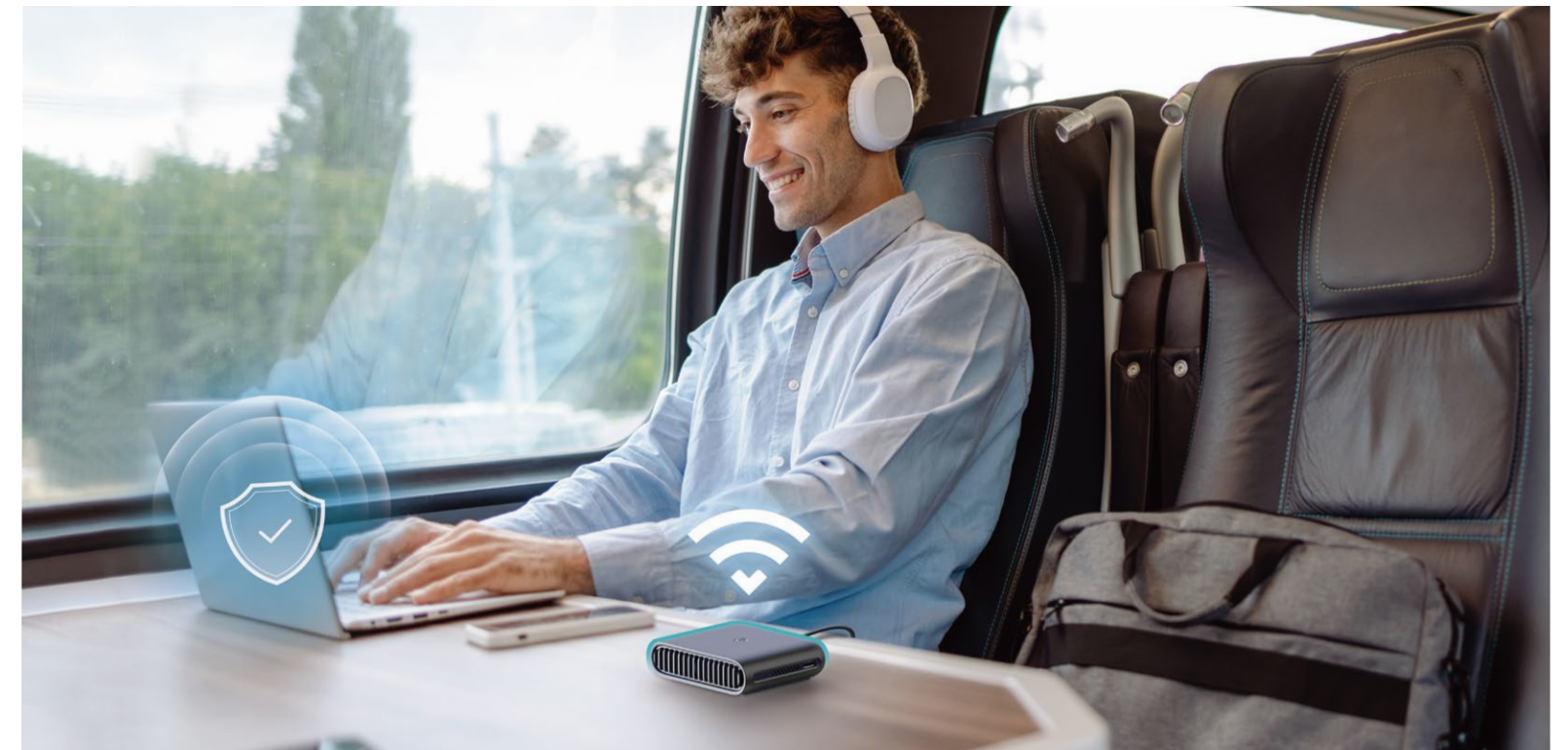

Captive Portal
Authentication


Power It with a
Power Bank

Highlights

Flexible Network Access Wherever You Go

Supporting multiple modes (Router / USB Modem (3G/4G/5G) / USB Tethering / Hotspot / Access Point / Range Extender / Client Mode), TL-WR3002X allows you to create Wi-Fi in various scenarios at home, in hotel rooms, or on the road.



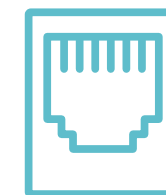
USB Tethering Mode

Share mobile data for broader coverage.



Hotspot Mode

Convert public Wi-Fi into a private network.



Router Mode

Transform a wired connection into your own Wi-Fi network.



USB Modem Mode

Create a Wi-Fi network using a USB modem.

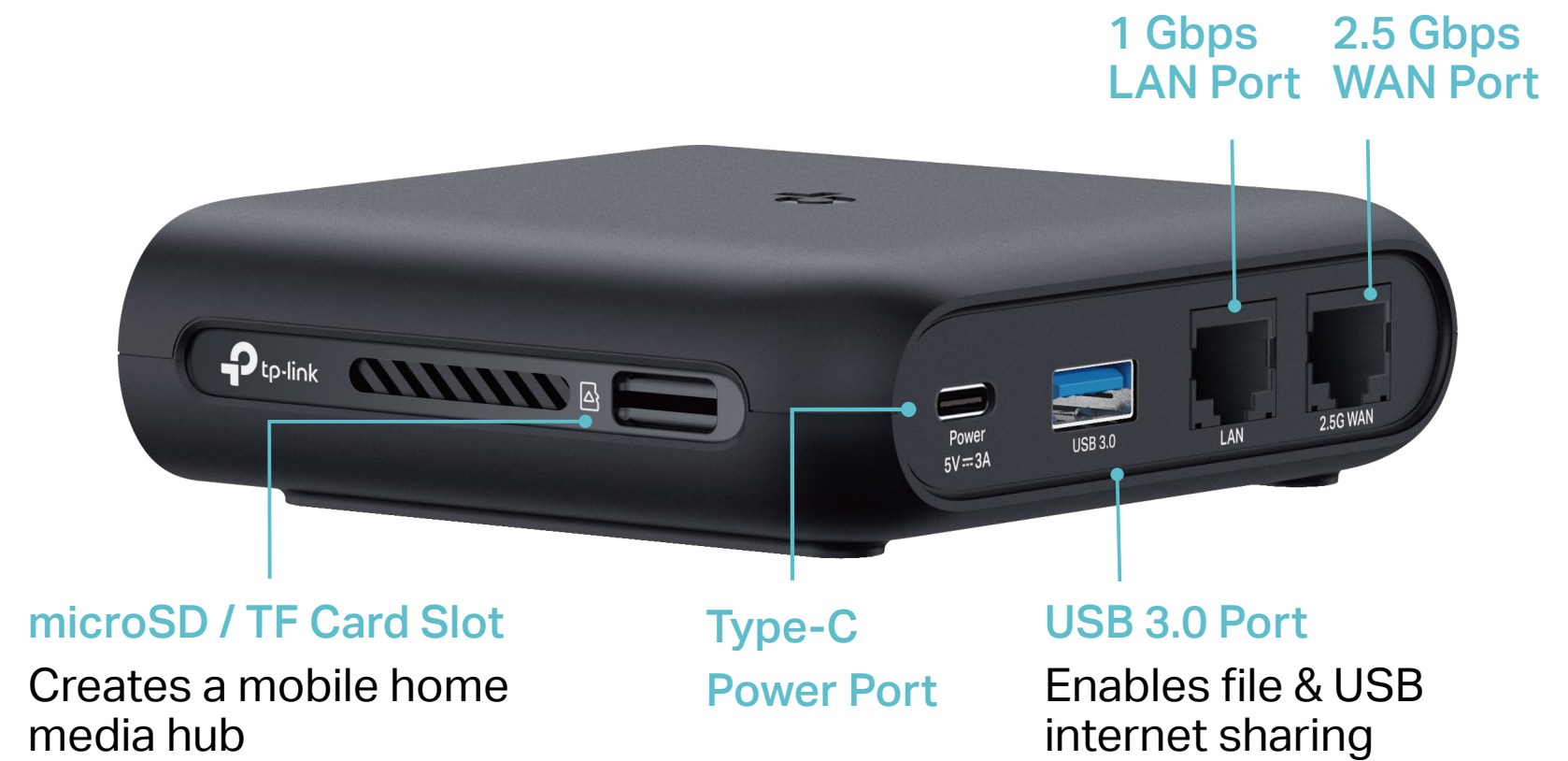
Highlights

Wi-Fi 6 Travel Router

Merging Wi-Fi 6 Technology, TL-WR3002X is designed to deliver a huge boost in coverage, speed, and total capacity while on the go.

Easily Access Your Files From Anywhere

By plugging an external USB hard disk or a micro SD/TF card into the router, you can easily share files between connected devices.



Features

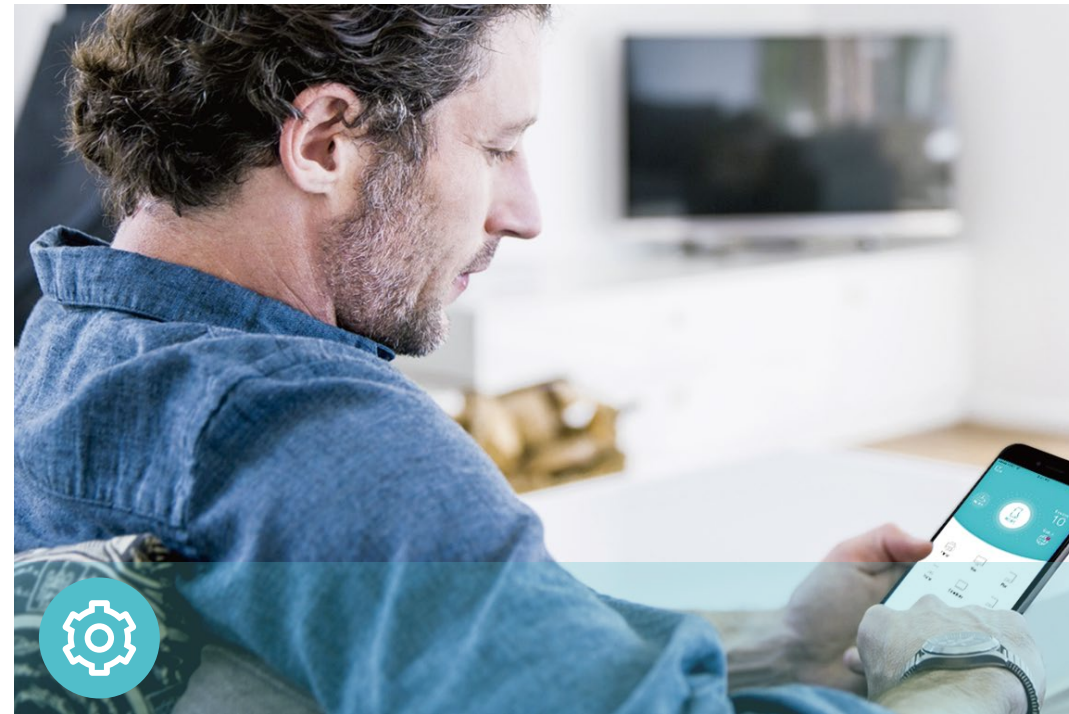


Reliability

- AX3000 Dual-Band Wi-Fi 6 Travel Router: – Merging Wi-Fi 6 Technology, TL-WR3002X delivers fast wireless speed (2402 Mbps on 5 GHz, 574 Mbps on 2.4 GHz) for uninterrupted video streaming, downloading, and online gaming all at the same time^{††}
- Quality of Service (QoS) – Prioritizes your bandwidth needs to get a faster networking experience



Scan the QR code to download TP-Link Tether.



Ease of Use

- Intuitive Web UI – Ensures quick and simple Installation without hassle
- Fast Encryption – One-touch WPA2 wireless security encryption with the WPS button
- Fast Sharing – A USB 3.0 port and a microSD/TF card slot make it easy to share photos, videos, and music across your home network. Through the router's FTP server, you can also access your files and media from network devices remotely
- Portable and Durable Design – TL-WR3002X is a pocket-sized travel router compactly designed for your next trip or adventure. Its small size is designed for travel-friendly storage
- Hassle-free Management with Tether App – Network management is made easy with the TP-Link Tether App, available on any Android and iOS device



Security

- 24/7 Secure Surfing with VPN Encryption – Supporting OpenVPN and WireGuard®, TL-WR3002X can keep your network private and secure from anywhere in the world, whether you're working remotely abroad, or browsing on the public WiFi
- Guest Network – Keeps your main network secure by creating a separate network for friends and visitors
- Access Control – Establishes an allow list or deny list to allow or restrict certain devices to access the internet
- HomeShield – Rest easy knowing your home network is protected with TP-Link's advanced encrypted security, HomeShield
- Encryptions for Secure Network – WPA2/PSK and WPA3-Personal encryptions provide active protection against security threats

Specifications

Hardware

- Ports: 2.5× Gigabit WAN/LAN Port, 1× Gigabit LAN Port, 1× USB 3.0 Port, 1× Type-C Power Port, 1× microSD/TF Card Slot
- Buttons: WPS/Reset Button, ECO Mode Switch
- Antennas: Internal Antennas
- Dimensions: 4.1 × 3.6 × 1.2 in (105 × 91.3 × 30 mm), 5 oz / 142 g

Wireless

- Wireless Standards: IEEE 802.11ax/ac/n/a 5GHz, IEEE 802.11ax/b/g/n 2.4GHz
- Frequency: 2.4GHz and 5GHz
- Signal Rate: 574Mbps at 2.4GHz, 2402Mbps at 5GHz
- Transmit Power:
FCC: ≤30dBm (2.4GHz); ≤24dBm (5.25GHz~5.35GHz&5.47GHz~5.725GHz); ≤30dBm (5.15GHz~5.25GHz&5.725GHz~5.835GHz)
CE: ≤20dBm EIRP (2.4GHz); ≤23dBm EIRP (5.15GHz~5.35GHz); ≤30dBm EIRP (5.47GHz~5.725GHz)

- Reception Sensitivity:
2.4GHz
11g 54M:-76dBm
11ax HE20M MCS11:-65 dBm
11ax HE40M MCS11:-62 dBm
5GHz
11a 54M :-77 dBm
11ax HE20M MCS11:-63 dBm
11ax HE40M MCS11:-60 dBm
11ax HE80M MCS11:-58 dBm
11ax HE160M MCS11:-55 dBm
- Wireless Function: Enable/Disable Wireless Radio, WMM
- Wireless Security: WPA2/PSK, WPA3-Personal encryptions

Specifications

Software

- Protocols: IPv4, IPv6
- HomeShield: Supported
- WAN Types: Dynamic IP, Static IP, PPPoE, PPTP, L2TP
- Quality of Service: QoS by Device
- Cloud Service: Auto Firmware Upgrade, TP-Link ID, DDNS
- NAT Forwarding: Port Forwarding, Port Triggering, DMZ, UPnP
- DDNS: TP-Link, NO-IP, DynDNS

Others

- Certification:
FCC, CE, RoHS
- System Requirements:
Microsoft Edge, Firefox, Chrome, Safari, or other JavaScript-enabled browser

*You are recommended to use the latest version
- Environment:
Operating Temperature: 0°C~40°C (32°F ~104°F)
Operating Humidity: 10%~90% non-condensing
- Package Contents
Wi-Fi 6 Portable Router TL-WR3002X
RJ45 Ethernet Cable
Power Adapter
USB Cable
Quick Installation Guide
Wi-Fi Info Card



For more information, please visit

https://www.tp-link.com/products/details/?model=TL-WR3002X_V1

or scan the QR code left

[†]Maximum wireless signal rates are the physical rates derived from IEEE Standard 802.11 specifications. Actual wireless data throughput, wireless coverage and number of connected devices are not guaranteed and will vary as a result of network conditions, client limitations, and environmental factors, including building materials, obstacles, volume and density of traffic, and client location.

[‡]Use of 802.11ax (Wi-Fi 6) and its features require clients to also support corresponding features. Actual power reduction by Target Wake Time may vary as a result of network conditions, client limitations, and environmental factors.

[§]The 802.11ax white paper defines standardized modifications to both the IEEE 802.11 physical layers (PHY) and the IEEE 802.11 Medium Access Control (MAC) layer as enabling at least one mode of operation capable of supporting improvement of at least four times the average throughput per station (measured at the MAC data service access point) in a dense deployment scenario.

* It is recommended to use the supplied power adapter. If you use other power adapters, there is a risk of damaging the device.

** Whether the USB Internet Sharing function can be used depends on the compatibility of the 3G/4G/5G USB Modem or mobile device, and is not guaranteed to be compatible with all devices.

Actual network speed may be limited by the rate of the product's Ethernet WAN or LAN port, the rate supported by the network cable, internet service provider factors, and other environmental conditions.

©2024 TP-Link

www.tp-link.com

TP-Link AX3000 Wi-Fi 6 Portable Router TL-WR3002X