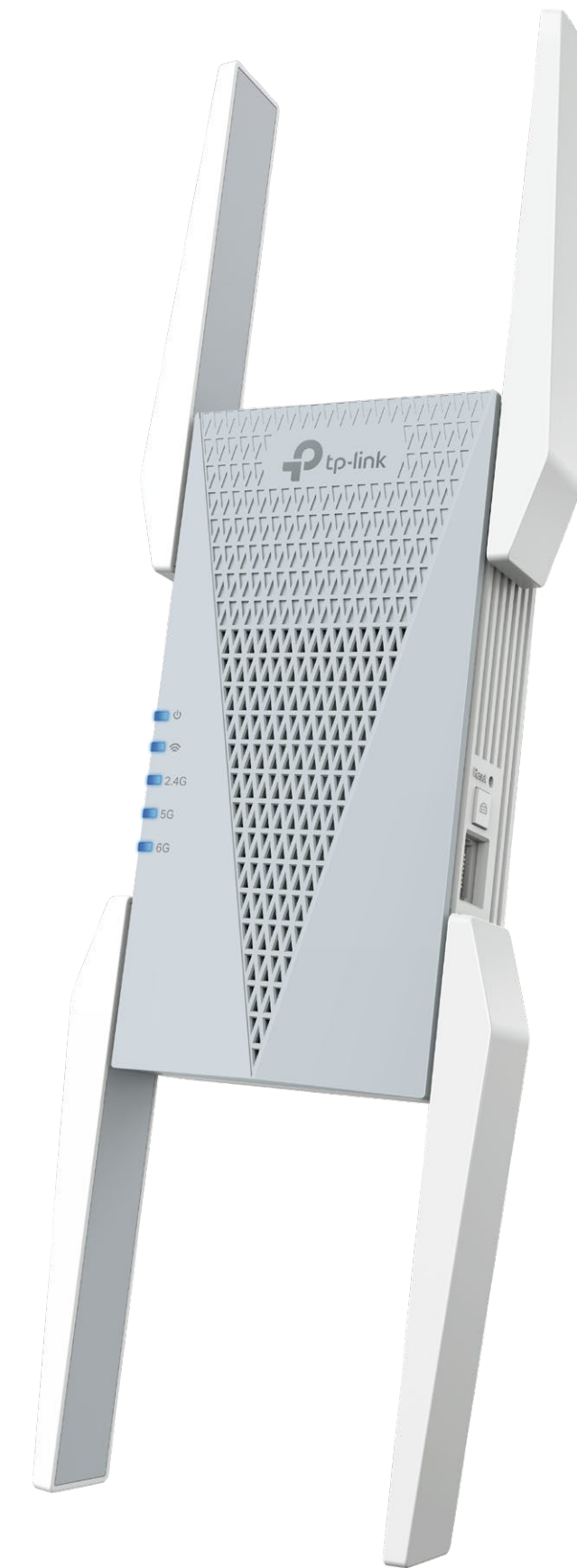




AXE5400 Tri-Band Wi-Fi 6E Range Extender

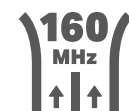
Boost your Wi-Fi Coverage



RE813XE



Tri-Band
Networking



160
MHz
↑↑↑
Wider
Channel Width



Connect
More Devices^Δ



Uninterrupted
Streaming[§]

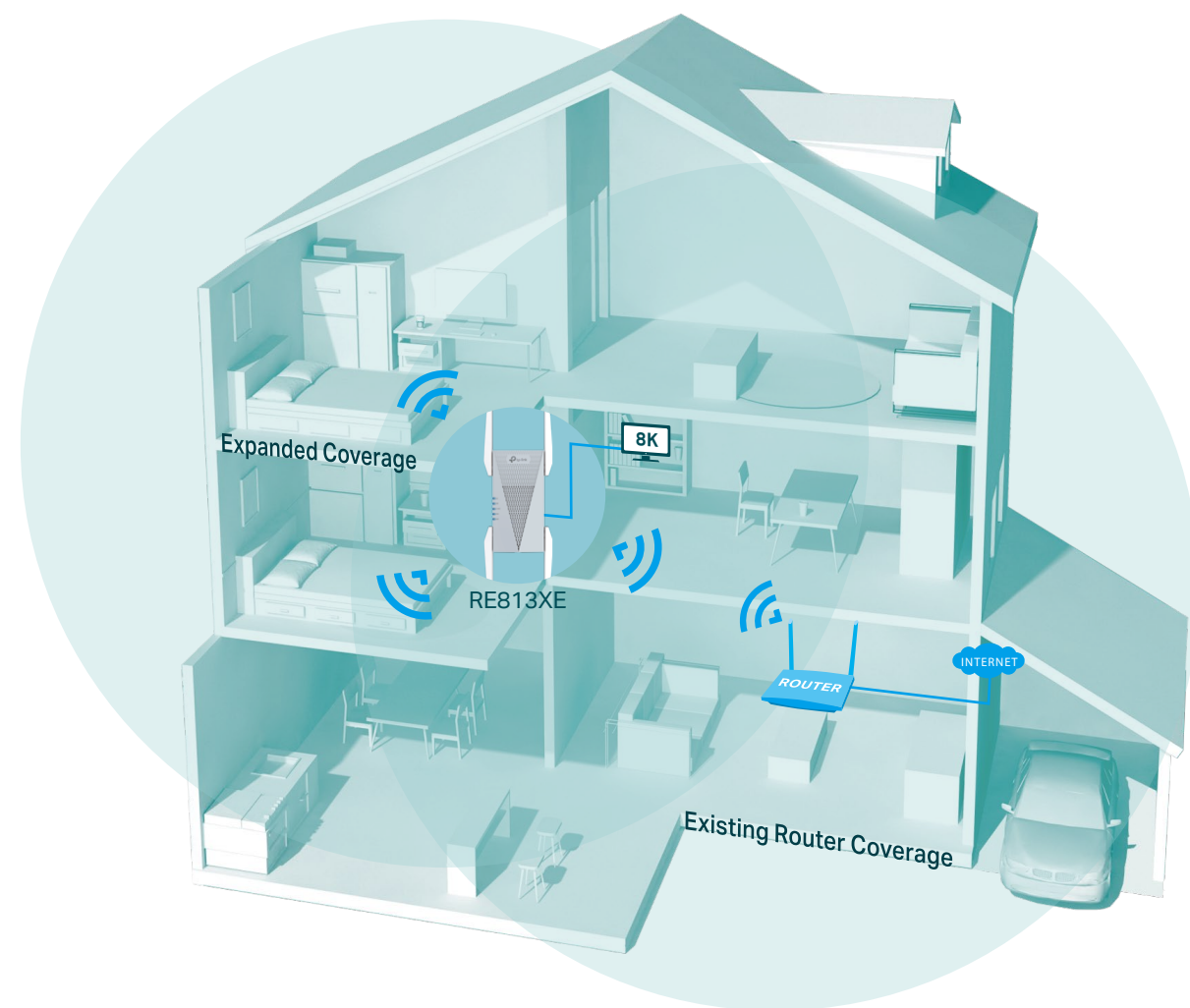


Easy Setup
Within Minutes

Highlights

Eliminate Wi-Fi Dead Zones with Powerful Wi-Fi

Connect with a TP-Link's OneMesh™ router to create a mesh network for seamless whole-home coverage, or any Wi-Fi router to boost your Wi-Fi range.†



● Wi-Fi Coverage
— Ethernet Cable



Tri-Band Networking

Ensure full band speeds to your devices.



Faster Wi-Fi 6E Speed

Experience explosive Wi-Fi speeds up to 5400 Mbps with the wider 160 MHz channel.†



Larger Capacity

Wi-Fi 6E allows for 7 additional 160 MHz channels, enabling more simultaneous transmissions at the highest possible speeds.



Clean and Congestion Free

The 6 GHz band provides a clearer band to prevent Wi-Fi interference and congestion.



Save Clients' Battery Power*

Target Wake Time schedules the connection time of battery-powered devices to reduce their power consumption.*



Adaptive Path Selection

Keep your network running at top-speed by automatically choosing the fastest connection path to the router.



Access Point Mode

Create a new Wi-Fi access point to enhance your wired network with Wi-Fi capability.

Highlights

Wi-Fi 6E: Huge Leap Forward for Wi-Fi

Robust High-Speed Connections

Experience ultra-fast Wi-Fi with more connected devices thanks to the brand-new 6 GHz band. The added 160MHz channels prevent competition over bandwidth and drops in speed.

Clean and Congestion-Free

Create an open and clear Wi-Fi network thanks to the brand-new 6 GHz band elimination interference from legacy devices.

More than a Traditional Wi-Fi Extender

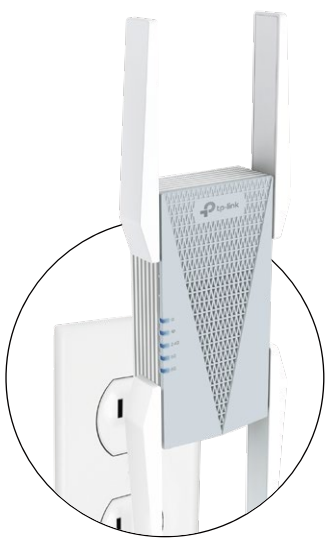
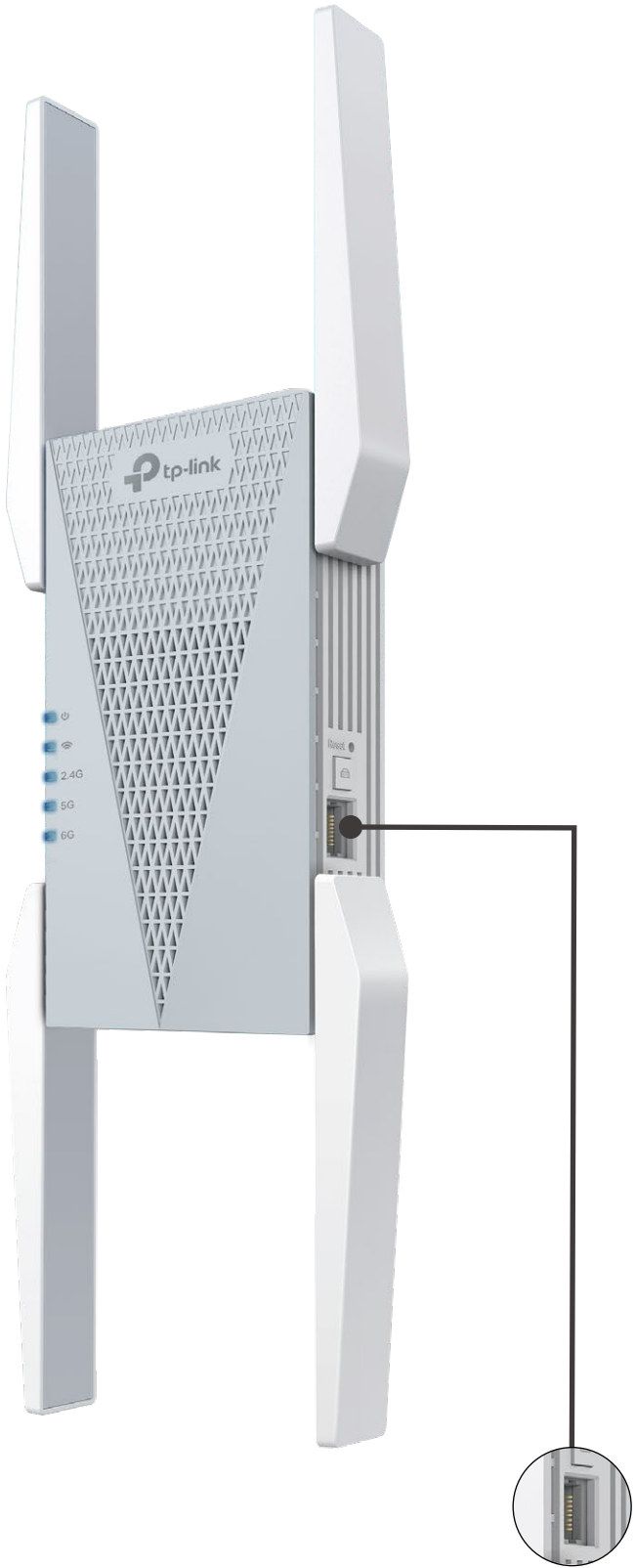
Connect with a TP-Link's OneMesh™ router to create a mesh network for seamless whole-home coverage, or any Wi-Fi router to boost your Wi-Fi range.‡



Check the full list of OneMesh™ extenders and routers at: tp-link.com/onemesh/compatibility

*More compatible devices coming soon

AXE5400 Wi-Fi 6E Tri-Band Range Extender



Secure One-touch Connection (WPS)

Press WPS button and connect the newly-added extender to a router with ease.

Smart Signal Indicator

See signal to find the best spot to properly place the extender.

- Strong signal
- Weak signal

Gigabit Ethernet Port

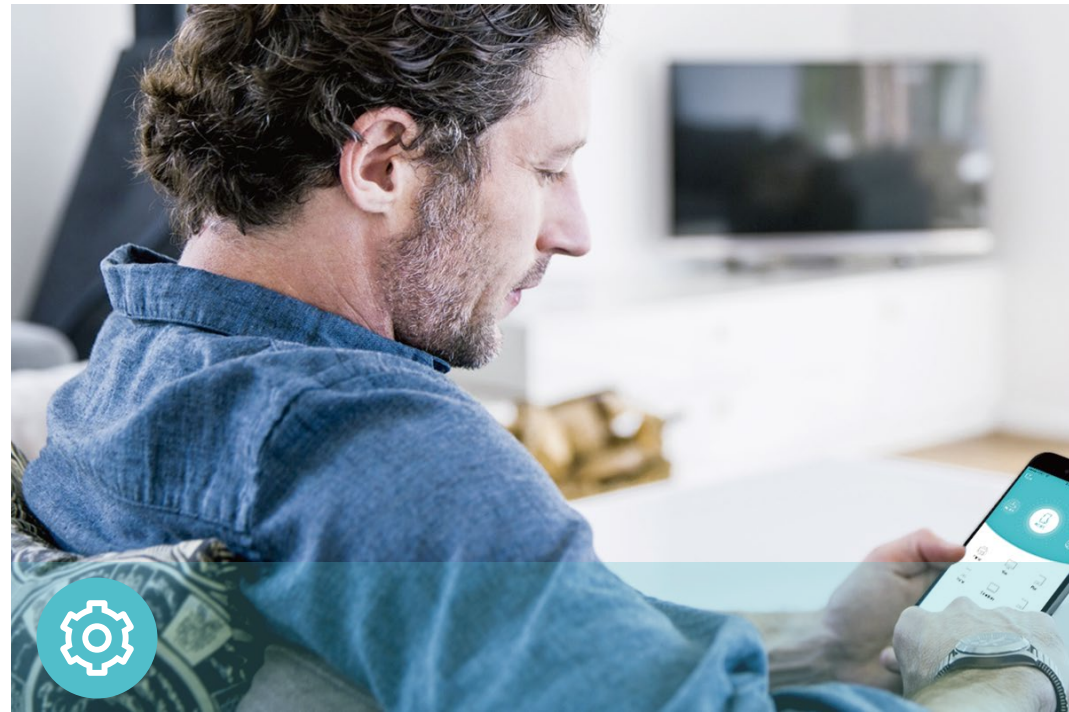
Plug in to give wired devices network access, ideal for high-bandwidth intensity.

Four External Antennas

Provide wider signal coverage.



Features



Ease of Use

- Intuitive Web UI– Ensures quick and simple installation without hassle
- Fast Setup – One-touch connection with the WPS button
- Hassle-free Management with Tether App – Network management is made easy with the TP-Link Tether App, available on any Android or iOS device
- Online Upgrade – Keeps you informed of the latest firmware and allows online updating on the web UI



Speed

- Ultimate Wireless Speed – Combined wireless speeds of up to 574 Mbps (over 2.4 GHz), 2402 Mbps (over 5 GHz) and 2402 Mbps (over 6 GHz)[†]
- Support Wi-Fi 6E – Turbocharge your devices with wireless speeds of up to 5.4 Gbps
- Adaptive Path Selection – Keep your network running at top-speed by automatically choosing the fastest connection path to the router



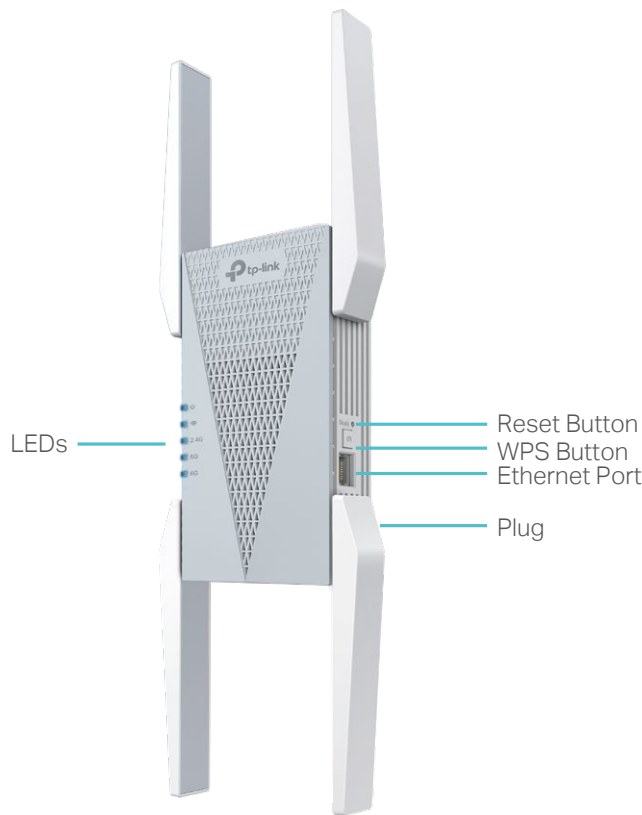
Reliability

- Simultaneous Tri Band – Separate Wi-Fi bands enable more devices to connect to your network without a drop in performance
- Reliable Connection – External antennas for optimal Wi-Fi coverage and reliable wireless connections
- Ultra-Low Latency – Take advantage of ultra-low latency to enjoy smoother online experience

Specifications

Hardware

- Button: WPS Button, Reset Button
- Port: 1 Gigabit Ethernet Port
- Antenna: 4 External Antennas
- Power Consumption: 20W
- Input Power: 100-240V~50/60Hz
- Dimensions (L×W×H): 4.2×1.6×13.7 in. (106.6×39.7×348.2 mm)



For more information, please visit
https://www.tp-link.com/products/details/?model=RE813XE_V1.6
or scan the QR code left

[†]Maximum wireless signal rates are the physical rates derived from IEEE Standard 802.11 specifications. Actual wireless data throughput and wireless coverage per ft² are not guaranteed and will vary as a result of network conditions, client limitations, and environmental factors, including building materials, obstacles, volume and density of traffic, and client location.
[‡]The product may not be compatible with routers or gateways with firmware that has been altered, is based on open source programs, or is non-standard or outdated.
[§]Uninterrupted Streaming is designed for devices that support the 802.11k/v standard.
[¶]Up to 4x Capacity refers to 4x increase in median throughput under dense environment compared to 11ac wave 2 range extender.
^{*}Saving clients' battery power requires clients to also support the 802.11ax Wi-Fi standard. Actual power reduction may vary as a result of network conditions, client limitations, and environmental factors. Actual network speed may be limited by the rate of the product's Ethernet WAN or LAN port, the rate supported by the network cable, Internet service provider factors and other environmental conditions.
©2025 TP-Link

Wireless

- Wireless Standards: IEEE 802.11ax 6 GHz, IEEE 802.11a/n/ac/ax 5 GHz, IEEE 802.11b/g/n/ax 2.4 GHz
- Frequency: 2.4 GHz / 5 GHz / 6 GHz
- Signal Rate: 574 Mbps at 2.4 GHz, 2402 Mbps at 5 GHz, 2402 Mbps at 6 GHz
- Transmit Power: 2.4GHz≤26dBm, 5GHz≤26dBm, 6GHz≤22dBm
- Reception Sensitivity:
6GHz:
11ax HE20 MCS0: -92dBm, 11ax HE20 MCS11: -61dBm
11ax HE40 MCS0: -89dBm, 11ax HE40 MCS11: -58dBm
11ax HE80 MCS0: -86dBm, 11ax HE80 MCS11: -55dBm
11ax HE160 MCS0: -83dBm, 11ax HE160 MCS11: -52dBm
5GHz:
11ax HE20 MCS0: -93dBm, 11ax HE20 MCS11: -62dBm
11ax HE40 MCS0: -90dBm, 11ax HE40 MCS11: -59dBm
11ax HE80 MCS0: -87dBm, 11ax HE80 MCS11: -56dBm
11ax HE160 MCS0: -84dBm, 11ax HE160 MCS11: -53dBm
2.4GHz:
11ax HE20 MCS0: -95dBm, 11ax HE20 MCS11: -64dBm
11ax HE40 MCS0: -92dBm, 11ax HE40 MCS11: -62dBm
- Wireless Function: LED Control, Access Control, Power Schedule, Wi-Fi Coverage
- Wireless Security: WPA3, WPA2-PSK, WPA

Others

- Certification
FCC, RoHS
- System Requirements
Internet Explorer, Firefox, Chrome, Safari, or other JavaScript-enabled browser
*You are recommended to use the latest version
- Package Contents
Wi-Fi Range Extender RE813XE
Quick Installation Guide