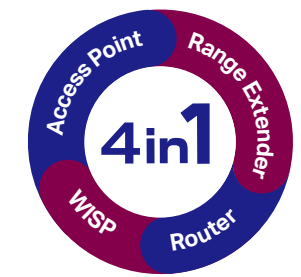




300 Mbps Wi-Fi Router

300 Mbps Multi-mode Router



Router / Access Point / Range
Extender / WISP Modes



5 dBi Antennas



Easy Setup by Tether App



Remote Router Control via
the Cloud



WPA3 Security†



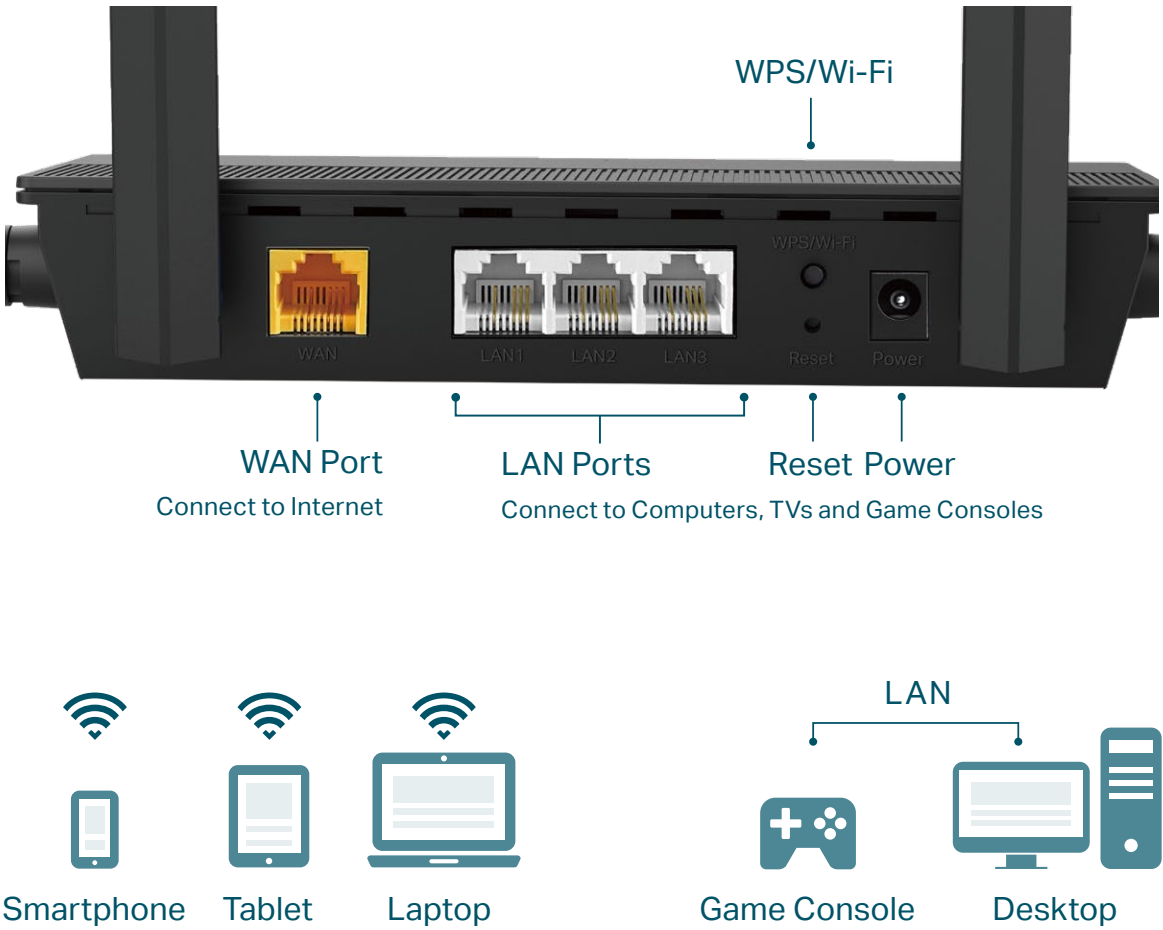
EasyMesh-Compatible
for Seamless Wi-Fi△

TL-WR846N

Highlights

Reliable Network Connection

Enhance wireless signal transmission and reception with TL-WR846N. Equipped with 5 dBi antennas and 3 high-speed Ethernet ports to provide reliable Wi-Fi and wired connections throughout medium-sized homes. Let the whole family enjoy fast Wi-Fi on every phone, tablet, and laptop.



Four Modes in One

Router Mode (Default)

Connect to the Ethernet to instantly create a private wireless network and share internet access to all your Wi-Fi devices



Access Point Mode

Transform your existing wired network to a wireless one



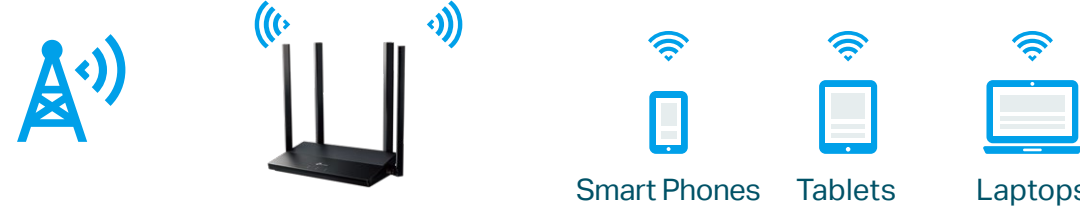
Range Extender Mode

Boost the existing wireless coverage in your room



WISP Mode

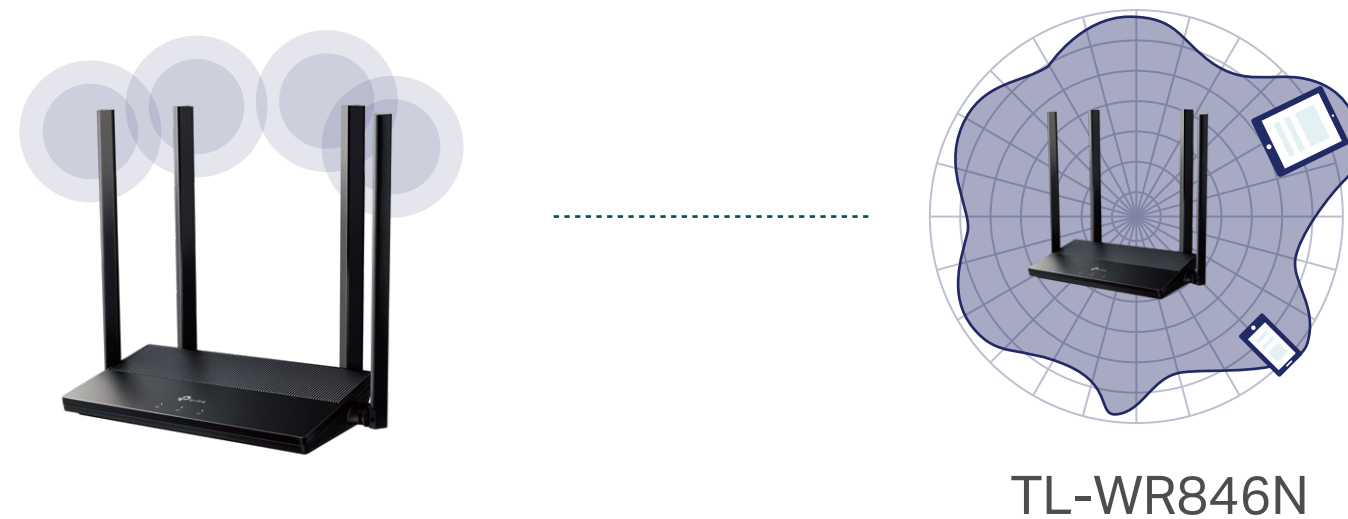
Connect to the ISP network wirelessly in areas without wired service



Highlights

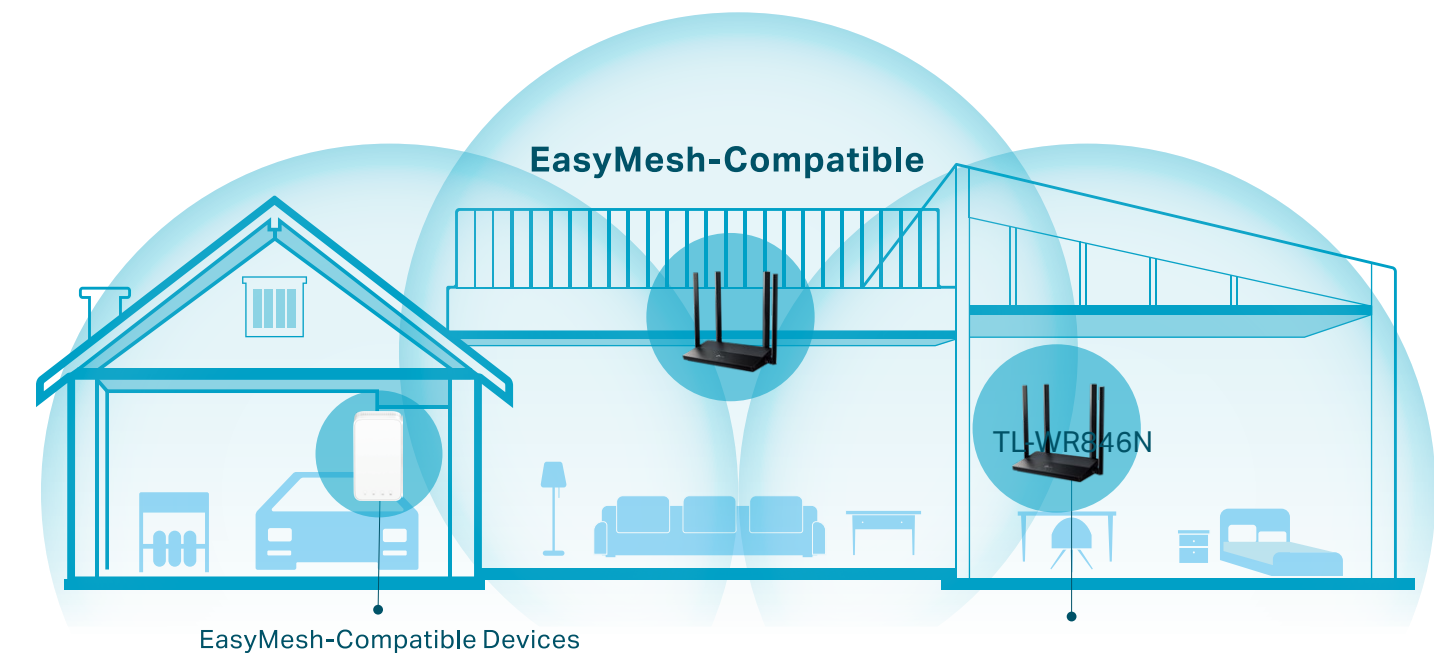
4 Antennas for Broader Coverage

Equipped with four 5 dBi omni directional antennas, TL-WR846N provides better Wi-Fi range and network performance for all to enjoy in your home.



Convenient Mesh Networking

Mesh networking creates smooth, fast, stable roaming. TL-WR846N can build an EasyMesh network with devices that use EasyMesh technology. Eliminate Wi-Fi dead zones, expand your network, and fill your entire home with high-speed Wi-Fi.

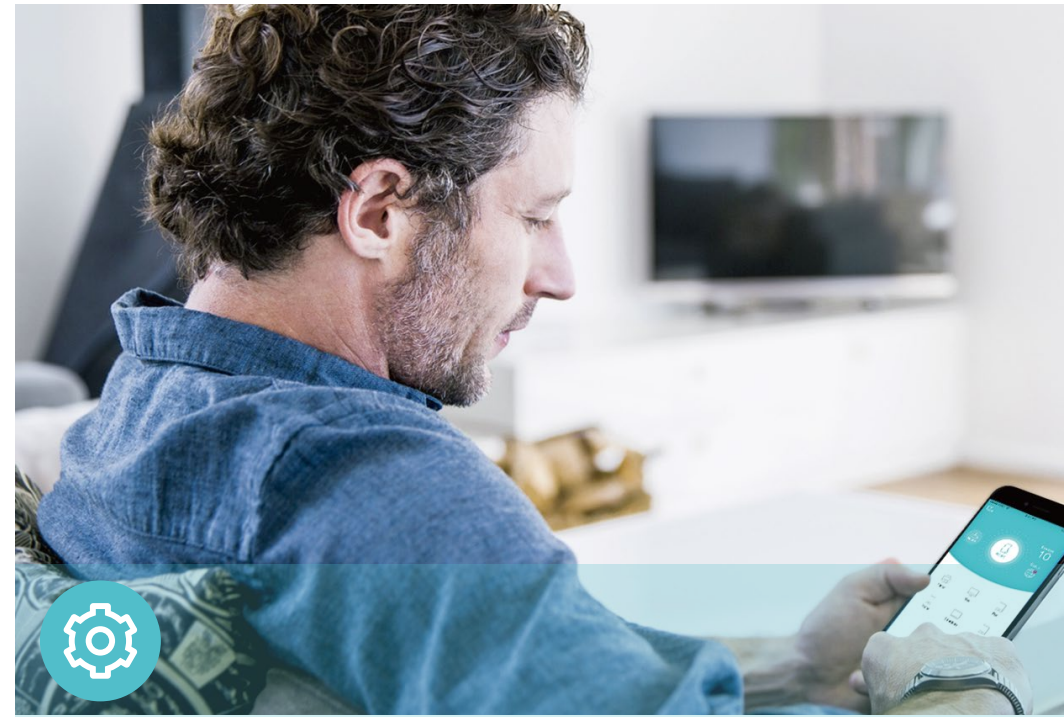


Features



Reliability

- 802.11n – Backward compatible with 802.11b/g products
- Quality of Service – Prioritizes devices to give faster performance where you need it
- IPTV – Support IGMP Proxy/Snooping, Bridge and Tag VLAN to optimize IPTV streaming



Ease of Use

- Intuitive Web UI– Ensures quick and simple installation without hassle
- Hassle-free Management with Tether App – Manage your network settings with your smartphone
- TP-Link ID - Binds the router to your TP-Link ID and other family member's accounts to manage the router
- Fast Encryption – Make secure wireless connection quickly and easily with the push of a WPS button



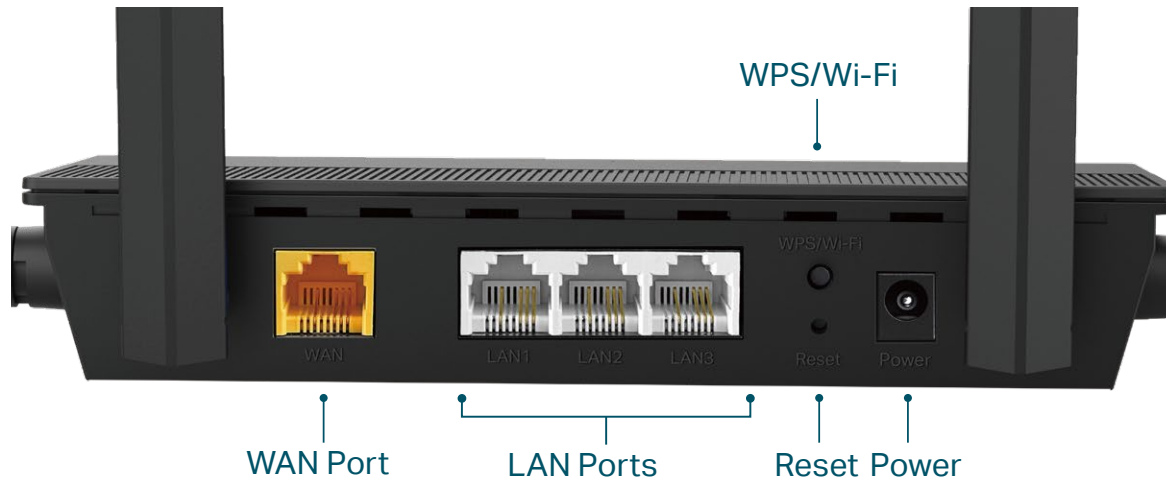
Security

- Advanced WPA3 Encryptions – The latest WiFi security protocol, WPA3, brings new capabilities to improve cybersecurity in personal networks‡
- Guest Network – Creates a separate network to secure the privacy of hosts
- Access Control – Establish a Allow List or Deny List to allow or block certain devices from accessing the internet
- Parental Controls – Allow parents to establish regulated access for children

Specifications

Hardware

- Ethernet Ports: 1 × 10/100 Mbps WAN Port, 3 × 10/100 Mbps LAN Ports
- Buttons: Wi-Fi/WPS Button, Reset Button
- Antennas: 4 Fixed Omni Directional Antennas
- External Power Supply: 9VDC / 0.6A
- Dimensions (W x D x H): 7.2 × 3.7 × 1.3 in (182.7 × 94 × 33.3 mm)



Wireless

- Wireless Standards: IEEE 802.11n, IEEE 802.11g, IEEE 802.11b
- Frequency: 2.412~2.472 GHz
- Signal Rate:
 - 11n: Up to 300 Mbps(dynamic)
 - 11g: Up to 54 Mbps(dynamic)
 - 11b: Up to 11 Mbps(dynamic)
- Reception Sensitivity:
 - 270M: -70dBm@10% PER
 - 130M: -74dBm@10% PER
 - 108M: -74dBm@10% PER
 - 54M: -77dBm@10% PER
 - 11M: -87dBm@8% PER
 - 6M: -90dBm@10% PER
 - 1M: -98dBm@8% PER
- Wireless Function: Enable/Disable Wireless Radio, WMM, Wireless Statistics
- Wireless Security: WEP, WPA / WPA2, WPA-PSK / WPA2-PSK

Specifications

Software

- Operation Modes: Wireless Router, Range Extender, Access Point, WISP
- WAN Type: Dynamic IP, Static IP, PPPoE(Dual Access), PPTP(Dual Access), L2TP(Dual Access)
- DHCP: DHCP Server, DHCP Client List, Address Reservation
- Quality of Service: Device Prioritization
- NAT Forwarding: Port Forwarding, Port Triggering, UPnP, DMZ
- Dynamic DNS: TP-Link, NO-IP, DynDNS
- Firewall Security: SPI Firewall, IP and MAC Address Binding
- Protocols: IPv4, IPv6
- Management: Local Management, Remote Management
- Access Control: Allow List, Deny List
- Parental Controls: URL Filtering, Time Controls
- Guest Network: 2.4 GHz Guest Network

Others

- Certification
FCC, CE, RoHS
- System Requirements
Internet Explorer, Firefox, Chrome, Safari, or other JavaScript-enabled browser

*You are recommended to use the latest version
Cable or DSL Modem (if needed)
Subscription with an internet service provider (for internet access)
- Environment
Operating Temperature: 0°C~40°C (32°F ~104°F)
Operating Humidity: 10%~90% non-condensing
- Package Contents
Wireless Router TL-WR846N
Power Adapter
RJ-45 Ethernet Cable
Quick Installation Guide



For more information, please visit
https://www.tp-link.com/products/details/?model=TL-WR846N_V1
or scan the QR code left

Specifications are subject to change without notice. TP-Link is a trademark of TP-Link Systems Inc. or its affiliates. Other brands and product names are trademarks or registered trademarks of their respective holders. ©2024 TP-Link Systems Inc. All rights reserved.

†Maximum wireless signal rates are the physical rates derived from IEEE Standard 802.11 specifications. Actual wireless data throughput and wireless coverage are not guaranteed and will vary as a result of network conditions, client limitations, and environmental factors, including building materials, obstacles, volume and density of traffic, and client location.

‡Use of WPA3 requires clients to also support WPA3.

△TP-Link EasyMesh-compatible products can network with other devices that use EasyMesh. Failed connections may be due to firmware conflicts of different vendors. The EasyMesh-Compatible function is still being developed on some models and will be supported in subsequent software updates.