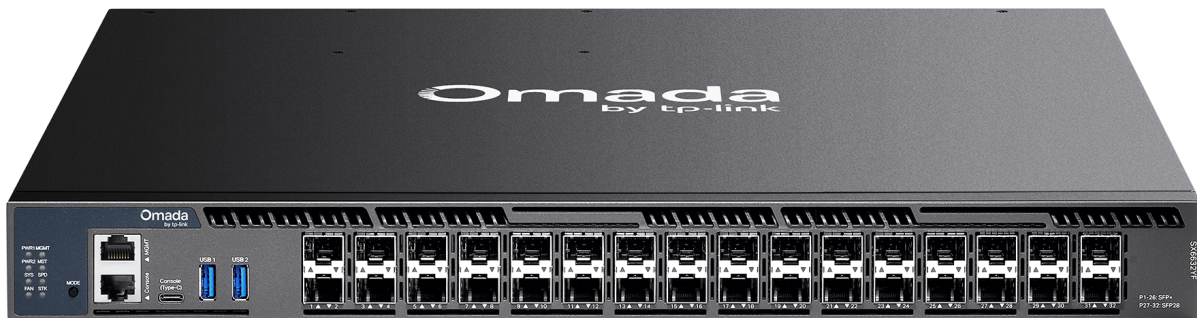


# Omada Switch | Datasheet

---

## SX6632YF

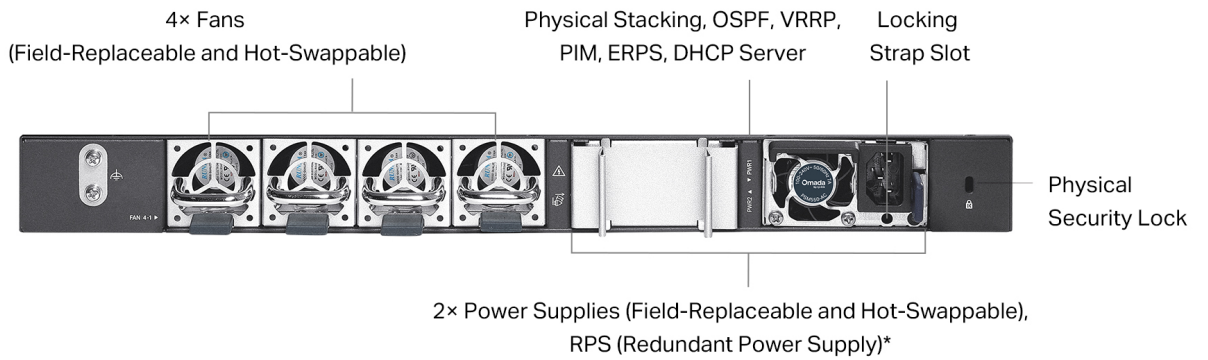
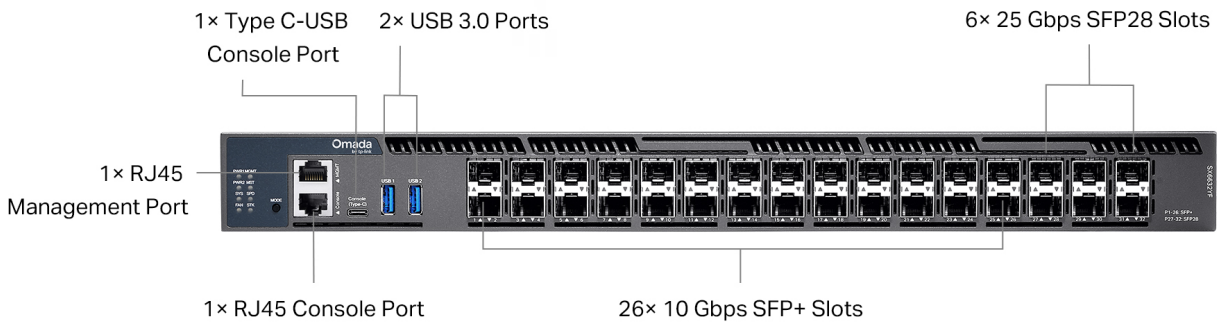
Omada Campus 26-Port 10G SFP+ Stackable L3 Managed Aggregation Switch with 6× 25G Slots



## Highlights

- 26× 10G SFP+ slots and 6× 25G SFP28 slots
- 820 Gbps switching capacity
- Physical Stacking up to 8 units for built-in redundancy and performance\*\*
- L3 features: RIP, OSPF, ECMP, VRRP, PIM-DM, PIM-SM, and DHCP Server/Relay
- Security Strategies: ACL, Port Security, DoS Defend, 802.1X
- Highly Available with two field-replaceable power supplies\*, VRRP, and ERPS
- Centralized cloud management via the Omada SDN controller
- Standalone management via web, CLI, SNMP, and RMON

# Product Pictures



\*Ships with one PSM550-AC module by default, and another field-replaceable redundant power supply requires a separate purchase.

\*\*Physical stacking up to 8 units at standalone mode and 4 units at controller mode

# Specifications

Hardware Features & Performance		
Model		SX6632YF
General	Interface	26 × 1/10Gbps SFP+ Slots* 6 × 1/10/25Gbps SFP28 Slots
	Console Ports	1 × RJ45 + 1 × USB Type-C
	Management Port	1 × RJ45
	USB Ports	2 × USB 3.0
	Flash	2 × 4MB Nor + 8GB EMMC
	DRAM	8GB DDR4
	Processor	Quad-Core ARM @1.2GHz CPU
Performance	Switching Capacity	820 Gbps
	Forwarding Bandwidth	410 Gbps
	MAC Address Table	Max 128K
	Hardware Routes Entries	Max 102400
	Packet Forwarding Rate	610.1 Mpps
	Packet Buffer	8 MB
	Stacking Port	25G SFP28 slot (All uplink ports can be used as stacking ports)**
	Max Stacking Number	8 in standalone mode, 4 in controller mode
	Stacking Bandwidth	Up to 300 Gbps (6 stacking ports)
	Compatible Model for Stacking	SX6632YF
	Transmission Method	Store and Forward
	Jumbo Frame	9 KB
Physical & Environment	Power Supply	100-240 V ~50/60 Hz
	Redundant Power Supply	Max 2 hot swappable power supply module, N+1 redundant (shipped with one PSM550-AC module by default)***
	Suitable Power Supply Module	PSM550-AC
	Max Power Consumption	86.7 W (110 V/60 Hz)
	Max Heat Dissipation	295.85 BTU/hr (110 V/60 Hz)
	Standby Power Consumption	31.4 W (220 V/50 Hz)
	Noise	1 × PSM550-AC power supply module: Min: 34.9 dBA @ 1m 25 °C Max: 61.7 dBA @ 1m 25 °C
	Fan Quantity	4 hot swappable fan trays (shipped by default), N+1 redundant
	Airflow	Front-to-back
	Surge Protection	Service port: ±6 kV in common mode Power port: ±4 kV in differential mode; ±4 kV in common mode
	ESD Protection	Air: ±15 kV, Contact: ±8 kV
	MTBF	724,732 h @ 25 °C
	Dimensions (W x D x H)	17.3 × 15.0 × 1.7 in (440 × 380 × 44 mm)
	Net Weight	6.54 kg (14.42 lbs)
	Installation	Rackmount
	Operating Temperature & Altitude	-5 °C to 50 °C (23 °F to 122 °F) @ 300 meters -5 °C to 45 °C (23 °F to 113 °F) @ 2,000 meters -5 °C to 40 °C (23 °F to 104 °F) @ 3,000 meters****
	Storage Temperature	-40 °C to 70 °C (-40 °F to 158 °F)
	Operation Humidity	10% to 90% RH, non-condensing
Storage Humidity	5% to 90% RH, non-condensing	
Certification	CE, FCC, RoHS	

\*No more than six 10G RJ45 SFP+ modules are supported. And it is recommended to have one column interval between every two 10G RJ45 SFP+ modules.

\*\*The 25G SFP28 slots support stacking only through 25G DAC/25G SFP28 modules rather than 10G DAC/10G SFP+ modules.

\*\*\*An additional power supply module needs to be purchased separately.

\*\*\*\*The supported altitude is sea level to 5000 m. It should be noted that when the altitude is above 2000 m, for every 220 meters of altitude increase, the maximum operating temperature will drop by 1°C (1.8°F).

# Software Features<sup>^</sup>

Model		SX6632YF	
System	System Info	<ul style="list-style-type: none"> <li>• Device Description                             <ul style="list-style-type: none"> <li>- Name</li> <li>- Location</li> <li>- System Contact</li> </ul> </li> <li>• System Time                             <ul style="list-style-type: none"> <li>- Manual</li> <li>- Synchronize with PC's Clock</li> <li>- SNTP Client</li> </ul> </li> <li>• DST                             <ul style="list-style-type: none"> <li>- Predefined Mode</li> <li>- Recurring Mode</li> <li>- Date Mode</li> </ul> </li> </ul>	<ul style="list-style-type: none"> <li>• LED                             <ul style="list-style-type: none"> <li>- LED on/off</li> </ul> </li> <li>• System IP                             <ul style="list-style-type: none"> <li>- Static IP/DHCP/BOOTP</li> </ul> </li> <li>• System IPv6                             <ul style="list-style-type: none"> <li>- Link-local Address Config</li> <li>- Global Address Autoconfig via RA Message</li> <li>- Global Address Autoconfig via DHCPv6 Server</li> <li>- Add a Global Address Manually</li> </ul> </li> </ul>
	User Management	<ul style="list-style-type: none"> <li>• User Settings</li> <li>• Access Level: 4 levels</li> </ul>	<ul style="list-style-type: none"> <li>• Password Recovery Settings</li> </ul>
	System Tools	<ul style="list-style-type: none"> <li>• Config Restore/Backup                             <ul style="list-style-type: none"> <li>- Web: HTTP</li> <li>- CLI: TFTP/Flash/USB</li> </ul> </li> <li>• Firmware Upgrade                             <ul style="list-style-type: none"> <li>- Web: HTTP</li> <li>- CLI: TFTP/Flash/USB</li> </ul> </li> </ul>	<ul style="list-style-type: none"> <li>• System Reboot</li> <li>• System Reset</li> <li>• Boot Config (Dual Image)</li> <li>• Reboot Schedule</li> </ul>
	Access Security	<ul style="list-style-type: none"> <li>• Access Control Config                             <ul style="list-style-type: none"> <li>- IP-based</li> <li>- MAC-based</li> <li>- Port-based</li> <li>- IPv6-based</li> </ul> </li> <li>• HTTP Config                             <ul style="list-style-type: none"> <li>- Enable/Disable</li> <li>- Session Config</li> <li>- Access User Number</li> <li>- Port Setting</li> </ul> </li> <li>• SSL Config                             <ul style="list-style-type: none"> <li>- SSLv3/TLSv1 Enable/Disable</li> <li>- CipherSuite Config</li> <li>- IPv6 SSL</li> </ul> </li> </ul>	<ul style="list-style-type: none"> <li>• SSH Config                             <ul style="list-style-type: none"> <li>- Enable/Disable</li> <li>- v2</li> <li>- Encryption Algorithm</li> <li>- Data Integrity Algorithm</li> <li>- Port Setting</li> <li>- IPv6 SSH</li> </ul> </li> <li>• Telnet Config                             <ul style="list-style-type: none"> <li>- Enable/Disable</li> <li>- Port Setting</li> <li>- IPv6 Telnet</li> </ul> </li> <li>• Console Port                             <ul style="list-style-type: none"> <li>- Baud Rate setting</li> </ul> </li> </ul>
	Stack	<ul style="list-style-type: none"> <li>• Stack Setting</li> <li>• Stack-port LAG: up to 6 groups, each group supports a maximum of all stackable-ports</li> <li>• Stackable Devices: up to 8 devices</li> </ul>	<ul style="list-style-type: none"> <li>• Stack MAC Address Switching Delay</li> <li>• Multi-active Detection (MAD)</li> <li>• Virtual MAC</li> </ul>
	SDM Template	<ul style="list-style-type: none"> <li>• Default Template                             <ul style="list-style-type: none"> <li>- IPv4 ACL Rules: 900 entries</li> <li>- MAC ACL Rules: 900 entries</li> <li>- Combined ACL Rules: 900 entries</li> <li>- IPv6 ACL Rules: 0 entries</li> <li>- IPv4 Source Guard: 899 entries</li> <li>- IPv6 Source Guard: 0 entries</li> </ul> </li> <li>• IPv4 Access                             <ul style="list-style-type: none"> <li>- IPv4 ACL Rules: 0 entries</li> <li>- MAC ACL Rules: 900 entries</li> <li>- Combined ACL Rules: 1500 entries</li> <li>- IPv6 ACL Rules: 0 entries</li> <li>- IPv4 Source Guard: 1024 entries</li> <li>- IPv6 Source Guard: 0 entries</li> </ul> </li> <li>• IPv6 Access                             <ul style="list-style-type: none"> <li>- IPv4 ACL Rules: 0 entries</li> <li>- MAC ACL Rules: 600 entries</li> <li>- Combined ACL Rules: 0 entries</li> <li>- IPv6 ACL Rules: 750 entries</li> <li>- IPv4 Source Guard: 0 entries</li> <li>- IPv6 Source Guard: 749 entries</li> </ul> </li> </ul>	<ul style="list-style-type: none"> <li>• Extacl Access                             <ul style="list-style-type: none"> <li>- IPv4 ACL Rules: 1500 entries</li> <li>- MAC ACL Rules: 1500 entries</li> <li>- Combined ACL Rules: 1500 entries</li> <li>- IPv6 ACL Rules: 500 entries</li> <li>- IPv4 Source Guard: 0 entries</li> <li>- IPv6 Source Guard: 0 entries</li> </ul> </li> <li>• Omada                             <ul style="list-style-type: none"> <li>- IPv4 ACL Rules: 0 entries</li> <li>- MAC ACL Rules: 0 entries</li> <li>- Combined ACL Rules: 1800 entries</li> <li>- IPv6 ACL Rules: 450 entries</li> <li>- IPv4 Source Guard: 0 entries</li> <li>- IPv6 Source Guard: 0 entries</li> </ul> </li> </ul>
	Time Range	<ul style="list-style-type: none"> <li>• Time Range Config</li> </ul>	<ul style="list-style-type: none"> <li>• Holiday Config</li> </ul>
	PTP	<ul style="list-style-type: none"> <li>• Profile: IEEE 1588v2 (PTPv2), IEEE 802.1AS</li> </ul>	<ul style="list-style-type: none"> <li>• Clock-type: oc, bc, e2etc, p2ptc</li> </ul>
	File System	<ul style="list-style-type: none"> <li>• File Operation</li> <li>• FTP</li> </ul>	<ul style="list-style-type: none"> <li>• TFTP</li> <li>• USB Storage</li> </ul>

## Software Features<sup>^</sup>

Model		SX6632YF	
L2 Features	Port	<ul style="list-style-type: none"> <li>• Auto Negotiation/Auto MDI/MDIX</li> <li>• Port config                             <ul style="list-style-type: none"> <li>- Status</li> <li>- Speed and Duplex</li> <li>- Flow Control (802.3x)</li> <li>- Jumbo Frame: 1518-9216 KB</li> </ul> </li> <li>• Port Mirror                             <ul style="list-style-type: none"> <li>- Ingress (Many to One)</li> <li>- Egress (Many to One)</li> <li>- RSPAN</li> </ul> </li> </ul>	<ul style="list-style-type: none"> <li>• Port Security                             <ul style="list-style-type: none"> <li>- Learn mode: Dynamic/Static/Permanent/Sticky</li> <li>- Port Max Learned MAC: 64</li> <li>- Current Learned Number</li> <li>- Status</li> <li>- Exceed Max Learned Trap</li> </ul> </li> <li>• Port Isolation</li> <li>• Loopback Detection                             <ul style="list-style-type: none"> <li>- Alert</li> <li>- Port Based</li> <li>- VLAN Based</li> </ul> </li> </ul>
	DDM		
	LAG	<ul style="list-style-type: none"> <li>• Hash Algorithm: SRC MAC/DST MAC/SRC MAC + DST MAC/SRC IP/DST IP/SRC IP + DST IP</li> </ul>	<ul style="list-style-type: none"> <li>• Static LAG: Up to 120 groups, up to 8 ports per group</li> <li>• LACP (802.3ad)</li> </ul>
	Traffic Monitor	<ul style="list-style-type: none"> <li>• TX Packets/Bytes</li> <li>• RX Packets/Bytes</li> <li>• TX Unicast/Multicast/Broadcast</li> <li>• RX Unicast/Multicast/Broadcast</li> </ul>	<ul style="list-style-type: none"> <li>• TX Jumbo</li> <li>• RX Jumbo</li> <li>• TX Errors</li> <li>• RX Errors</li> <li>• TX/RX Packet Size Analysis</li> </ul>
	MAC Address	<ul style="list-style-type: none"> <li>• MAC Address Table: Max 128K entries</li> <li>• IVL/SVL: IVL</li> <li>• Create Static Unicast Address</li> </ul>	<ul style="list-style-type: none"> <li>• Bind Dynamic Address</li> <li>• Create Filtering Address</li> <li>• MAC Notification Settings</li> </ul>
	VLAN	<ul style="list-style-type: none"> <li>• 802.1Q VLAN(802.1q): 4K VLANs</li> <li>• MAC VLAN: 200 entries</li> <li>• Protocol VLAN (IEEE 802.1v)                             <ul style="list-style-type: none"> <li>- 16 Protocol VLAN Templates</li> <li>- 12 Protocol VLAN Groups</li> </ul> </li> </ul>	<ul style="list-style-type: none"> <li>• QinQ (VLAN VPN): 256 entries</li> <li>• Private VLAN</li> <li>• GVRP</li> </ul>
	L2 Multicast	<ul style="list-style-type: none"> <li>• Max Multicast Groups: 4093 (IGMP Snooping &amp; MLD Snooping &amp; MVR)</li> <li>• IGMP Snooping                             <ul style="list-style-type: none"> <li>- IGMP V1/V2/V3</li> <li>- Report Message Suppression</li> <li>- Fast Leave</li> <li>- Unknown Multicast Discard</li> <li>- Static Multicast Groups</li> <li>- IGMP Snooping Querier</li> <li>- IGMP Packet Statistics</li> <li>- IGMP Authentication</li> <li>- Multicast Filtering: 256 profiles and 16 entries per profile</li> <li>- Router Port Setting: Static Router Port/Forbidden Router Port</li> </ul> </li> </ul>	<ul style="list-style-type: none"> <li>• MLD Snooping                             <ul style="list-style-type: none"> <li>- MLD V1/V2</li> <li>- Report Message Suppression</li> <li>- Unknown Multicast Discard</li> <li>- Fast Leave</li> <li>- Static Multicast Groups</li> <li>- MLD Snooping Querier</li> <li>- MLD Packet Statistics</li> <li>- Multicast Filtering: 256 profiles and 16 entries per profile</li> <li>- Router Port Setting: Static Router Port/Forbidden Router Port</li> </ul> </li> <li>• MVR</li> </ul>
	STP	<ul style="list-style-type: none"> <li>• STP(802.1d)</li> <li>• RSTP(802.1w)</li> <li>• MSTP(802.1s)</li> </ul>	<ul style="list-style-type: none"> <li>• STP Security                             <ul style="list-style-type: none"> <li>- Loop Protect</li> <li>- Root Protect</li> <li>- TC Protect</li> <li>- BPDU Protect</li> <li>- BPDU Filter</li> </ul> </li> </ul>
	LLDP (802.1ab)	<ul style="list-style-type: none"> <li>• Local Info</li> <li>• Neighbor Info</li> </ul>	<ul style="list-style-type: none"> <li>• Statistic Info</li> <li>• LLDP-MED</li> </ul>
	L2PT		
	PPPoE ID Insertion	<ul style="list-style-type: none"> <li>• Circuit-ID Type</li> </ul>	<ul style="list-style-type: none"> <li>• Remote-ID</li> </ul>
	ERPS	<ul style="list-style-type: none"> <li>• Ring: 64</li> </ul>	
	Virtual MAC		
	Sticky MAC		

## Software Features<sup>^</sup>

Model		SX6632YF	
L3 Features	IPv4 Interfaces: 4094 IPv6 Interfaces: 4094		
	IPv4 Static Routes: 2048 (shared with IPv6 Static Routes) IPv6 Static Routes: 1024 (shared with IPv4 Static Routes)		
	IPv4 Host Routes: 15300 (shared with IPv4 Host Routes) IPv6 Host Routes: 15300 (shared with IPv6 Host Routes)		
	IPv4 Network Routes: Max 102400 (shared with IPv6 Network Routes) IPv6 Network Routes: Max 51200 (shared with IPv4 Network Routes)		
	ECMP	<ul style="list-style-type: none"> <li>• Max ECMP Routes: 256</li> <li>• Max ECMP Nexthops per Destination: 32</li> </ul>	
	ARP	• Static ARP: 1024	• Dynamic ARP: 24576
	ND: 24576		
	DHCP	<ul style="list-style-type: none"> <li>• DHCP Server                             <ul style="list-style-type: none"> <li>- IP Pools: 64</li> <li>- Max Leases: 8000</li> <li>- Manual Binding Entries: 1000</li> <li>- Exclude IP range Entries: 100</li> </ul> </li> </ul>	<ul style="list-style-type: none"> <li>• DHCP Relay</li> <li>• DHCP L2 Relay</li> <li>• DHCPv6 Relay</li> <li>• DHCPv6 L2 Relay</li> </ul>
	VRRP	<ul style="list-style-type: none"> <li>• VRRP V2/V3</li> <li>• VRRP Instance: 64</li> <li>• VRRP Virtual IP: 32 per instance</li> </ul>	
	OSPF	<ul style="list-style-type: none"> <li>• OSPFv2                             <ul style="list-style-type: none"> <li>- OSPF Process: 16</li> </ul> </li> </ul>	<ul style="list-style-type: none"> <li>• OSPFv3                             <ul style="list-style-type: none"> <li>- OSPFv3 Instance: 1</li> </ul> </li> </ul>
	RIP	• RIPv1/v2	• RIPng
	VRF	• VRF Instance: 1024	
	PIM	<ul style="list-style-type: none"> <li>• PIM-DM (IPv4)</li> <li>• PIM-SM (IPv4)</li> <li>• PIM-SSM (IPv4)</li> </ul>	• IPv4 Multicast Route entries: 1024
	PBR		
QoS	Class of Service	<ul style="list-style-type: none"> <li>• Priority Queues: 8 Queues</li> <li>• Port Priority</li> <li>• 802.1P Priority</li> <li>• DSCP/ToS Priority</li> </ul>	<ul style="list-style-type: none"> <li>• Priority Schedule Mode: SP/WRR per Queue</li> <li>• Queue Weight Config: For WRR/SP+WRR Mode</li> </ul>
	Bandwidth Control	<ul style="list-style-type: none"> <li>• Rate Limit                             <ul style="list-style-type: none"> <li>- Ingress Rate Limit</li> <li>- Egress Rate Limit</li> <li>- Rate Limit Grade: 64kbps</li> </ul> </li> </ul>	<ul style="list-style-type: none"> <li>• Storm Control                             <ul style="list-style-type: none"> <li>- Control Mode: kbps/ratio</li> <li>- Broadcast</li> <li>- Multicast</li> <li>- Unknown Unicast</li> </ul> </li> </ul>
	Voice VLAN	• OUI entries: 64	

# Software Features<sup>^</sup>

Model	SX6632YF		
Network Security	IP-MAC Binding	<ul style="list-style-type: none"> <li>• Binding entries: 1024 entries</li> <li>• Manual Binding</li> </ul>	<ul style="list-style-type: none"> <li>• ARP Scanning</li> <li>• DHCP Snooping</li> </ul>
	IPv6-MAC Binding	<ul style="list-style-type: none"> <li>• Binding entries: 1024 entries</li> <li>• Manual Binding</li> </ul>	<ul style="list-style-type: none"> <li>• DHCPv6 Snooping</li> <li>• ND Snooping</li> </ul>
	ARP Inspection	<ul style="list-style-type: none"> <li>• ARP Detect entries: 1024 entries</li> <li>• Dynamic ARP Inspection (DAI)</li> </ul>	<ul style="list-style-type: none"> <li>• ARP Defend</li> <li>• ARP Statistics</li> </ul>
	ND Detection	<ul style="list-style-type: none"> <li>• ND Detection entries: 1024 entries</li> <li>• ND Detect</li> </ul>	<ul style="list-style-type: none"> <li>• ND Statistics</li> </ul>
	IP Source Guard	<ul style="list-style-type: none"> <li>• IP Source Guard entries</li> <li>- Default SDM Template: 899</li> <li>- IPv4 SDM Template: 1024</li> <li>- IPv6 SDM Template: 0</li> <li>- Extacl SDM Template: 0</li> </ul>	<ul style="list-style-type: none"> <li>• Security Type</li> <li>- Source IP</li> <li>- Source IP + Source MAC</li> </ul>
	IPv6 Source Guard	<ul style="list-style-type: none"> <li>• IPv6 Source Guard entries</li> <li>- Default SDM Template: 0</li> <li>- IPv4 SDM Template: 0</li> <li>- IPv6 SDM Template: 749</li> <li>- Extacl SDM Template: 0</li> </ul>	<ul style="list-style-type: none"> <li>• Security Type</li> <li>- Source IPv6</li> <li>- Source IPv6 + Source MAC</li> </ul>
	RA Guard: 30 entries		
	DoS Defend	<ul style="list-style-type: none"> <li>• Scan SYNFIN</li> <li>• Xmascan</li> <li>• NULL Scan</li> </ul>	<ul style="list-style-type: none"> <li>• SYN sPort less 1024</li> <li>• Ping Flooding</li> <li>• SYN/SYN-ACK Flooding</li> </ul>
	DHCP Filter	<ul style="list-style-type: none"> <li>• DHCPv4 Filter</li> <li>- Legal Server entries: 200</li> </ul>	<ul style="list-style-type: none"> <li>• DHCPv6 Filter</li> <li>- Legal Server entries: 200</li> </ul>
	802.1x	<ul style="list-style-type: none"> <li>• Control Type</li> <li>- Port Based</li> <li>- MAC Based</li> <li>• Auth Method: PAP/EAP-MD5/EAP-TLS/EAP-TTLS/EAP-PEAP</li> </ul>	<ul style="list-style-type: none"> <li>• Radius Authentication</li> <li>• Radius Accounting</li> <li>• Guest VLAN</li> <li>• VLAN Assignment</li> <li>• MAB</li> </ul>
	AAA		
	ACL	<ul style="list-style-type: none"> <li>• Time-Range</li> <li>- Time Slice</li> <li>- Week Time-Range</li> <li>- Absolute Time-Range</li> <li>- Holiday</li> <li>• MAC ACL</li> <li>• IP ACL</li> <li>• Combined ACL</li> <li>• IPv6 ACL</li> <li>• Rule Operation</li> <li>- Permit</li> <li>- Deny</li> <li>• Policy Action</li> <li>- Mirror</li> <li>- Rate Limit</li> <li>- Redirect</li> <li>- QoS Remark</li> <li>• Binding</li> <li>- Port Binding</li> <li>- VLAN Binding</li> </ul>	<ul style="list-style-type: none"> <li>• Default Template</li> <li>- IPv4 ACL Rules: 900 entries</li> <li>- IPv6 ACL Rules: 0 entries</li> <li>- MAC ACL Rules: 900 entries</li> <li>- Combined ACL Rules: 900 entries</li> <li>- IPv4 Source Guard: 899 entries</li> <li>• IPv4 Access</li> <li>- IPv4 ACL Rules: 0 entries</li> <li>- IPv6 ACL Rules: 0 entries</li> <li>- MAC ACL Rules: 900 entries</li> <li>- Combined ACL Rules: 1500 entries</li> <li>- IPv4 Source Guard: 1024 entries</li> <li>• IPv6 Access</li> <li>- IPv4 ACL Rules: 0 entries</li> <li>- IPv6 ACL Rules: 750 entries</li> <li>- MAC ACL Rules: 600 entries</li> <li>- Combined ACL Rules: 0 entries</li> <li>- IPv6 Source Guard: 749 entries</li> <li>• Extacl</li> <li>- IPv4 ACL Rules: 1500 entries</li> <li>- IPv6 ACL Rules: 500 entries</li> <li>- MAC ACL Rules: 1500 entries</li> <li>- Combined ACL Rules: 1500 entries</li> <li>• Omada</li> <li>- IPv4 ACL Rules: 0 entries</li> <li>- IPv6 ACL Rules: 450 entries</li> <li>- MAC ACL Rules: 0 entries</li> <li>- Combined ACL Rules: 1800 entries</li> </ul>

## Software Features<sup>^</sup>

Model	SX6632YF		
Maintenance	System Monitor	<ul style="list-style-type: none"> <li>• CPU Monitor</li> <li>• Memory Monitor</li> </ul>	
	sFlow		
	OAM	<ul style="list-style-type: none"> <li>• EFM                             <ul style="list-style-type: none"> <li>- Link Monitoring</li> <li>- Remote Failure Indication Config</li> <li>- Statistics</li> </ul> </li> </ul>	
	DLDP		
	SNMP	<ul style="list-style-type: none"> <li>• SNMP Version: v1/v2c/v3</li> <li>• SNMP Config                             <ul style="list-style-type: none"> <li>- Global Config</li> <li>- SNMP View</li> <li>- SNMP Group</li> <li>- SNMP User</li> <li>- SNMP Community</li> </ul> </li> </ul>	<ul style="list-style-type: none"> <li>• Notification                             <ul style="list-style-type: none"> <li>- Trap: IPv4/IPv6</li> <li>- Inform: IPv4/IPv6</li> </ul> </li> <li>• RMON v1</li> <li>• Public MIBs</li> <li>• Private MIBs</li> </ul>
	DHCP Auto Install		
	Log	<ul style="list-style-type: none"> <li>• Display/Filtering</li> <li>• Severity Level</li> <li>• Save to Flash</li> </ul>	<ul style="list-style-type: none"> <li>• Remote Host</li> <li>• Backup Log</li> </ul>
	Network Diagnostics	<ul style="list-style-type: none"> <li>• Ping</li> <li>• IPv6 Ping</li> </ul>	<ul style="list-style-type: none"> <li>• Tracert</li> <li>• IPv6 Tracert</li> </ul>
Others	Index		
	Show running config	<ul style="list-style-type: none"> <li>• Use the show running config command to view device's running status via telnet.</li> <li>• Configuration File: Import/Export/Edit</li> </ul>	
Omada SDN Controller	Yes		



# Ordering Information

## Host Switch

Model	Description
SX6632YF	Omada Campus 26-Port 10G SFP+ Stackable L3 Managed Aggregation Switch with 6× 25G Slots

## Power Supply Module

Model	Description
PSM550-AC	Omada 550 W AC Power Supply Module

## SFP/SFP+/SFP28 Module

Model	Description
SM311LS	Gigabit SFP module, Single-mode, LC interface, Up to 20km distance
SM311LM	Gigabit SFP module, Multi-mode, LC interface, Up to 550m distance
SM321A	Gigabit WDM Bi-Directional SFP Module, single-mode, LC connector, TX: 1550 nm/RX: 1310 nm, 20 km
SM321A-2	Gigabit WDM Bi-Directional SFP Module, single-mode, LC connector, TX: 1550 nm/RX: 1310 nm, 2 km
SM321B	Gigabit WDM Bi-Directional SFP Module, single-mode, LC connector, TX: 1310 nm/RX: 1550 nm, 20 km
SM321B-2	Gigabit WDM Bi-Directional SFP Module, single-mode, LC connector, TX: 1310 nm/RX: 1550 nm, 2 km
SM5110-LR	10GBase-LR SFP+ LC Transceiver, single-mode, LC connector, 1310nm, 10 km
SM5110-SR	10GBase-SR SFP+ LC Transceiver, multi-mode, LC connector, 850nm, 300 m
SM5110LSA-10	10GBase-BX WDM Bi-Directional SFP+ Module, single-mode, LC connector, TX: 1330 nm/RX: 1270 nm, 10 km
SM5110LSB-10	10GBase-BX WDM Bi-Directional SFP+ Module, single-mode, LC connector, TX: 1270 nm/RX: 1330 nm, 10 km
SM6110-LR	25GBase-LR SFP28 LC Transceiver, SMF (Single-mode fiber), LC connector, 1310 nm, 10 km
SM6110-SR	25GBase-SR SFP28 LC Transceiver, MMF (Multimode fiber), LC connector, 850 nm, 100 m

## RJ45 SFP/SFP+ Module

Model	Description
SM331T	1000BASE-T RJ45 SFP Module
SM5310-T	10GBASE-T RJ45 SFP+ Module

## MC Series Media Converter

Model	Description
MC210CS	Gigabit Single-Mode Media Converter, up to 20 km, chassis mountable
MC210CM	Gigabit multi-mode SC SFP Transceiver, up to 550 m, chassis mountable
MC200L	Gigabit SFP slot supporting mini-GBIC modules, chassis mountable
MC1400	14-slot power supply chassis for TP-LINK MC Series Media Converter, 19-inch rack-mountable

## Direct Attach Cable

Model	Description
SM6220-1M	1 Meter 25G SFP28 Direct Attach Cable
SM5220-1M	1 Meter 10G SFP+ Direct Attach Cable
SM5220-3M	3 Meters 10G SFP+ Direct Attach Cable

Some features are available only after upgrading to the latest software version.

Specifications are subject to change without notice. All the brands and product names are trademarks or registered trademarks of their respective holders. © 2025 TP-Link