

Omada VPN Gateway | Datasheet

DR3150

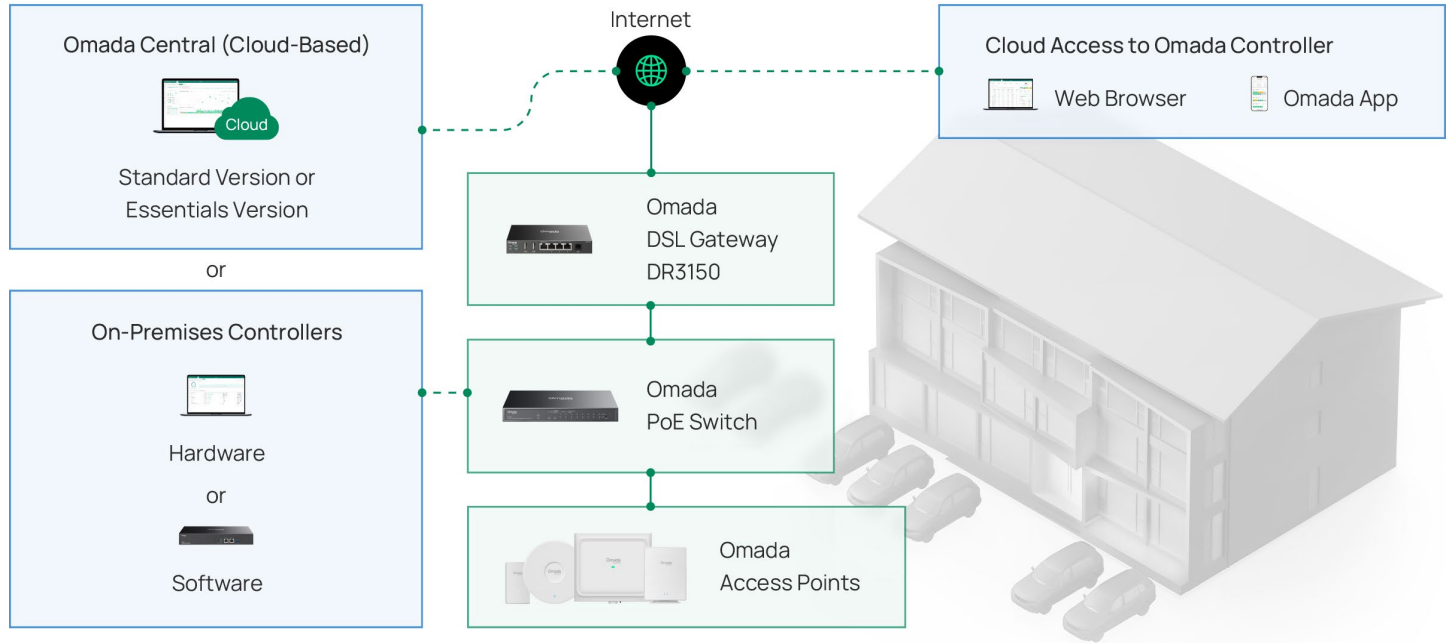
Omada Gigabit Desktop DSL Gateway



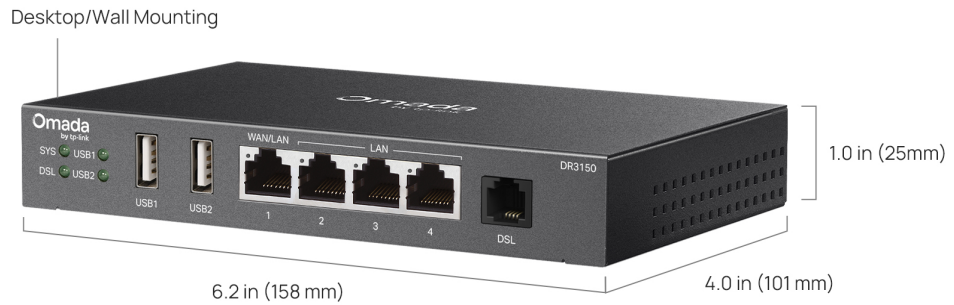
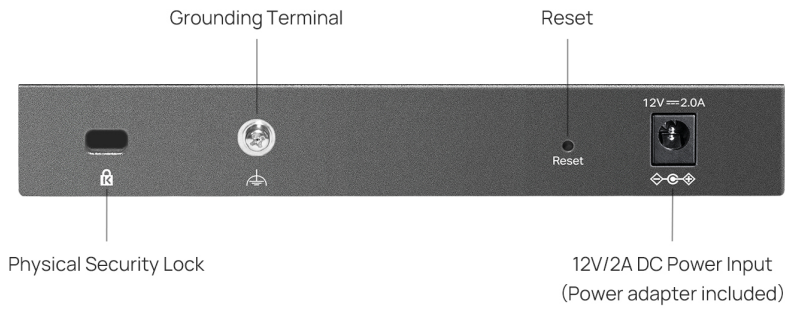
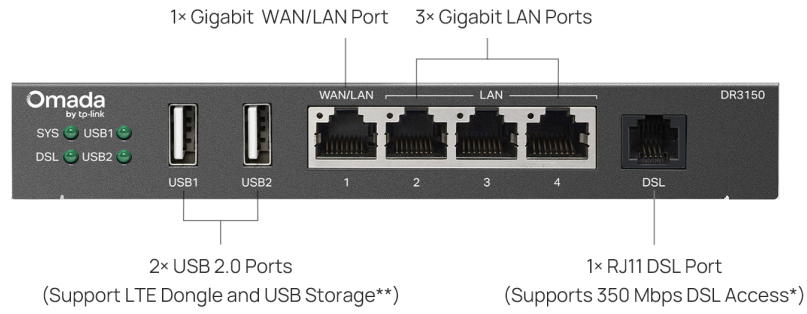
Highlights

- VDSL2 35b: Supports 350 Mbps DSL Access*
- VDSL2/ADSL2+/ADSL2/ADSL Compatibility
- 1× RJ11 Port & 4× Gigabit RJ45 Ports (1× WAN/LAN, 3× LAN)
- 2× USB 2.0 Ports (Supports USB LTE dongle and USB Storage)
- Load Balancing on up to 2 WAN Ports
- IPSec/PPTP/L2TP/OpenVPN/WireGuard/GRE VPN
- Centralized Cloud Management

Omada Solution



Product Pictures



*Maximum wired signal rates are the physical rates. Actual data throughput is not guaranteed and will vary as a result of network conditions, client limitations, and environmental factors.

**Supports two USB storage devices simultaneously. For LTE backup, only one LTE dongle can be used at a time.

Specifications

Model		DR3150
Hardware	Standards and Protocols	IEEE 802.3, IEEE 802.3i, IEEE 802.3u, IEEE 802.3ab, IEEE 802.3x, IEEE 802.1q, TCP/IP, DHCP, ICMP, NAT, PPPoE, NTP, HTTP, HTTPS, DNS, IPSec, PPTP, L2TP, OpenVPN, SNMP, LLDP
	Interface	1 Gigabit WAN/LAN port 3 Gigabit LAN ports 1 DSL port
	USB	2 USB2.0 (Supports USB LTE dongle and USB Storage ¹)
	DSL Standards	VDSL2: ITU G.993.2, ITU-T G.997.1 VDSL2 Profile, 8a, 8b, 8c, 8d, 12a, 12b, 17a, 35b ADSL2+: ITU-T G.992.5 ADSL2: ITU-T G.992.3 ADSL: ITU-T G.992.1(G.dmt), ITU-T G.992.2 (G.lite)
	DSL Speed	Up to 350 Mbps
	Compatibility	VDSL2/ADSL2+/ADSL2/ADSL
	Network Media	10BASE-T: UTP category 3, 4, 5 cable (Max 100 m) EIA/TIA-568 100Ω STP (Max 100 m) 100BASE-TX: UTP category 5, 5e cable (Max 100 m) EIA/TIA-568 100Ω STP (Max 100 m) 1000BASE-T: UTP category 5e, 6 cable (Max 100 m)
	Button	Reset Button
	Power Supply	External 12 V/2 A DC Adapter
	Flash	128 MB NAND
	DRAM	256 MB DDR
	LED	SYS, DSL, WAN (Link/Act), LAN (Link/Act), USB1, USB2
	Max Power Consumption	Power adapter not included: 13.44 W Power adapter included: 15.12 W
	Mounting	Desktop/Wall
	Dimensions (W x D x H)	6.2 × 4.0 × 1.0 in (158 × 101 × 25 mm)
	Net Weight	0.455 Kg
MTBF	991,396 h@25°C 598,718 h@40°C	
SDN Support	Hardware Controller	Automatic Device Discovery Intelligent Network Monitoring Abnormal Event Warnings
	Software Controller	Unified Configuration Reboot Schedule Captive Portal Configuration ZTP (Zero-Touch Provisioning) ²

1. Supports two USB storage devices simultaneously. For LTE backup, only one LTE dongle can be used at a time. For compatibility list, visit <https://www.omadanetworks.com/omada-router/compatibility/>.
2. Zero-Touch Provisioning is supported only when using Omada Cloud-Based Controller.

Model		DR3150
Performance ¹	Concurrent Session	50,000
	New Sessions /Second	2,500
	DPI Throughput	TCP: 995 Mbps; UDP: 762 Mbps
	Static IP NAT Throughput	Upload: 945 Mbps; Download: 945 Mbps Bi-Directional: 1802 Mbps
	DHCP NAT Throughput	Upload: 945 Mbps; Download: 945 Mbps Bi-Directional: 1814 Mbps
	PPPoE NAT Throughput	Upload: 940 Mbps; Download: 940 Mbps Bi-Directional: 1761 Mbps
	L2TP NAT Throughput	Upload: 655 Mbps; Download: 417 Mbps Bi-Directional: 458 Mbps
	PPTP NAT Throughput	Upload: 703 Mbps; Download: 496 Mbps Bi-Directional: 652 Mbps
	66 Byte Packet forwarding rate	Upload: 727,679 pps; Download: 598,214 pps
	1518 Byte Packet forwarding rate	Upload: 76,147 pps; Download: 76,555 pps
	IPSec VPN Throughput	ESP-SHA1-AES256: 230 Mbps ESP-SHA256-AES256: 233 Mbps ESP-SHA384-AES256: 54 Mbps ESP-SHA512-AES256: 34 Mbps
	WireGuard VPN	66 Mbps
	OpenVPN	15 Mbps
	GRE	Unencrypted: 623 Mbps; Encrypted: 205 Mbps
	L2TP VPN Throughput	Unencrypted: 433 Mbps; Encrypted: 175 Mbps
PPTP VPN Throughput	Unencrypted: 511 Mbps; Encrypted: 44 Mbps	
Basic Functions	WAN Connection Type	Static IP Dynamic IP PPPoE (supports MRU Configuration) PPTP L2TP
	DHCP	DHCP Server DHCPv6 PD Server (only in Standalone Mode) DHCP Options Customization DHCP Address Reservation Multi-IP Interfaces Multi-Net DHCP WAN DHCP Option 60
	MAC Clone	Modify WAN/LAN MAC Address ²
	IPTV	IGMP v2/v3 Proxy, Custom Mode, Bridge Mode
	IPv6	StaticIP / SLAAC / DHCPv6 / PPPoE / 6to4Tunnel / PassThrough / Non-Address mode
	stateful ACL	√
	mDNS Repeater	√
	Quality of Service	√
	Bridge VLAN	√
	VLAN	802.1Q VLAN
LAN DNS	√	

1. Rated specifications are based on test results using the specific software. Device performance may vary as a result of the actual scenario.
2. LAN MAC Address can be modified only in Standalone Mode.

Model		DR3150
Transmission	Load Balance	Intelligent Load Balance Application Optimized Routing Link Backup (Timing, Failover) Online Detection
	NAT	One-to-One NAT Multi-Net NAT Port Forwarding Port Triggering ¹ NAT-DMZ FTP/H.323/SIP/IPSec/PPTP ALG UPnP Disable NAT
	Routing	Static Routing Policy Routing RIP ¹ OSPF ¹
	Session Limit	IP-based Session Limit
	Bandwidth Control	IP-based Bandwidth Control
VPN	IPSec VPN	20 IPSec VPN Tunnels LAN-to-LAN, Client-to-LAN Main, Aggressive Negotiation Mode DES, 3DES, AES128, AES192, AES256 Encryption Algorithm IPsec Failover IKE v1/v2 MD5, SHA1, SHA2-384 and SHA2-512 Authentication Algorithm NAT Traversal (NAT-T) Dead Peer Detection (DPD) Perfect Forward Secrecy (PFS)
	PPTP VPN	PPTP VPN Server PPTP VPN Client (10) ² 16 Tunnels PPTP with MPPE Encryption
	L2TP VPN	L2TP VPN Server L2TP VPN Client (10) ² 16 Tunnels L2TP over IPSec
	GRE	√ (Only in Standalone Mode)
	SD-WAN	√ (Only in Contoller Mode)
	WireGuard VPN	√
	OpenVPN	OpenVPN Server OpenVPN Client (10) ² 50 OpenVPN Tunnels "Certificate + Account" Mode Full Mode

1. Port Triggering, RIP, and OSPF are supported only in Standalone Mode.
2. DR3150 can work as a VPN client and can connect with up to 10 VPN servers.

Model		DR3150
Security	Attack Defense	TCP/UDP/ICMP Flood Defense Block TCP Scan (Stealth FIN/Xmas/Null) Block Ping from WAN
	Filtering	Web Group Filtering ¹ URL Filtering Web Security ¹
	DNS Proxy	DNSSEC, DoH, DoT, DNS Override
	ARP Inspection	Sending GARP Packets ¹ ARP Scanning ¹ IP-MAC Binding ARP Detection
	Access Control	Source/Destination IP Based ACL Stateful ACL IPv4/IPv6 ACL National Based ACL FQDN
	DPI	Deep Packet Inspection Support 2466 type Applications
Authentication	Web Authentication	No Authentication Simple Password Hotspot (Local User / Voucher ² / SMS ² / Radius ²) External Radius Sever External Portal Sever ² LDAP ³
Management	Service	Dynamic DNS (Dyndns, No-IP, Peanuthull, Comexe, DDNS Customization)
	Maintenance	Web Management Interface Remote Management Export & Import Configuration SNMP v1/v2c/v3 Diagnostics (Ping & Traceroute) NTP Synchronize ⁴ Port Mirroring CLI (only in Standalone Mode) Syslog Support TR-069 (data models of TR-098 and TR-181 are supported)
Others	Certification	CE, FCC, RoHS
	Package Contents	DR3150, Power Adapter, Ethernet Cable, Phone Cable, External Splitter, Non-Slip Feet, Quick Installation Guide
	System Requirements	Microsoft Windows 98SE, NT, 2000, XP, Vista™ or Windows 7/8.1/10 MAC OS, NetWare, UNIX or Linux
	Environment	Operating Temperature: 0 °C to 40 °C (32 °F to 104 °F) Storage Temperature: -40 °C to 70 °C (-40 °F to 158 °F) Operating Humidity: 10% to 90% non-condensing Storage Humidity: 5% to 90% non-condensing

1. Web Group Filtering, Web Security, Sending GARP Packets, and ARP Scanning are supported only in Standalone Mode.
2. The following web authentication methods are supported only in Controller Mode: Voucher, SMS, Radius, and External Portal Sever.
3. LDAP is supported only in Standalone Mode.
4. NTP Synchronize is supported only in Standalone Mode.

*Maximum wired signal rates are the physical rates. Actual data throughput is not guaranteed and will vary as a result of network conditions, client limitations, and environmental factors.

*Some models featured in this guide may be unavailable in your country or region. Visit the website for local sales information: www.omadanetworks.com.

Specifications are subject to change without notice. All brands and product names are trademarks or registered trademarks of their respective holders. © 2026 TP-Link